

## UTP Cable Connectorization

UTP568B\_AN\_ENB01W

### How to Connectorize an UTP Cable in accordance with the 568-B Standard.

1

Remove the jacket using the LanPro LP-5501A tool as shown in **Figures 1** and **2**.



Figure 1

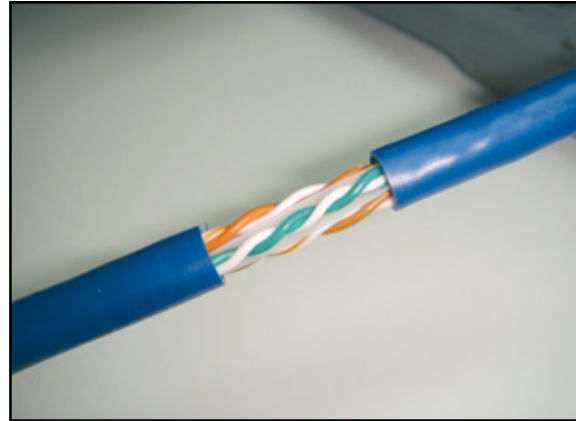
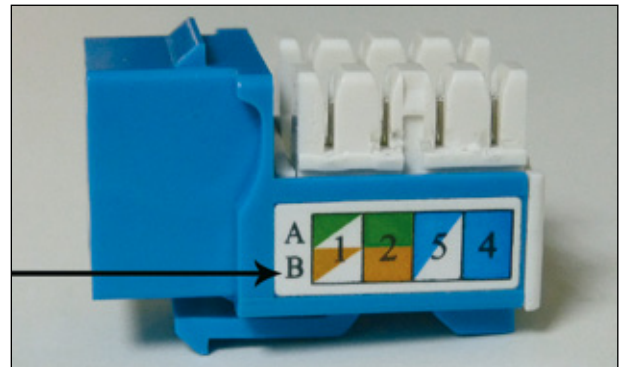


Figure 2

2

Select the standard to be used. In this case it will be the "568-B", as shown in **Figure 3**.

Figure 3



3

Proceed to place the cable in the jack as shown in **Figuras 4** and **5**.

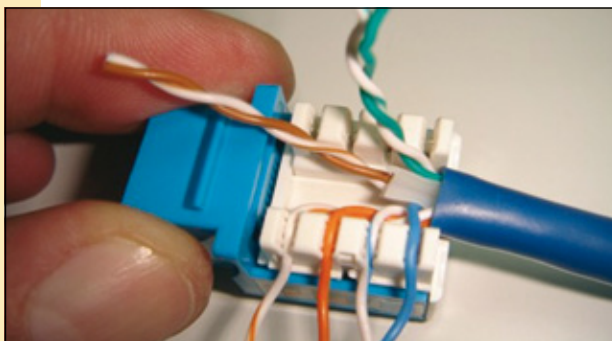


Figure 4

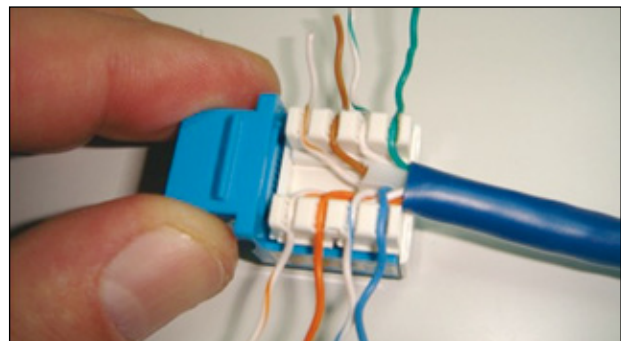
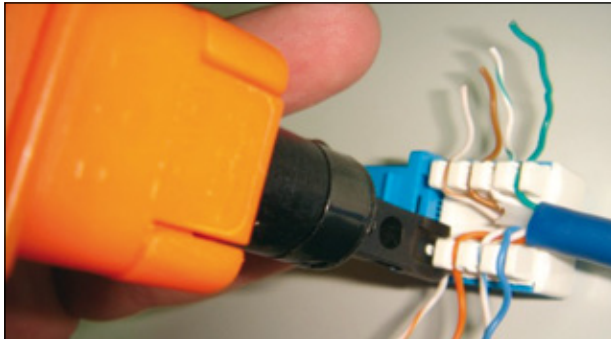


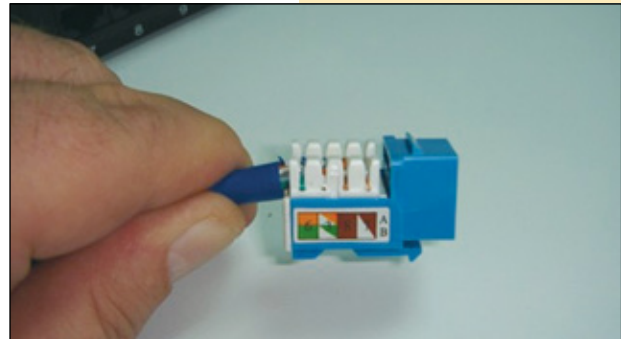
Figure 5

4

Use the LanPro LP-314BK punch down tool, as shown in **Figures 6** and **7**. Remember to be careful with the blade; this should cut the excess of cable as shown. Exert pressure so that it punches down the cable and at the same time it cuts its excess.



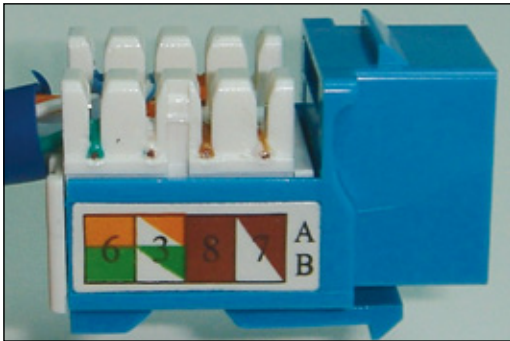
**Figure 6**



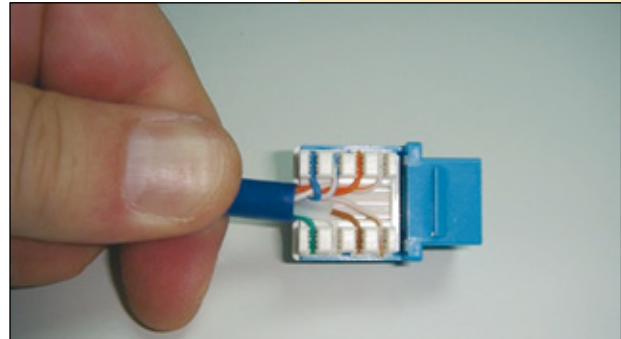
**Figure 7**

5

Verify that the cut is precise as shown in **Figures 8** and **9**.



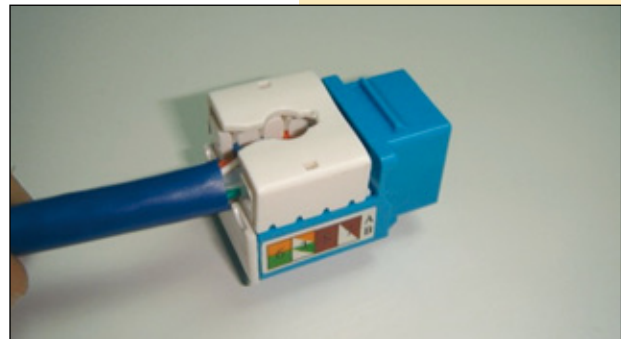
**Figure 8**



**Figure 9**

6

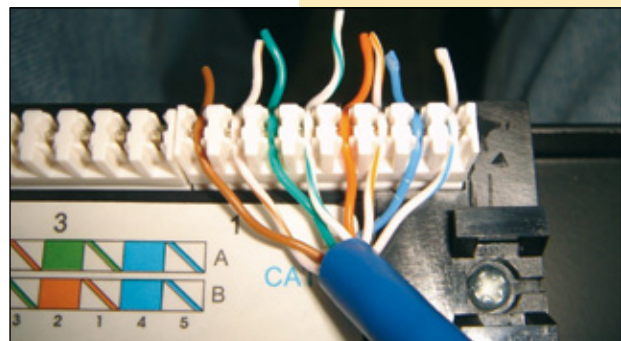
Place the plastic cover, as shown in **Figure 10**. You must repeat these steps for each; remember to set it to the faceplate and this one to the box.



**Figure 10**

7

Now proceed with the patch panel depending on the chosen standard, in this case 568-B, as shown in **Figure 11**.

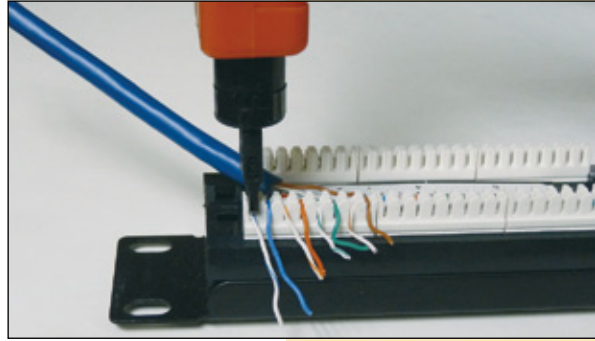


**Figure 11**

8

Use the LanPro LP-314BK punch down tool. Remember to be careful with the blade; this should cut the excess of cable as shown in **Figure 12**. For this, exert pressure so that it punches down the cable and at the same time it cuts its excess.

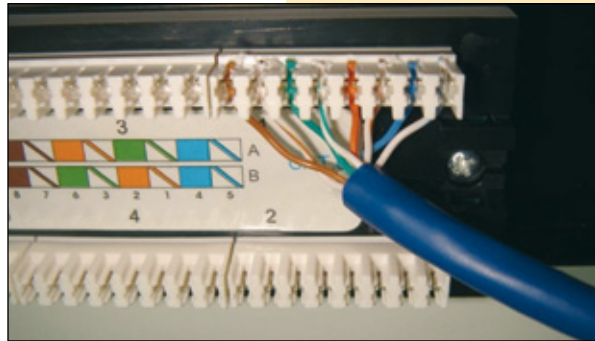
Figure 12



9

Verify that the cut is precise. See **Figure 13**.

Figure 13



10

Once you have finished the punching down in the patch panel, proceed to place the base intended to hold the cables and use the fixatives as shown in **Figure 14**.

Figure 14



11

Finally, proceed to verify the continuity of each point with the LP-LanTester - RJ45 Network Tester by LanPro as shown in **Figure 15**. In the event that no continuity exists, verify the connections as per the standard in each one of the sides and check the punch down of the cable.

Figure 15

