

**LP-TCRJ458P8CC6**  
**RJ45 8P8C CAT 6 U/UTP Industrial Plug for AWG23**  
**solid wire conductors or AWG26-22 stranded wire conductors**

LP-TCRJ458P8CC6\_SS\_ENB01W

### Features

- Small form factor
- Easy to assemble
- For CAT 6 AWG26-22
- MPTL Compliant
- Suitable for PoE

### Applications

- Access Point (AP's).
- PoE Illumination.
- IP Cameras and Sensors.
- Access Control.
- Other PoE and Non PoE systems.



**LP-TCRJ458P8CC6**  
**RJ45 8P8C CAT 6 U/UTP Industrial Plug for AWG23**  
**solid wire conductors or AWG26-22 stranded wire conductors**

LanPro's **LP-TCRJ458P8CC6** is a UTP RJ45 Field Connector, easy to assemble and due to its compact size, it's ideal for terminating CAT 6 cables directly in a wide range of network devices. The connector is compliant with the latest standard ANSI/TIA-568.2-D, which allows MPTL-installations (modular plug terminated link). It's suitable for PoE IEEE 802.3af, 802.3at, 802.3bt.

The 100-Ohm, 2 pcs. termination design takes the 4 pair (solid or stranded AWG 26-22) to the next level, achieving a stable connection and maintain the pair geometry inside the unit, avoiding excessive conductor untwist. The unit is cost effective, as can be reused over 12 times or more without worries. No more additional cost to re-terminate the run.

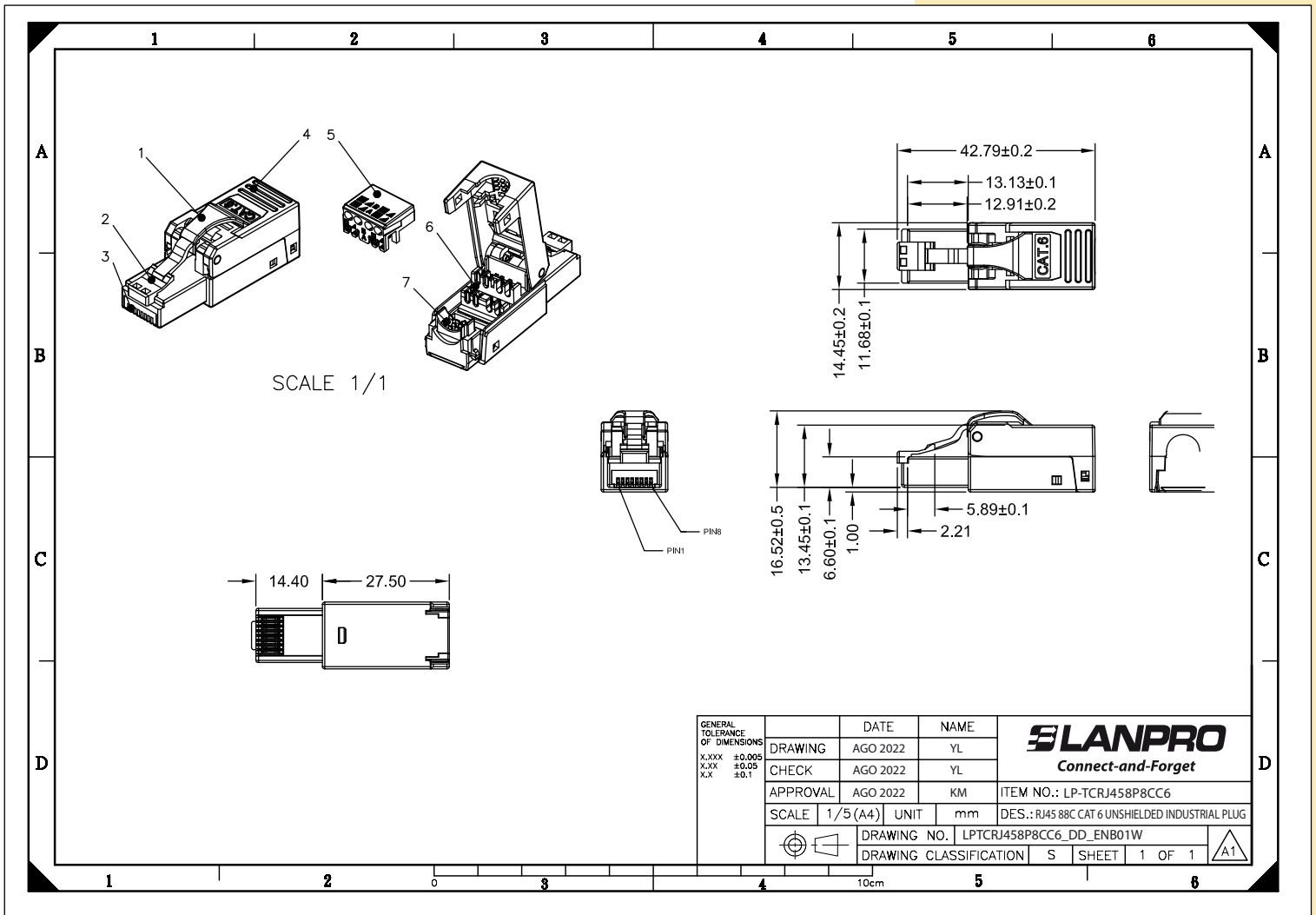
This model is designed for CAT 6 whole run (100m/305ft) and also can be used on CAT 6A short runs (up to 100ft) if necessary. Plug and unplug cycling is over 2000 mating times. This product is UL certify and can be used on any air space. Operating Temperature -20 to 75°C. This is IP20 rated. It is not a waterproof product.

The **LP-TCRJ458P8CC6** it's a toolless product. However, a dedicated tool its available if the installer has a high usage of this product.

**A Specifications**

<b>Material</b>	<b>Extractor</b>	PC UL 94-V2, Black color		
	<b>Housing</b>	PC UL 94-V2, Black color		
	<b>RJ45 plug</b>	Housing	PC UL 94-V2, Black color	
		Contact Material	Phosphor bronze with 1000 micro-inch nickel plated	
		Contact finish	Min. 50 micro-inch gold plated on surface contact area	
	<b>Cover</b>	PC UL 94-V2, Black color		
	<b>Wire management bar</b>	PC white color UL 94-V2		
	<b>IDC</b>	Housing	PC white color UL 94-V2	
		Terminal	Copper with tin plated	
	<b>Clamp</b>	PC UL 94-V2, Black color		
<b>PCB</b>	UL 94-V0			
<b>Performance</b>	<b>T568A &amp; T568B wiring</b>			
	<b>Insertion force</b>	20N max. (IEC 60603-7-4)		
	<b>Retention strength</b>	7.7kg between jack and plug		
	<b>Operating Temperature</b>	-10°C to 60°C (ISO/IEC 11801. ANSI/TIA 568 C.2)		
	<b>Life (mating cycles)</b>	750 cycles min (ISO/IEC 11801. IEC 60603-7-5)		
		IDC: Suitable for 23-26AWG stranded and solid wire, min. 20 installation cycles		
	<b>The CAT 6 transmission performance is in complied with ANSI/TIA 568.2-D requirement</b>			
	<b>Suitable for cable jacket OD</b>	4.5-7.5mm.		
	<b>The mated plug should comply with IEC60603-7 and TIA-1096 chapter 4 and 5 requirements</b>			

**B Dimensional Drawing**



**C How to order**

**LP-TCRJ458P8CC6 RJ45 8P8C CAT 6 U/UTP Industrial Plug for AWG23 solid wire conductors or AWG26-22 stranded wire conductors.**



**Cable ID: C6 UTP CABLE LP-TCRJ458P8CC6 1M TEST**

Test Limit: TIA Patch Cord Cat6 1.0m

Limits Version: V7.6

Date / Time: 08/19/2022 03:43:18 PM

Headroom 1.7 dB (NEXT 1,2-4,5)

Cable Type: Cat 6 U/UTP

NVP: 69.0%

Main: Versiv

S/N: 1707014

Software Version: V6.7 Build 1

Calibration Date: 02/23/2022

Adapter: DSX-8000 (DSX-PC6)

S/N: 3544526

**Test Summary: PASS**

Remote: Versiv

S/N: 1707027

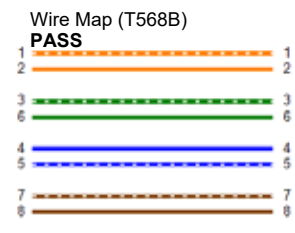
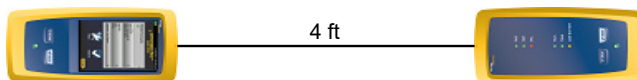
Software Version: V6.7 Build 1

Calibration Date: 02/23/2022

Adapter: DSX-8000R (DSX-PC6)

S/N: 3549014

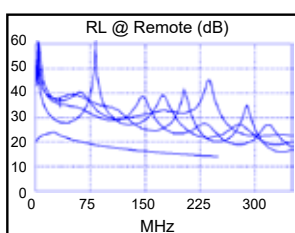
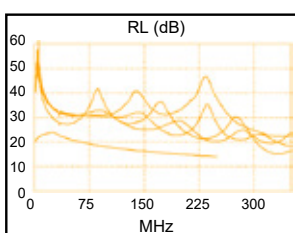
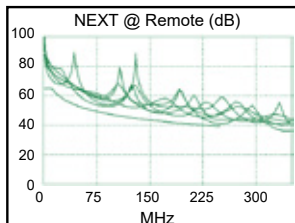
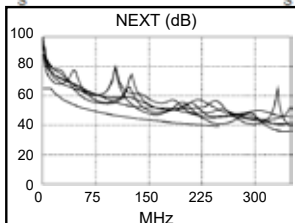
Length (ft)	[Pair 1,2]	4
Prop. Delay (ns)	[Pair 3,6]	6
Delay Skew (ns)	[Pair 1,2]	0
Resistance (ohms)	[Pair 4,5]	0.43



Worst Case Margin Worst Case Value

PASS	MAIN	SR	MAIN	SR
Worst Pair	1,2-4,5	1,2-4,5	1,2-4,5	1,2-4,5
NEXT (dB)	1.7	1.8	1.8	2.0
Freq. (MHz)	249.5	246.5	250.0	250.0
Limit (dB)	39.3	39.4	39.2	39.2

PASS	MAIN	SR	MAIN	SR
Worst Pair	7,8	7,8	3,6	3,6
RL (dB)	4.4	5.1	6.2	6.2
Freq. (MHz)	34.0	33.8	250.0	250.0
Limit (dB)	22.7	22.7	14.0	14.0



LinkWare™ PC Version 10.8.1



**Cable ID: C6 UTP CABLE LP-TCRJ458P8CC6 2M TEST**

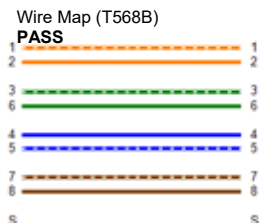
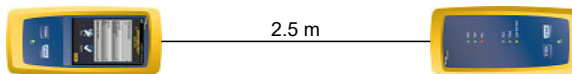
**Test Summary: PASS**

Test Limit: TIA Patch Cord Cat6 2.0m  
 Limits Version: V7.6  
 Date / Time: 08/30/2022 10:51:04 AM  
 Operator: Kiki  
**Headroom 3.7 dB (NEXT 1,2-3,6)**  
 Cable Type: Cat 6 U/UTP  
 NVP: 69.0%

Main: Versiv  
 S/N: 1652110  
 Software Version: V6.7 Build 1  
 Calibration Date: 09/01/2021  
 Adapter: DSX-8000 (DSX-PC6)  
 S/N: 3476107

Remote: Versiv  
 S/N: 1652043  
 Software Version: V6.7 Build 1  
 Calibration Date: 09/01/2021  
 Adapter: DSX-8000R (DSX-PC6)  
 S/N: 3485182

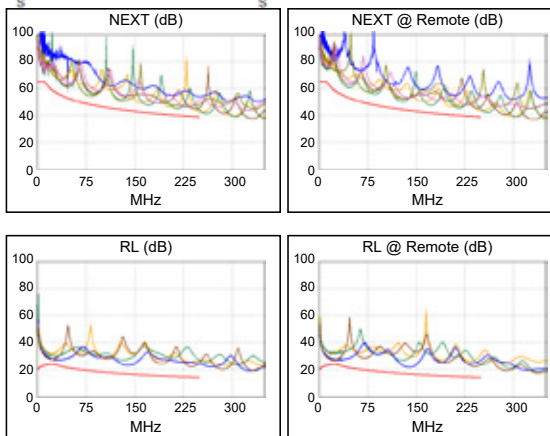
Length (m)	[Pair 1,2]	2.5
Prop. Delay (ns)	[Pair 1,2]	12
Delay Skew (ns)	[Pair 1,2]	0
Resistance (ohms)	[Pair 7,8]	1.04



Worst Case Margin Worst Case Value

	MAIN	SR	MAIN	SR
<b>PASS</b>				
Worst Pair	1,2-3,6	1,2-3,6	1,2-3,6	1,2-3,6
<b>NEXT (dB)</b>	3.7	4.5	3.7	4.5
Freq. (MHz)	250.0	250.0	250.0	250.0
Limit (dB)	38.8	38.8	38.8	38.8

	MAIN	SR	MAIN	SR
<b>PASS</b>				
Worst Pair	4,5	7,8	7,8	4,5
<b>RL (dB)</b>	3.2	2.8	7.9	5.2
Freq. (MHz)	25.8	24.9	236.5	141.0
Limit (dB)	23.9	24.0	14.2	16.5



LinkWare™ PC Version 11.1

Project: DEFAULT  
 Site: Not Set  
 Floor: Not Set  
 Rack: Not Set  
 FPP-C6- .flw

Building: Not Set  
 Room: Not Set  
 Patch: Not Set

