

LP-P8CAXX Performax® series Cat6A Metallic Fully Shielded Patch Panels with 24, 48 and 72 Ports and ground terminal connection

LPP8CAXX_SS_ENB01W

Features

- Fully Shielded, completely enclosed.
- Frame Grounding Post easily handled.
- ETL verified to the 10G Channel transmission performance in compliance with TIA/EIA 568 D 10G & ISO/IEC 11801 standards.
- UL and CSA approved.
- Superior performance to traditional designs.
- 568-A and 568-B compatible.
- 90° Kröne punch rear connectors.
- Individual grounding screws for cabling ground wires.
- Individual locking gates for every single port to avoid dust and other contaminants into the connection system
- Rugged Construction.
- Cable Management clips at the rear of the unit.
- Backward compatible with Cat6 systems.
- Black durable and elegant finish.
- High performance 50 micro-inches of gold plating over Phosphor Bronze with Nickel Plating, for a minimum of 750 cycles complying the (ISO/IEC 11801, IEC 60603-7-51) standards.
- 10/100/1000/10000M (10G).
- Outstanding price/performance ratio.
- Available in 24, 48 and 72 ports.
- Fully compatible with 19" rack mount standards, 1U Rack Unit height.



LP-P8CAXX Performax® series Cat6A Metallic Fully Shielded Patch Panels with 24, 48 and 72 Ports and ground terminal connection

The Performax® series of Cat6A 100% Shielded patch panels by LanPro are made to the most stringent specifications in order to give a long lasting service to your structured cabling installation.

These patch panels are built with the best materials and finishes that comply with the Industry Standards of quality and performance.

No detail has been left behind in the design and manufacture of this product. These Patch Panels have 24, 48 or 72 ports, with 0° Fully Shielded RJ45 connectors with individual locking gates for every single port to avoid dust and other contaminants to enter into the connection system and 90° Kröne punch rear connectors with individual grounding screws for cabling ground wires.

The 10G Channel transmission performance is in compliance with TIA/EIA 568 D 10G & ISO/IEC 11801 standards.

Connectors have 50 micro-inches of gold plating over Phosphor Bronze with Nickel Plating, for a minimum of 750 cycles complying the (ISO/IEC 11801, IEC 60603-7-51) standards.

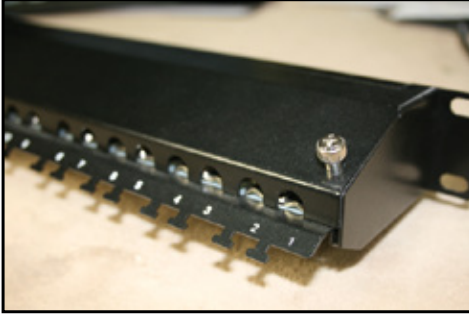
A Technical Specifications

MATERIAL		
Front Panel		1.2 mm thickness with optional color painted (24 & 48 Port)
Identification	I.D. Plate	PBT+Glass Fiber, UL 94V-0
	Paper	PBT+Glass Fiber, UL 94V-0
	I.D. Bracket	ABS, UL 94V-0.
RJ45 Jack	Housing:	PBT+Glass Fiber, UL 94V-0
	Contact Bracket	PBT+Glass Fiber, UL94V-0
RJ45 Contact	Material	Phosphor Bronze with Nickel Plating
	Finish	50 micro-inch Gold Plated on Plug contact area
J45 Jack Shield		Bronze with Tin Plated
Dust Cover		Polycarbonate, UL 94V-0
IDC	Housing	PC+Glass Fiber, UL 94V-0
	Terminal	Phosphor Bronze with tin plating
Ground Wire		18 AWG Wire, with Green/Yellow strip color, 400mm length between terminals
PCB:		FR4, UL 90V-0
Paint Colors		standard Black(RAL9005) optionally: Gray(RAL7035)
Grounding posts		1 screw type with pair of nuts and lock washer

PERFORMANCE		
T568A &T568B compatible with wiring sticker on PCB.		
Insertion force		30 N max. (IEC 60603-7-51)
Retention strength		7.7 kg entre el conector hembra (Jack) y la clavija.
Operating Temperature		-10°C a 60°C (ISO/IEC 11801, ANSI/TIA/EIA568 D).
Life (Mating Cycles)	Jack	750 cycles min.(ISO/IEC 11801, IEC 60603-7-51).
	IDC	Suitable for 22-26 AWG stranded and solid wire. Compatible with Kröne punch-down tool.
The 10G Channel transmission performance is in compliance with TIA/EIA 568B.2-10 10G & ISO/IEC 11801 standard		
Fully Shielded		

DIMENSIONS	
Width	19 inch, 464.8+-0.5 mm between mounting holes
Height	1 RU, 44.0+-0.3 mm (For both 24 & 48 Port)
Depth	109.0 +-0.5mm
Note: The micro-inch (μ in) is a common imperial unit of distance equal to one millionth of an inch, or 25.4 nanometers (nm) , or 1μ in = 0.0254 μ m.	

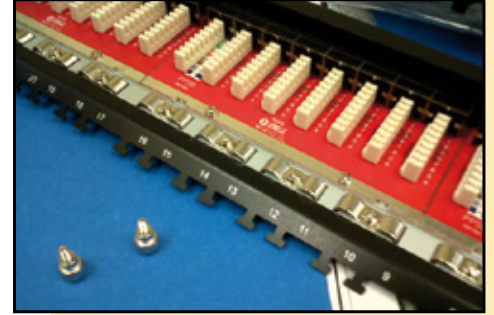
B Details of construction



Fully shielded and easy to open with hand driven chromed nut



Frame Grounding post



Krone connectors, individual cable shield grounding and Tie-wrap posts

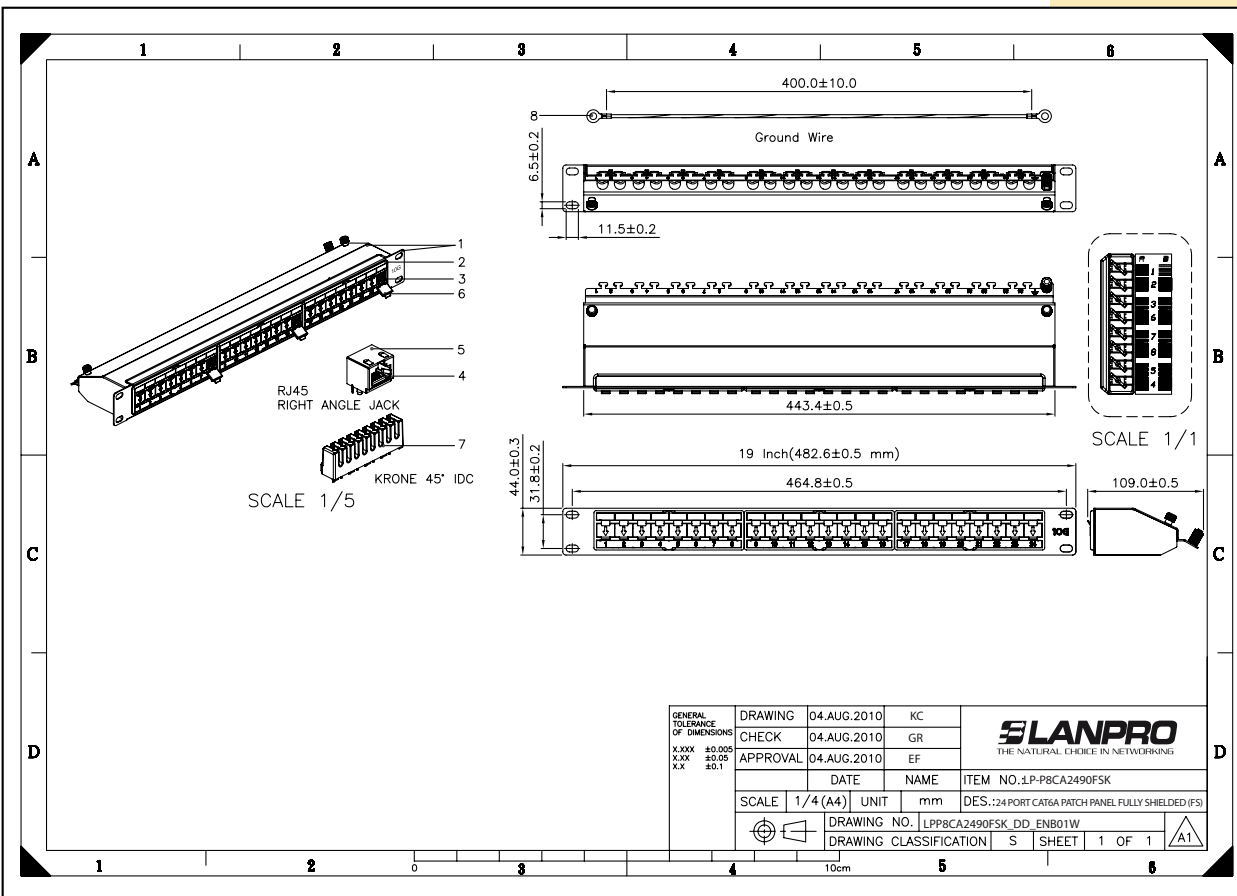


Individual locking gates open

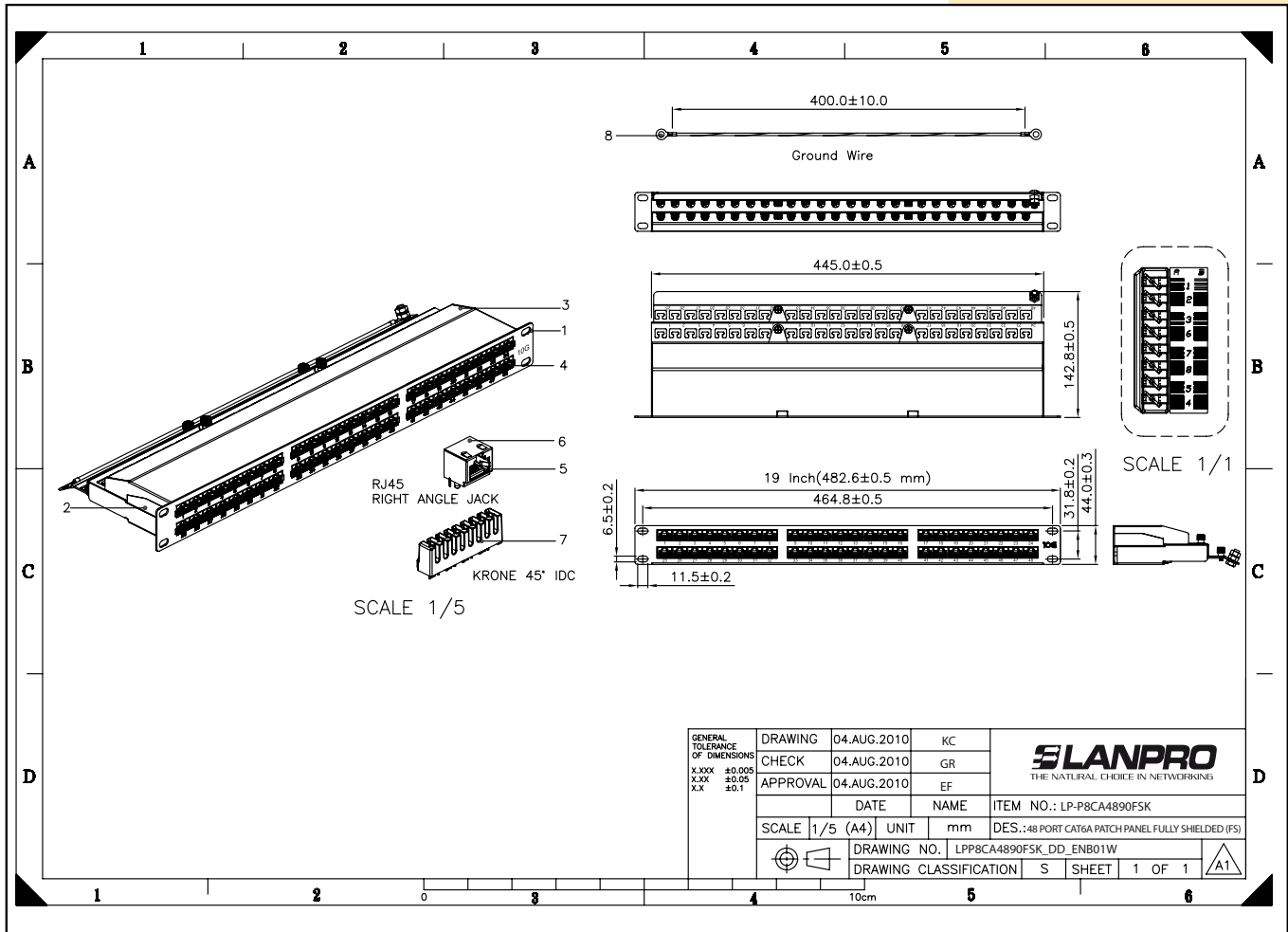


Individual locking gates closed

C Dimensional Drawings



LP-P8CA2490FSK
Performax®
series 24 Port
Cat6A Fully
Shielded Patch
Panel.



LP-P8CA4890FSK Performax® series 48 Port Cat6A Fully Shielded Patch Panel.

D How to Order

LP-P8CA2490FSK	Performax® series 24 Port Cat6A Fully Shielded Patch Panel.
LP-P8CA4890FSK	Performax® series 48 Port Cat6A Fully Shielded Patch Panel.
LP-P8CA7290FSK	Performax® series 72 Port Cat6A Fully Shielded Patch Panel.

LanPro is continuously improving its products and reserves the right to change specifications and availability without prior notice