

LP-P8CAUSXX**Performax® series Cat6A Unshielded Patch Panels with 24, 48 and 72 Ports.**

LPP8CAUSXX_SS_ENB01W

Features

- 24, 48 or 72 Ports.
- 0° UTP Jacks.
- 180° Connectors for 110 Punch Tools with 200 punching cycles minimum.
- Conforms to the ANSI/TIA/EIA-568 B.2-1 which results in a ≥ 2.0 dB margin of Worst Pair Next.
- 50 micro-inches of gold plating over Phosphor Bronze with Nickel Plating, for a minimum of 750 cycles.
- 19" rack mountable, using 1 U (24 Port), 2 U (48 Port) or 3 U (72 Port) vertical space on the rack.



LP-P8CAUSXX
Performax® series Cat6A Unshielded
Patch Panels with 24, 48 and 72 Ports.

The Performax ® series of Cat6A Unshielded patch panels by LanPro are made to the most stringent specifications in order to give a long lasting service to your structured cabling installation.

These patch panels are built with the best materials and finishes that comply with the Industry Standards of quality and performance.

No detail has been left behind in the design and manufacture of this product

These Patch Panels have 24, 48 or 72 ports, with 0° Unshielded RJ45 connectors and 180° New 110 punch rear connectors.

The Cat6A permanent Link Test Conforms to the ANSI/TIA/EIA-568 B.2-1 which results in a ≥ 2.0 dB margin of Worst Pair Next.

Connectors have 50 micro-inches of gold plating over Phosphor Bronze with Nickel Plating, for a minimum of 750 cycles.

A Technical Specifications

	Electrical	Ratings
1	Voltage	125 VAC RMS
2	Current	1.5 A
3	Contact Resistance	30 mOhm Maximum
4	Insulation Resistance	1000 MOhm Minimum @ 500 VDC
5	Dielectric Strength	750 VAC RMS 60 Hz 1 Minute
6	C6 Permanent Link	Conform to ANSI/TIA/EIA-568 B.2-1
	Mechanical	Ratings
1	Housing Material	PBT+15%GF UL95V0
2	Panel Frame	S45C Powder Coating in Black Color
3	IDC Material	PC UL94V-0 Contact Phosphor Bronze, Tin Plated
4	RJ45 Jack Life	750 Cycles Minimum
5	IDC Life	200 Cycles Minimum
6	Wire	AWG 24-26
7	TIA CAT 6A permanent Link Test	Worst Pair Next Margin ≥2.0dB
8	Retentiveness of Insertion Structure	50N 60+-S
9	Width	19 inch, 464.8±0.5 mm between mounting holes
	Height:	24 Port: 1 RU, 44.2±0.3 mm 48 Port: 2 RU, 88.0±0.3 mm 72 Port: 3 U, 132.0±0.3 mm
	Depth	122.0±0.2mm
	Environmental	Ratings
1	Storage	-40°C to +85°C
2	Operation	-40°C to +85°C

Notes:

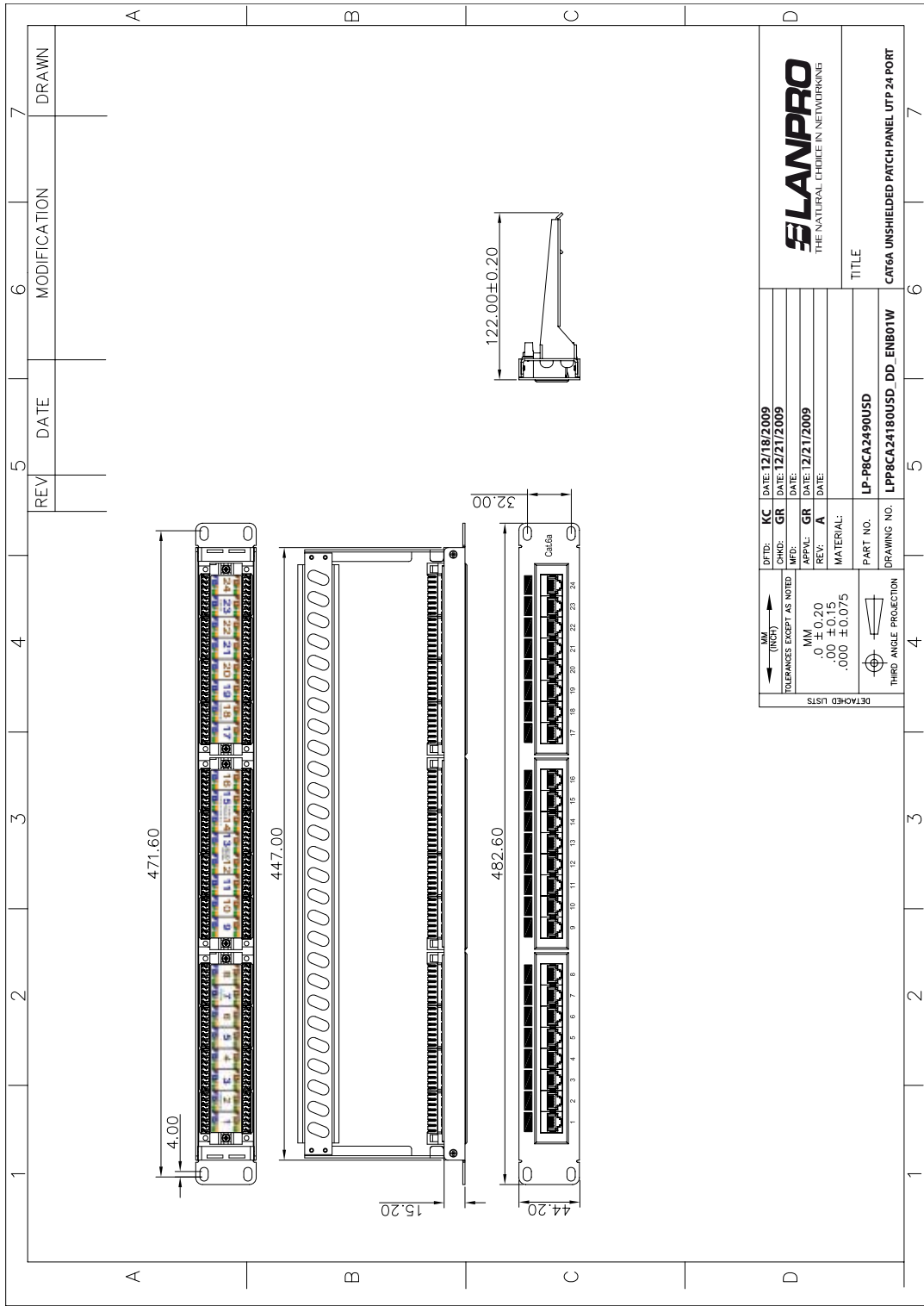
① The micro-inch (μ in) is a common imperial unit of distance equal to one millionth of an inch, or 25.4 nanometers (nm) , or 1 μ in = 0.0254 μm.

② Mates with modular Plug conforming to FCC Part 68, Subpart F.

B Different views

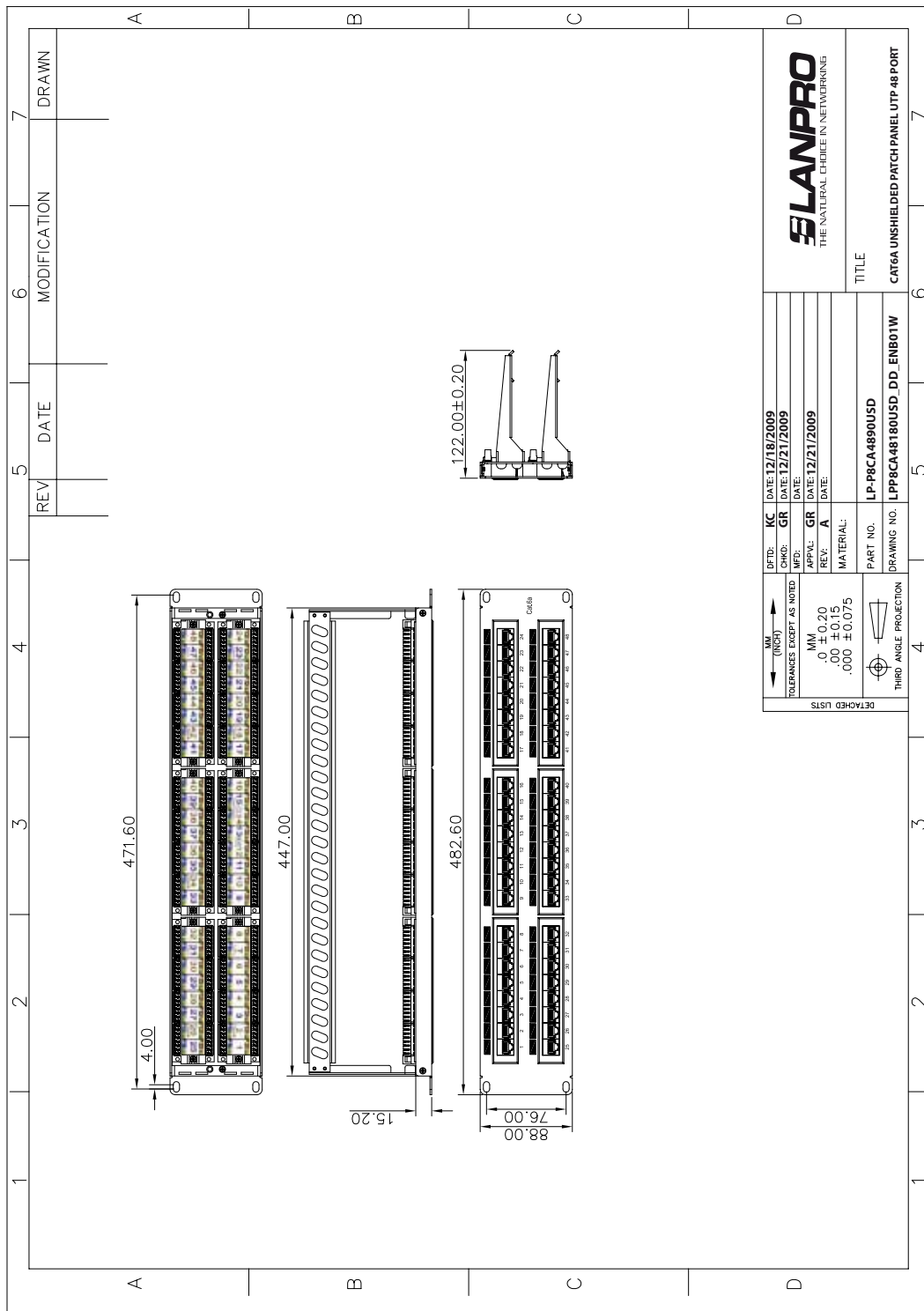


C Dimensional Drawings



LP-P8CA24180USD Performax® series 24 Port Cat6A Unshielded Patch Panel, Black Color

C Dimensional Drawings



LP-P8CA48180USD Performax® series 48 Port Cat6A Unshielded Patch Panel, Black Color

D How to Order

- LP-P8CA24180USD Performax® series 24 Port Cat6A Unshielded Patch Panel, Black Color.**
- LP-P8CA48180USD Performax® series 48 Port Cat6A Unshielded Patch Panel, Black Color.**
- LP-P8CA72180USD Performax® series 72 Port Cat6A Unshielded Patch Panel, Black Color.**