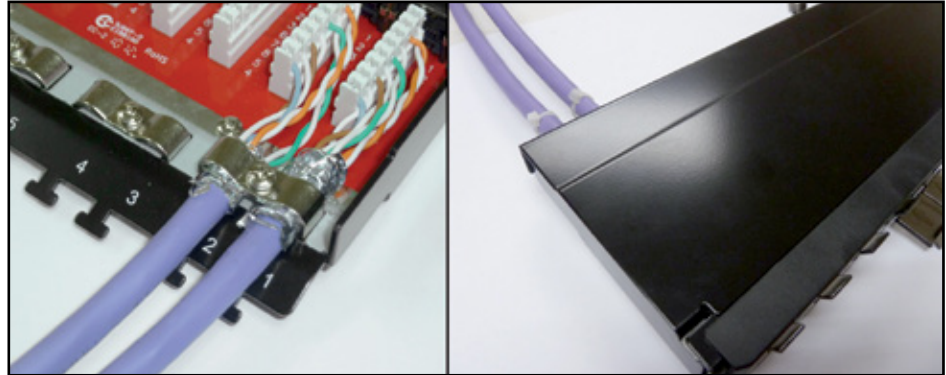


**Steps to follow for the proper termination of *PERFORMAX* Series 8000 CAT 6A LP-P8CA2490FSK Patch Panels.**

LPP8CA2490FSK\_M123\_ENB01W



**Steps to follow for the proper termination of *PERFORMAX* Series 8000 CAT 6A LP-P8CA2490FSK Patch Panels.**

**1**

The termination Standard must be chosen first.

**Norm A**

- \* White-Green
- \* Green
- \* White -Orange
- \* Blue
- \* White - Blue
- \* Orange
- \* White - Brown
- \* Brown

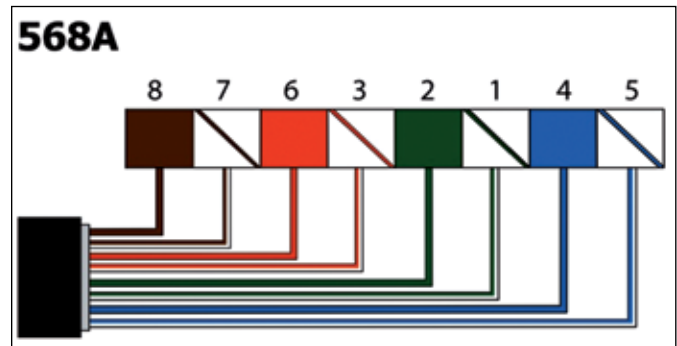


Figure 1

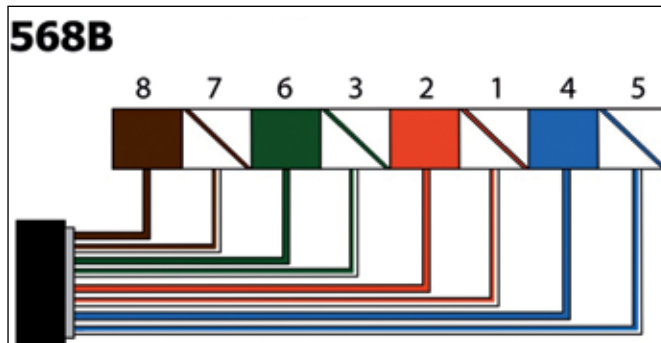


Figure 2

**Norm B**

- \* White - Orange
- \* Orange
- \* White - Green
- \* Blue
- \* White - Blue
- \* Green
- \* White - Brown
- \* Brown

**2**

The needed tools are shown in figure 3.

<b>a.-</b>	Connector termination-compression and cutting tool (LPT-210C).
<b>b.-</b>	Universal stripping tool. ( LPT-S501A).
<b>c.-</b>	FTP CAT 6A cable for each connector.
<b>d.-</b>	(1) <b>LP-P8CA2490FSK</b> CAT 6A Series 8000 LanPro Patch Panel.
<b>e.-</b>	1 Measurement scale.
<b>f.-</b>	1 Punch Tool for structured Data and Telephone cabling termination with 110/88 or Kröne option. (LPT-314BK).



**Figure 3**

**3**

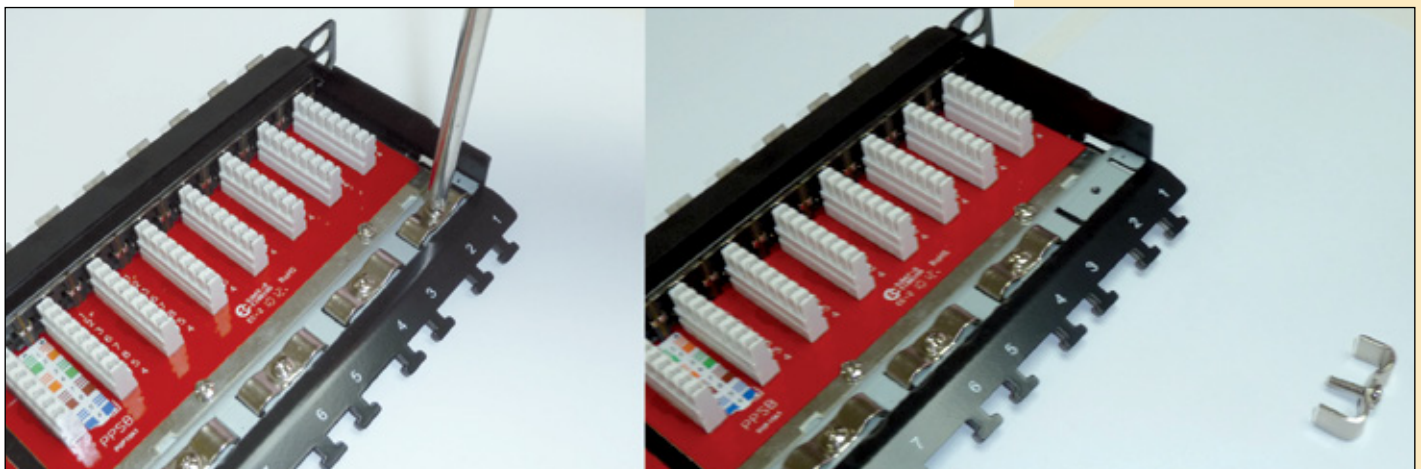
Please proceed now to extract the rear cover of the Patch Panel as shown in figure 4.



**Figure 4**

**4**

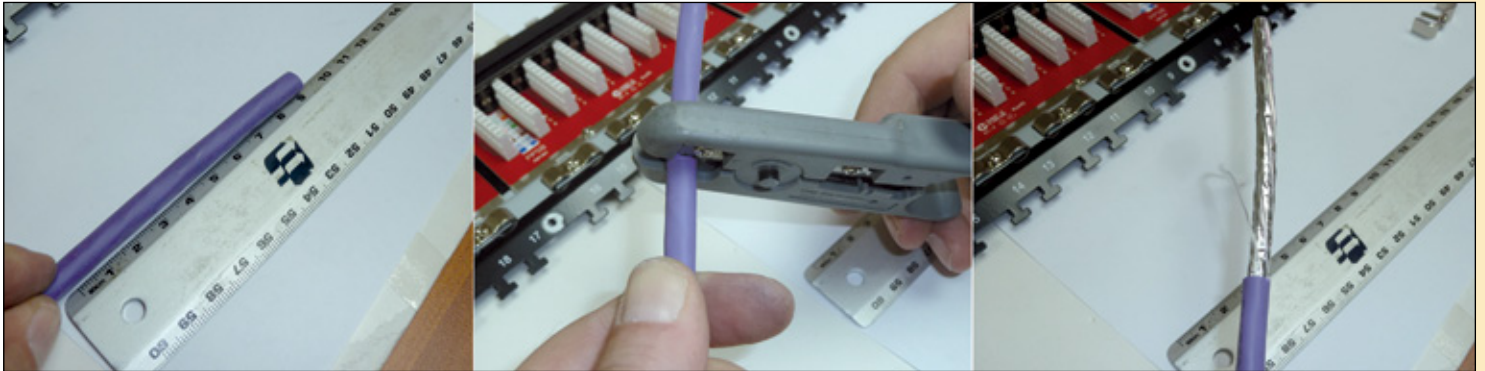
Please proceed to extract the grounding fastener as shown in figure 5.



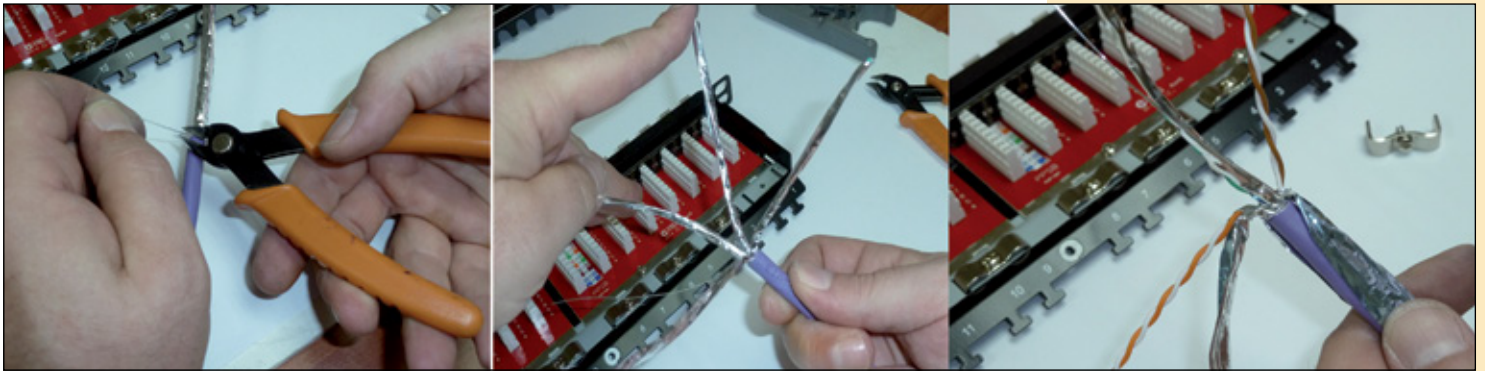
**Figure 5**

**5**

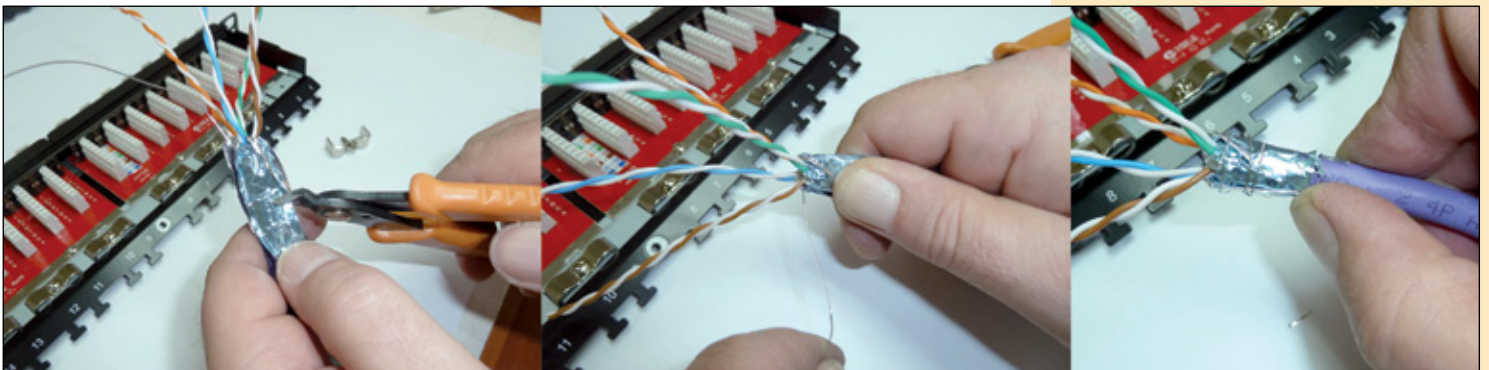
Please proceed to strip 9 cm of the cable jacket as shown in figure 6.

**Figure 6****6**

Please proceed to cut the rip cord, and separate each pair of copper conductors and the foil as shown in the images of figure 7.

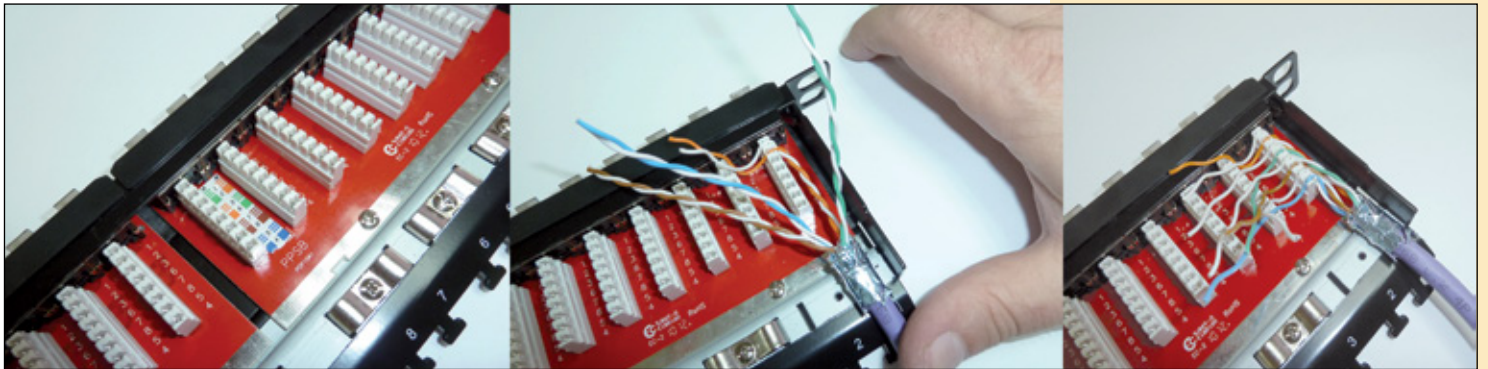
**Figure 7****7**

Please proceed to cut the excess and to use the drain wire to contact the foil and make a compact bundle to be hold by the cable grounding and fastening bracket as shown in figure 8.

**Figure 8**

**8**

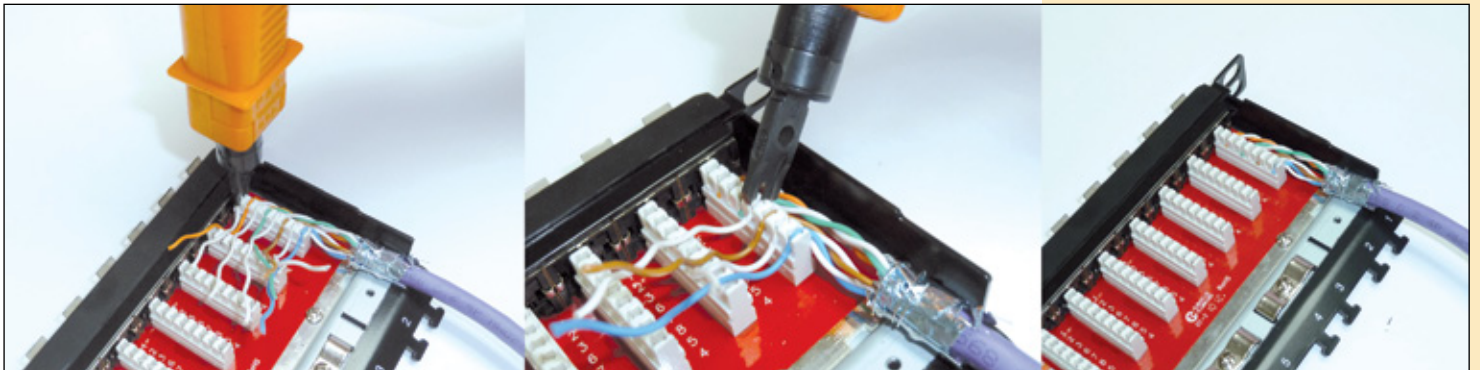
Please proceed to verify the termination standard used and insert each wire accordingly in the IDS of the connector, as shown in the images of figure 9, (E.G.: 568B).



**Figure 9**

**9**

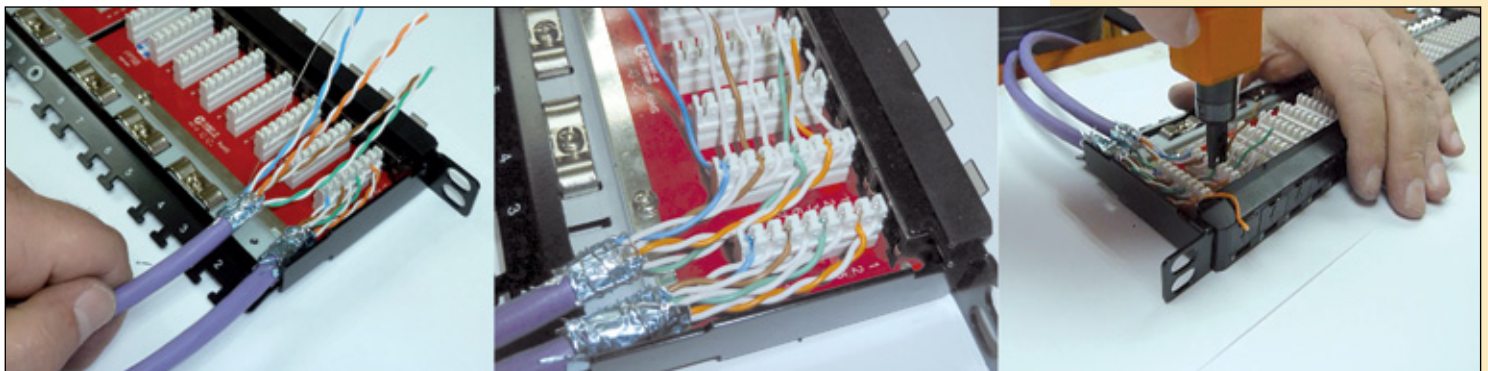
Please proceed to punch down each copper wire as shown in the group of images of figure 10.



**Figure 10**

**10**

Continue with each wire until completion of each termination, as shown in the images of figure 11, maintaining the chosen termination norm, in this case the: 568B.



**Figure 11**

**11**

Proceed to replace the screw and cable fastener as shown in the group of images of figure 12.



**Figure 12**

**12**

Proceed to place the coverplate and fix the cables to the patch panel with the supplied tie-wrap, and cutting the excess length as shown in the group of images of figures 13 and 14.



**Figure 13**



**Figure 14**

*LanPro is continuously improving its products and reserves the right to change specifications and availability without prior notice.*