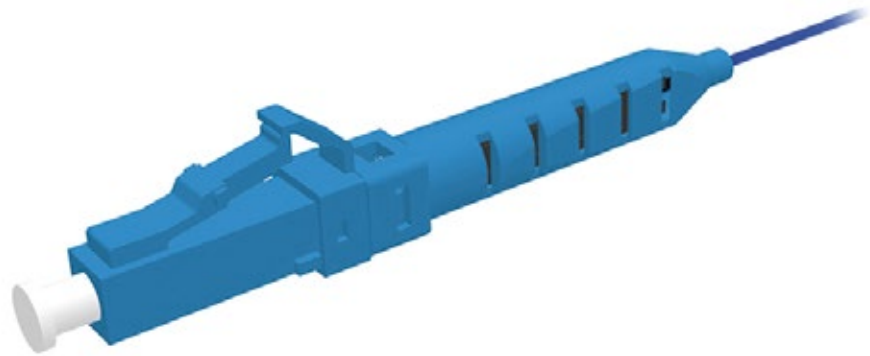
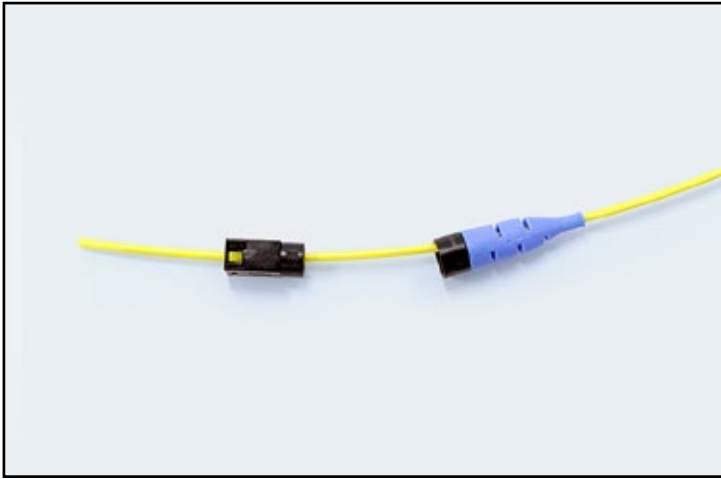


**123 Manual, LP-FIFLCXX In-Fusion® Field Fusion-splicing connector LC
Assembly Instructions**

LPFIFLCXX_M123_ENB01W

**123 Manual****LP-FIFLCXX In-Fusion® Field
Fusion-splicing connector LC****Assembly Instructions**

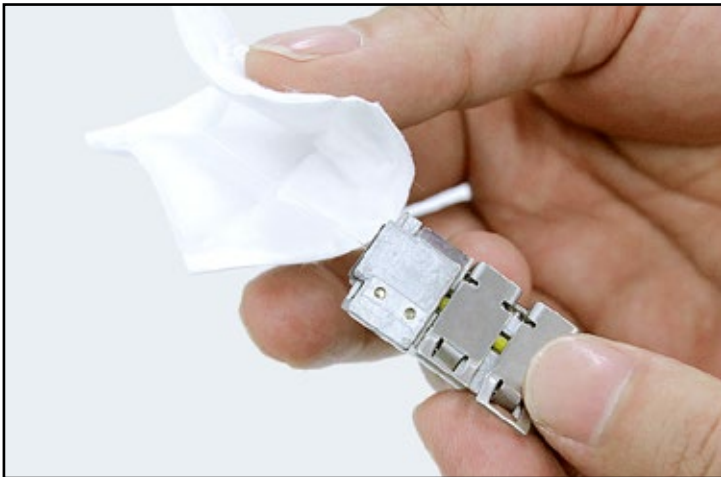
A Assembling procedure:



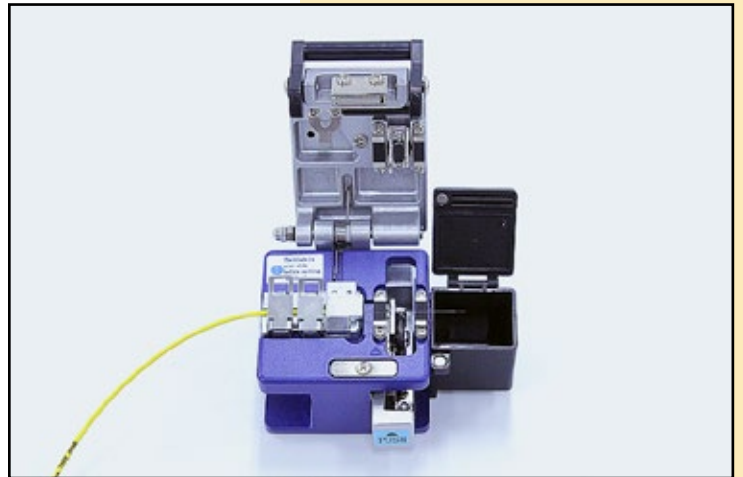
1. Pass the cable through the boot and the boot cap



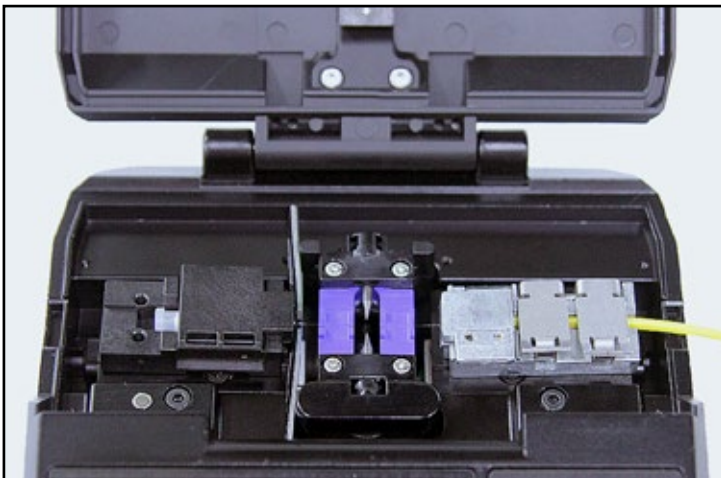
2. Strip Drop cable with a stripper



3. Clean the stripped cable with alcohol soaked tissue



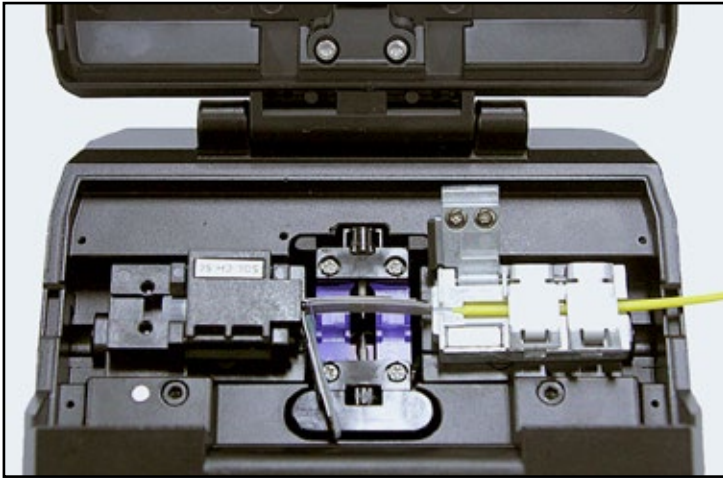
4. Cleave it with a cleaver



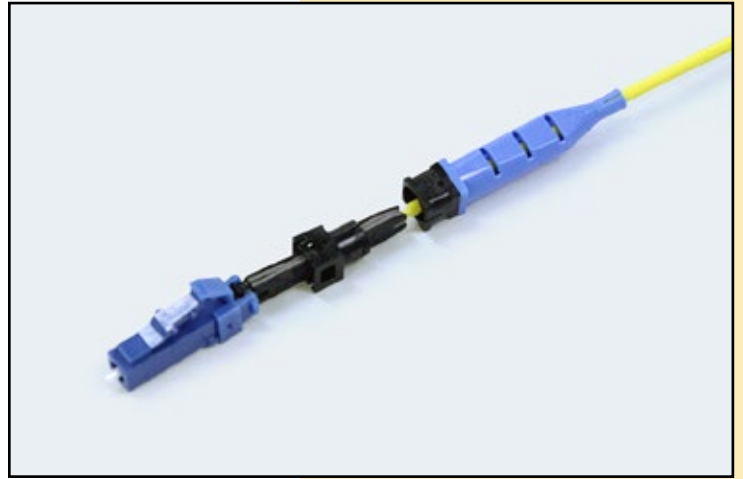
5. Place the **LP-FIFLCXX** onto **LPT-FIFCM1000**



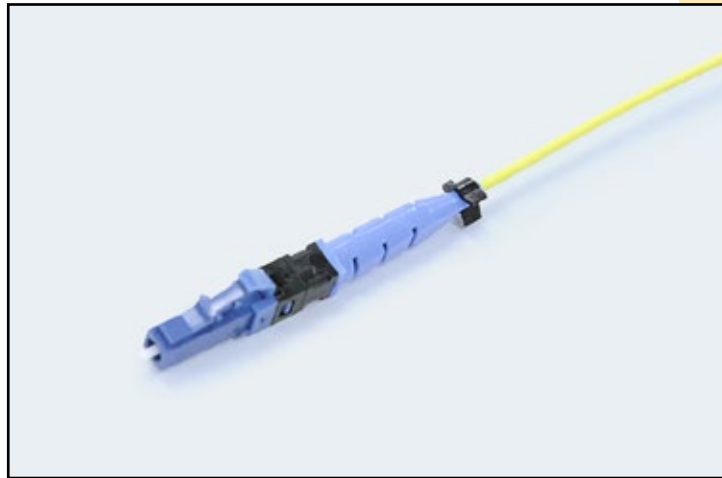
6. Splice



7. Fold wings together for spliced-point protection



8. Assemble the boot and the cap



9. Assemble the Housing