

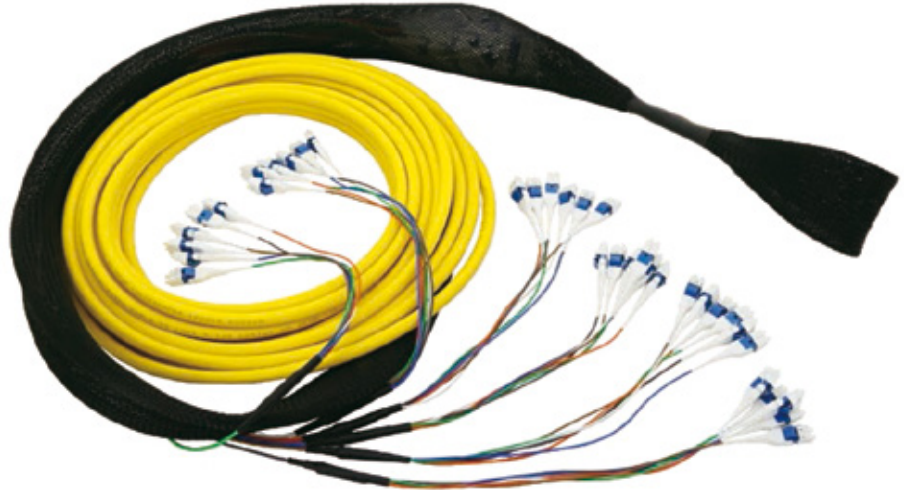
LP-F50XX

Pre-Terminated Mini Breakout Cable Series

LPF50XX_PFD_ENB01W

Features

- Suitable for DATA CENTER.
- ST, FC, SC, and LC are available. PC, SPC, UPC and APC polish meet standard requirement.
- Pulling eye design to fit for different installation environment.
- Standard breakout lengths can be staggered for better cabling routing and management.
- High precision factory pre-terminated and factory tested assemblies made according to TIA/EIA and IEC standards.
- Fiber Compatibility: OM1, OM2, OM3, OM4, OS1/OS2.



Optional: Pull eye attachment

LP-F50XX

Pre-Terminated Mini Breakout Cable Series

LanPro's pre-terminated fiber assemblies are used to fanout the MTP®/MPO connectors terminated on ribbon cables into simplex connectors with 900um furcation.

This compact design solution particularly suitable for installation and connection of complex fiber optical infrastructures and also flexible for connections from one cabinet to another or horizontal patch extension from consolidation point to the workstation outlets.

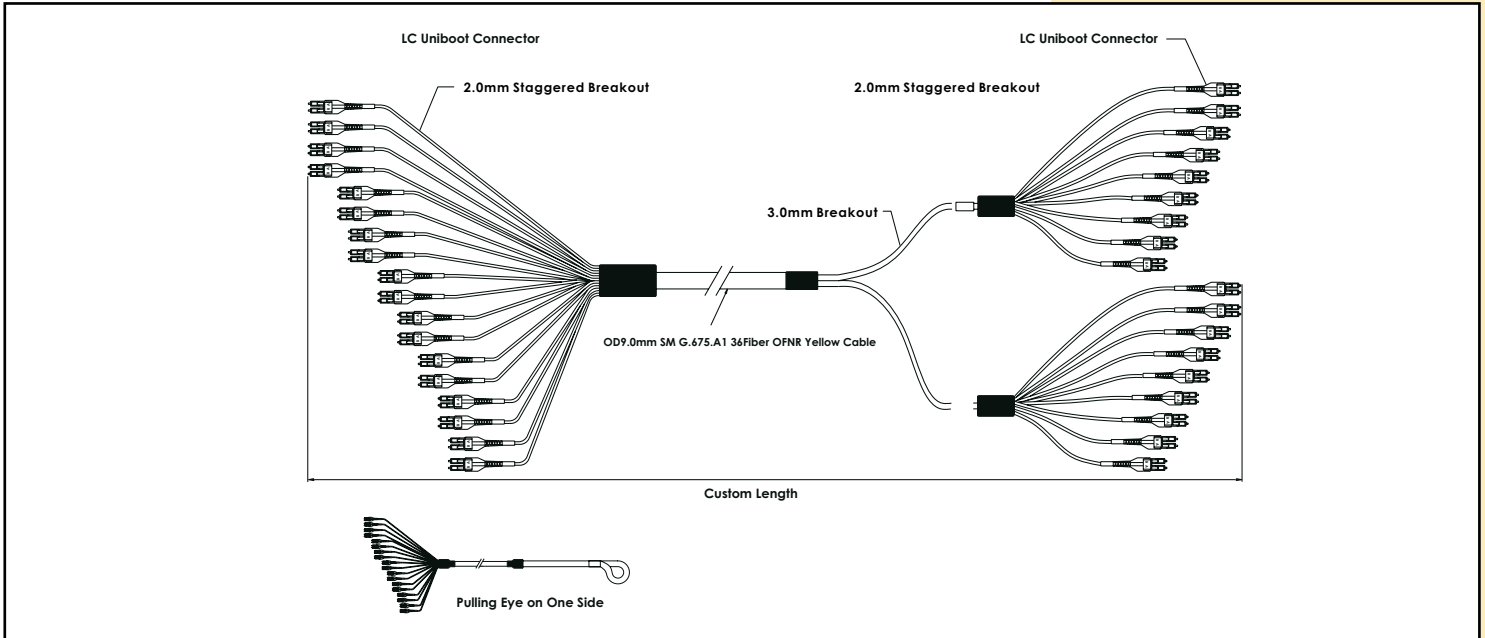
A Applications:

Provide interconnect and cross-connect of applications over installations in entrance facilities, telecommunications rooms and data center

- OM1 (62.5/125um): for LED-based propagation
- OM2 (50/125um): for LED or laser-based propagation
- OM3 & OM4 (50/125um): for VCSEL-based propagation
- OS1 & OS2 (9/125um): Laser-based propagation.



B Dimensional Drawing (Configuration Example):



C How to Order:

LP-F50BKBAFCFC0032

LP-F50	FIBER TYPE		BREAKOUT CABLE TYPE		COLOR		JACKET MATERIAL		A CONNECTOR	
LANPRO MINI BREAKOUT CABLE	A	MM 62.5/125 um	B	4C 2.0mm Jacket	A	BL	A	PVC	AA	FC One piece (MM)
	B	MM 50/125 um	E	6C 2.0mm Jacket	B	OR	D	PVC Both end pulling eye	AB	FC One piece (MM Low Loss)
	C	10G 50/125um	H	8C 2.0mm Jacket	C	GN	E	PVC OFNP	AC	FC One piece (SM SPC)
	D	OM3 50/125um	K	12C 2.0mm Jacket	D	BR	H	PVC OFNP Both end pulling eye	AD	FC One piece (SM UPC)
	E	OM4 50/125um	L	24C 2.0mm Jacket	E	GY	I	LSZH	AE	FC One piece (SM APC)
	F	SM(G625D) 9/125um			F	WH	L	LSZH Both end pulling eye	BA	ST (MM)
	H	SM(G67A2) 9/125um			G	RD			BB	ST (MM Low Loss)
					H	BK			BC	ST (SM SPC)
					I	YL			BD	ST (SM UPC)
					J	VT(PU)			CF	SC II w/Clip (MM)
					K	RS(PK)			CG	SC II w/Clip (MM Low Loss)
					L	AQ			CH	SC II w/Clip (SM SPC)
									CI	SC II w/Clip (SM UPC)
									CJ	SC II w/Clip (SM APC)
								DF	LC w/Clip (MM)	
								DG	LC w/Clip (MM Low Loss)	
								DH	LC w/Clip (SM SPC)	
								DI	LC w/Clip (SM UPC)	
								DJ	LC w/Clip (SM APC)	

B CONNECTOR		LENGTH	
AA	FC One piece (MM)	0032	3M
AB	FC One piece (MM Low Loss)	0052	5M
AC	FC One piece (SM SPC)	0102	10M
AD	FC One piece (SM UPC)	0152	15M
AE	FC One piece (SM APC)	0202	20M
BA	ST (MM)	0252	25M
BB	ST (MM Low Loss)		
BC	ST (SM SPC)		
BD	ST (SM UPC)		
CF	SC II w/Clip (MM)		
CG	SC II w/Clip (MM Low Loss)		
CH	SC II w/Clip (SM SPC)		
CI	SC II w/Clip (SM UPC)		
CJ	SC II w/Clip (SM APC)		
DF	LC w/Clip (MM)		
DG	LC w/Clip (MM Low Loss)		
DH	LC w/Clip (SM SPC)		
DI	LC w/Clip (SM UPC)		
DJ	LC w/Clip (SM APC)		

Example:

LP-F50BKBACFCF0032	Fiber Optic Mini Breakout cable, Multimode 50/125um, 12C 2.0mm PVC Orange color jacket, FC one piece MMto FC one piece MM, 3m length.
---------------------------	---