

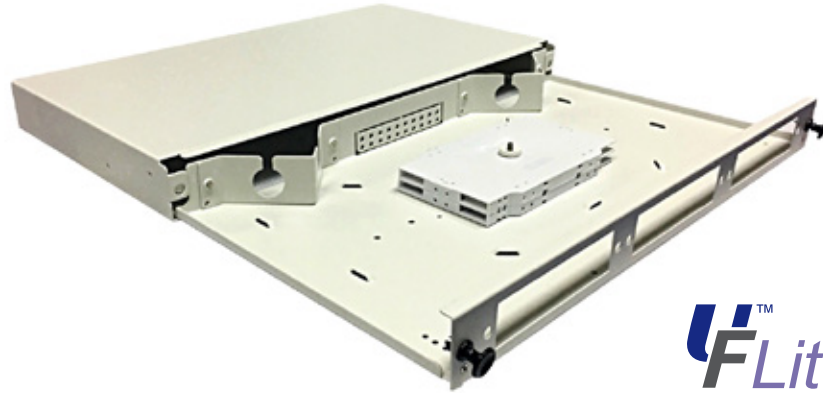
LP-F186XCC

**UniFiber™ Lite Optical Modular Distribution Frame (ODF),
Chassis with up to 4U rack and capacity of up to 192 Ports, Rack Mounted, Unloaded**

LPF186XCC_PFD_ENB01W

Features:

- Number of adaptor ports (Not included): up to 192, depending on the number of Rack Units and adaptor plates used.
- Height is 1U, 2U, 3U and 4U.
- The chassis is made of hardened steel & insulation materials, thus having excellent mechanical and electrical performance, it is a solid and durable equipment.
- Heavy duty rack-mount. Non plastic. Non aluminum. No weakness whatsoever. Uses the same size adapter Interchangeable panels of 130*30mm.
- Neat. Less inventory.
- Attractive Ivory color, the Standard color for this kind of equipment, but you might chose also Black, White or Grey.
- Several lateral as well as up/down openings to provide options to customers to feed the cable inside the unit. All metal edges protected to avoid cutting and/or abrasion.
- Compliances: ANSI/TIA/EIA 568 D. ISO/IEC 11801.
- By closing the door, tampering is prevented and it is almost impossible to accidentally damage the cables.



**LP-F186XCC
UniFiber™ Lite Optical Modular Distribution Frame (ODF),
Chassis with up to 4U rack and capacity of up
to 192 Ports, Rack Mounted, Unloaded**

The UniFiber™ Lite Optical Distribution Frame (ODF), chassis with up to 4U rack and capacity up to 192 Ports, Rack Mounted Unloaded, is designed as a reliable fiber optic organization and distribution product, it is of the sliding type, convenient for operations and maintenance. It has a wide operation temperature range and is made for high density fiber optic installations.

A Other Features:

- Good organizer capability. Several anchor points for tie wraps.
- Rear metallic door for easy serving and check-ups
- Very attractive design to enhance the looking of your telecom cabinet.
- Holds three (3) 130*30mm mm adaptor panels per rack unit height.
- Strength member core clamp and shell insulated and with grounding lead.
- SC, APC, FC, ST, LC or MTP/MPO cassettes, adaptors panels available in separate.
- Supports adapter modules loaded with 12 and/or 24 fibers LC connectors.
- Reliable fiber lead grounding and perfect fix up.
- Reliable pigtail enclosure for protection and organization.
- For extensive field applications.
- Convenient for operation and its maintenance.
- Very good price for a versatile chassis.
- Detachable sliding tray for greater access.
- Stackable modular fusion splice trays.

B Specifications:

Description	Values
Number of possible Adaptor ports	(Not included): up to 192
Chassis (Matrix):	1.2 mm thickness SPCC
Dust covers:	PVC
Splice tray:	1-4 Set ABS+PC UL 94V-0
Places 130*30mm for adaptor panels per rack unit	3
Paint	Ivory (Standard) (BH-18011Q)
	Black
	White
	Gray
Environment temperature	-40°C ~+80°C
Relative humidity	≤85% (30°C)
Atmospheric pressure	70~106KPa
Insulation Resistance	≥2×10MΩ/500V (DC)
Voltage withstand capability	≤ 15kv (DC) /1min no spark-over and no flying arc
Fiber bending radius guaranteed	≥40 mm
Application	19" Inch Rack Mounting ODF

C How to Order:

LP-F1861IV	UniFiber™ Lite, 1U height for up to 48 Ports, Rack Mounted Optical Modular Distribution Frame (ODF), Unloaded, Ivory color.
LP-F1862IV	UniFiber™ Lite, 2U height for up to 96 Ports, Rack Mounted Optical Modular Distribution Frame, (ODF), Unloaded, Ivory color.
LP-F1863IV	UniFiber™ Lite, 3U height for up to 144 Ports, Rack Mounted Optical Modular Distribution Frame, (ODF), Unloaded, Ivory color.
LP-F1864IV	UniFiber™ Lite, 4U height for up to 192 Ports, Rack Mounted Optical Modular Distribution Frame (ODF), Unloaded, Ivory color.

LanPro is continuously improving its products and reserves the right to change specifications and availability without prior notice.