

LP-F181EBKYY 12 or 24 Port Wall Mounted Optical Distribution Frame (ODF) Unloaded and Black Painted.

LPF181EBKYY_SS_ENB01W

Features

- The chassis is made of hardened steel & insulation materials, thus having excellent mechanical and electrical performance. It is a solid and durable equipment.
- Two door key-locked
- Number of Adapters outputs (Not included): 12 or 24 ports.
- Holds up to four 130 x 29mm 6 port adapter holding panels.
- Lateral access openings for conduit entrance
- SC, FC, ST, LC, etc., adaptors panels available in separate order as unloaded or loaded.
- 24 cores maximum Capacity.
- Reliable pigtail enclosure for protection and organization
- For extensive field applications in optical fiber distribution.
- Convenient for its operation and maintenance.



LP-F181EBKYY 12 or 24 Port Wall Mounted Optical Distribution Frame (ODF) Unloaded and Black Painted

The 12 or 24 port Wall Mounted Optical Distribution Frame (ODF) unloaded and black painted, is designed as a reliable fiber optic organization and distribution product, is of the enclosure with two doors type, convenient for distribution operations and maintenance of fiber optics.

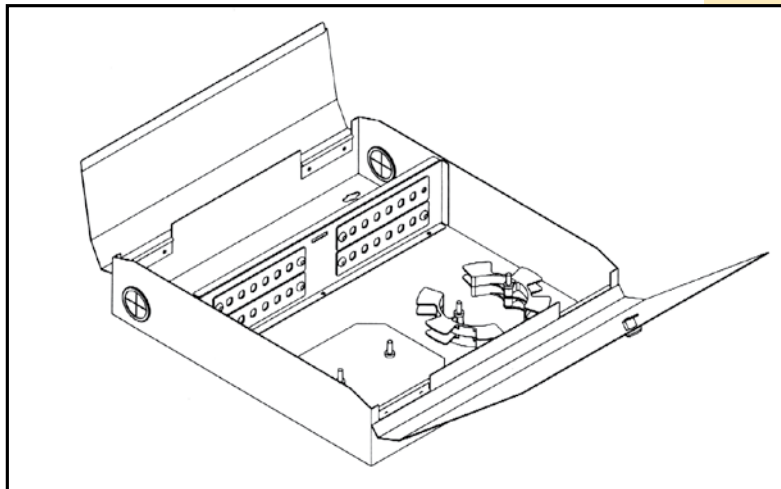
The 12 and 24 port ODF has wide operation temperature range and made for high density fiber optic installations.

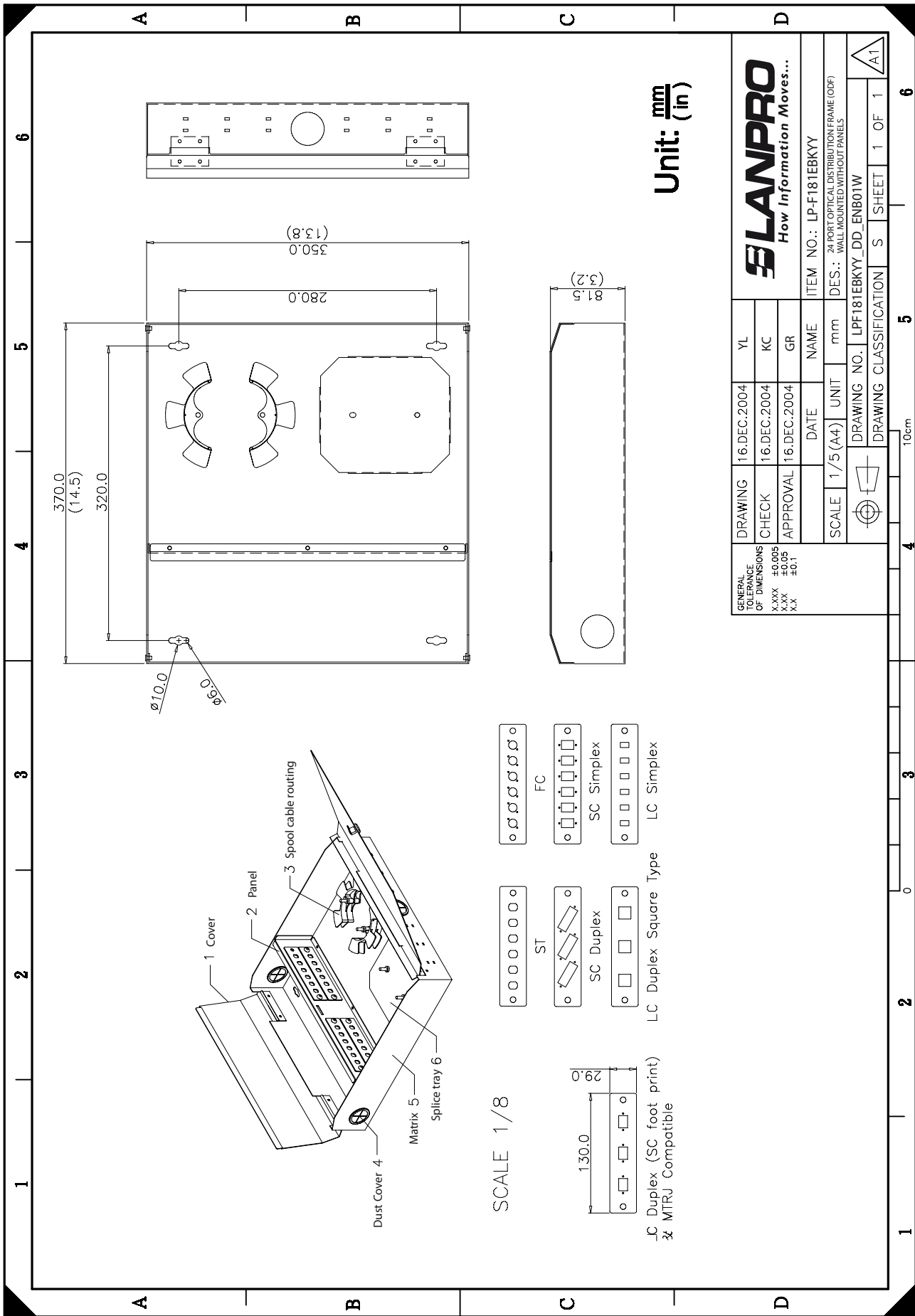
The user can decide which and how many adaptors to install by separately purchasing the 130 x 29 mm panels loaded with his / her choice of adaptors.



A 12 and 24 Port Rack Mounted Optical Distribution Frame (ODF) Specifications.

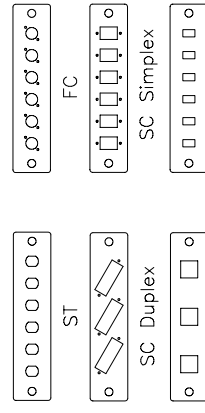
- Dust covers: Qty.: 3. PVC
- Matrix(Chassis): SPCC, 1.2mm thickness
- Cover: 1.0mm thickness SPCC
- Lock: 1 piece metal with circular key
- Panel for mounting adaptor panels: 1.5mm Thickness SPCC
- 4 empty places for 130 x 29 mm adaptor panels
- Splice tray: 2 Set Aluminum
- Spool Cable routing: ABS, UL 94V-0, 2 sets
- Fiber bending radius guaranteed: $\geq 40\text{mm}$
- Paint: Black Painted
- Dimensions: 3.2" x 13.8" x 14.5"(81.5 mm x 350 mm x 370 mm)
- Weight: 4.0 Kg
- Environment temperature: $-40^{\circ}\text{C} \sim +80^{\circ}\text{C}$.
- Relative humidity: $\leq 85\%$ (30°C).
- Atmospheric pressure: 70~106KPa.
- Insulation Resistance: $\geq 2 \times 10\text{M}\Omega/500\text{V}$ (DC).
- Application: to terminate and distribute optical fiber cables, they are convenient in order to organize and connect fiber optic links.
- It can appropriately protect fiber connectors.





Unit: $\frac{\text{mm}}{\text{in}}$

SCALE 1/8



_C Duplex (SC foot print)
& MTRJ Compatible

GENERAL TOLERANCE OF DIMENSIONS X.XXX ±0.005 X.XX ±0.05 X.X ±0.1	DRAWING	16.DEC.2004	YL
	CHECK	16.DEC.2004	KC
	APPROVAL	16.DEC.2004	GR
SCALE		1/5(A4)	UNIT
DRAWING NO.		LPF181EBKYY_DD_ENB01W	mm
DRAWING CLASSIFICATION		S	SHEET 1 OF 1
ITEM NO.:		LP-F181EBKYY	
DES.:		24-PORT OPTICAL DISTRIBUTION FRAME (ODF) WALL MOUNTED WITHOUT PANELS	

C How to Order:

**LP-F181EBKYY 12 or 24 Port Wall Mounted Optical Distribution Frame (ODF),
Unloaded and Black painted**