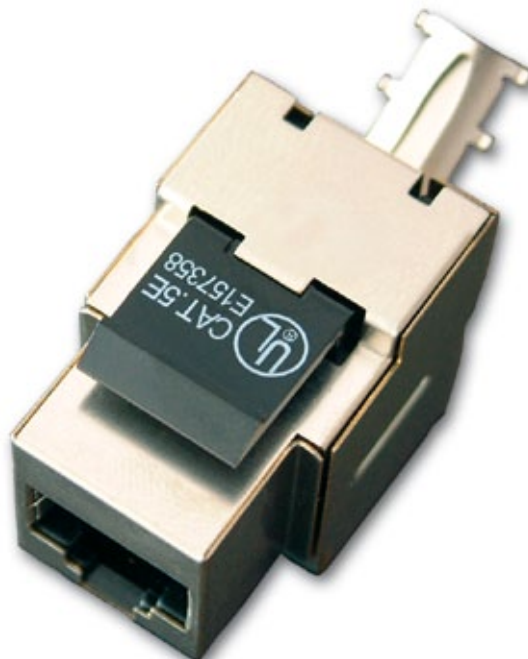


# **LP-8CEPFSNP 8000 Series Reliable 5e® 8P8C RJ45, Keystone® Compatible Fully shielded Modular CAT 5e Jack, 90° IDC.**

LP8CEPFSNP\_SS\_ENB01W

## **Features**

- Fit for CAT 5e general cable distribution system, backward compatible with CAT 5 systems.
- Compliant with ISO/IEC 11801, 2002 CLASS & ANSI/TIA 568-B.2 CAT 5e T568-A and T568-B punching sequences are both compatible. Compliant with IEC 60603-7-5.
- Our standard style allows compatibility with many other brands and systems.
- Fully shielded, rugged.
- Connection type FCC connector for RJ45 patch cords and IDC for 4-pair CAT 5e FTP cables.
- Punch angle is 90°.
- High performance copper alloy contacts and 50 micro-inches of gold plating.
- 750 mating cycles minimum for RJ45.
- 20 mating cycles minimum for IDC.
- Competitively priced.
- Material: ABS UL94V-0.
- Positive latch system.
- FTP capable.
- Compatible with 110 punch-down tools.
- Suitable for 22-26 AWG solid cable.



## **LP-8CEPFSNP 8000 Series Reliable 5e® 8P8C RJ45, Keystone® Compatible Fully shielded Modular CAT 5e Jack, 90° IDC.**

The LP-8CEPFSNP, 8000 series Reliable 5e® 8P8C RJ45, Keystone® compatible Fully shielded modular CAT 5e jacks with 90° IDC are compatible with all the other Reliable 5e components of LanPro, as well as flat and angled faceplates in a perfect way.

LanPro has designed them specifically for high speed and bandwidth in excess of 100 MHz.

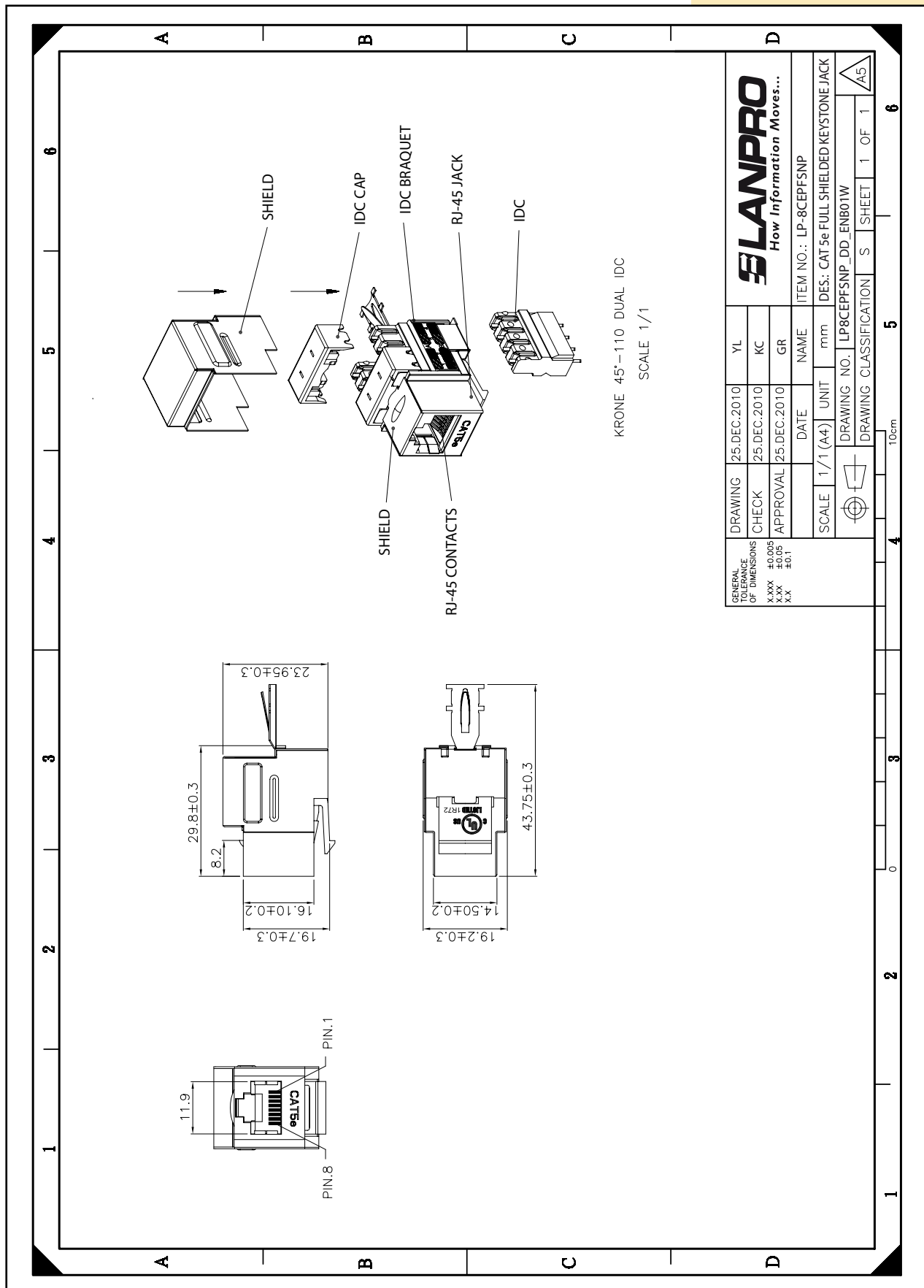
Our LP-8CEPFSNP's allow for universal termination, either T568-A or T568-B, and are punch-down design of 90°, thus offering easiness and flexibility to the installer.

**Note:** All our Jacks are also suitable for CAT 3 cabling system.

## A Specifications

ITEM	DESCRIPTION
<b>Model: LP-8CEPFSNP</b>	Keystone® Jack compatible size, CAT 5e category, FTP type, 90° punching direction, for connecting application of communications ports in working area
Punch directions on package	A quick guide for the punching and connection operation
IDC hats	Fastener hats ensure proper fixation of IDC clips
Standards compliance	ISO/IEC 11801, ANSI/TIA/EIA 568-B.2 CAT 5e for both T568-A and T568-B punching sequences
Connection type	FCC 0° connector for RJ45 patch cord and 90° IDC for 4-pair CAT 5e FTP cables
Category	Fit for CAT 5e general cable distribution system and backward compatible with CAT 5 systems
<b>Material:</b>	
RJ45 jack	Housing: ABS+PC, UL 94V-0, with optional color
	Contact brake: PBT+ fiberglass, UL 94V-0
RJ45 jack contact	Material: Phosphor bronze with nickel plating
	Finish: 50 micro-inches of gold plating on plug contact area
IDC housing	PC + fiberglass, UL 94V-2
	Terminal: Phosphor bronze with tin plating
IDC cap	ABS, UL 94-HB
IDC bracket	ABS, UL 94V-0
IDC entry angle	90°
Shield	Shield bronze with nickel plating
PCB	FR4, UL 94V-0
<b>Performance</b>	
T568-A & T568-B wiring sticker	
Insertion force: 30 N max. (IEC60603-7-5)	
Retention strength: 7.7 Kg between jack and plug	
Operating temperature: -10°C to 60°C (ISO/IEC 11801, ANSI/TIA/EIA 568 B.2)	
Life (mating cycles):	Jack: 750 cycles min. (ISO/IEC 11801, IEC 60503-7-5)
	IDC: 20 cycles minimum, Suitable for AWG 22-26 stranded and solid wire, compatible with both 110 @ Kröner punch down tools
Transmission	CAT 5e compatible transmission performance is in compliance with the ANSI/TIA/EIA 568 B.2 standard
<b>Overall dimensions:</b>	
Width: 19.2 ± 0.3 mm.	
Height: 23.95 ± 0.3 mm.	
Depth: 29.8 ± 0.3 mm.	
<b>Note: The micro-inch (μ in) is a common imperial unit of distance equal to one millionth of an inch, or 25.4 nanometers (nm), or 1 μ in = 0.0254 μm.</b>	

## B Dimensional Drawing



**C** How to Order:

**LP-8CEPFSNP 8000 Series Reliable 5e® 8P8C RJ45, Keystone® compatible Fully shielded Modular CAT 5e Jack with 90° IDC with Nickel plated shield.**