

## LPT-B1 Punch Down Base Tool.

LPTB1\_SS\_ENB01W

### Features

- Allows easy punch down of modular jacks.
- Reduces fatigue.
- Avoids damage to hands, body, or furniture.
- Resists hundreds of Kg of pressure.



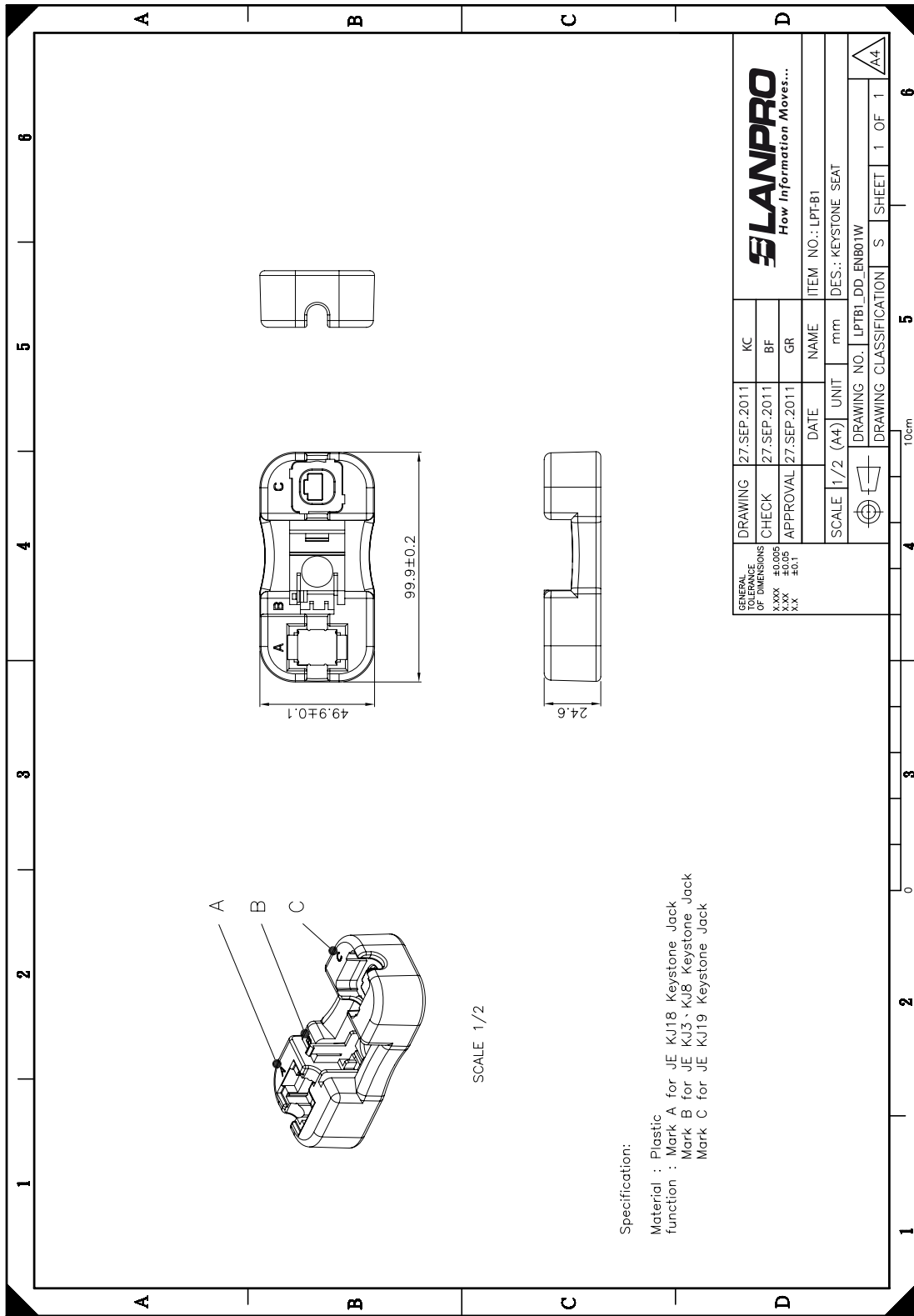
## LPT-B1 Punch Down Base Tool.

The LPT-B1 is a robust and practical tool for the structured cabling technician that allows the easy punch down of LanPro modular jacks. It reduces fatigue, improves accuracy, and avoids damage to the hands, body, or even furniture when punching down a module.

The pressure power of our tool can be as high as 80 Kgs, and this base takes care of that force without problems.



**A Dimensional Drawings**



**B How to Order**

**LPT-B1 Punch Down Base Tool**