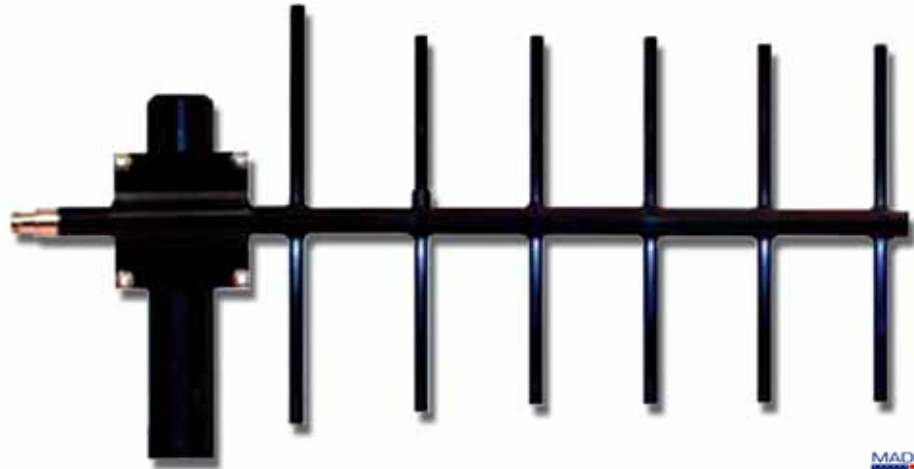


LP-YAGIFFFFGGCHDFW**400 TO 485 MHz 12 dBi Yagi Heavy Duty Fully Welded type Antenna Series.**

LPYAGIFFFFGGCHDFW_PFD_ENB01W

Characteristics

- Two models
400-460MHz band.
425-485MHz band.
- 12 dBi Gain.
- 300 Watt power handling maximum.
- Beamwidth: E 45°, H 55°
- High stability of physical parameters.
- Strong construction made of aluminum and ABS.
- All weather use, UV polyester coated.
- The Balun assembly is filled and sealed with elastomeric thermoplastic.
- Long lasting life.
- Stainless Steel mounting hardware.
- Grounding for lightning protection.
- Female N type Connector.
- Installable by only one person.



LP-YAGIFFFFGGCHDFW
400 TO 485 MHz 12 dBi Yagi Heavy Duty
Fully Welded type Antenna Series.

The heavy Duty Fully Welded Yagi Type Antenna Series for the 400 to 485MHz UHF Band supplied by LanPro are built with aluminum heavy wall tubing and a 3/8" solid elements with the goal of delivering a superb service in extreme environmental conditions.

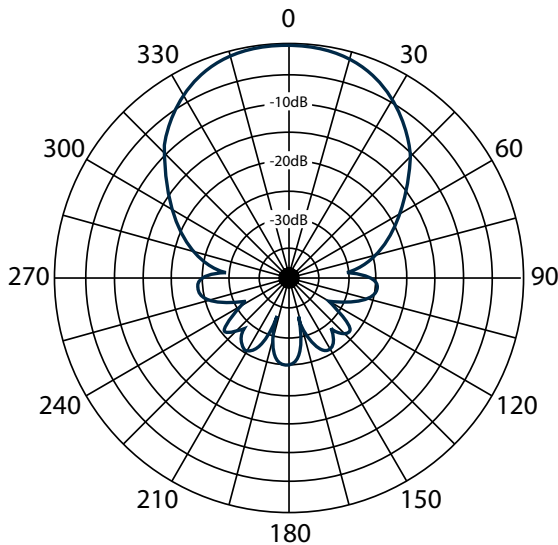
Manufacturing is performed with high precision CNC machinery equipment, giving parameter stability to the antennas in time. The pole mounting hardware is made with stainless steel.

These antenna systems can be used in diverse high performance applications in the 400 to 485 MHz UHF Band.

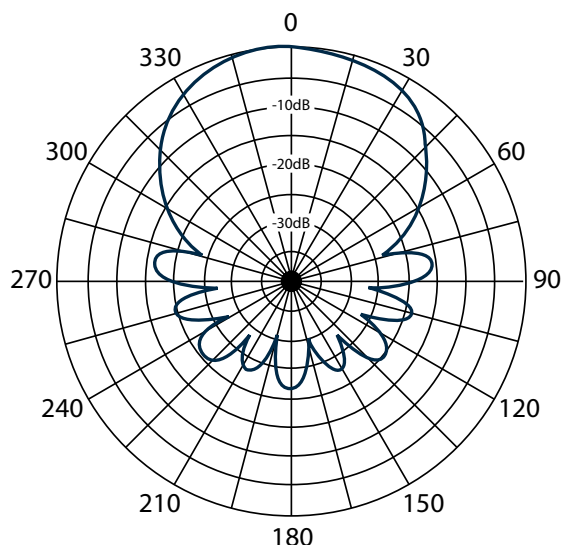
A Technical Specifications

Freq. Range (MHz)	400 to 485 MHz FFFF= 0400 – 400-460 MHz FFFF= 0425 – 425-485 MHz
Impedance	50 Ohm ±10%
VSWR	<1.5:1
Gain	12 dBi
F/B Ratio	20dB
Polarization	Vertical
Power Handling	300 Watt
Beam Width	H: 55° / E: 45°
Termination	C=A: N Female
Operation Temperature	-30°C to +60°C (-22°F to 140°F)
Material	Heavy Wall Aluminum
Finish	UV Inhibited polyester coat
Mount:	2 3/8" mast (Stainless steel hardware) (60.3mm)
Dimensions (L,W)	24" Length, 15" Width (609mm) (381mm)
Flat Plate area	.42ft ² (0,039m ²)
Wind Rating	125 MPH (201.17Km/h)
Wind Load	25.5 lb (11.57Kg)
Weight	<4 Lb (1.81Kg)
Color	Black

Antenna Patterns LP-YAGIFFFF12CHDFW 12 dBi 400 to 485 GHz



PLANE E



PLANE H

B How to Order

- LP-YAGI040012AHDFW 400-460MHz 12 dBi Yagi Heavy Duty Fully Welded type Antenna N Female Connector.
- LP-YAGI042512AHDFW 425-485MHz 12 dBi Yagi Heavy Duty Fully Welded type Antenna N Female Connector.