

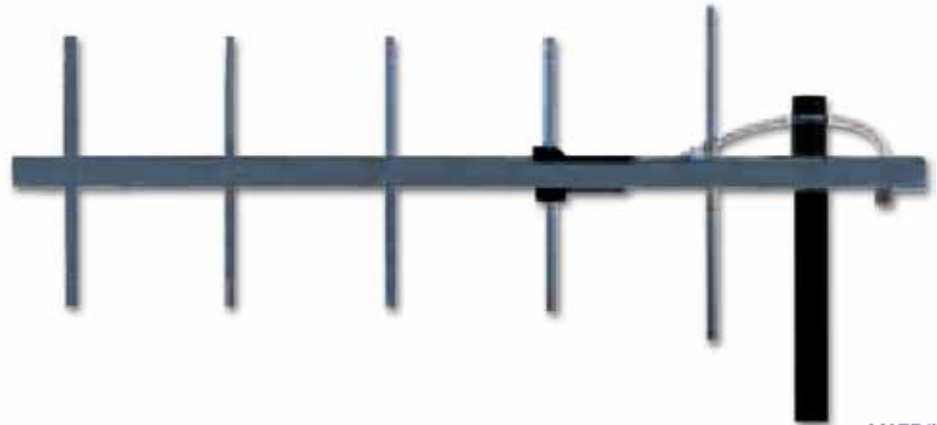
## LP-YAGIOX8YZHD

### 370 TO 512 MHz 8.8 dBi Yagi Heavy Duty type Antenna Series.

LPYAGIOX8YZHD\_PFD\_ENB01W

#### Characteristics

- 370 to 512 MHz UHF Band applications covered by several models.
- 8.8 dBi Gain.
- 300 Watt power handling maximum.
- High stability of physical parameters.
- Strong construction made of aluminum.
- All weather use, UV polyester coated.
- The Balun assembly is filled and sealed with elastomeric thermoplastic.
- Long lasting life.
- Stainless Steel mounting hardware.
- Grounding for lightning protection.
- Termination options:  
A: N-Female.  
B: Direct TNC to the Balun.  
C: Direct N Connection to the Balun.



## LP-YAGIOX8YZHD

### 370 TO 512 MHz 8.8 dBi

### Yagi Heavy Duty type Antenna Series.

The heavy Duty Yagi Type Antenna Series for the 370 to 512 MHz UHF Band supplied by LanPro are built with a one(1) inch anodized aluminum U-Channel and 3/8" solid elements with the goal of delivering a superb service in extreme environmental conditions.

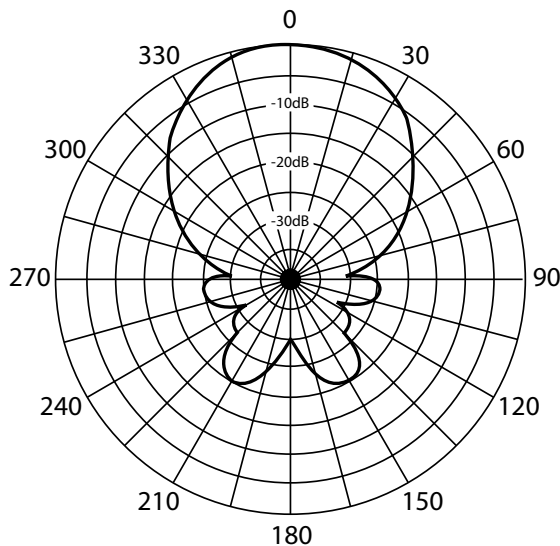
Manufacturing is performed with high precision CNC machinery equipment, giving parameter stability to the antennas in time. The pole mounting hardware is made with stainless steel.

These antenna systems can be used in diverse high performance applications in the 370 to 512 MHz UHF Band.

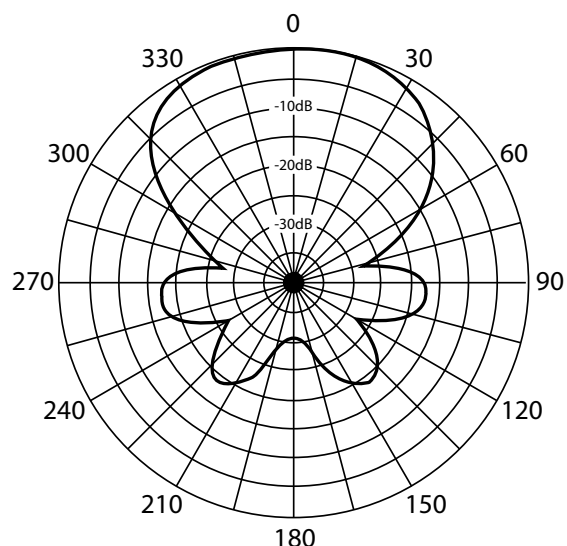
**A Technical Specifications**

Freq. Range (MHz)	370 to 512 MHz X=3, Y=1: 370-390MHz X=4, Y=2: 406-430MHz X=4, Y=3: 430-450MHz X=4, Y=4: 450-470MHz X=4, Y=5: 470-490MHz X=4, Y=6: 490-512 MHz
Impedance	50 Ohm ±10%
VSWR	<2:1
Gain	12 dBi
F/B Ratio	18dB
Front to Back ratio(dB)	≥18
V.S.W.R	<1.5
Nominal Impedance (Ω)	50
Polarization	Vertical
Power Handling	300 Watt
Beam Width	H: 60° / E: 55°
Termination	Z=A: N Female Z=B: Direct TNC to the Balun Z=C: Direct N connection to the Balun
Operation Temperature	-30°C to +60°C
Material	1" Aluminum U channel Boom
Finish	UV Inhibited polyester coat
Mount:	2 3/8" mast (Stainless steel hardware)
Dimensions (L)	32"
Flat Plate area	.31ft2
Wind Rating	125 MPH
Wind Load	18.7 lb
Weight	<4 Lb
Color	Silver gray

**Antenna Patterns LP-YAGI0X8YZHD 8.8 dBi 370 to 512 GHz**



**PLANE E**



**PLANE H**

**B** How to Order

LP-YAGI0381AHD	370-390 MHz 8.8 dBi Yagi Heavy Duty type Antenna N Female Connector
LP-YAGI0482AHD	406-430 MHz 8.8 dBi Yagi Heavy Duty type Antenna N Female Connector
LP-YAGI0483AHD	430-450 MHz 8.8 dBi Yagi Heavy Duty type Antenna N Female Connector
LP-YAGI0484AHD	450-470 MHz 8.8 dBi Yagi Heavy Duty type Antenna N Female Connector
LP-YAGI0485AHD	470-490 MHz 8.8 dBi Yagi Heavy Duty type Antenna N Female Connector
LP-YAGI0486AHD	490-512 MHz 8.8 dBi Yagi Heavy Duty type Antenna N Female Connector
LP-YAGI0381BHD	370-390 MHz 8.8 dBi Yagi Heavy Duty type Antenna Direct TNC to the Balun
LP-YAGI0482BHD	406-430 MHz 8.8 dBi Yagi Heavy Duty type Antenna Direct TNC to the Balun
LP-YAGI0483BHD	430-450 MHz 8.8 dBi Yagi Heavy Duty type Antenna Direct TNC to the Balun
LP-YAGI0484BHD	450-470 MHz 8.8 dBi Yagi Heavy Duty type Antenna Direct TNC to the Balun
LP-YAGI0485BHD	470-490 MHz 8.8 dBi Yagi Heavy Duty type Antenna Direct TNC to the Balun
LP-YAGI0486BHD	490-512 MHz 8.8 dBi Yagi Heavy Duty type Antenna Direct TNC to the Balun
LP-YAGI0381CHD	370-390 MHz 8.8 dBi Yagi Heavy Duty type Antenna Direct N connection to the Balun
LP-YAGI0482CHD	406-430 MHz 8.8 dBi Yagi Heavy Duty type Antenna Direct N connection to the Balun
LP-YAGI0483CHD	430-450 MHz 8.8 dBi Yagi Heavy Duty type Antenna Direct N connection to the Balun
LP-YAGI0484CHD	450-470 MHz 8.8 dBi Yagi Heavy Duty type Antenna Direct N connection to the Balun
LP-YAGI0485CHD	470-490 MHz 8.8 dBi Yagi Heavy Duty type Antenna Direct N connection to the Balun
LP-YAGI0486CHD	490-512 MHz 8.8 dBi Yagi Heavy Duty type Antenna Direct N connection to the Balun