

**123 Manual for the assembly of the LP-SEC58XX series of sector antennas.**

LPSEC58XX\_M123\_ENB01W

**123 Manual for the assembly of  
the LP-SEC58XX series of sector  
antennas.**

**1**

Please check the contents of the package (As shown in figures 1). It should include: One (1) Sector Antenna, one (1) plastic bag with mast clamps and hardware , one(1) antenna base and one(1) multi-use base. One (1) swivel arm and a bag of screws and washers for the arm. This kit can vary depending on the model of the antenna, we have shown the multi-use base (For Wall and Mast).

**Figure 1****2**

Proceed to unscrew the nuts and washers from the back of the antenna body as show in figure 2.

**Figures 2**

**3**

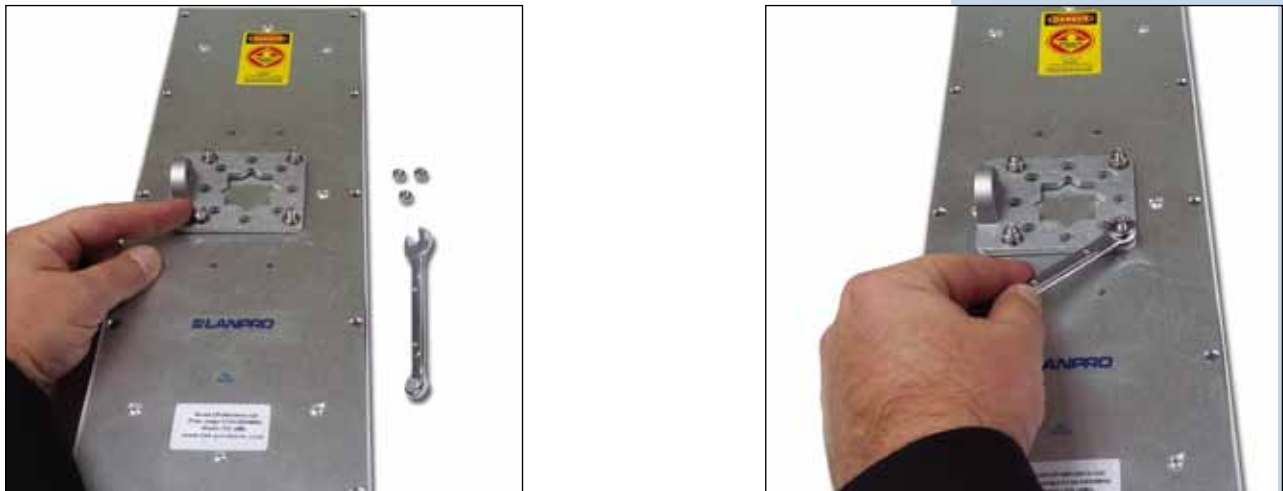
Proceed to assemble the base on the antenna by placing it in a position suited for the application, as shown in figures 3.



**Figures 3**

**4**

Place the screws with the washers and the proceed to tighten them with care, do not overtight them as shown in figures 4



**Figures 4**

**5**

Now add the swivel arm in place over the base of the antenna as shown in figures 5.



**Figures 5**

**6**

Locate the mast clamps shown in figure 6.



**Figure 6**

**7**

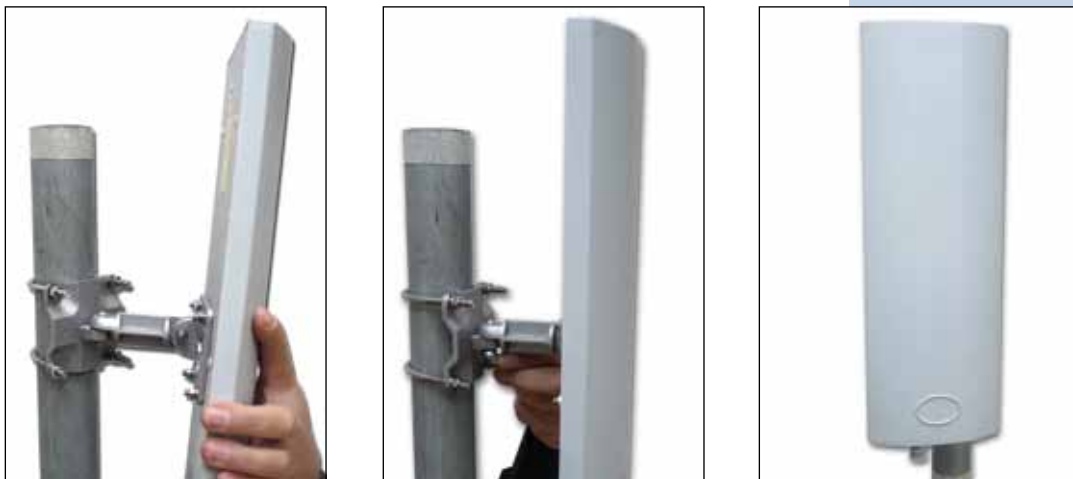
Proceed to fix the antenna mast base to the mast with the clamps as shown in figures 7.



**Figures 7**

**8**

Proceed to add the Sector antenna body by fixing the swivel arm to the mast base with the screw as shown in figures 8. Finish the installation by adjusting the antenna orientation as the application requires.



**Figures 8**