

LP-OMNIMOBILE0906 900 to 930 MHz 6 dBi Heavy Duty Flexible Mobile OMNI type Antenna.

LPOMNIMOBILE0906_SS_ENB01W

Characteristics

- 900 to 930 MHz UHF Band applications.
- 6 dBi gain in a wideband design.
- Heavy duty service.
- Power handling capacity of 200 watts.
- Stylish and Durable: These antennas are manufactured using the finest corrosion resistant materials and finishes available. They are available in triple plated chrome and black finishes.
- Heavy duty Magnetic Mount with Mylar protective film.
- High stability of physical parameters.
- Lightweight and durable.
- 12 feet of RG58U coax and N-Female connector.
- Simple to install.



LP-OMNIMOBILE0906 900 TO 930 MHz 6 dBi Heavy Duty Flexible Mobile OMNI type Antenna.

These Heavy Duty Omni Mobile Antennas with Magnetic bases for the 900 to 930 MHz UHF Band supplied by LanPro are built with a strong construction design, with the radiating elements made of copper & copper alloy.

Manufacturing is performed with high precision CNC machinery equipment, giving parameter stability to the antennas in time.

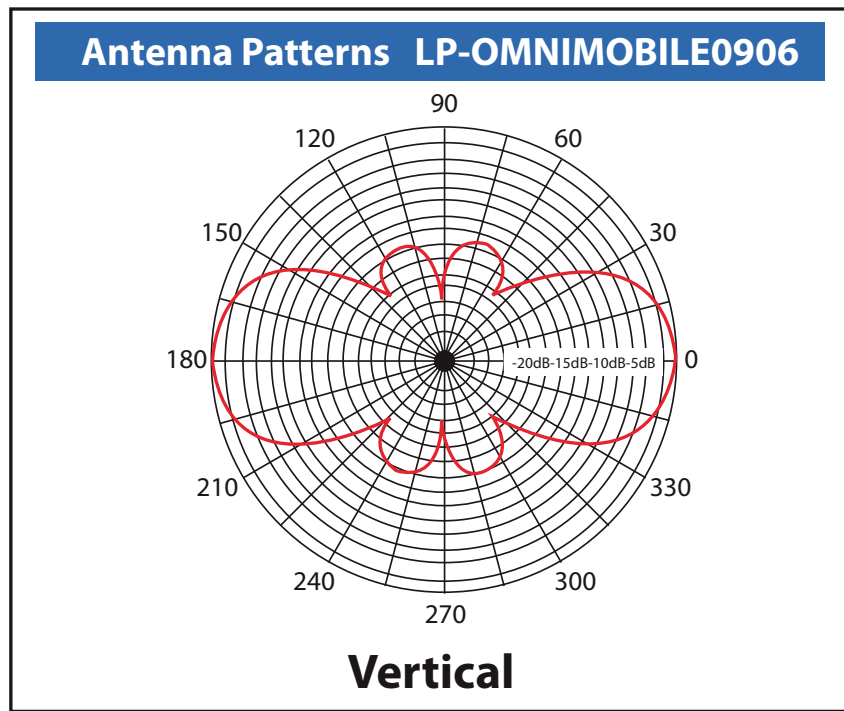
These antenna systems can be used in diverse high performance applications in the 900 to 930 MHz UHF band.

It features a powerful magnetic base with a protective mylar to prevent damage to any mounting surface. Comes supplied with 12 feet of RG58U coax and PL259 connector.



A Specifications

Frequency range	900 to 930 MHz
Impedance	50 Ohm \pm 10%
VSWR	\leq 2 : 1
Gain	6 dBi
Polarization	Vertical
Power Handling	200 Watt
Connector	N-Female with 12 feet RG58U coaxial cable
Operation Temperature	-30°C to +60°C
Radiator	Stainless Steel Black Painted
Mounting Sleeve	Strong Magnetic Base with Mylar® contact surface that protects surface to be used for mounting.



B How to Order

LP-OMNIMOBILE0906 900 to 930 MHz 6 dBi Heavy Duty Flexible Mobile OMNI type Antenna.