

123 Manual for using the WPS function in the LP-N24U wireless-N USB adapter in client mode.

LPN24U_M123_ENE01W



**123 Manual for using
the WPS function in the
LP-N24U wireless-N
USB adapter in client.
mode.**



The WPS function permits you to make a secure connection between one (1) router (LP-N24 or LP-1522 or LP-1520ai) and one or more client devices like the LP-N24U and/or LP-N24P by a simple and secure way, and without inputting any key. It is generated automatically by the Router and is transferred and configured in the negotiation process. This is a very simple way to configure the wireless network, with high security and without the need of too much knowledge. It is performed in a few steps.

There are two modalities called first: **By Push Button** and second: **By Pin**, they differ in that in the first case there is no involvement of the user and in the second, there is user intervention.

The process can be explained in the following manner:

By Push Button: in this case the user pushes the WPS push-button in the Router (LP-N24 o LP-1522) and will have up to 2 minutes for the connection of a wireless client. He must repeat these steps for each client he wishes to connect to but there is some risk that somebody pushes the client push button and become part of this network).

By Pin: in this modality, the user inputs the PIN generated by the Router (LP-N24 o LP-1522 o LP-1520ai) in the Client that is to be connected. In this process there is no risk that someone gets connected without permission because in order to do so, he must know the PIN generated in the moment.

Previous requisites for the execution of this 123 manual:

- Execute the 123 Manual Installation Guide of the LP-N24, if it is not already installed.
- Execute the 123 Manual for the Installation of the LP-N24U.

The LP-N24U has a push-button clearly marked WPS in its bottom which you may want to push in order to perform the connection by push button. Please take a look at figure 1, you can also activate the WPS functionality by software.



Figure 1

Connection of a LP-N24U client to a LP-N24 Router with WPS in mode PBC.

- 1 Connect your LP-N24 Router LP-N24 as per the 123 Manual Installation Guide included with the equipment package or by downloading it from the web page: www.lanpro.com
- 2 Once turned on and stabilized (Power LED not blinking, and SYS LED blinking and WLAN Led not blinking) as in figure 2, proceed to push the WPS Push button in the back of the LP-N24 for one(1) second as shown in figure 3, you will see the WPS LED begin blinking, this indicates you have two(2) minutes for performing the association of a client as shown in figure 4.



Figure 2



Figure 3



Figure 4

- 3 Push now the WPS push-button in the LP-N24U as shown in figure 5.



Figure 5

4 Wait until the devices negotiate, this might take some time depending on the wireless link quality between them. In case it fails, please repeat steps 3 and 4 and if there is no successful negotiation, go to step 5.

5 Select the Profile option in the LP-N24U application as shown in figure 6.

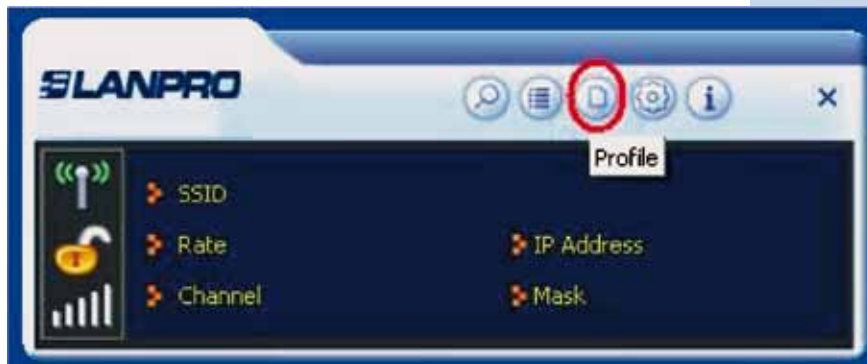


Figure 6

6 Select: **Add WPS Profile** as shown in figure 7.

7 Select: **Next**, as shown in figure 8.



Figure 7



Figure 8

8 Push the WPS push-button in the LP-N24 and after the WPS LED blinks, select: **Start PBC** in the application of the LP-N24U as shown in figure 9.



Figure 9

9 A process of search and association begins, as shown in figures 10 and 11.



Figure 10



Figure 11

10 The connection can be confirmed as shown in figure 12. You must follow all the above mentioned steps for each wireless client.



Figure 12

Connection of an LP-N24U client to an LP-N24 router with WPS in "By PIN" mode.

- 1 Connect your LP-N24 router as per the 123 Manual Quick Installation included in the package or by downloading it from the web page: www.lanpro.com
- 2 In the LP-N24 configuration, select: **WLAN Settings**, select: **WPS Settings**, then select: **PIN** as shown in figure 13.
- 3 At the same time, please open the LP-N24U application in the client equipment and select: **Profiles**, as shown in figure 14.



Figure 13



Figure 14

- 4 Select: **Add WPS Profile** as shown in figure 15.
- 5 Select the corresponding AP in the WPS AP List, select: **PIN/Numeric code** method and then: **Next** as shown in figure 16.



Figure 15



Figure 16

- 6 Take note of the PIN delivered, this value must be placed in the PIN field in the LP-N24(See figure 13), then select: **Next** right arrow, as shown in figure 17. In this example, we use the configuration Mode: **Enrollee**. In case of using mode: **Registrar**, the reverse is due: The PIN code generated by the AP shown in figure 17a must be placed in the Pin Code field in the figure 17b of the LP-N24U software.



Figure 17



Figure 17.a



Figure 17.b

- In the LP-N24 window shown in figure 18 place the PIN delivered in the last step in the PIN field and select: **Save**.



Figure 18

- Select: **Start PIN** and wait for the negotiation and connection to be done, as shown in figure 19,20 and 21.



Figure 19



Figure 20



Figure 21