

123 Manual for the installation of the LP-N24U USB Wireless Adapter in AP + Client Mode

LPN24U_M123_ENC01W

**123 Manual for the
installation of the
LP-N24U USB Wireless
Adapter
in AP + Client Mode.**

- 1 In order to begin, please use the corresponding CD or download the set of drivers from the web page **www.lanpro.com** and then unzip the files. Please go to the following link.
- 2 Proceed to plug the LP-N24U in an available USB port of your PC or Portable Computer as shown in figure 1.



Figure 1

- 3 A window of the Wizard will pop-up indicating that a new device was found, then select: **Cancel** as shown in figure 2.

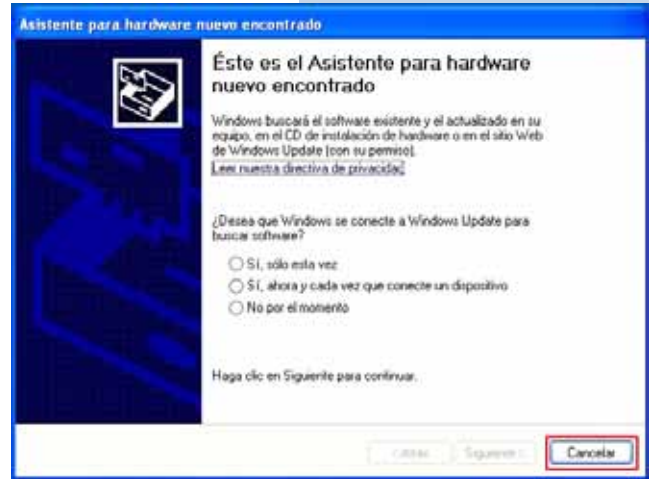


Figure 2

- 4 Proceed to insert the installation CD in the CD Drive of your PC, it will execute automatically. If it doesn't, please select: My PC followed by the drive unit, where the software is located, find the directory and the file named LANPRO as shown in figure 3.



Figure 3

- 5 Wait for the welcome window to pop-up and select: **RUN** as shown in figure 4.



Figure 4

- 6 Accept the software agreement, then select: **Next** (Figure 5), then chose the installation mode, then hit: **Next** (Figure 6), it is recommended to use the controller and application mode. Select then: **Install** in order to proceed with the installation (Figure 7), please take in mind that we highly recommend to disable any other wireless adaptor card software already installed in order to avoid conflict of the applications.

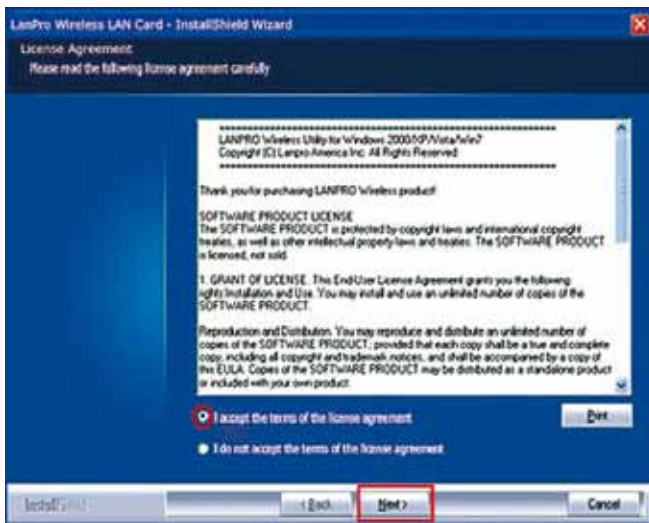


Figure 5

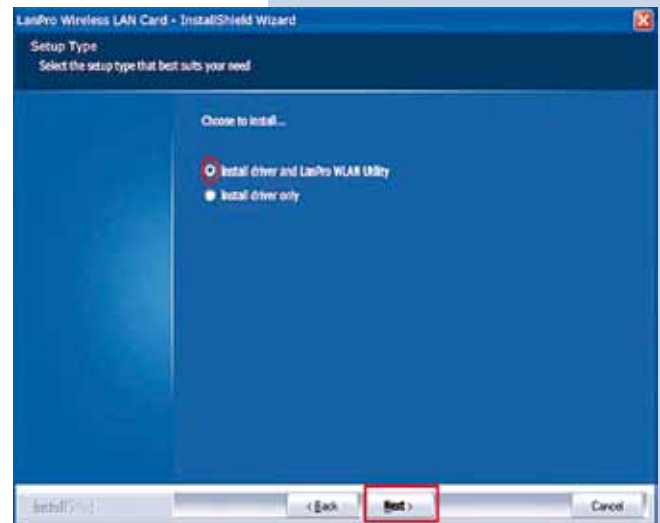


Figure 6

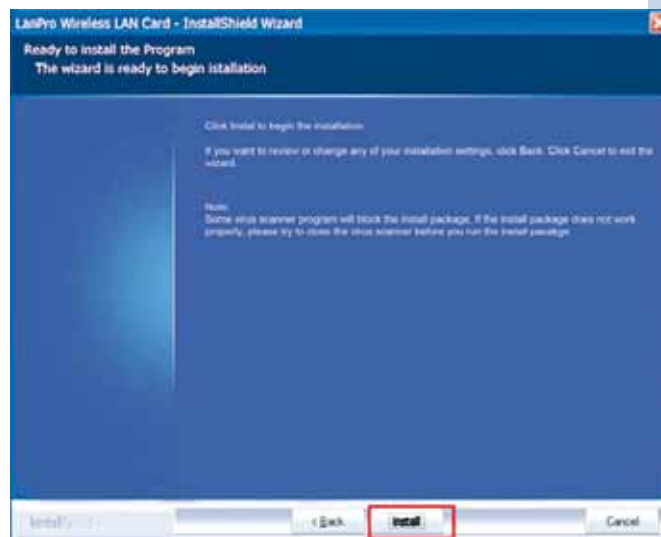


Figure 7

- 7 The operating system may ask you to confirm the driver installation during the process of installation. Select now: Continue as many times as required by the system.
- 8 Select: **Finish** to finish the installation (Figure 8).

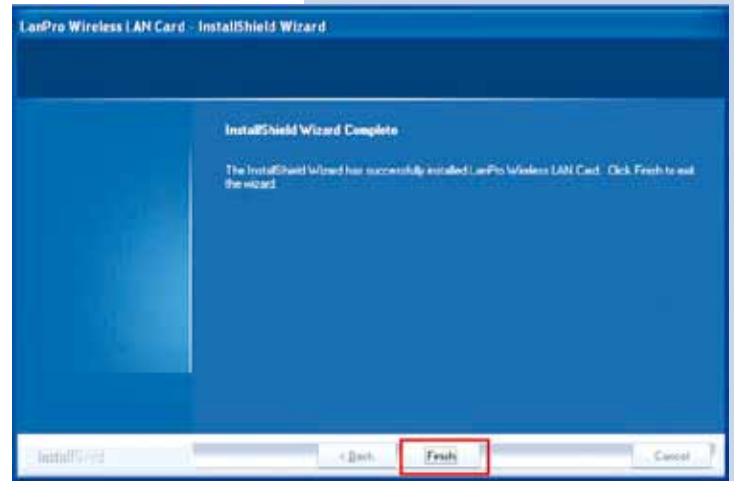


Figure 8

- 9 Once the installation finishes, a direct access Icon to the application appears (Figure 9), an Access to the application will be located also on the Task Bar (Figure 10) and a dialogue window will open (Figure 11).



Figure 9



Figure 10



Figure 11

- 10 Locate the Icon in the lower part of your Task Bar and by selecting it with the right button of your mouse a window pops-up shown in figure 12. In it, select with the left button of the mouse: **Switch to AP Mode** for Windows XP and Windows Vista, for Windows 7, select: **Switch to STA + AP** as shown in figure 13



Figure 12

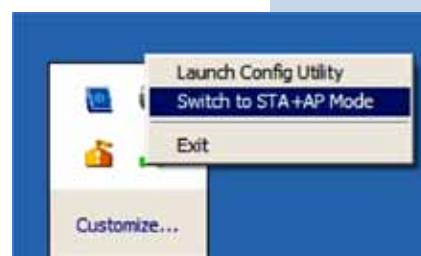


Figure 13

- 11 The application will start the ICS configuration of your Operating System (Figure 14), wait until it has finished.

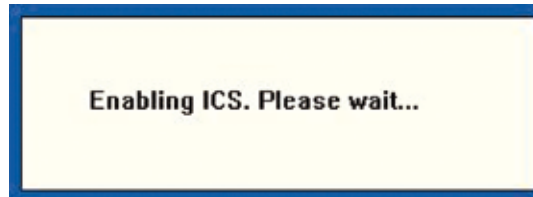


Figure 14

- 12 **For users of Windows XP or Windows Vista:** In case your equipment has this network device only, a warning will be presented that reminds you that two or more devices are needed to use the ICS service (Internet Connection Sharing). Select: **OK** (figure 15), this refers to the possibility of sharing the Internet service. If there is no other network equipment, the only functionality available is that other equipment will connect to it.

If you have two (2) network equipment, ICS will assume that the additional network device is the Internet connection and will share it.

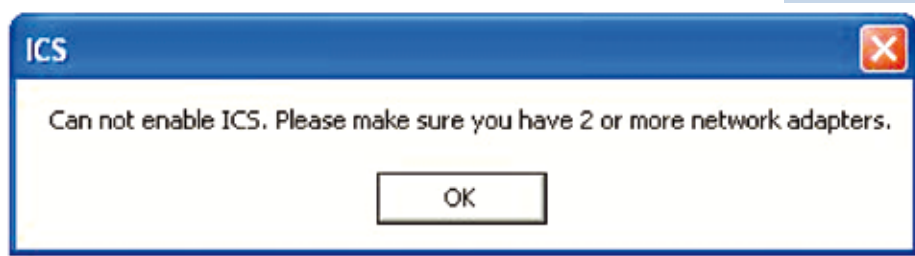


Figure 15

- 13 **For users of Windows 7:** The operating system is capable of handling the same device for both functions simultaneously, AP and Client, and using the Client as a connection to Internet. In case this is the only device, it will ask that you to input the SSID and the ciphering and encryption key, then select: **OK**, as shown in figure 16.

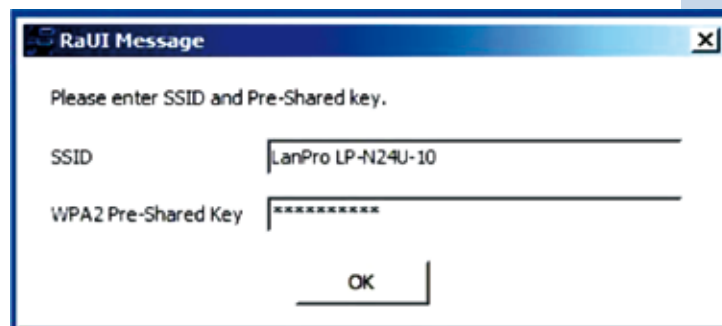


Figure 16

- 14 En case there are more than two(2) network connections, (For Windows 7, two(2) or more network connections), ICS will ask you which of the devices is used for the Internet Service, select it and then: **Ok** as shown in figure 17.



Figura 17

- 15 Next, a window will pop-up, as shown in figure 18, corresponding to the configuration.



Figure 18

- 16 Select option: **Configuration**  and select: **Next**, as shown in figure 19.

- 17 Select the desired channel and select: **Next** as shown in figure 20.

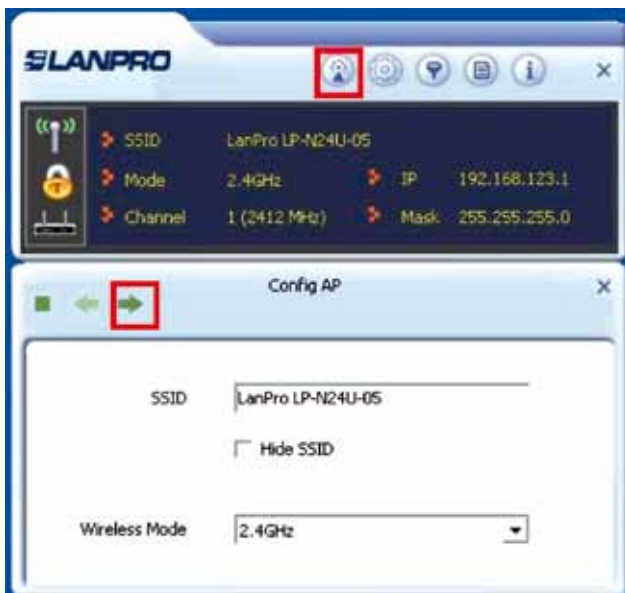


Figure 19



Figure 20

- 18 Select the required Authentication and Encryption Modes, it is recommended to use the default ones as they are compatible with most of the devices. Then select: Next as shown the window of figure 21.
Note: for PCs with Windows 7, WPA2 and AES encryption are the only modes that are possible, please see the note in page 8.



Figure 21

- 19 Input the authentication and encryption key, it is the key used by the clients that will connect to this AP, the format of the Key will depend on the authentication type selected in the above mentioned section, select: **Next** as shown in figure 22.



Figure 22

- 20 The wireless clients can now connect to the LP-N24U, as it is acting as an AP, it is important to mention that this AP is located in network segment: 192.168.123.x

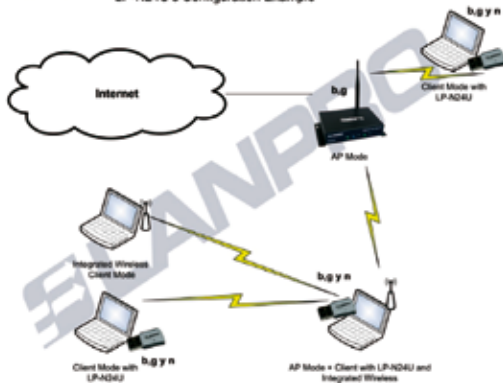
Note for users with PC's loaded with Windows 7
All AP Mode configuration options are shown in one window
only shown in figure 23



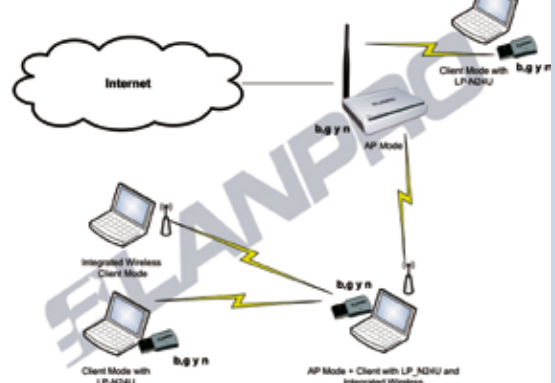
Figure 23

EXAMPLE DIAGRAMS

SLANPRO LP-N24U's Configuration Example



SLANPRO LP-N24U's Configuration Example



SLANPRO LP-N24U's Configuration Example

