

123 Manual LP-C290N 300 Mbps Wi-Fi Access Point (AP). Configuration as a Client

LPC290N_M123_ENC01W



LP-C290N 123 Manual LP-C290N 300 Mbps Wi-Fi Access Point (AP). Configuration as a Client

1

Please check the package contents, it must contain the components shown in **figure 1**

- a. One(1) model: LP-C290N AP equipment
- b. One (1) 110VAC-12VDC power adaptor
- c. One (1) Patch-Cord
- d. Installation Guide



Figure 1



2

This manual explains the configuration steps for Client Mode, (inside the blue frame). It is tied to an LP-C290N working as an AP connected to an ADSL Modem. For other operation modes, please consult the other 1 2 3 Manuals available for download at www.lanpro.com. Please see **figure 2** and remember that in this configuration, the existence of a WLAN is mandatory, as shown in figure 2 inside the red frame.

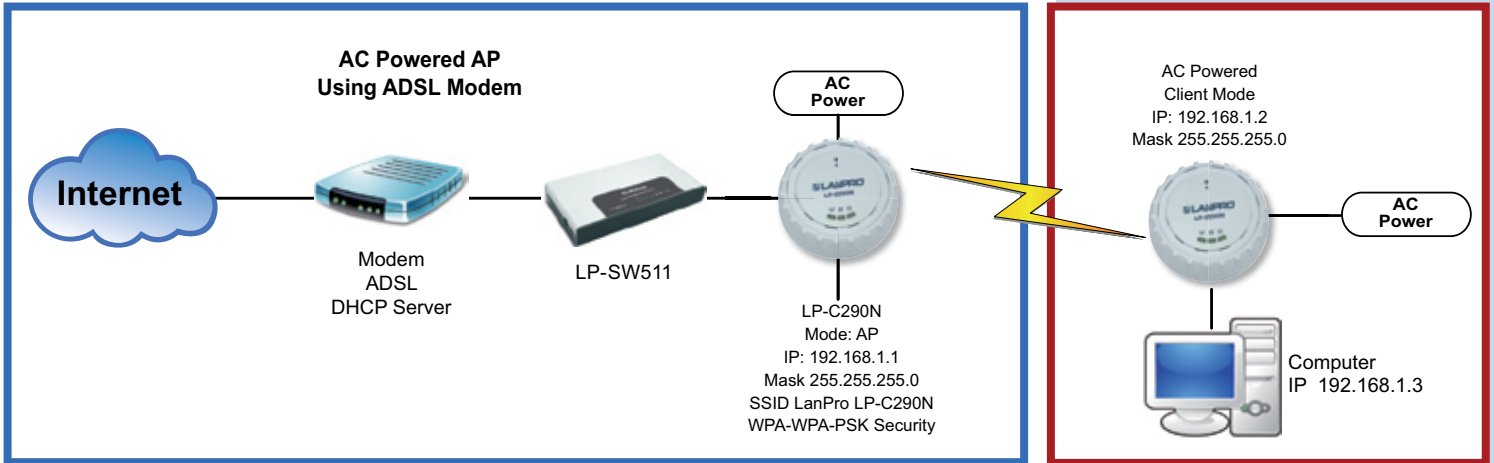


Figure 2

3

For fixation of the equipment on a wall or ceiling, proceed to remove the base by turning it as shown in **figure 3**.

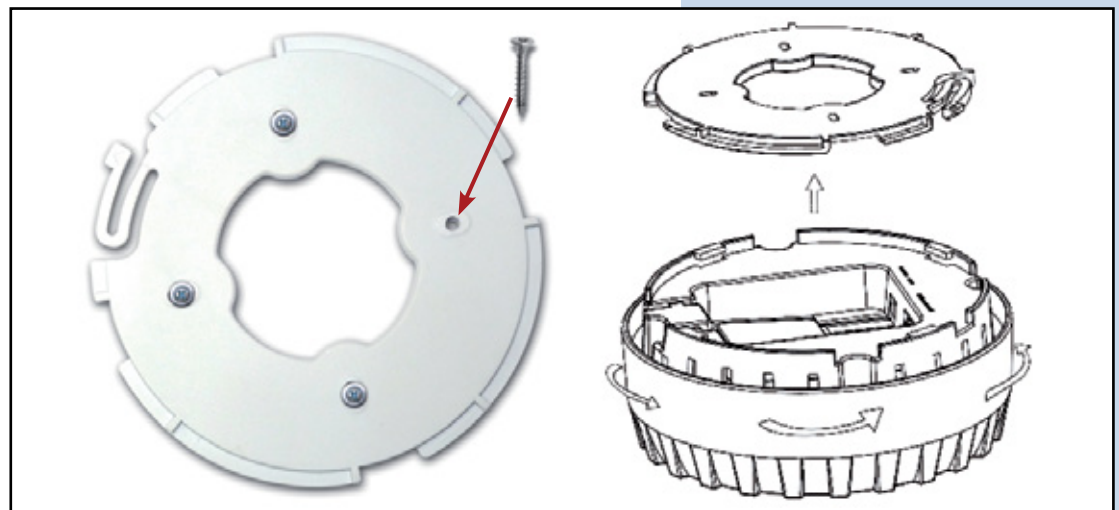
Figure 3



4

Fix it on the selected place as shown in **figure 4**.

Figure 4



5

You must decide how to power the el LP-C290N, be it from the AC Mains with the furnished power adaptor or through the Ethernet cable by using a PoE PSD device.

NOTE: Please be careful and avoid powering the device through both ways at the same time as you will provoke an internal short circuit that can damage the equipment.

6

Remember to have an AC mains outlet near the device when powering it with the AC/DC adaptor, or by providing a PSD device complying with the IEEE 802.3 af standard at the other end of the Ethernet cable supplying data+power.

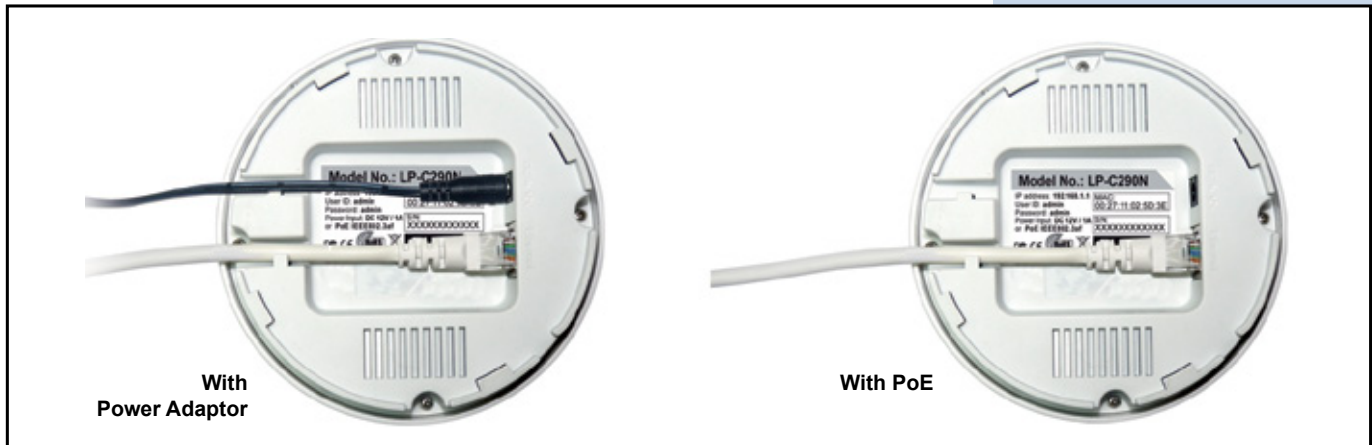


Figure 5

7

Proceed to connect it and to fix the base as shown in point **Number 4**.

8

Once connected, please proceed to its configuration.

9

Connect a PC or Laptop to the LAN where the LP-C290N is located, as shown in **figure 6**



Figure 6

10

Now go to your Network Card properties, as shown in **figure 7**.

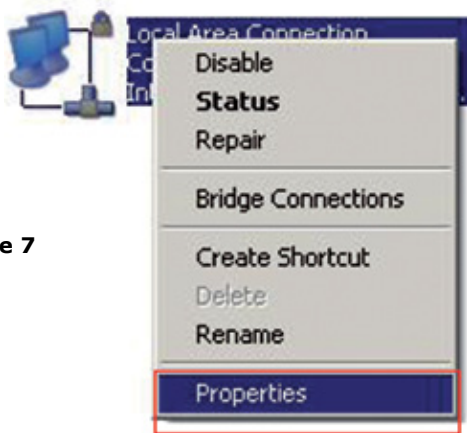


Figure 7

11

Select the TCP/IP protocol and properties again as shown in **figure 8**.

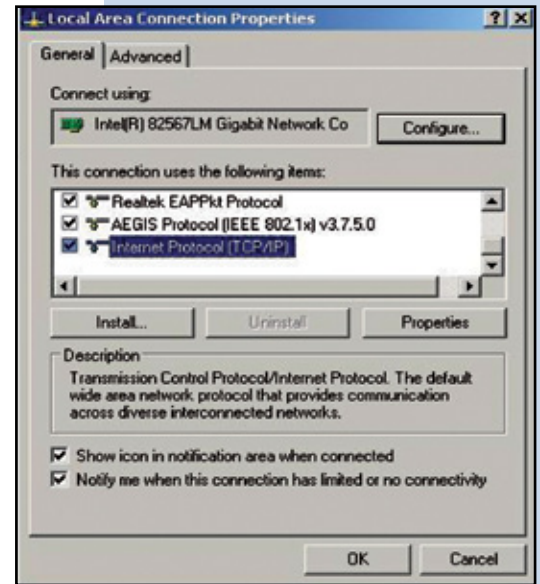


Figure 8

12

Assign an IP address inside the LP-C290N segment to your Network Card. The LP-C290N has a default IP address of 192.168.1.1, hence, we will use a different one in our network card like: 192.168.1.3; please see **Figure 2 in the Blue frame**, and remember that IP addresses cannot be repeated in your network. Proceed to select OK twice as shown in **figure 9**.

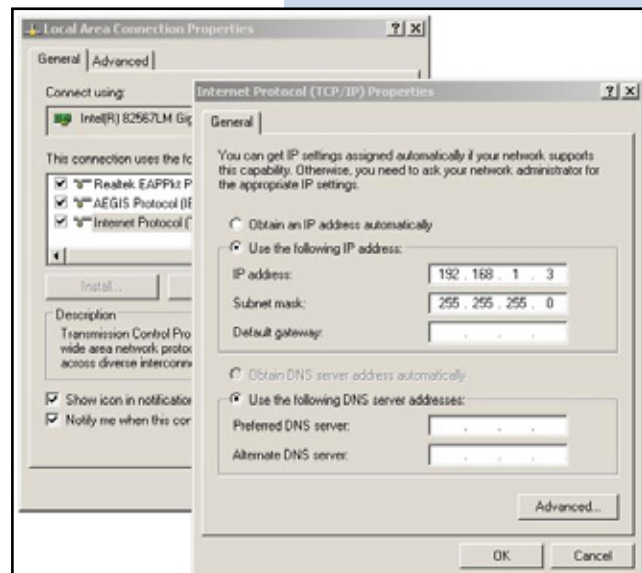


Figure 9

13

Proceed to open your preferred browser and with the LP-C290N IP address. In this case, use the default address 192.168.1.1, as shown in **Figure 10**.



Figure 10

14

The LP-C290N, will prompt for your credentials for accessing your configuration, in this case use the default ones: User name: **admin** y Password: **admin**, as shown in **figure 11**.



Figure 11

15

Proceed to validate the administration IP of your LP-C290N in your diagram, remember that in this case the LP-C290N is a client of a network, and a router or ADSL modem should be there, responsible for delivering IP addresses to the connecting Clients. In this example, the Client will have the following address: 192.168.1.3 as shown in figure 11, remember that your network card has the following address 192.168.1.3, **please see the blue frame in Figure 2**. Select the **Network / IP Address (UPNP)** option; once the IP has been changed, select **Apply**, your equipment will reset and must be accessed from now on with the new address. In this case 192.168.1.2, because it is the second equipment. Please see **Figure 12**.

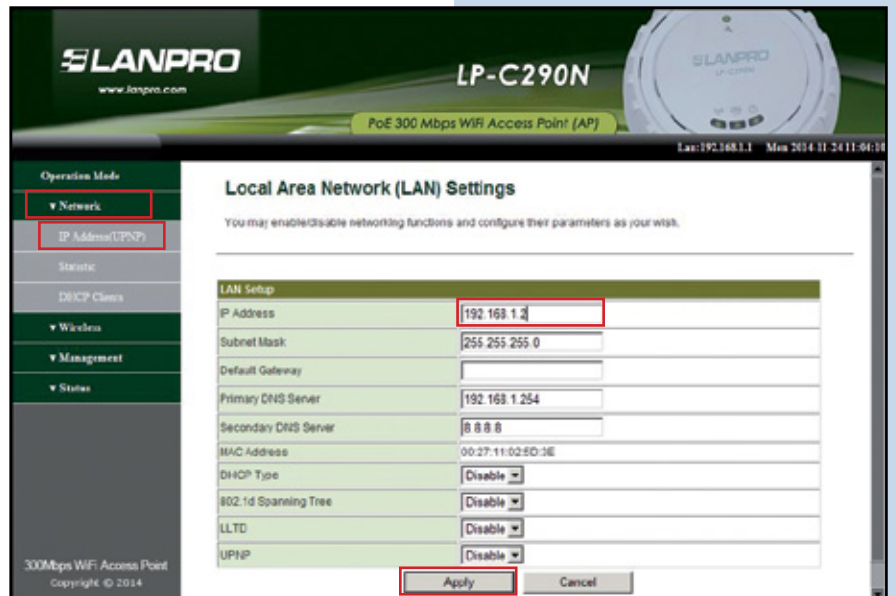


Figure 12

16

Proceed to open your preferred browser and input the new address 192.168.1.2, as shown in **figure 13**.

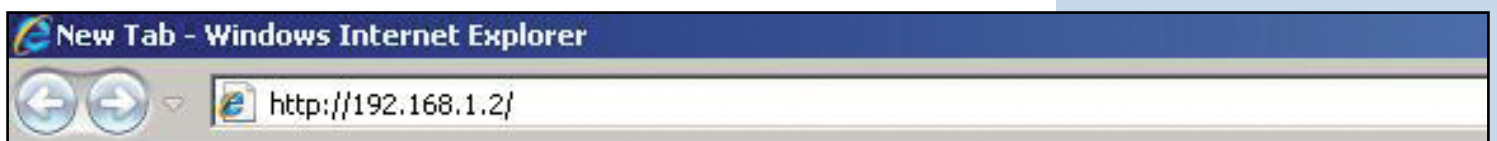


Figure 13

17

The LP-C290N, will prompt for your credentials for accessing your configuration, in this case use the default ones: User name: **admin** y Password: **admin**, as shown in **figure 13**.



Figure 14

18

Proceed to change the operation mode to Client by selecting **Operation Mode/AP Client/Apply**, as shown in **figure 15**.

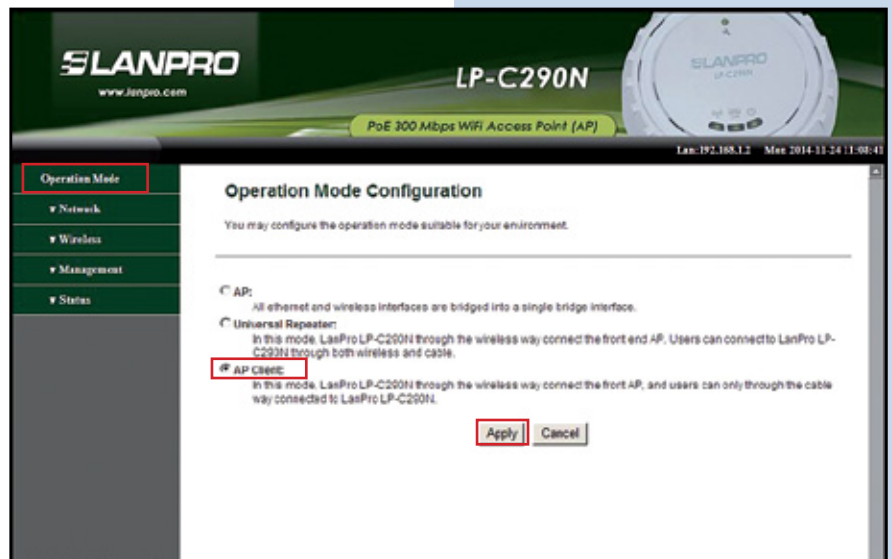


Figure 15

19

The equipment will show the counter while the reset takes place as shown in **figure 16**.

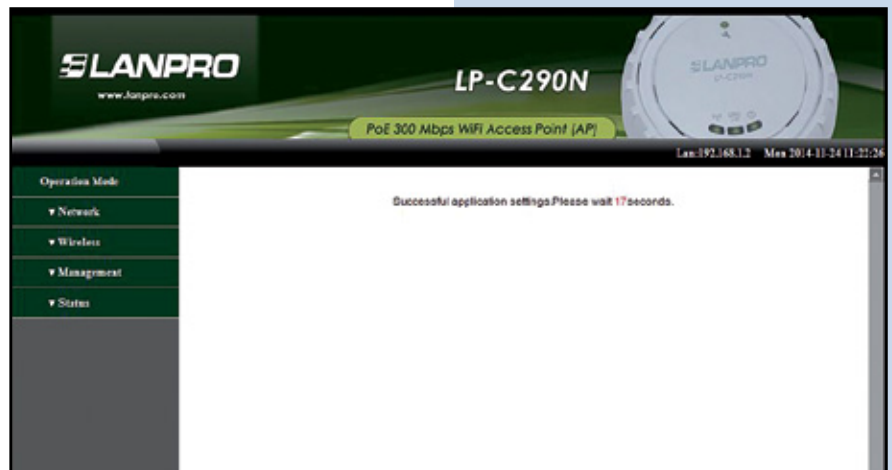
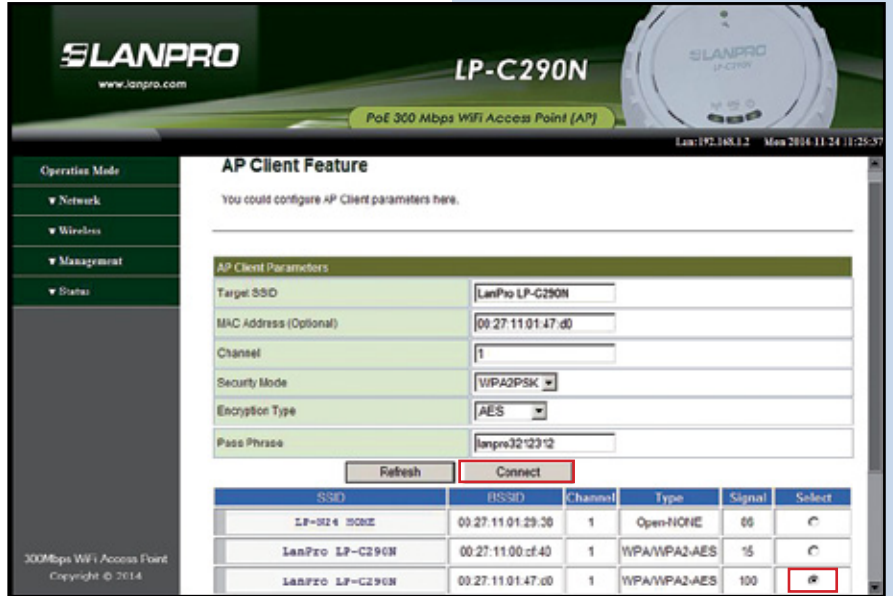


Figura 16

20

Proceed to select the network to connect to, in this example **LanPro LP-C290N**, input the password in the field named **Pass Phrase** y select **Connect**, as shown in **figure 17**.

Figure 17



21

The equipment will show the counter while the reset takes place as shown in **figure 18**.

Figure 18



22

The status window in which you will be able to confirm that you are connected pops-up, as shown in the red frame of **figure 19**.

Figure 19



23

Proceed to change the password of the LP-C290N, we highly recommend this. This password will let you access as an administrator, to perform this, please select: **Management/Language (Time)** and input it in the **Password** field and immediately select **Apply**, as shown in **figure 20**.

Figure 20

