

# 123 Manual LP-C290N 300 Mbps Wi-Fi Access Point (AP). Configuration as an Access Point (AP).

LPC290N\_M123\_ENB01W



## 123 Manual LP-C290N 300 Mbps Wi-Fi Access Point (AP). Configuration as an Access Point (AP).

### 1

Please check the package contents, it must contain the components shown in **figure 1**

- a. One (1) model: LP-C290N AP equipment
- b. One (1) 110VAC-12VDC power adaptor
- c. One (1) Patch-Cord
- d. Installation Guide

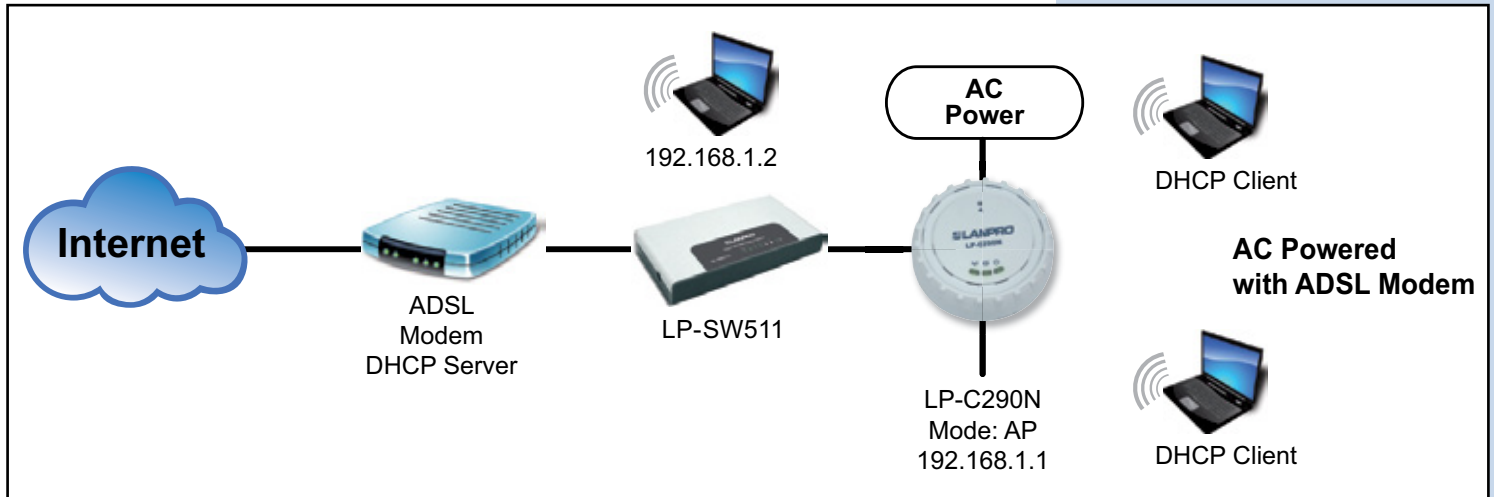


Figure 1



**2**

This manual explains the configuration of the LP-C290N as an AP with an ADSL modem as shown in figure 2, for other operation modes, please consult the other 1 2 3 Manuals available for download at [www.lanpro.com](http://www.lanpro.com).



**Figure 2**

**3**

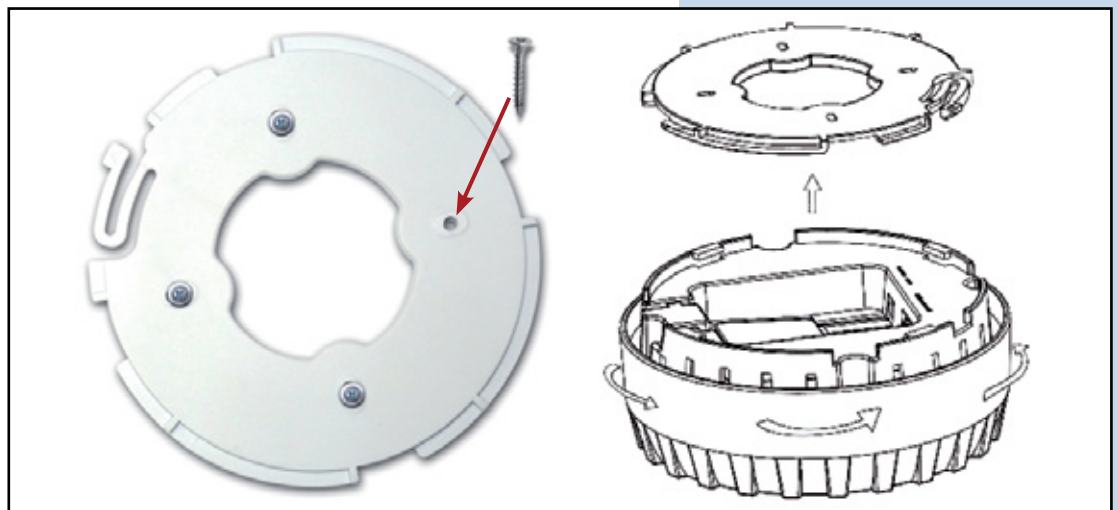
For fixation of the equipment on a wall or ceiling, proceed to remove the base by turning it as shown in **figure 3**.



**Figure 3**

**4**

Fix it on the selected place as shown in **figure 4**.



**Figure 4**

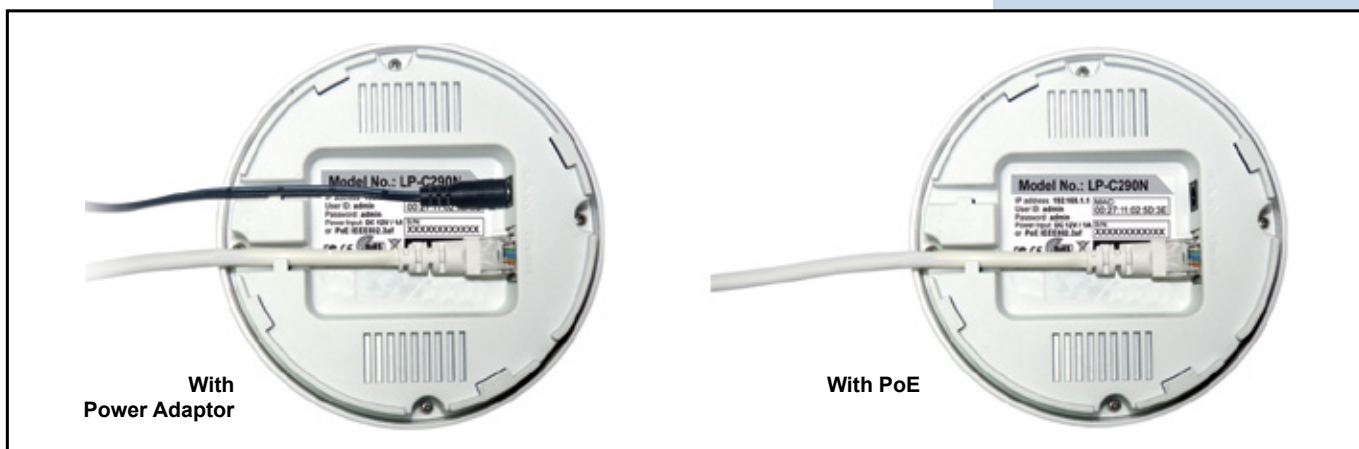
**5**

You must decide how to power the el LP-C290N, be it from the AC Mains with the furnished power adaptor or through the Ethernet cable by using a PoE PSD device.

**NOTE: Please be careful and avoid powering the device through both ways at the same time as you will provoke an internal short circuit that can damage the equipment.**

**6**

Remember to have an AC mains outlet near the device when powering it with the AC/DC adaptor, or by providing a PSD device complying with the IEEE 802.3 af standard at the other end of the Ethernet cable supplying data+power.



**Figure 5**

**7**

Proceed to connect it and to fix the base as shown in point **Number 4**.

**8**

Once connected, please proceed to its configuration.

**9**

Connect a PC or Laptop to the LAN where the LP-C290N is located, as shown in **figure 6**



**Figure 6**

## 10

Now go to your Network Card properties, as shown in **figure 7**

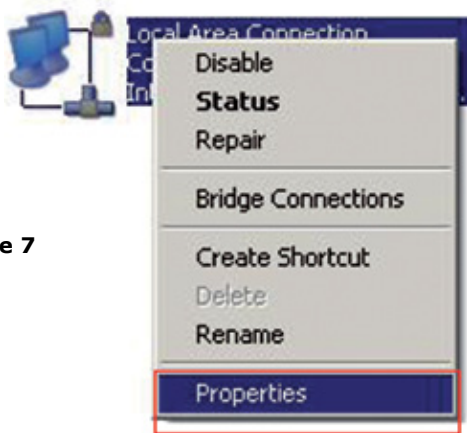


Figure 7

## 11

Select the TCP/IP protocol and properties again as shown in **figure 8**

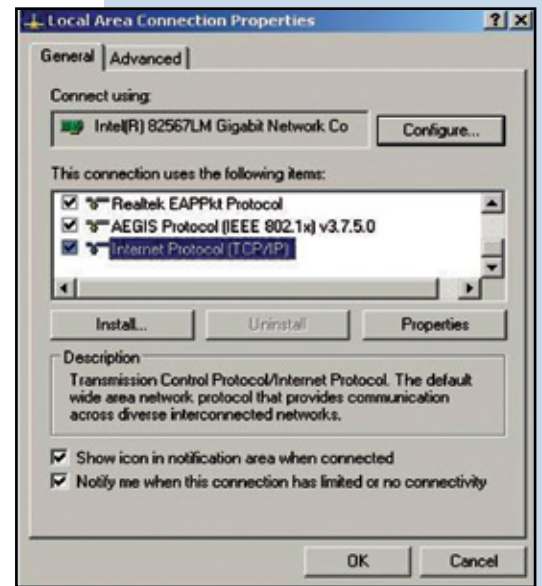


Figure 8

## 12

Assign an IP address inside the LP-C290N segment to your Network Card. The LP-C290N has a default IP address of 192.168.1.1, hence, we will use a different one in our network card like: 192.168.1.2; please see **Figure 2**, and remember that IP addresses cannot be repeated in your network. Proceed to select OK twice as shown in **figure 9**

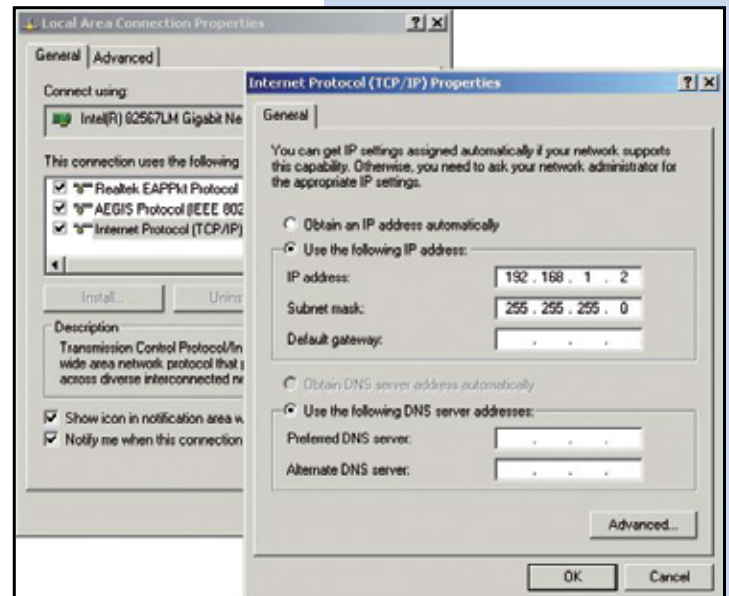


Figure 9

## 13

Proceed to open your preferred browser and with the LP-C290N IP address. In this case, use the default address 192.168.1.1, as shown in **Figure 10**.



Figure 10

## 14

The LP-C290N, will prompt for your credentials for accessing your configuration, in this case use the default ones: User name: **admin** y Password: **admin**, as shown in **figure 11**



Figure 11

## 15

Please proceed to validate the administration IP address of your LP-C290N in the scheme, please remember that in this case the LP-C290N is the AP in network and a router or ADSL must be present so as to deliver IP addresses to the clients connected to it. In this example the IP address of the AP will continue to be 192.166.1.1 as shown in **figure 12**, please remember that your network card's address is 192.168.1.2. Please see **figure 2**.

## 16

Select option **Operation Mode**, select **AP** option and then select **Apply**. Please see **figure 12**

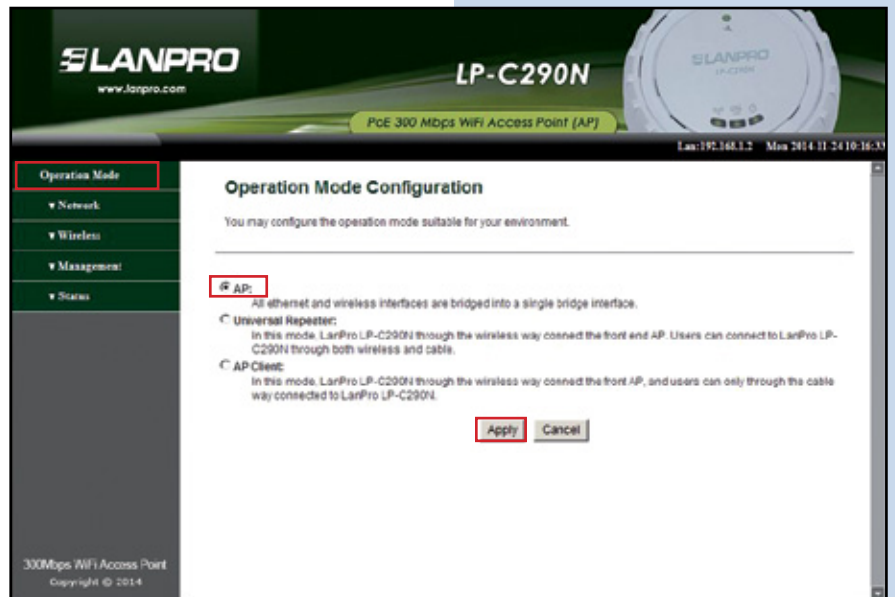


Figure 12

**17**

The equipment restarts, showing the change being done like in **figure 13**

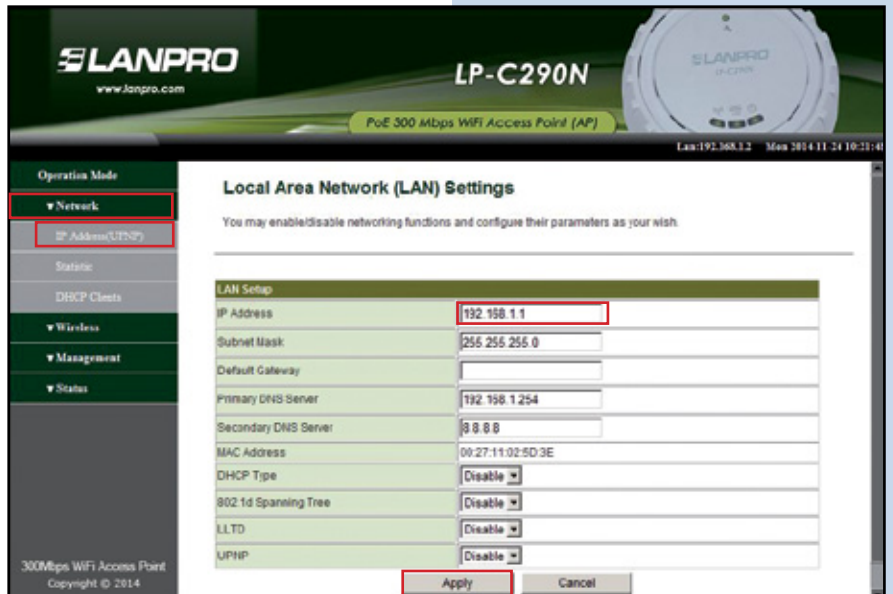
**Figure 13**



**18**

The other LP-C290N's shall have addresses in the same segment: the 192.168.1.x, E.G.: 192.168.1.3. Once the IP is set, select Apply and your equipment will reset and must be accessed through the new address if you changed it. In this case, we will leave the same, due to this being the first equipment. Please see **figure 14**

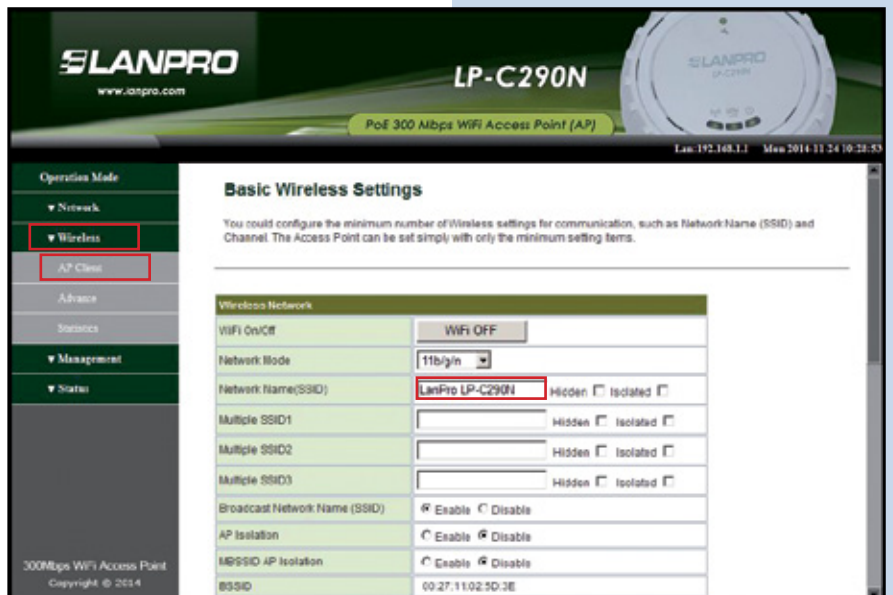
**Figure 14**



**19**

Input the name of the wireless network, in this example: LanPro LP-C290N, and proceed to select Apply, as shown in **figure 15**

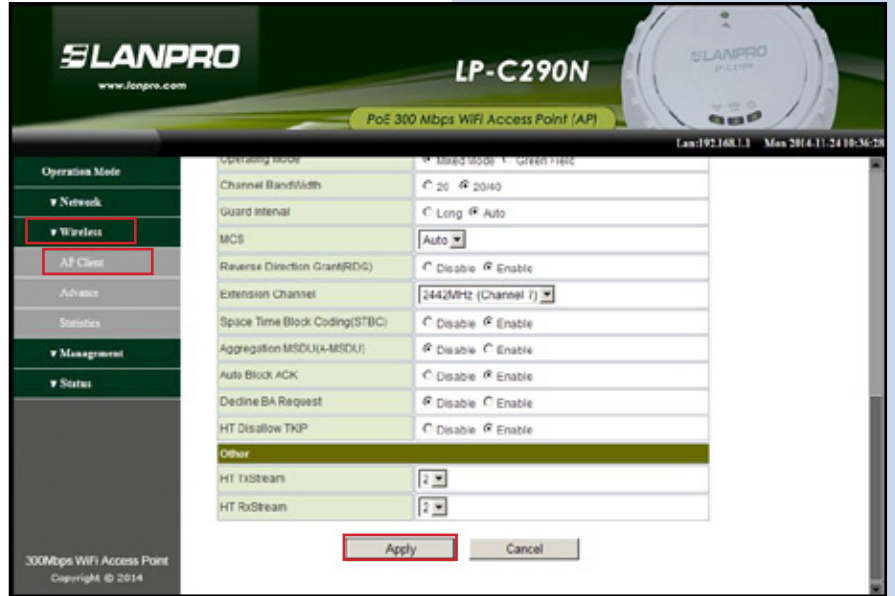
**Figure 15**



20

Proceed to select Apply, as shown in **figure 16**

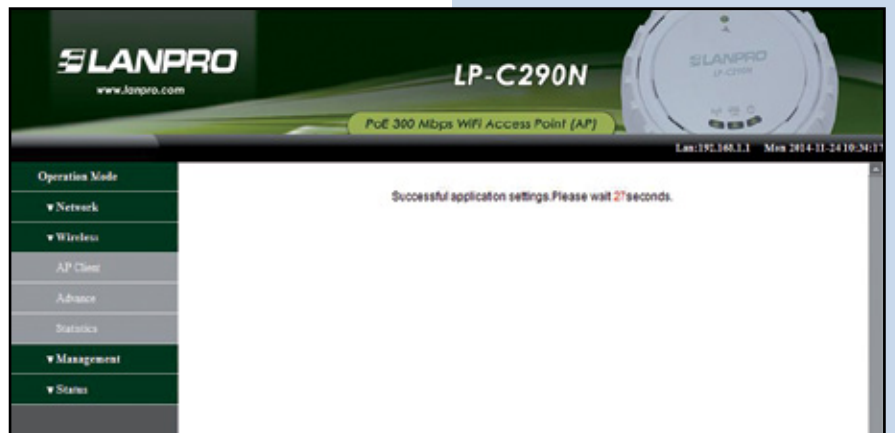
Figure 16



21

The equipment restarts, showing the change being done like in **figure 17**

Figure 17



22

We will proceed now to the setup of the wireless Access security. In order to accomplish this, please select Wireless Security and enable the security as shown in **figure 18**

Figure 18



23

Select **encryption** mode. In this case, we select **WPA/WPA2 PSK**, as shown in **figure 19**

Figure 19



23

In the type of algorithm, please select **AES** if the equipment that are to be connected are not N clients. We recommend the use of both (TKIP/AES) of them as shown in **figure 20**

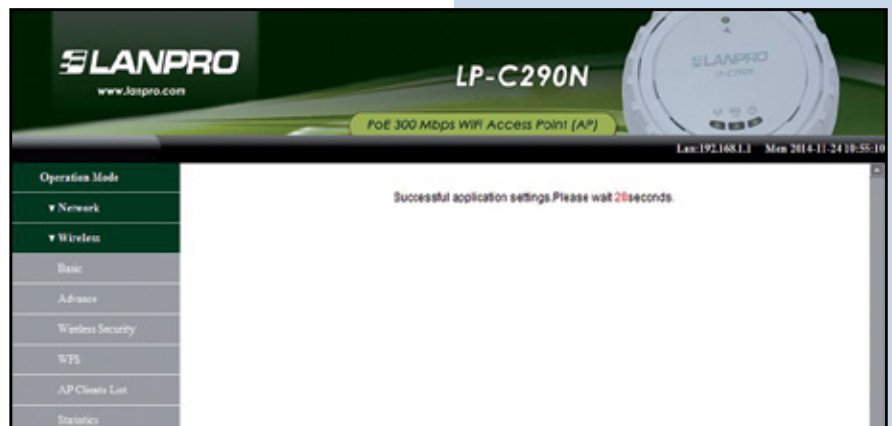
Figure 20



24

The equipment will show the changes done and will proceed to restart, as shown in **figure 21**

Figure 21





## 25

Proceed to change the password of the LP-C290N, we highly recommend this. This password will let you access as an administrator, to perform this, please select: **Managment/ Lenguage(Time)** and input it in the **Password** field and immediately select **Apply**, as shown in **figure 22**

Figure 22

