

# LP-5ai 123 Manual for Preparation and mounting.

LP5ai\_M123\_END01W



## LP-5ai 123 Manual for Preparation and mounting.



The following Instruction Manual will guide you on how to prepare and mount your LP-5ai. It is highly recommended that configuration is preceded to physically mounting it. For additional information, please review the Installation Guide included in the CD or by downloading it from the page: [www.lanpro.com](http://www.lanpro.com).

**1**

Please check the package contents compared to the parts shown in figure 1.



**Figure 1**

**2**

Preparation of the wall or mast mounting base.

- a Proceed to fix the base to the wall (See figure 2) or to the mast (Please see figures 3 and 4).



**Figure 2**

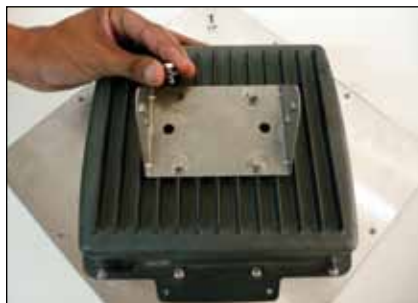


**Figure 3**



**Figure 4**

- b Proceed to turn the radio over, in order fix the base to the back of the radio as shown in figure 5 and 6.



**Figure 5**



**Figure 6**

- c Proceed to join the bases and insert the corresponding screws and washers, as shown in figures 7 and 8.



Figure 7



Figure 8

### 3

Cable preparation for powering the LP-5ai with PoE injector.

- a The recommended cable is the LP-214502 Outdoor Cat5e Cable by LanPro, and should be prepared following the proper wiring standard used in the downstream hardware. If grounding standards are enforced, cable should be of the braided type and the braid connected at the shielded RJ-45 plug, as shown in figure 9.



Figure 9

### 4

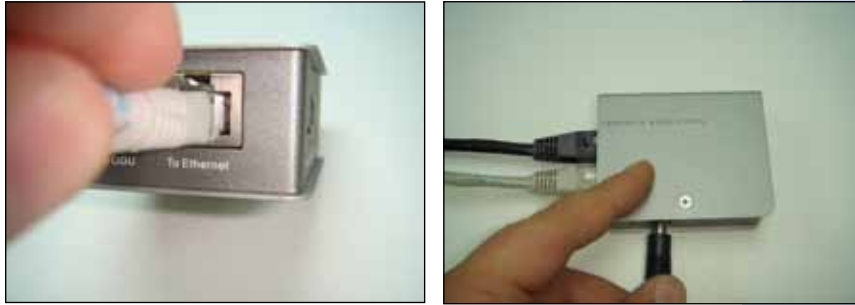
Now proceed to connect the cable prepared in paragraph 3 figure 9 to the LP-5ai with the other end to the PoE injector (To ODU port). Please see figure 10.



Figure 10

**5**

Connect a patch cord from the Switch or PC to the Injector port (To Ethernet) and connect the power input to the PoE injector as shown in figure 11.



**Figure 11**

**6**

Align the radio accordingly, please remember that the LP-5ai is antenna integrated.