

**LP-583ai 5.8GHz Band 802.11a/n Outdoor Radio
with Integrated Antenna**

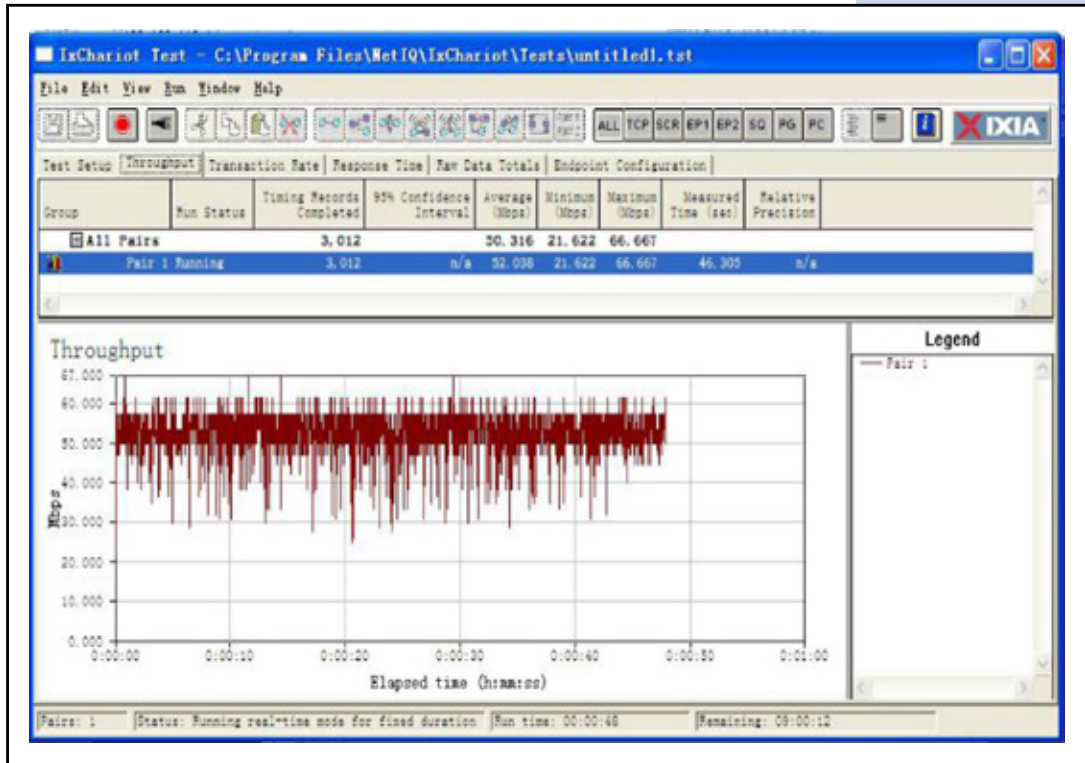
LP583ai_TST_ENB01W

**LP-583ai
5.8GHz Band 802.11a/n
Outdoor Radio
with Integrated Antenna
Test Report**

A Technical Specifications

SYSTEM LP-583AI				
CPU	AR9344+SiGe5012B			
Memory	8MB Flash; 64MDDR2			
Rate	300 Mbps			
Output Power	27 dBm			
ANTENNA CHARACTERISTICS				
Gain	16 dBi			
Polarization	Vertical, Horizontal			
Frequency Range	5.8 GHz (4920~6085 MHz)			
HPBW(Vertical)	60 Degrees			
HPBW (Horizontal)	30 Degrees			
SOFTWARE SYSTEM				
Operating System	Windows XP			
Operating Software	IxChariot			
ENVIROMENT				
Time	Day Time			
Weather	Sunny			
TRANSMITTER			RECEIVER	
Frequency (MHz)	Real Signal (dBm)	Real Bandwidth (Mbps)	Real Signal (dBm)	Real Bandwidth (Mbps)
5180	-70	45.8	-71	46.9
5200	-65	56.7	-66	55.9
5765	-69	45.3	-69	46.6
5785	-66	17	-66	29.6
5805	-71	46	-71	46.9
Distance	2.2 km (WITH LINE OF SIGHT, NO INTERFERENCE)			

B Bandwidth Test Record



C Testing place



LanPro is continuously improving its products and reserves the right to change specifications and availability without prior notice