

# LP-570G Installation Guide

LP570G\_IG\_ENB01W



## LP-570G Installation Guide



This manual will Guide you in the Installation of your **LP-570G**.  
Before you proceed with the installation, please read the following Notes:

**Note 1:** The following installation was operated under Windows XP. (Procedures are similar to Windows 98SE/Me/2000.)

**Note 2:** If you have installed the WLAN USB driver & utility already, please uninstall the old version first.

**Note 3:** Do not insert the wireless LAN adapter into your computer until the procedure of **Install the Driver & Utility** has been performed.

## A Installation

- 1 If you insert the Wireless LAN USB Adaptor into your computer USB port after installing the software program from the CD, the following window pops up.



Figure 1

- 2 Click **Cancel**.

- 3 Choose a set up language.

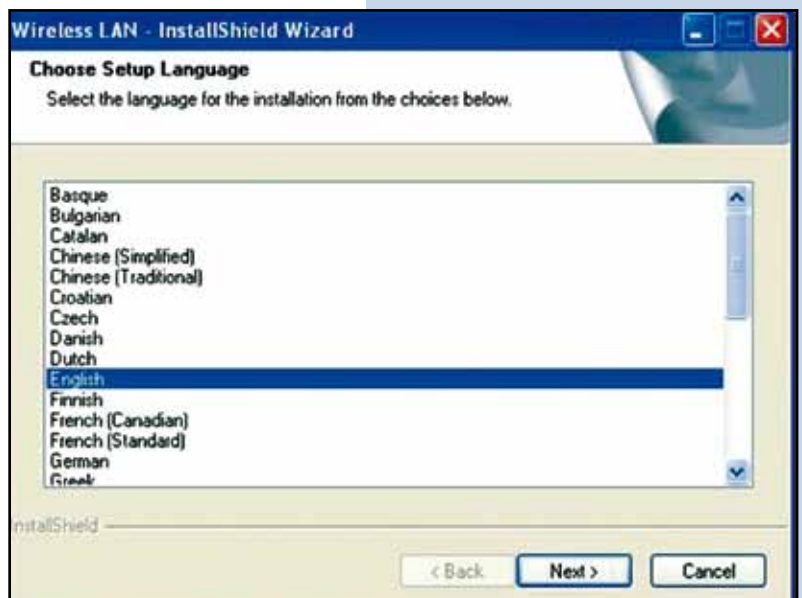


Figure 2

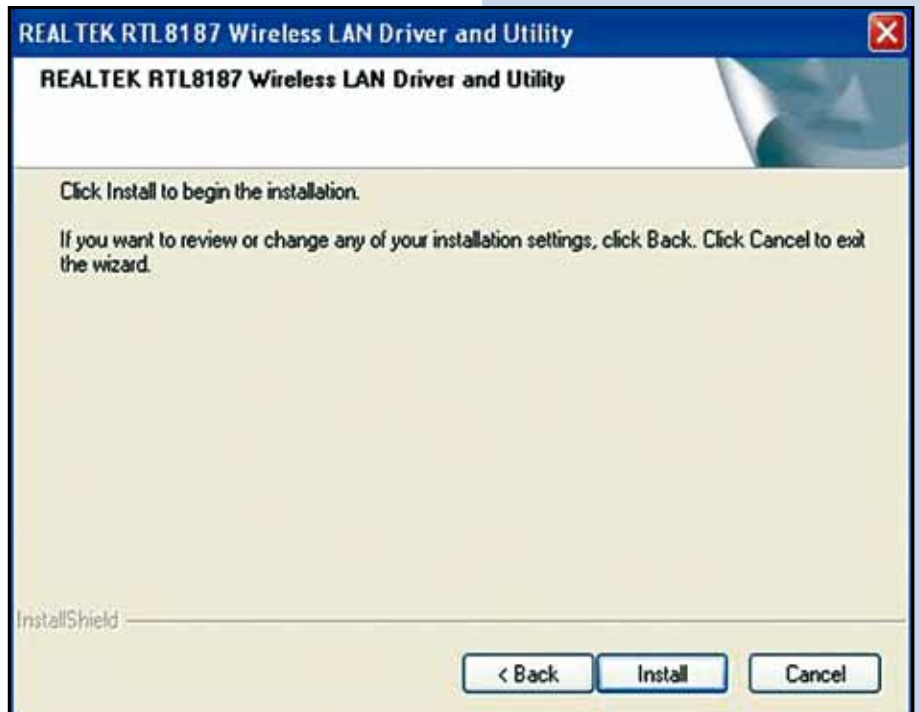
- 4 Click **Next** to process the installation.

Figure 3



- 5 Click **Install** to WLAN USB adaptor installation.

Figure 4



- 6 On the Windows Logo Software Installation screen, click **Continue Anyway** to continue. **Note:** Not all the drivers will have this message box.

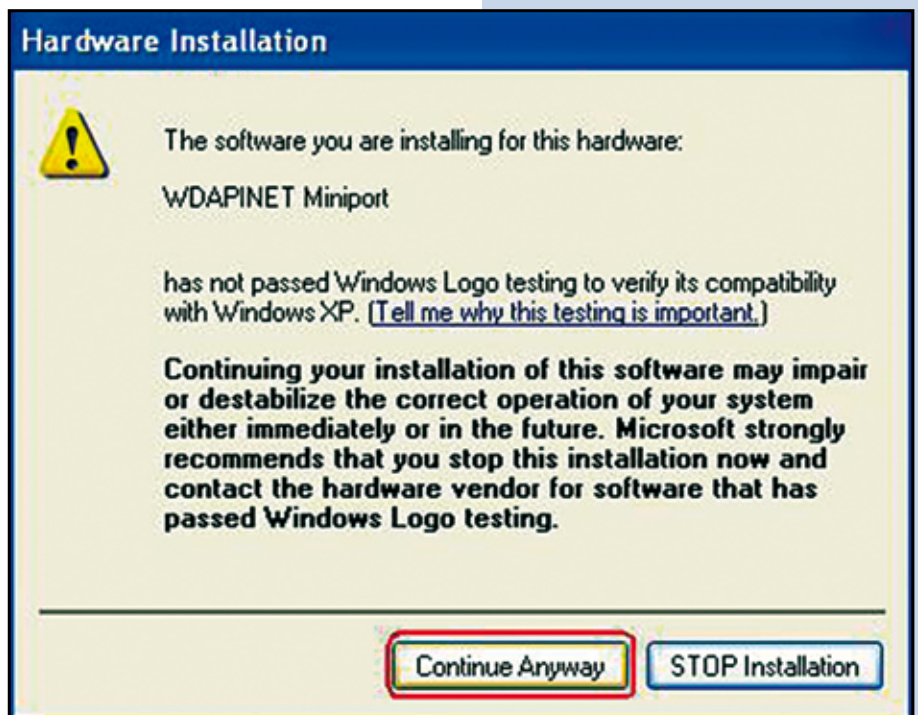


Figure 5

- 7 Click **Finish** to complete the installation.



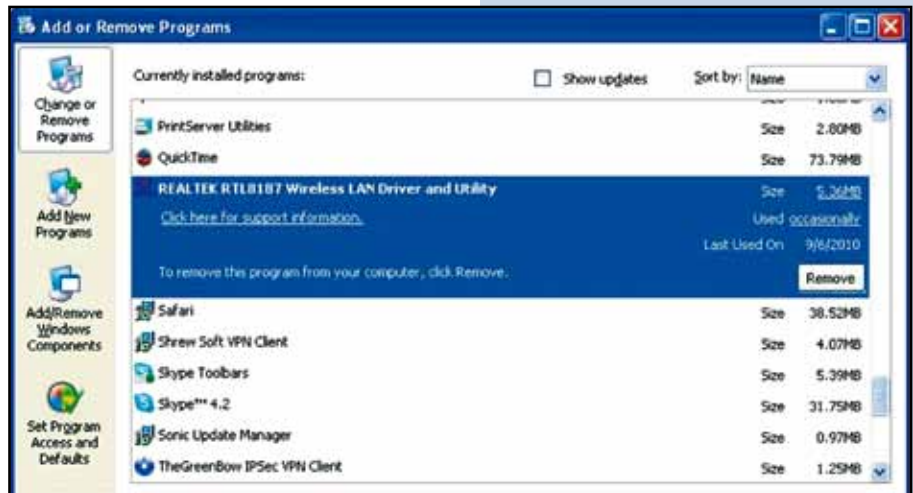
Figure 6

- 8 After setup, restart your computer.

## B Uninstallation

- 1 Uninstall the WLAN USB Adaptor Driver from **Wireless Network Driver and Utility** or **Control Panel**. Click **Uninstall** (or **Change/Remove**) to remove Wireless LAN USB Adaptor driver.

Figure 7



- 2 Click **Yes** if you want to remove Wireless LAN USB Adaptor Driver.

Figure 8



- 3 Click **Finish** to complete the uninstallation.

Figure 9



## C Making a Basic Network Connection

In the following instruction for making a network connection, we use the utility we provided to configure your wireless network settings.

**Note:** For Windows XP users that want to configure your wireless network using this Utility, please perform the following procedures to disable your native Windows XP wireless support (Wireless Zero Configuration Service)

- 1 Double click this icon on your desktop to start the utility



or this icon in the task bar.

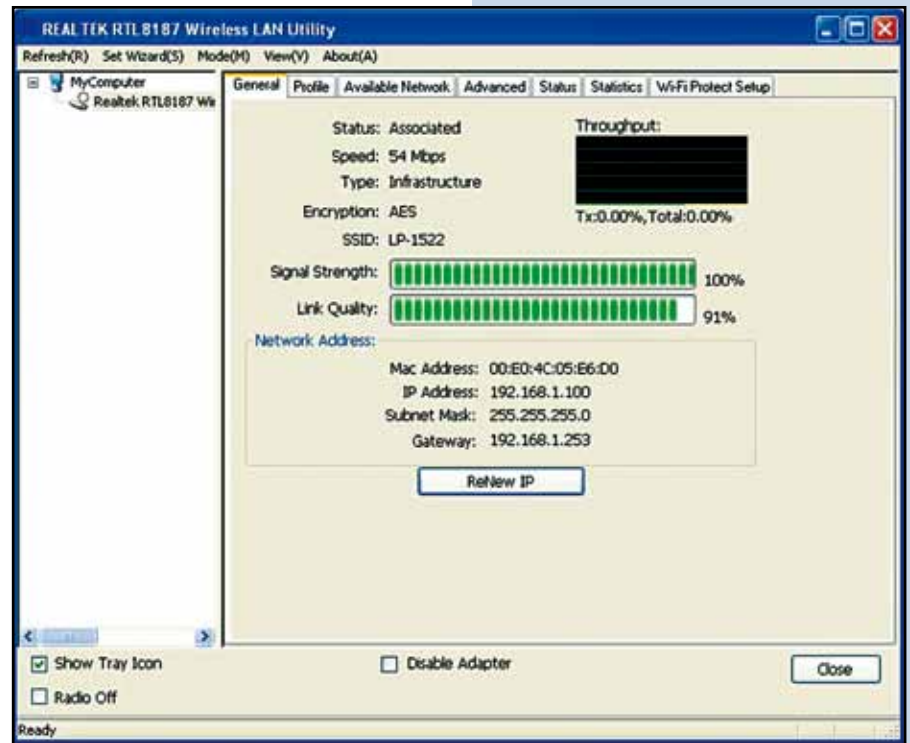


Figure 10

## D Ad-Hoc Mode

An **Ad-Hoc mode** wireless network connects two computers directly without the use of a router or AP. It is also known as a peer-to-peer network. For example, we can install this wireless adapter to two computers respectively. The communication between the two computers is an Ad-Hoc mode network.

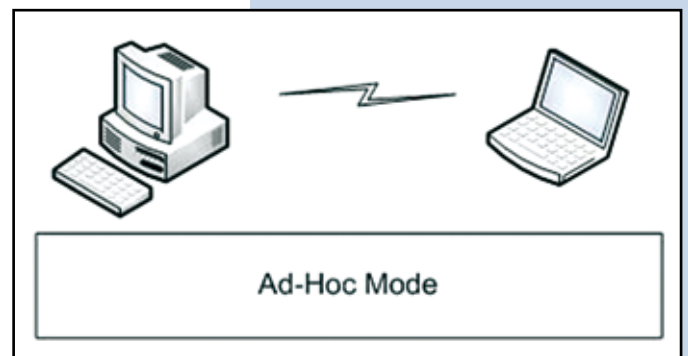
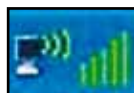


Figure 11

- 1 Double click this icon on your desktop to start the utility



or this icon in the task bar.



- Click the **Available Network** button to scan available wireless network adapters. Double click on the network adapter that you are going to connect to.

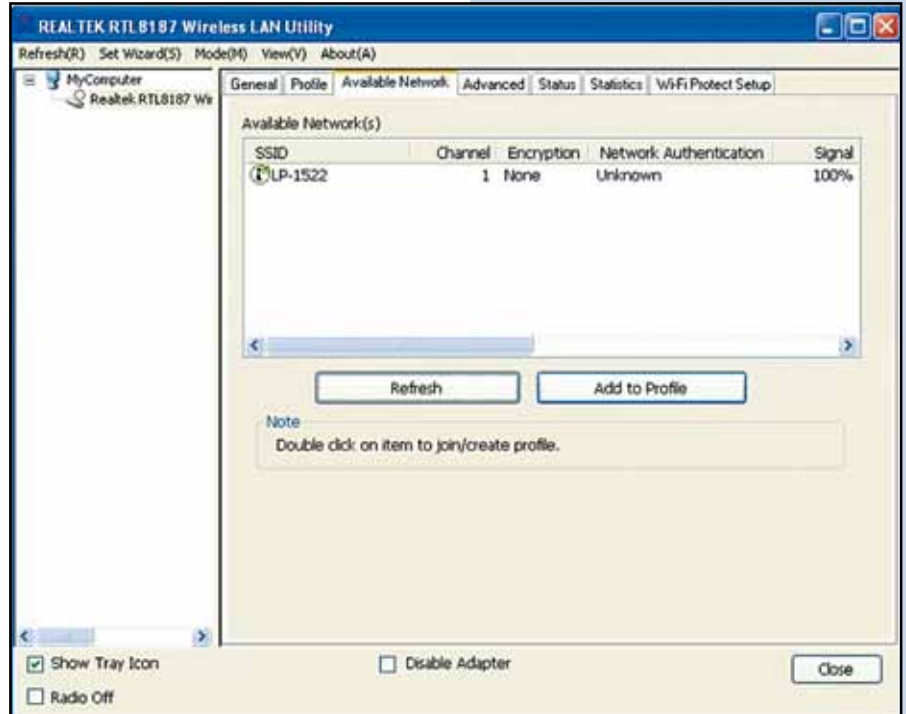


Figure 12

- Click the **OK** button to confirm that you are connecting to an open wireless network.

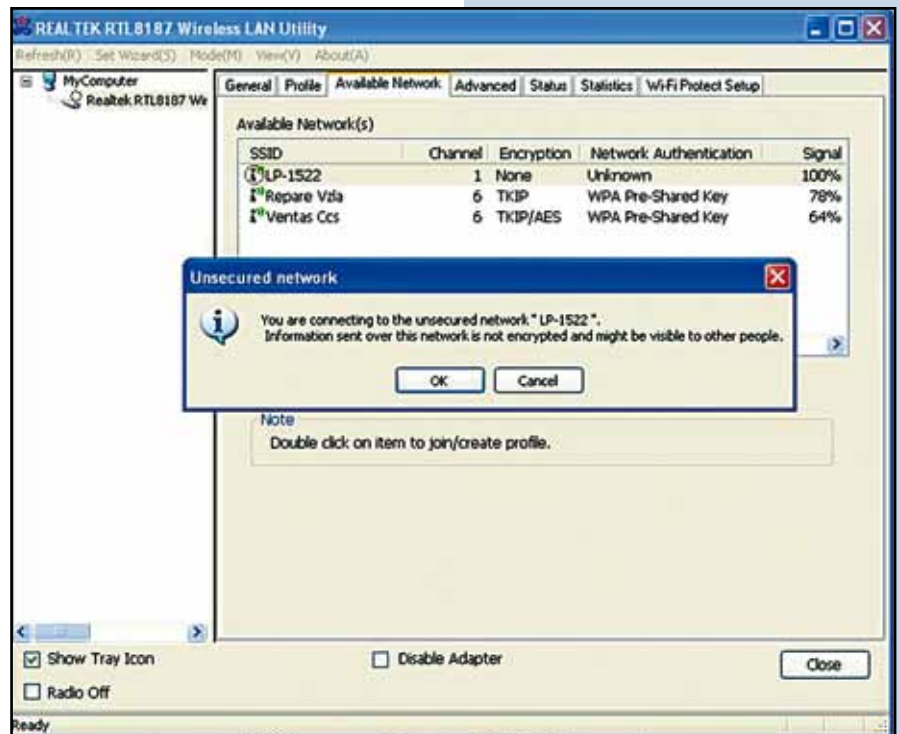


Figure 13

- 4 Click **OK** to add this network into the profile list.

**Note:** This example is an open wireless network. If you are going to connect to a Wireless adapter with security protection, you will have to configure the encryption settings in this profile to be corresponding to the other wireless adapter. Please click on the **Network Authentication** drop list to select an authentication method, and then select a **Data encryption** type. Fill in each required blanks and click **OK**.

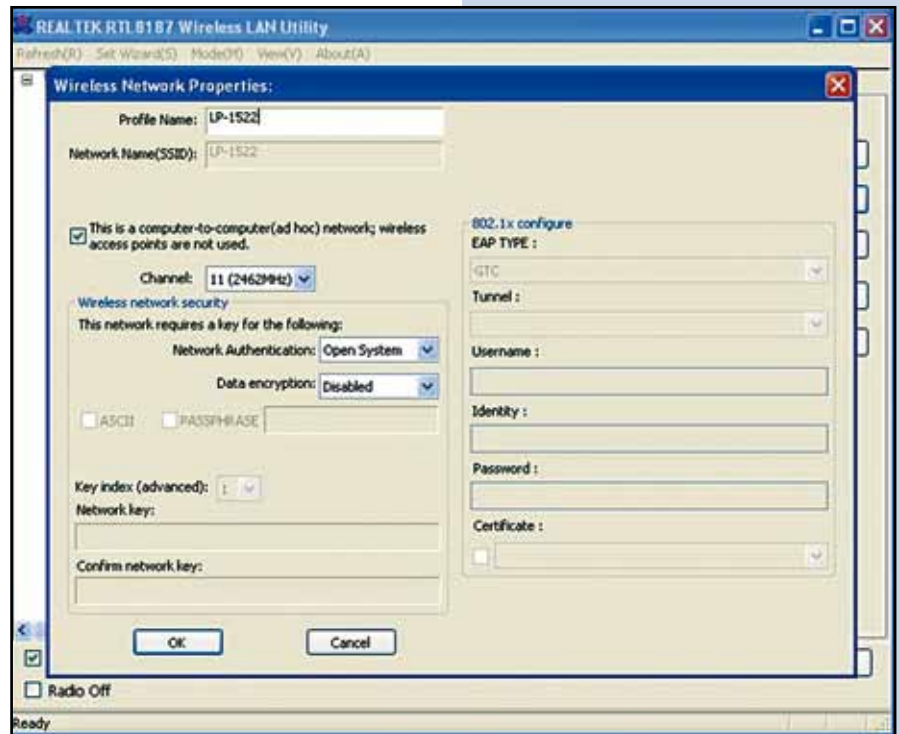


Figure 14

## E Infrastructure mode

An **Infrastructure Mode** network contains at least one wireless client and one wireless AP or router. This client connects to Internet or intranet by communicating with this wireless AP.

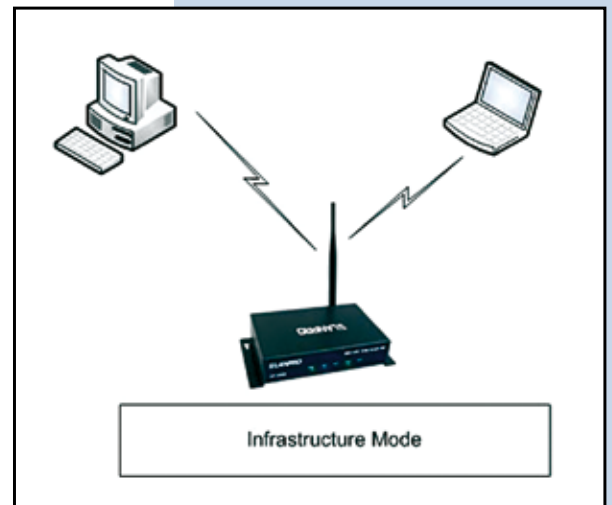


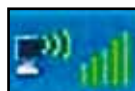
Figure 15

To use this adapter in Infrastructure Mode:

- 1 Double click this icon on your desktop to start the utility



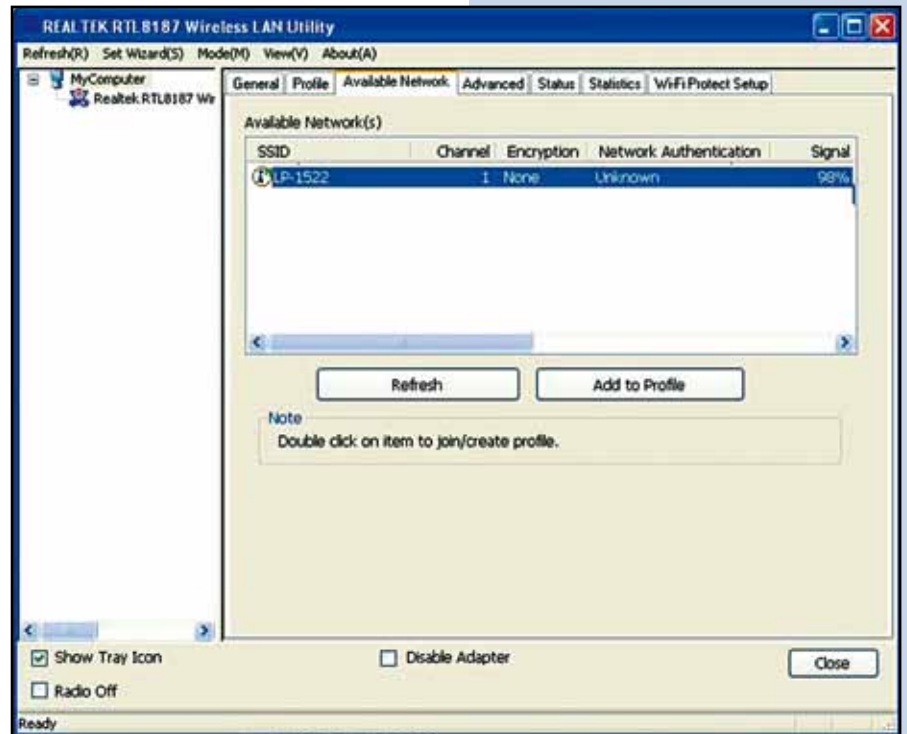
or this icon in the task bar.





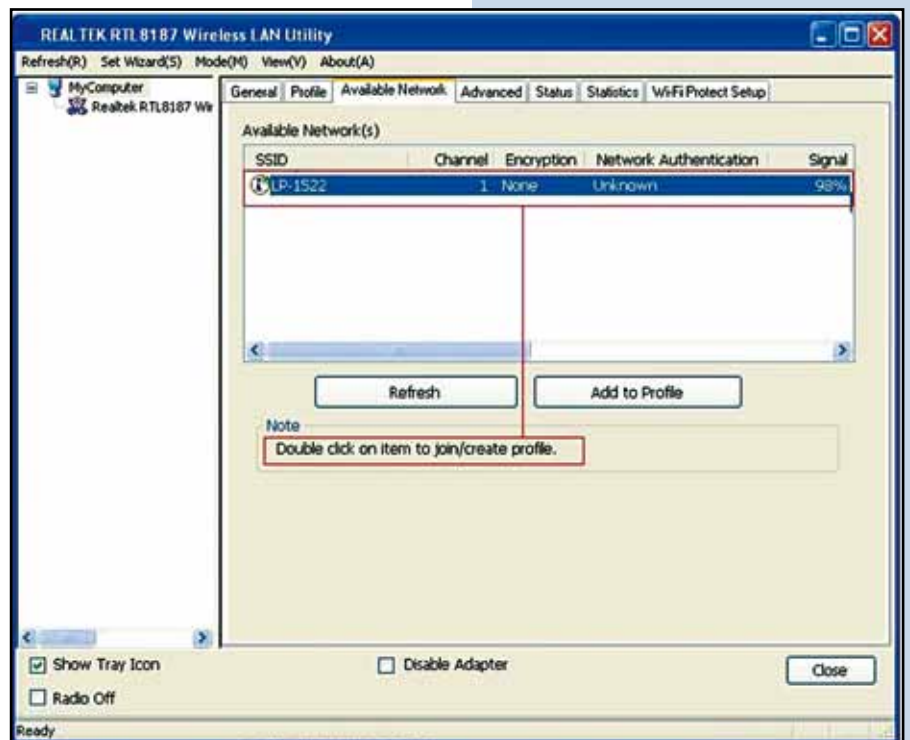
- 2 Click the **Available Network** button to scan available access points. Double click on the AP that you are going to connect to.

Figure 16



- 3 Double click to create profile that you are connecting to an open wireless network.

Figure 17



- 4 Click **OK** to add this network into the profile list.

**Note:** This example is an open wireless network. If you are going to connect to an AP with security protection, you will have to configure the encryption settings in this profile to correspond to your AP. Please click on the **Network Authentication** drop list to select an authentication method, and then select a "Data encryption" type. Fill in each required blanks and click **OK**.

**Tip:** Windows XP and Windows 2000 users is also allowed to connect to your wireless network with the **RT-Set** setup wizard. Please refer to **Appendix** for more information.

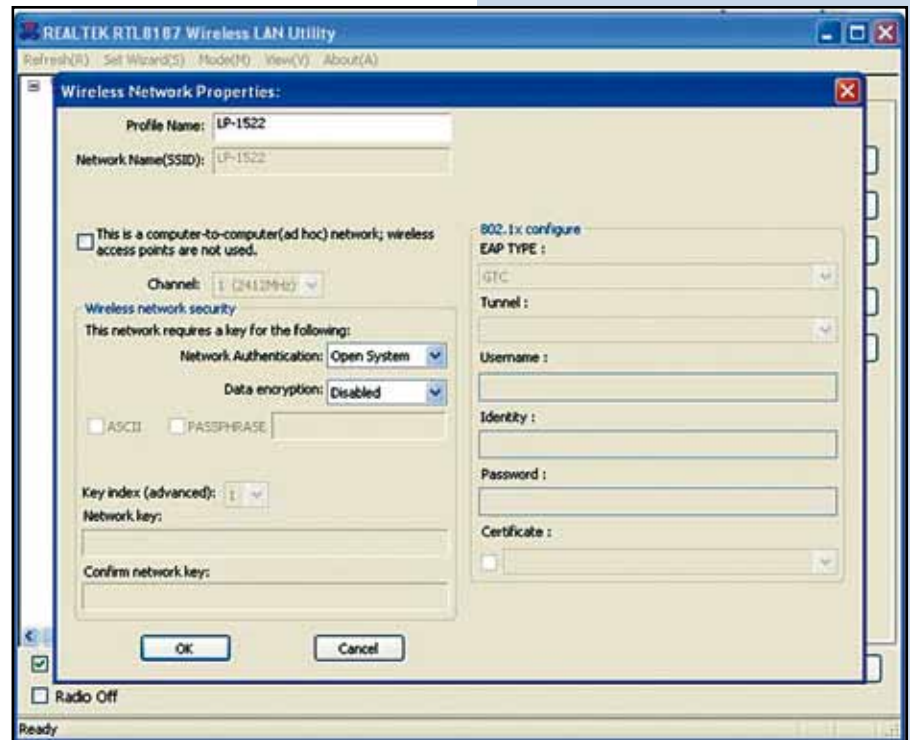


Figure 18

## F Introduction to the Wireless LAN Utility

**Note:** This management instruction uses Windows XP as the presumed operation system. Some functions are not supported in Windows 98se or Windows ME.

- 1 Starting the Wireless LAN Utility

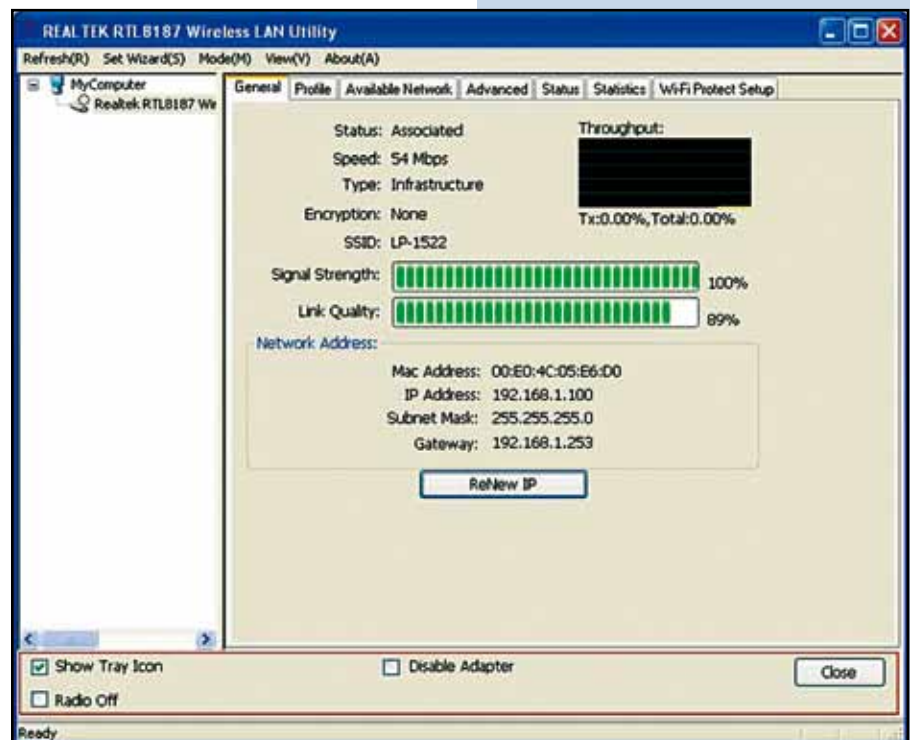


Figure 19

2 You may click on the tabs above to configure this adapter. The checkboxes below provide the following functions:

- Show Tray Icon
- Radio Off
- Disable Adapter

<b>Show Tray Icon</b>	Check this checkbox to show the utility icon on your system tray, which is in the notification area at the lower-right corner of the windows desktop. You may also uncheck it to remove the utility icon from system tray.
<b>Radio Off</b>	Check this checkbox to prevent this adapter from transmitting or receiving signals. Uncheck it to communicate.
<b>Disable Adapter</b>	Check this checkbox to disable this wireless, Uncheck it to enable this adapter again.

**General**

After starting the utility, the general page pops up. This General tab provides the information of your current wireless network connection. You may click the **Renew IP** button to refresh those listed information.

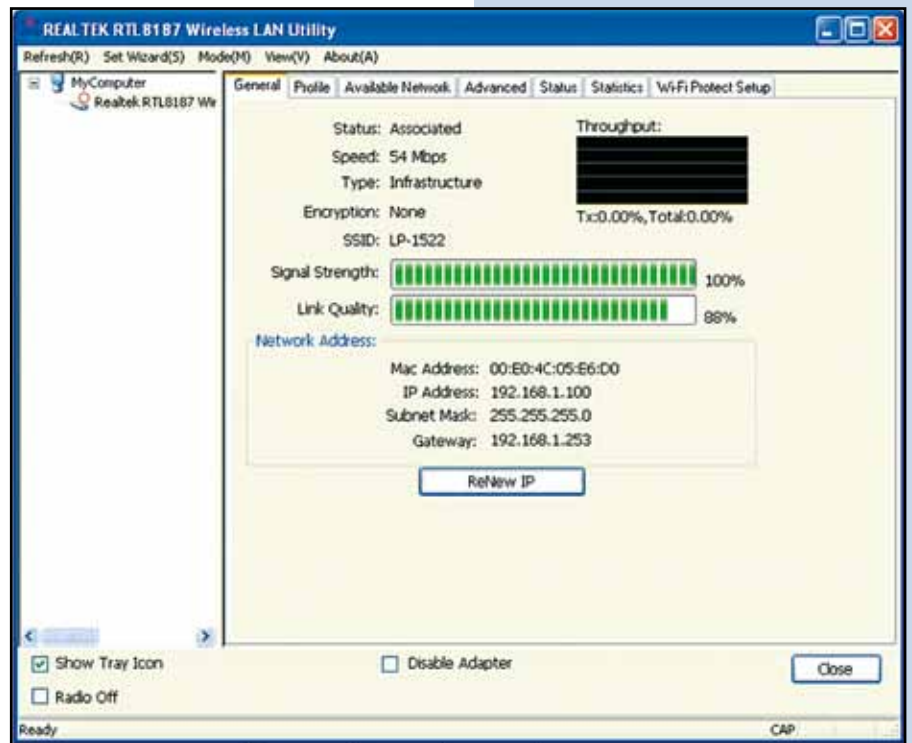


Figure 20

- Status:** Check if the device associated to target network.
- Speed:** The current connection speed.
- Type:** Infrastructure mode or Ad-Hoc mode.
- Encryption:** The performing encryption mode for connecting to current network profile.
- SSID:** The SSID (network name) of the connected wireless network.
- Signal Strength:** Indicates the signal strength detected by this adapter.
- Link Quality:** Indicates the link quality of this wireless connection.
- Network Address:** Shows the current IP addresses settings for this adapter.

## Profile

The Profile tab lists the preferred connections. You can click the buttons beside to do configure each connection.

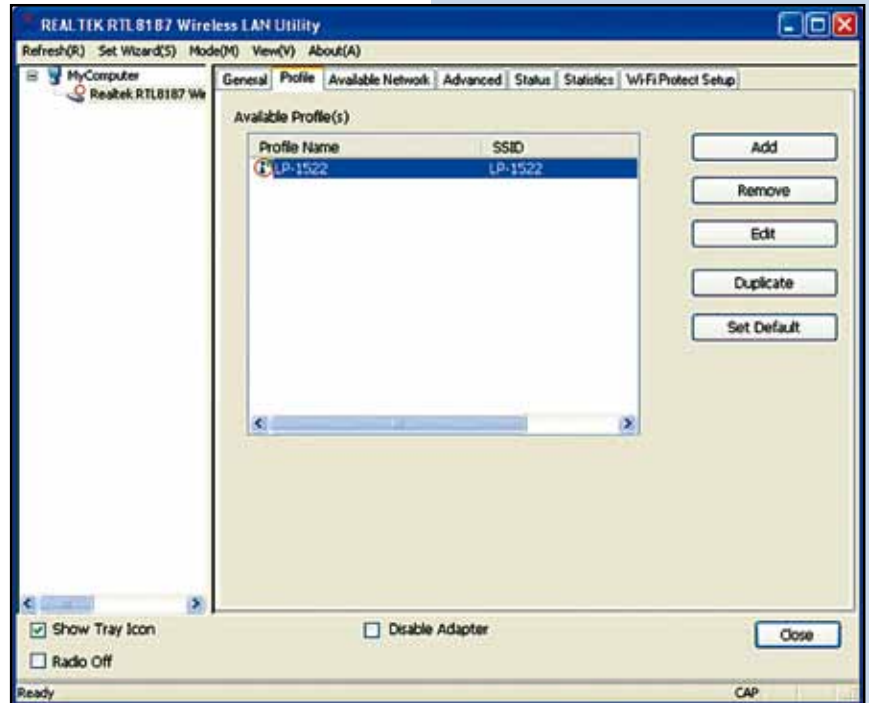


Figure 21

**Add:** Click this button to add a connection profile for this adapter.

**Remove:** To remove a connection profile, click this profile on the profile list and click this button to delete it.

**Edit:** To modify the configurations for a profile, click this profile on the profile list and click this button to edit.

**Duplicate:** To make a copy of a profile, click the profile that going to be copied, and click this button to copy it.

**Set Default:** To select a profile as your default wireless connection, click this profile on the list and click this button. You may also double click on each profile to select it as your default wireless connection.

## Available Network

This available tab lists the reachable wireless network of this adapter.

**Refresh:** Click this button to rescan available networks around the adapter.

**Add to Profile:** To add an available Network to your profile list, select the **Available Network** and click this button to add.

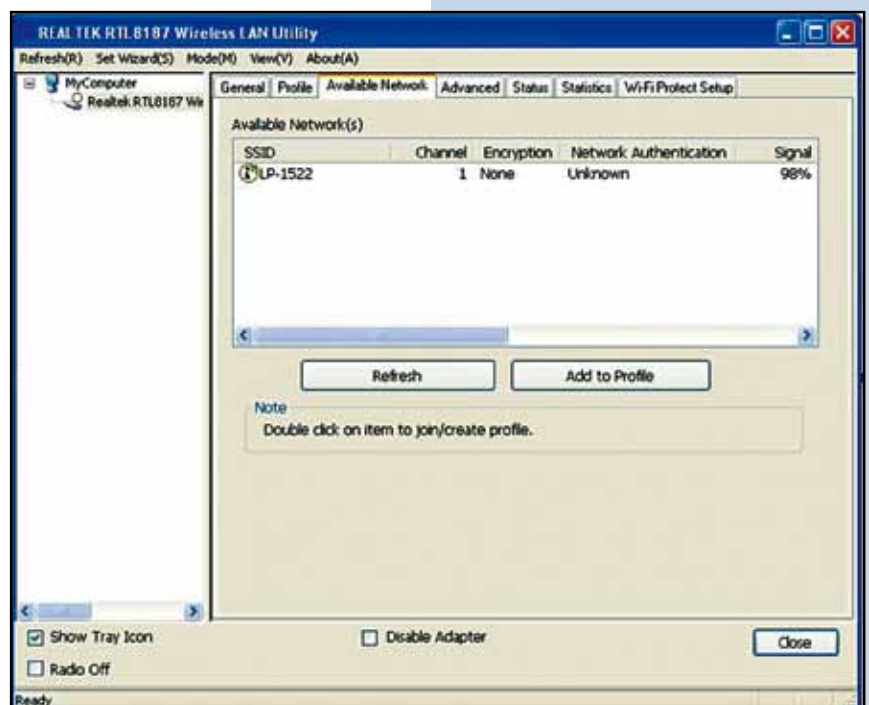
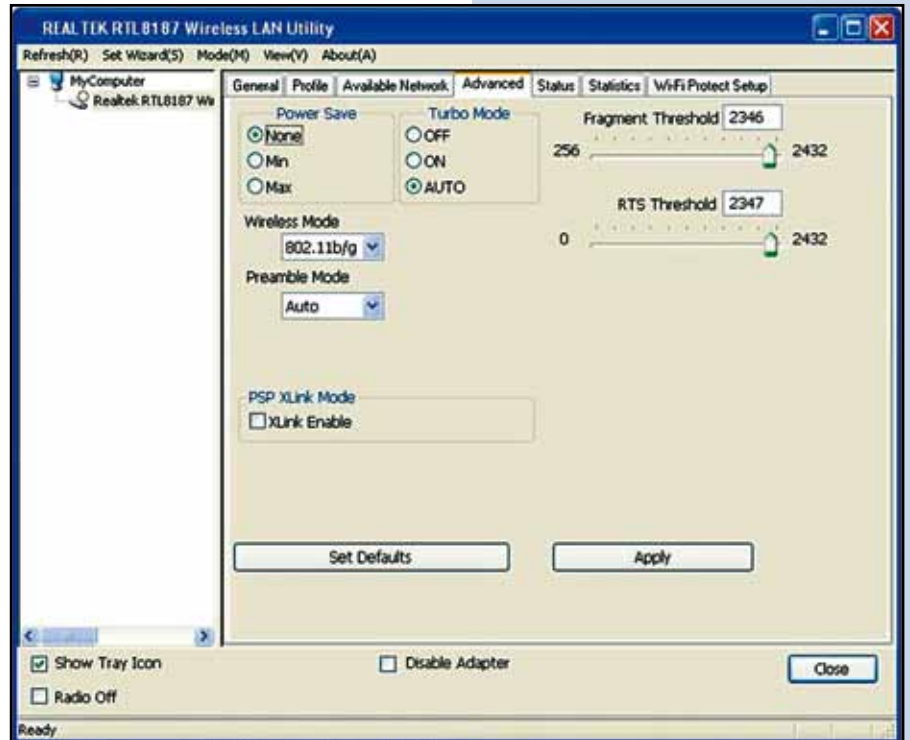


Figure 22

**Advanced**

This **Advanced** tab provides advanced configurations to this adapter. Every modification in this tab will be performed after clicking the **Apply** button.

To restore the default settings of the advanced tab, click the **Set defaults** button to perform restoring.

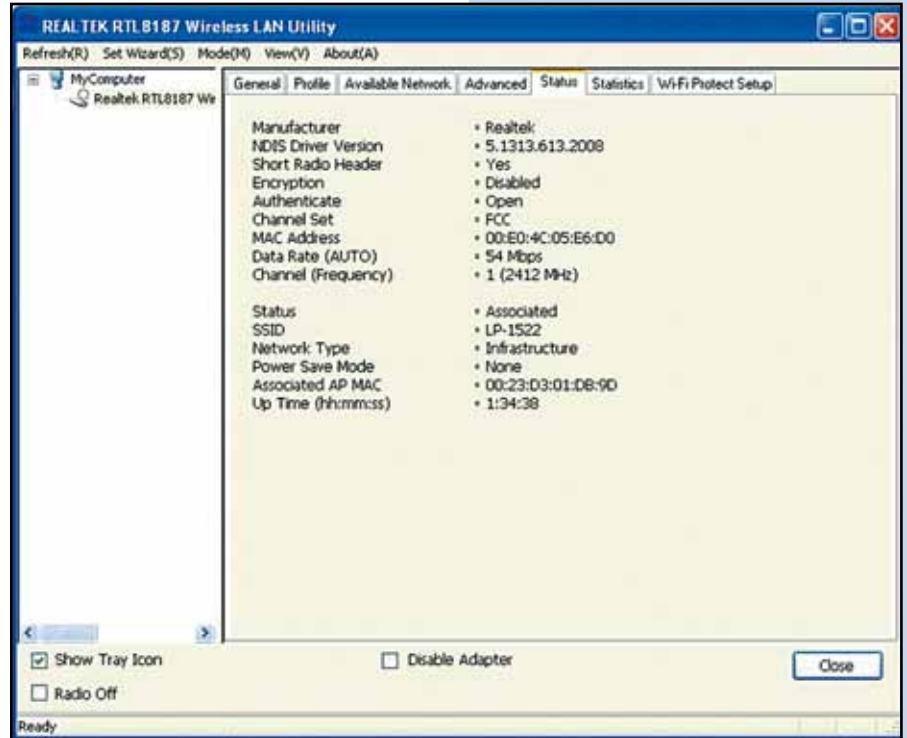


**Figure 23**

Power Save	
None	Disable Power saving function
Min	Minimum power consumption
Max	Maximum power consumption
Turbo Mode	
Off	Disable turbo mode
On	Enable turbo mode
Auto	Enable or disable turbo mode automatically according to the detected environment
Fragment Threshold	
The maximum size of a packet that is going to be segmented and transmitted. Select the size from 256 to 2432(default) bytes.	
RTS Threshold	
Select the RTS Threshold form 0 to 2432(default)	
Wireless Mode	
802.11g/b	Connect to a 802.11b/g network (2.4GHz/54Mbps)
802.11b	Connect to a 802.11b network (2.4GHz/11Mbps)
802.11b Preamble Mode	
Select the preamble mode to be long, short or auto detection mode.	
Channel Plan	
Select your region from the drop list. Please note that it is necessary for you to select a correct region. Selecting an incorrect region may again the applicable law.	
PSP XLink Mode	
If you are using the PS2 or X-box for wireless connection	

**Status**

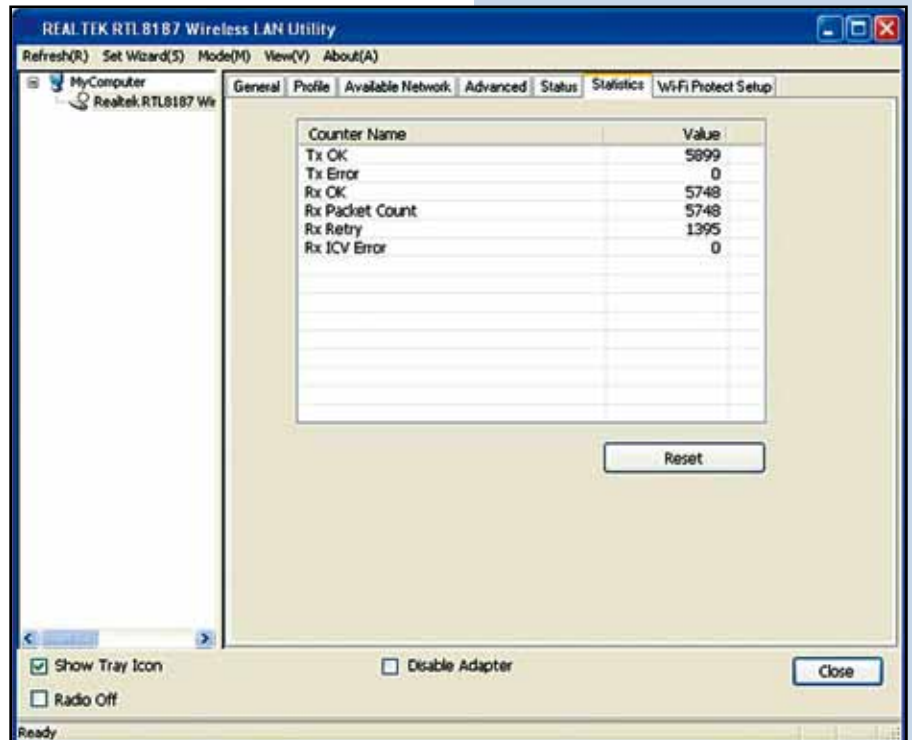
This tab shows the current connection status of this adapter.



**Figure 24**

**Statistics**

See this tab to show the transmission activity record. Clicking the **Reset** button recounts the values from zero.



**Figure 25**

## Wi-Fi Protected Setup

This device provides Wi-Fi Protected Setup, an easy and secure Wi-Fi network setup solution, which contains two options of operation methods, each one will be functional.

**PIN Method:** After pushing the PIN button, please enter your PIN code into your AP.

**PBC Method:** After pushing the PBC button, please push the physical button on your AP or visual button on the WPS configuration page.

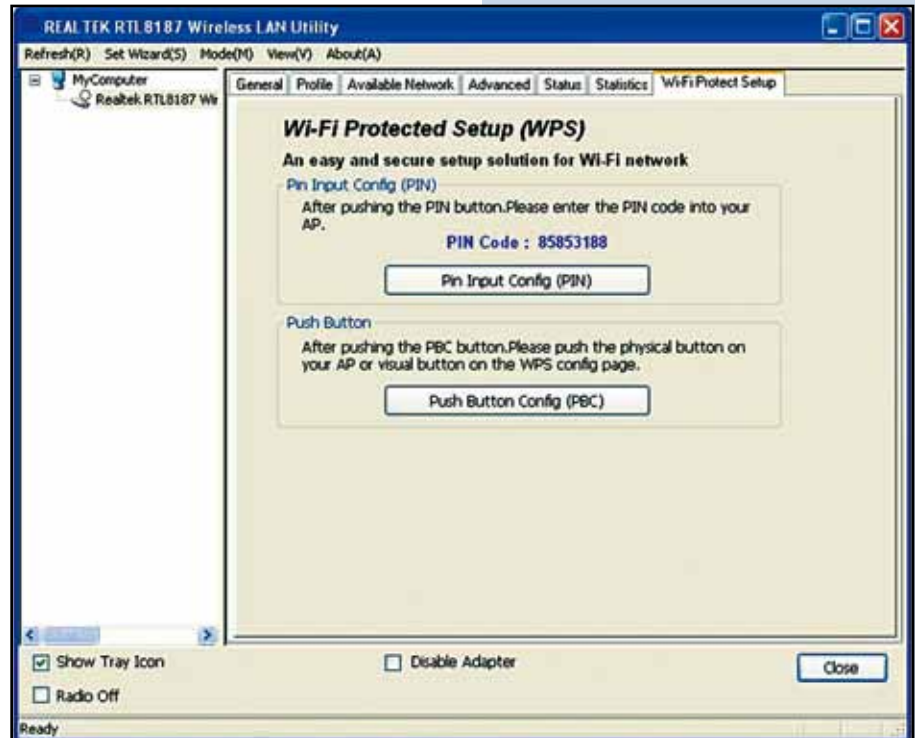


Figure 26

## AP mode management guide

### General

After configuring the adapter in AP mode, this **General** page shows up, which shows the general information of this AP.

**SSID:** The SSID (network name) of the wireless network constructed by this AP.

**BSSID:** The MAC address of this AP.

**Config:** Click this button to change configurations to this AP.

**Association Table:** Shows the information of those devices that associated with this AP including their MAC addresses and the time that they connected with this device.

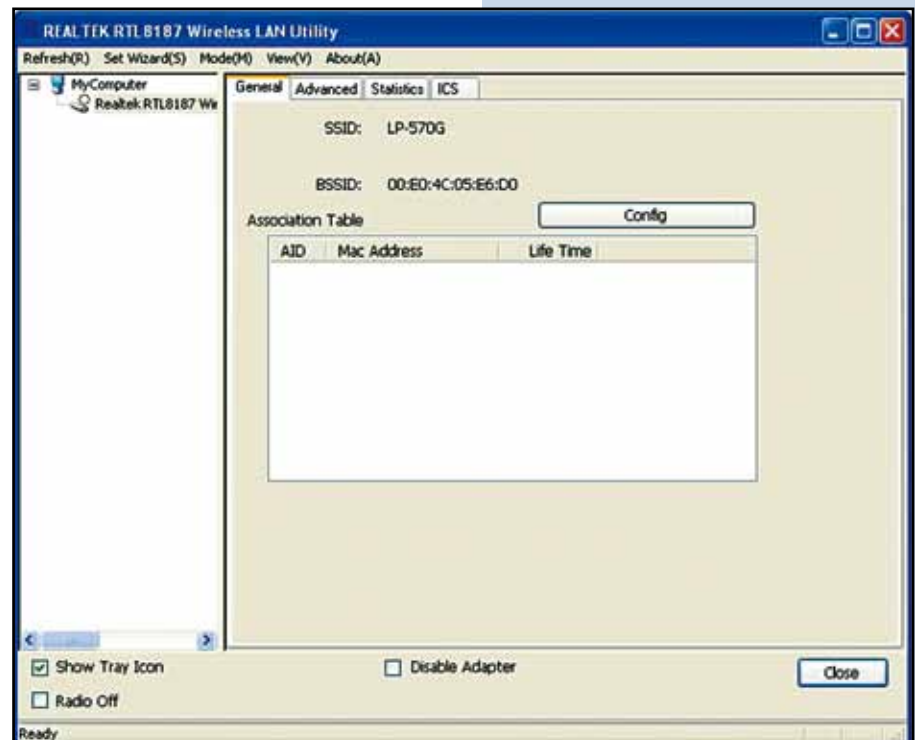


Figure 27

**Advanced**

- Beacon Interval:** Define the interval between beacons from 20~1000.
- DTIM Period:** Set the DTIM period between 1~255.
- Preamble Mode:** Click the drop list to select the preamble to be long, short or auto.
- Set Defaults:** Click this button to restore the settings above to default.
- Apply:** Click this button to execute changes.

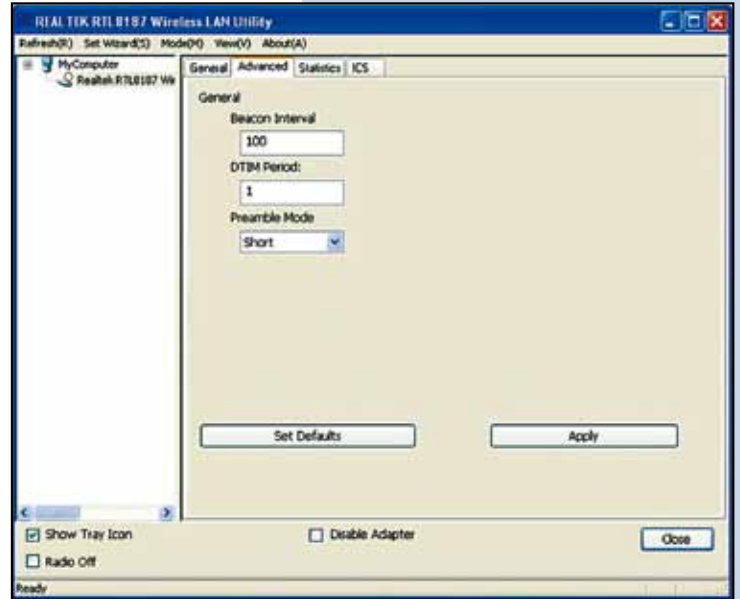


Figure 28

**Statistics**

See this tab to show the transmission activity record. Clicking the **Reset** button recounts the values from zero.

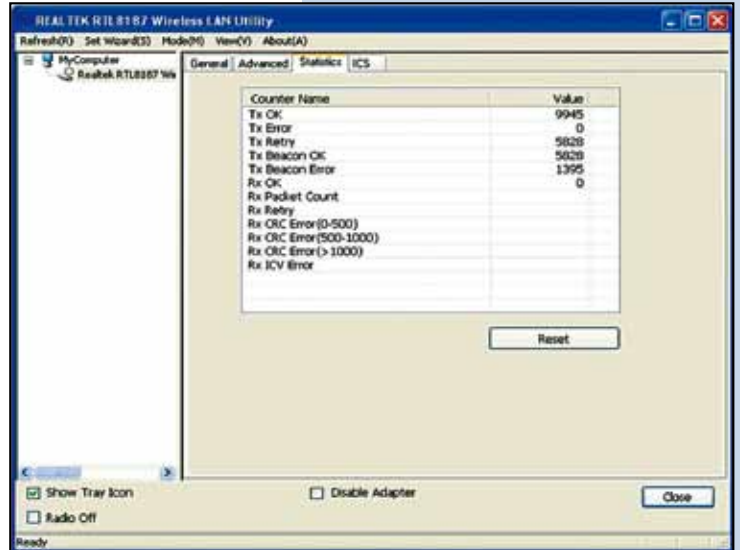


Figure 29

**Internet Connection Sharing (ICS)**

This page allows users to select the adapter for connect to public network.

Please click on the device that are used for connecting to public network and click the **Select** button, and then click the **Apply** button to execute.

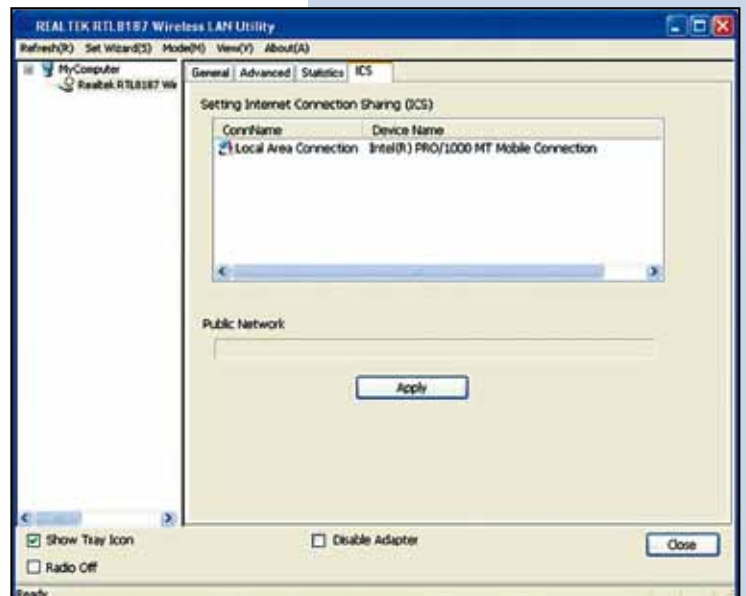


Figure 30