

LP-349 123 Manual in AP Mode.

LP349_M123_ENE01W



**LP-349
123 Manual in AP Mode.**



The following Instruction Manual will guide you on how to configure the LP-349 in AP Mode.

1

Once the Setup 123 Manual has been executed, proceed to configure it by first connecting the UTP cable that comes from the LP-349 to the **To Odu** port of the PoE Injector furnished with the radio as shown in figure 1.

Figure 1



2

Connect an UTP cable from the **To Ethernet** port of the PoE injector to the Switch or PC as shown in figure 2.

Figure 2



3

Connect electric power to the PoE injector as shown in figure 3.

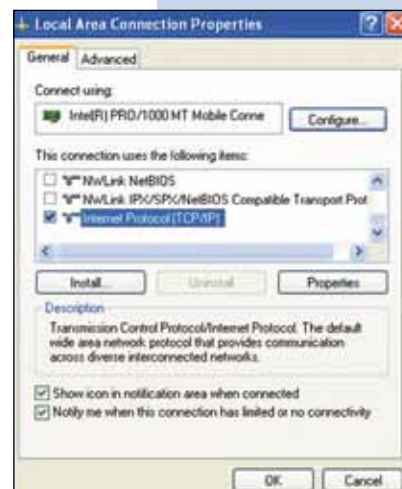
Figure 3



4

Please go to your network card properties window and select: **Internet Protocol**, then select: **Properties**, as shown in figure 4.

Figure 4



5

In the window shown in figure 5, select: **Use the following IP address** and input an **IP** address in the range of **IP** set by default of the LP-349. In this example, we have selected address: **192.168.1.201**, the LP-349 has a default address of: **192.168.1.1**, input 255,255,255,0 in: **Subnet Mask**, in: **Default gateway** input the destination router address, in: **Preferred DNS Server** you must input the **DNS** address of your service provider or the **IP** address of your destination router, the one that provides the Internet Service, this is will route any corresponding queries to the router of the destination network.

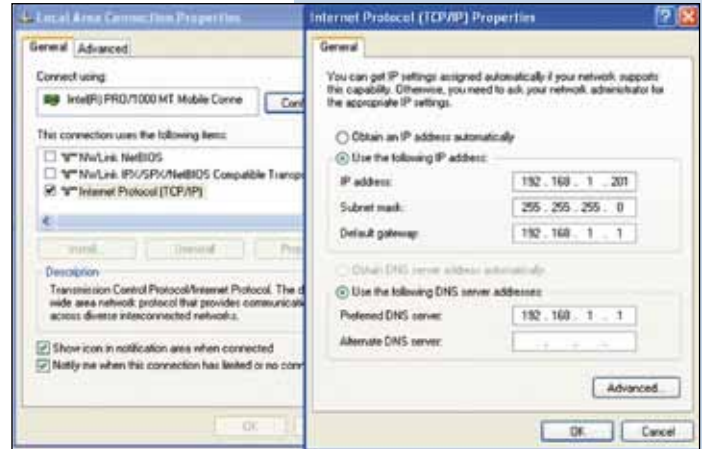


Figure 5

6

Please open your preferred browser and input the default address: 192.168.1.1, please see figure 6.



Figure 6

7

In the certificate validation window shown in figure 7, please accept by selecting: **Continue to this website (not recommended)**.



Figure 7

8

In the window shown in figure 8, input the word **admin** in: **Name** and the word: **password** in: **Password** and then select: **Login now**.

Figure 8

9

In the window shown in figure 9 you have the option of configuring up to eight(8) Virtual APs in the LP-349, and you will be able to connect up to 32 clients (If you enable that option of course) to each one of them.

By default, the LP-349 comes in AP mode, but if this is not the case, please select option: **Basic Settings** in the submenu of **Wireless Setup** and then select: **Access Point** as shown, then select: **Apply**.

Figure 9

10

In the window shown in figure 10, in: **SSID** proceed to select: **Edit** in order to configure the virtual AP's. In this page you will also be able to configure the channel or frequency in which you wish to transmit, it is important to mention now that all the **VAP's** will be in the same frequency and channel.

Figure 10

11

In the window shown in figure 11, select the **VAP** you wish to configure. Only one of them is enabled by default but without security. Select: **Edit** in order to perform the change.



Figure 11

12

In figure 12, the options for configuring the first Virtual AP or **VAP**.



Figure 12

13

In the window shown in figure 13, input in: **SSID** the name you wish to assign to the first VAP. Select the encryption mode desired and the appropriate Key. In the option: **Max Station Number(1-32)** you will be able to limit the number of concurrent clients that can connect to this VAP , this is with the intention of having a better performance of the equipment and to establish a better control over them. Select then: **Apply** to apply the changes.



Figure 13

14

It is important to mention that all the VAP's will share the set of Keys in WEP, being only able to change the key for authentication and encryption to be used by default. In order to enable another VAP, you must set: **Enable** and then: **Apply** as shown in figure 14, then proceed to configure the security by repeating paragraphs 11, 12 and 13 for this VAP.

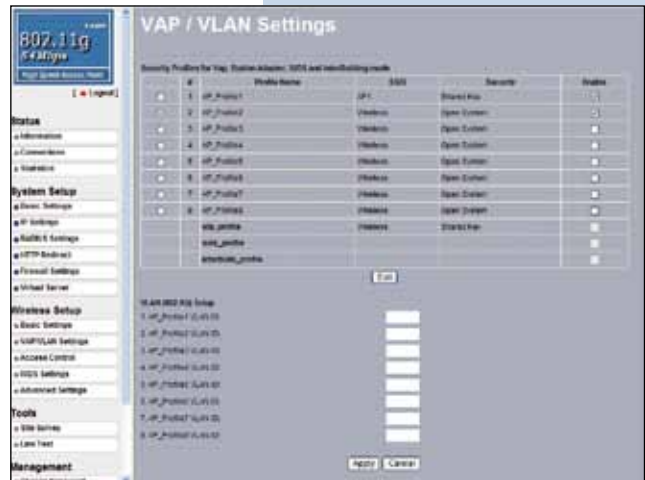


Figure 14

15

In the window shown in figure 15, proceed to change the administration password of the equipment. Even though it is not mandatory, we highly recommend that you change the administration password of your equipment. We must remind you to store it in a safe place to which you can have access in the event that you forget it. If you lose it, you must reset the equipment to factory values and lose any setup you have made. Please use for this the 123 manual on how to reset to factory values, document: **LP348_M123_ENC01W**.

In order to change the password, please select option: **Change Password**, located in the menu: **Management** as shown in the figure 15.



Figure 15

16

In the window shown in figure 16, input in: **Current Password** the old password, in: **New Password**, the new password you want to use, in the field: **Repeat New Password**, do as indicated and the select: **Apply**.



Figure 16