

LP-349 Setup 123 Manual.

LP349_M123_END01W



LP-349 Setup 123 Manual.



The following Setup 123 Manual will guide you on how to setup and mount your LP-349. It is highly recommended that configuration is preceded to physically mounting it. For additional information, please review the Installation Guide included in the CD or by downloading it from the page: www.lanpro.com.

1

Please check the package contents compared to the parts shown in figure 1.



Figure 1

2

Preparation of the wall or mast mounting base.

- a Proceed to fix the base to the wall (See figure 2) or to the mast (Please see figures 3 and 4).



Figure 2



Figure 3



Figure 4

- b Proceed to turn the radio over, in order to place the base on the back of the radio as shown in figure 5 and 6.



Figure 5

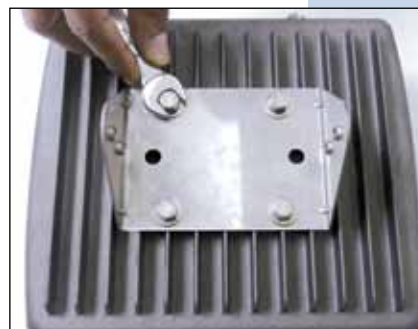


Figure 6

- c Proceed to join the bases and insert the corresponding screws and washers, as shown in figures 7 and 8.



Figure 7



Figure 8

3

Cable preparation for powering the LP-349 with PoE injector.

- a The recommended cable is the LP-214502 Outdoor Cat5e Cable by LanPro, and should be prepared as per the proper wiring standard used in the downstream hardware. If grounding standards are stringent, cable should be of the braided type and the braid connected at the shielded RJ-45 plug. Figures 9a and 9b show the two possible schemes used for sealing the RJ-45 connector against moisture.



Figure 9a



Figure 9b

4

Antenna connection. Fix the antenna as shown in the antenna instructions. Use the proper RF cable, screw the antenna connector to a surge arrester like the LP-G11 from LanPro, and continue from the surge arrester to the LP-349 N connector with another RF cable. Figures 10 show the details.



Figure 10

Please take the following precautions:

- a The connector shall be oriented as shown in figure 10.
- b Utilization of vulcanizing tape is mandatory to ensure proper sealing against moisture.
- c The recommended RF cables is the LP-C400 from LanPro.
- d Don't forget to install a surge arrester with proper grounding to the nearest buried grounding copper bar.
- e Remember to ground the radio following your country regulations.
- f ***Never turn the radio on without the antenna correctly connected or you will certainly damage the output stage.***

5

Now proceed to connect the cable prepared in paragraph 3 to the LP-349 with the other end to the PoE injector (To Odu port). Please see figure 11.



Figure 11

6

Connect a patch cord from the Switch or PC to the Injector port (To Ethernet) and connect the power input to the PoE injector as shown in figures 12.

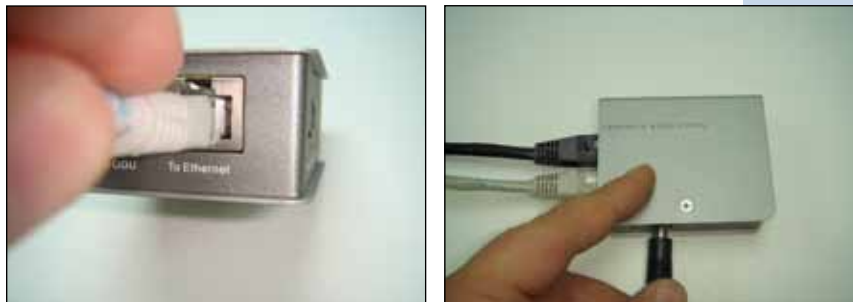


Figure 12