

**LP-348 123 Manual in Client Mode.**

LP348\_M123\_ENB01W



**LP-348 123 Manual in Client Mode.**

The following Instruction Manual will guide you on how to configure the LP-348 in Client Mode.

**1**

Once the Setup 123 Manual has been executed, proceed to configure it by first connecting the UTP cable that comes from the LP-348 to the To **Odu** port of the PoE Injector furnished with the radio as shown in figure 1.



Figure 1

**2**

Connect an UTP cable from the **To Ethernet** port of the PoE injector to the Switch or PC as shown in figure 2.



Figure 2

**3**

Connect electric power to the PoE injector as shown in figure 3.



Figure 3

**4**

Please go to your network card properties window and select: **Internet Protocol**, then select: **Properties**, as shown in figure 4.

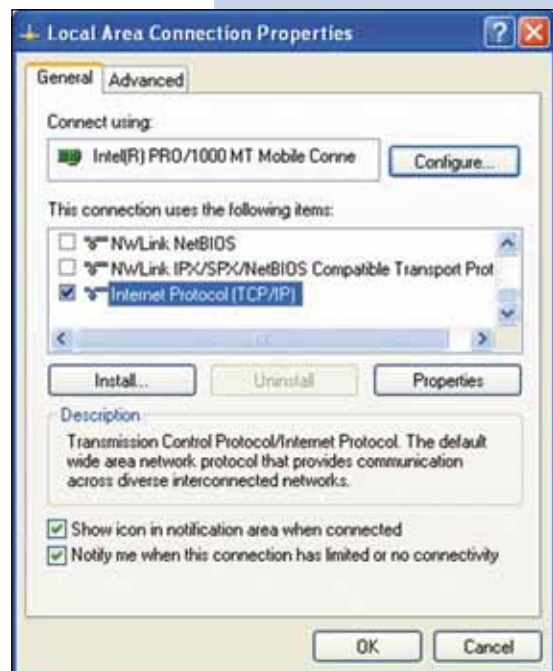


Figure 4

## 5

In the window shown in figure 5, select: **Use the following IP address** and input an IP address in the range of IP set by default of the LP-348. In this example, we have selected address: 192.168.1.201, the LP-348 has a default address of 192.168.1.1, input 255,255,255,0 in: **Subnet Mask**, in: **Default gateway** input the destination router address, in: **Preferred DNS Server** you must input the **DNS** address of your service provider or the IP address of your destination router, the one that provides the Internet Service, this is will route any corresponding queries to the router of the destination network.

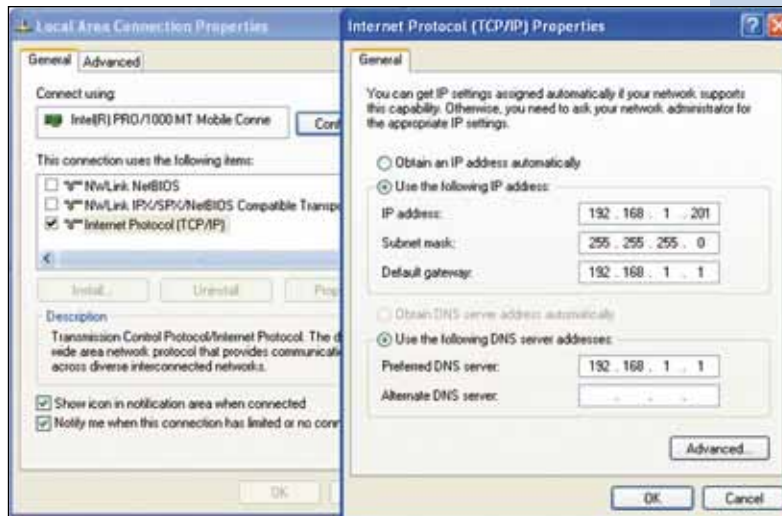


Figure 5

## 6

Please open your preferred browser and input the default address: 192.168.1.1, please see figure 6.

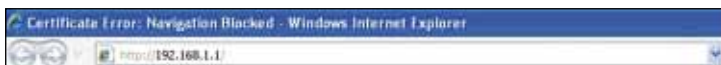


Figure 6

## 7

In the certificate validation window shown in figure 7, please accept by selecting: **Continue to this website (not recommended)**.



Figure 7

## 8

In the window shown in figure 8, input the word **admin** in: **Name** and the word: **password** in: **Password** and then select: **Login now**.

Figure 8

## 9

Then, as shown in figure 9, please proceed to change the IP address of the equipment. In this example, the LP-348 will connect as a Client of another LP-348 whose IP address is: 192.168.1.1 and which has more than one VAP already configured. For changing the IP address, proceed to select: **IP Settings** in the menu: **System Setup**, then change the IP address and select: **Apply**. The equipment will reboot and you will have to access it again through the new IP address.

Figure 9

## 10

In the window shown in figure 10, please proceed to select: **Basic Settings** in the menu: **Wireless Setup**. In: **Operation Mode** select: **Station Adapter** and then select: **Apply**.

Figure 10

11

In the window shown in figure 11, in the menu: **Tools**, proceed to select: **Site Survey**, locate the network you wish to connect to, then select it and click on: **Select**.

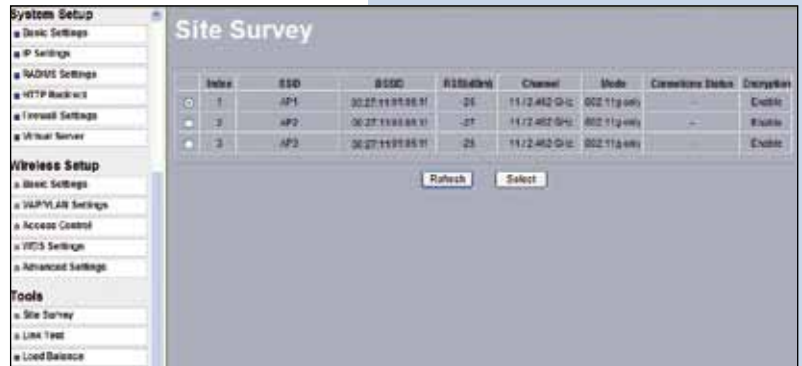


Figure 11

12

In figure 12, the network will appear highlighted in yellow color indicating that it was selected.

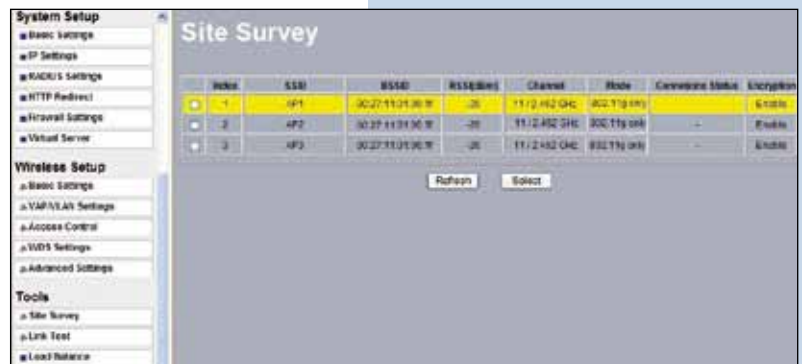


Figure 12

13

In the window shown in figure 13, you will configure the security, this will depend on the already established security in the **AP** against which it will connect. In this example it is WEP, in the menu: **Wireless Setup**, select: **VAP-VLAN Settings**, select: **sta\_profile** and then select: **Edit**.



Figure 13

## 14

In this example, we will generate the same keys of the **AP** and will establish the same ways of authentication and encryption. In order to do this, in figure 14, in mode of authentication with: **Shared Key**, in: **Data encryption** we will select: **64 bits WEP**, then we must input in **Passphrase**: the same used in the **AP**, then we will select: **Generate Keys**, in this way we will generate the same keys in the Client LP-348, then we will select: **Key 1**, which is the active one in the **AP**, then we will select: **Apply**.



Figure 14

## 15

In this case, a new message will be prompted, (See figure 15), with the information, that will indicate you the keys that apply for all the security profiles, then select: **OK**.

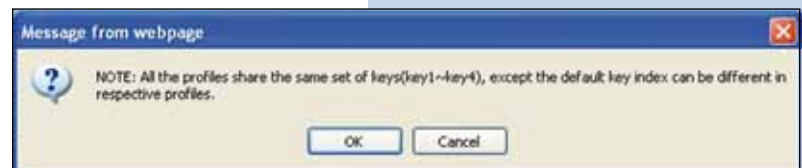


Figure 15

## 16

Please wait for about 30 seconds and verify the equipment connectivity, in order to do this:

- a Send a **PING** to the destination **AP**, (Please see figure 16a).

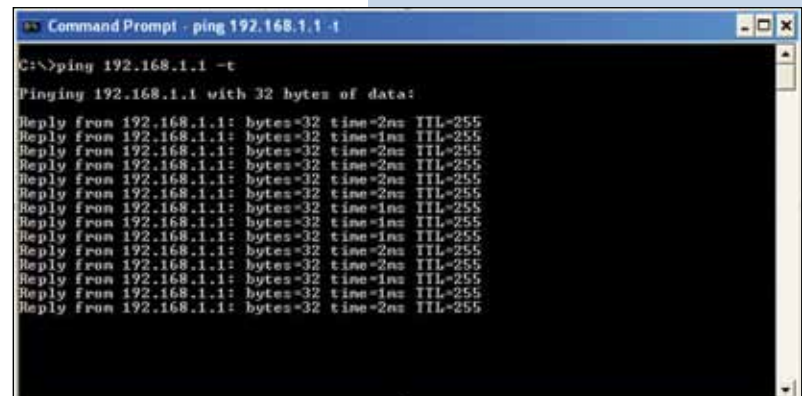


Figure 16 a



b Enter in the **AP** and verify option: **Connections** that the LP-348 client is connected. Please see figure 16b.



Figure 16 b

17

In the window shown in figure 17, proceed to change the administration password of the equipment. Even though it is not mandatory, we highly recommend that you change the administration password of your equipment, we must remind you to store it in a safe place to which you can have access in the event that you forget it. If you lose it, you must reset the equipment to factory values and lose any setup you have made. Please use for this the 123 manual on how to reset to factory values, document: **LP348\_M123\_ENC01W**.

In order to change the password, please select option: **Change Password**, located in the menu: **Management** as shown in the figure 17.



Figure 17

18

In the window shown in figure 18, input in: **Current Password** the old password, in: **New Password**, the new password you want to use, in the field: **Repeat New Password**, do as indicated and the select: **Apply**.



Figure 18