

# LP-289ai 123 Configuration Manual in Client Mode.

LP289ai\_M123\_ENB02W



## LP-289ai 123 Configuration Manual in Client Mode.



This manual will help you configure the LP-289ai in Client Mode.

**1**

Once the 123 Setup Manual is executed, you can proceed to configure the equipment by first connecting the cable included in the box with the LP-289ai to the port: **To Odu** located in the PoE injector supplied as shown in figure 1.



Figure 1

**2**

Connect the port: **To Ethernet** to the switch or PC as shown in figure 2.



Figure 2

**3**

Connect power to the PoE as shown in figure 3.



Figure 3

**4**

Please go to your NIC Card properties and select: **Internet Protocol**, then select: **Properties**, as shown in the window of figure 4.

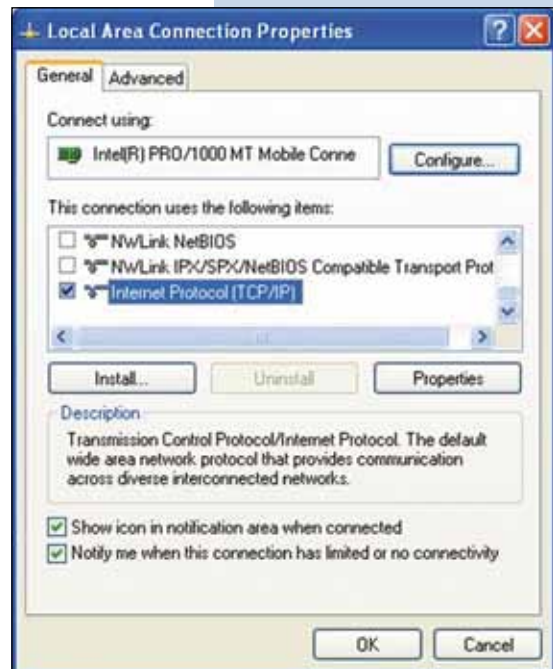


Figure 4

## 5

In the window shown in figure 5, select: **Use the following IP address** and next, input a IP address in the default range of the LP-289ai. In this example, we have selected address 192.168.1.201, the LP-289ai has a default address of 192.168.1.1, input now in: **Subnet mask** 255.255.255.0 and in the: **Default gateway** the destination router address; in the: **DNS** you should input your Service provider's **DNS** or the destination router IP address which will provide you with internet service, this will permit any queries to reach the router of the destination network.

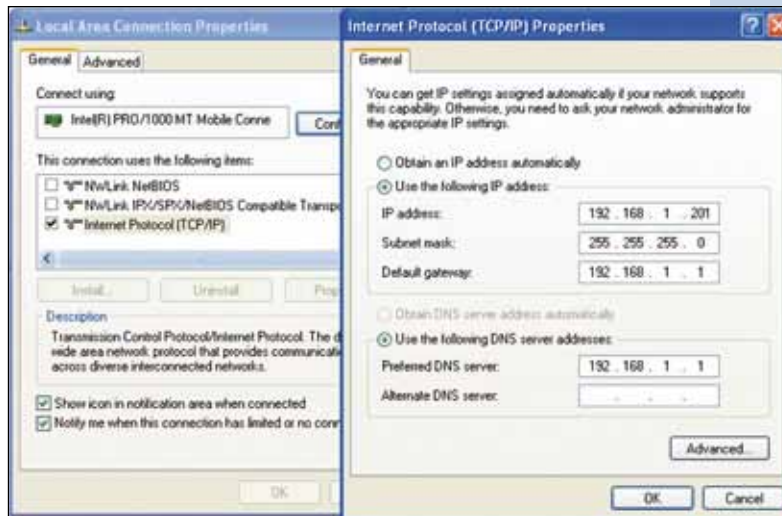


Figure 5

## 6

Open your preferred browser and input the default address: 192.168.1.1, please see figure 6.



Figure 6

## 7

In the certificate validation window shown in figure 7, accept to continue to website.



Figure 7

## 8

In the window shown in figure 8, in: **Name** input: **admin** and in: **Password**, input: **password**.

Figure 8

## 9

In the window shown in figure 9, proceed to change the equipment's IP, in this example, the LP-289ai is going to be a Client of another LP-289ai whose IP address is: 192.168.1.1 and has more than one VAP already configured. In order to change the IP, proceed to select: **IP Settings**, in the menu: **System Setup**, change the IP address and select: **Apply**. The equipment will reboot and you will have to access it with the new IP address.

Figure 9

## 10

In the window shown in figure 10, proceed to select: **Basic Settings**, in the menu: **Wireless Setup**, in: **operation mode** select: **Station Adapter** and then select: **Apply**.

Figure 10

11

In the window shown in figure 11, in the menu: **Tools**, proceed to select: **Site survey**, locate the network you wish to connect to, then select it and click on: **select**.

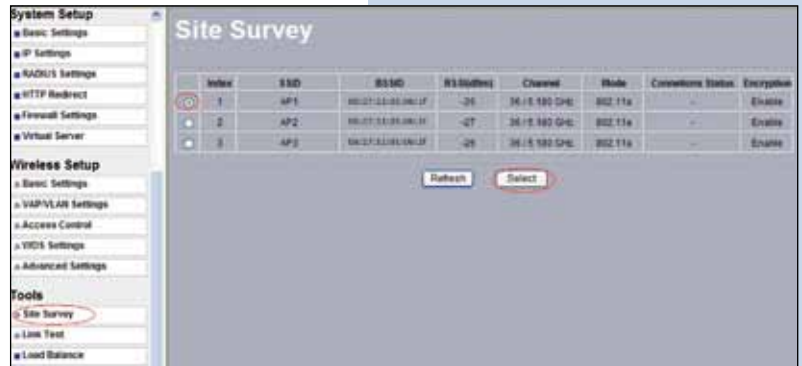


Figure 11

12

The selected one will be highlighted as shown in figure 12.

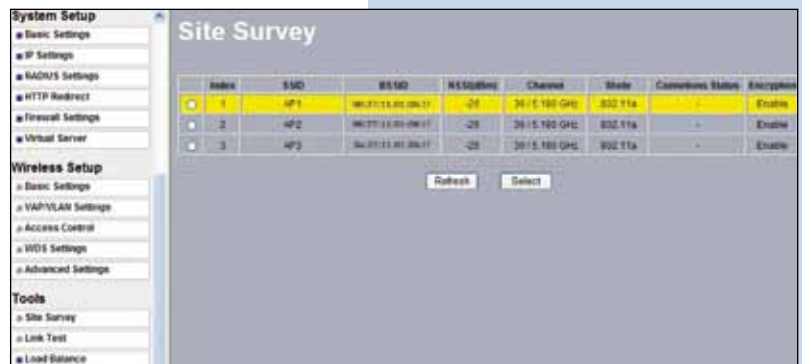


Figure 12

13

In the window of figure 13, you should configure the security, this will depend on the security established already for the AP to which you will connect, in this example is WEP. In the menu: **Wireless Setup**, select: **VAP-VLAN Settings**, select: **sta\_profile** then select: **Edit**.



Figure 13

## 14

In this example we will generate the same keys used in the AP and will establish the same authentication and encryption mode. In order to do this, we must select in figure 14, in authentication mode by selecting: **Shared key** and in encryption: **64 bits WEP**, we will input the passphrase used in the AP and next select: **Generate keys**. With this procedure the same keys will be generated for the Client LP-289ai. Then we will select Key 1 which is active in the AP and finally select: **Apply**.



Figure 14

## 15

In this case a message will pop-up, shown in figure 15 with the information indicating that the keys apply to all security , then select: **OK**.

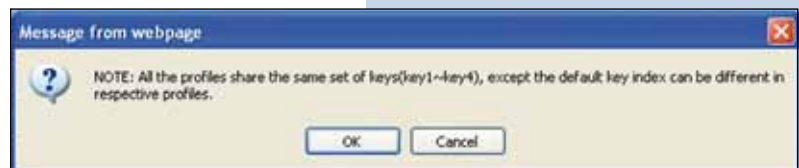


Figure 15

## 16

Wait for 30 seconds and verify the connectivity of the equipment. In order to do this you can:

- a) Send a Ping to the destination AP , see figure 16a.

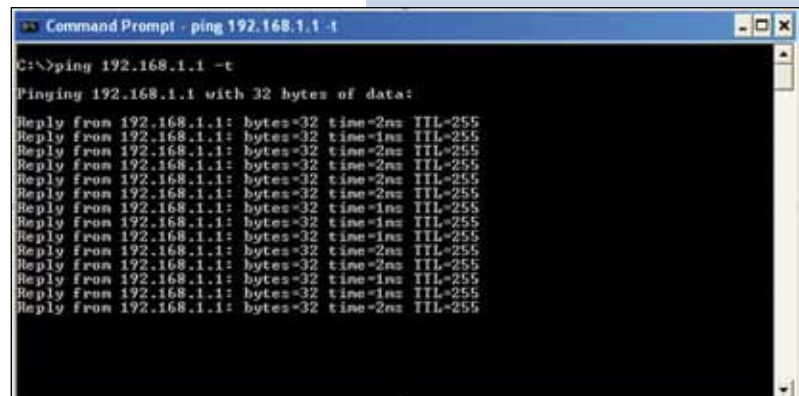


Figure 16 a

- b Enter the AP and verify option: **connections** that the Client LP-289ai is already connected, see figure 16b.

Station ID	MAC Address	IP Address	Status	Signal Level	Received Packets	Transmitted Packets
1	98-77-11-81-08-3f	192.168.1.201	Associated	67.4 % (-30 dBm)	205	248

Figure 16 b

## 17

In the window of figure 17, proceed to change the administration password. Even though it is not mandatory, we highly recommend it. Please take the precaution to save it in a safe place because if you lose it you will have to take the equipment to factory values by opening the equipment, in which case you lose the warranty. In order to change the password, select option: **change password** in the menu: **Management**, as shown next.



Figure 17

## 18

In the window shown in figure 18, input in: **Current Password** the old one and in: **New Password** the new password, repeat it in the field: **Repeat New Password** then select: **Apply**.



Figure 18