

**123 Manual, LP-288ai V2.0 TURBO OFDM Compact Outdoor Radio with Throughput Booster,
FIRMWARE UPDATE PROCEDURE TO THE VERSION V2.0.3B2P1.**

LP288aiV23B2_M123_ENE01W

**123 Manual, LP-288ai V2.0
TURBO OFDM Compact Outdoor
Radio with Throughput Booster,
FIRMWARE UPDATE PROCEDURE
TO THE VERSION V2.0.3B2P1.**



IMPORTANT! WARNING!



It is important to emphasize that for the firmware update you have to properly follow the steps below, because a wrong update translates into irreversible damage to the equipment and it is not covered by our guarantee. The firmware updating is the client responsibility, so please read the following instructions very carefully:

- You must be connected to the firmware through the physical network, not wirelessly.
- Do not reboot the equipment manually during the process, and do not close the web browser until it is finished.
- Do not change pages or make any other process in the computer. Remember to close all the programs before starting the firmware update.
- Do not interrupt the supply of electric power in the equipment.
- In case you make the firmware update through a mobile device, please remember you must be connected to electric power.
- The file upload of the firmware shall be done in the order specified.
- Do not forget to make a security copy of your equipment configuration, both digital and written.
- Once you have the firmware updated, it will return to its factory default values.
- In some updates is necessary to reboot the firmware once the process is finished. This will be explained in detail in the corresponding document about firmware update.
- If your equipment is part of a wireless network, you shall verify the firmware compatibility with other equipment and also update all equipment of this model with the same firmware version.
- It is recommended to check the reference document of the firmware in order to know what update is implied in it and its usefulness for your platform, because there are firmwares which are not compatible among them.
- LanPro LatAm becomes free of any responsibility relative to the incorrect management and/or firmware update. If you have any doubt we recommend you to contact the LanPro LatAm Support Department through the web page www.lanpro.com in MyLanPro section or Support.
- We invite you to register in our support web page <https://www.lanpro.com/support/register.asp>.
- Once you have updated and rebooted the firmware, we highly recommend you to return it to its factory default values in the firmware option intended for this purpose or make it through the physical procedure.
- Do not forget to check which the default values of each firmware are in order to access it once the process is made.

Firmware Update Procedure to the Version V2.0.3B2P1

Prior to updating this firmware, you must download the corresponding file, decompress it, and save it in a folder properly identified.

1

Go to the properties of your network card and select **Internet Protocol (TCP/IP)/Properties**, as shown in **Figure 1**.

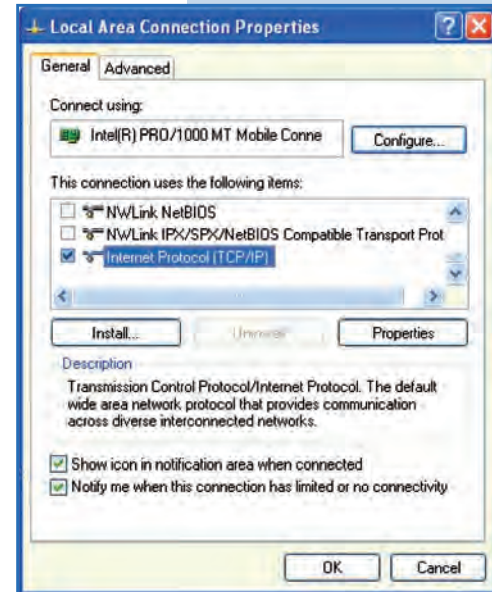


Figure 1

2

Select **Use the following IP address** and type an IP address in the LP-288ai IP range by default. For this example we have selected the 192.168.1.201 address, The LP-288ai has the 192.168.1.2 address by default. In **Subnet mask** type 255.255.255, as shown in **Figure 2**.

Once you have finished, select **OK** twice.

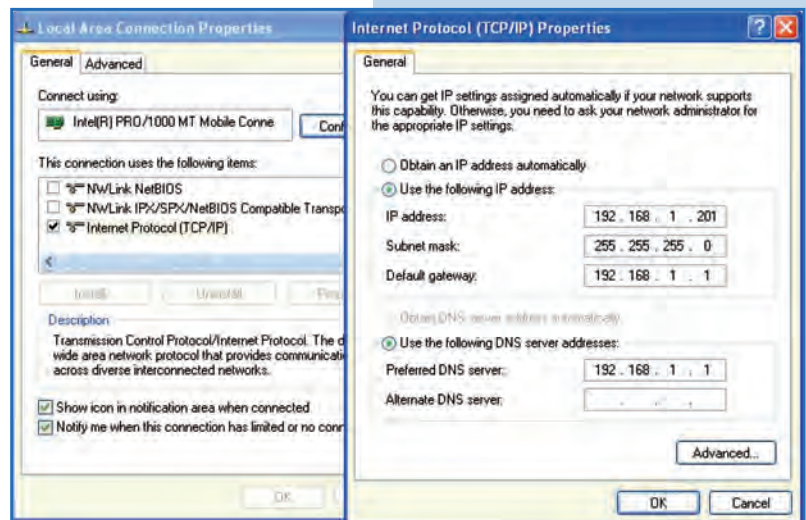


Figure 2

3

- a. Connect the cable as shown in **Figure 3a**.



Figure 3a

- b. Connect the POE as shown in **Figure 3b**.



Figure 3b

- c. Connect your PC or switch to the LP-288ai POE, as shown in **Figure 3c**.



Figure 3c

- d. Connect to electric power, as shown in **Figure 3d**.



Figure 3d

- e. Open the web browser of your preference and type the default address **192.168.1.2**, as shown in **Figure 3e**. If you have another address, type the appropriate one.

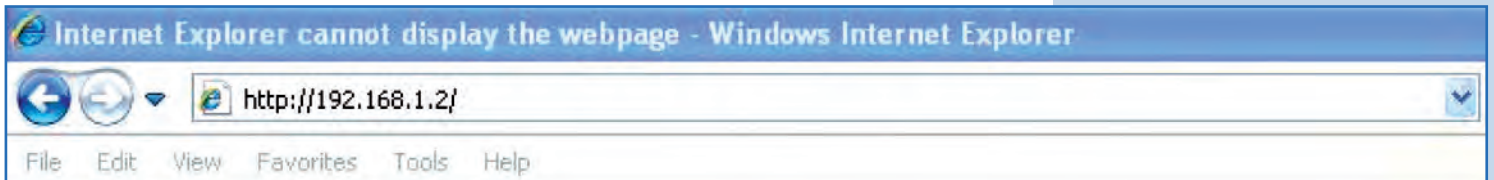


Figure 3e

- f. The equipment will request a user and a password. The LP-288ai has two user levels, one with all the privileges, which is **super** by default with **super** as password, and another with fewer privileges with **admin** as user and **admin** as password. Type **super** in user and password and select **OK**, as shown in **Figure 3f** (if you changed the passwords, use the appropriate ones).



Figure 3f

- g. In **Super User** window select **Super User/ Firmware Upgrade**, and then click on **Browse** in the right panel (as shown in **Figure 3g**) in order to find the file corresponding to the firmware **V2.0.3B2P1**.

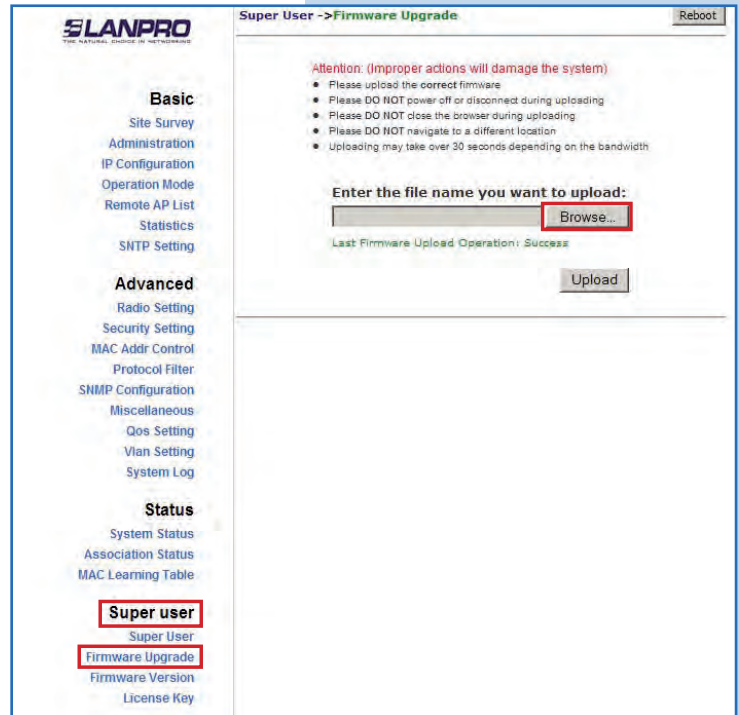


Figure 3g

- h. Locate the corresponding folder and file of the firmware **V2.0.3B2P** in the browser and select **OPEN**, as shown in **Figure 3h**.

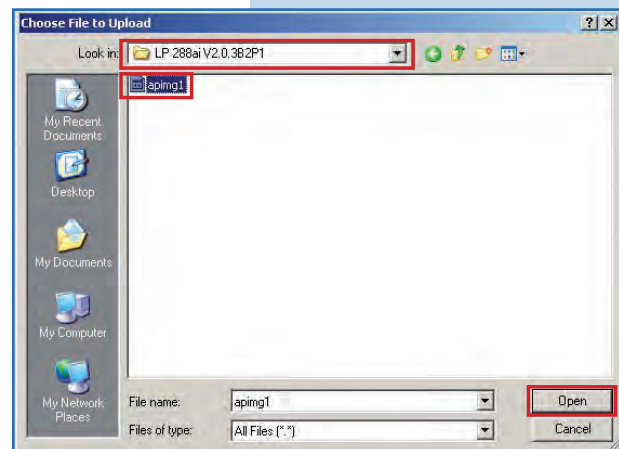


Figure 3h

4

Notice how the corresponding route to the location of the file is displayed. To start the update, select **Upload**, as shown in **Figure 4**. Remember that the process **cannot be canceled once you have started**.

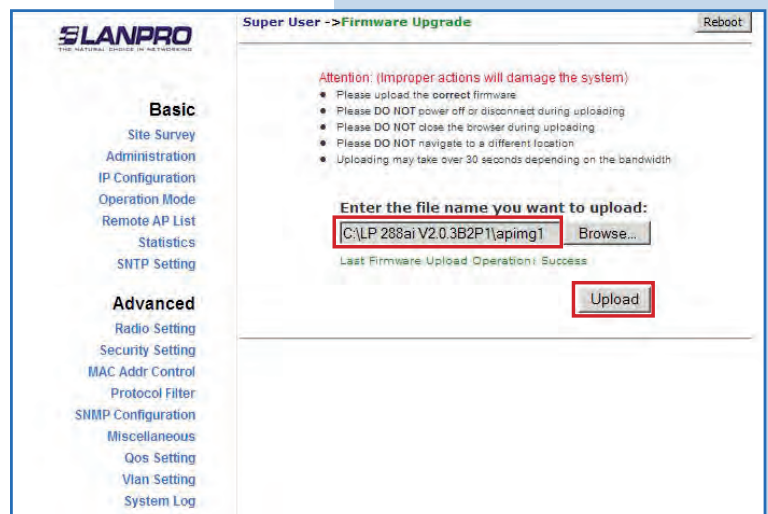


Figure 4

5

You will notice how the firmware is uploaded. In this moment you shall wait for the process to finish. Do not open any application. Be patient until it is finished, as shown in **Figure 5**.

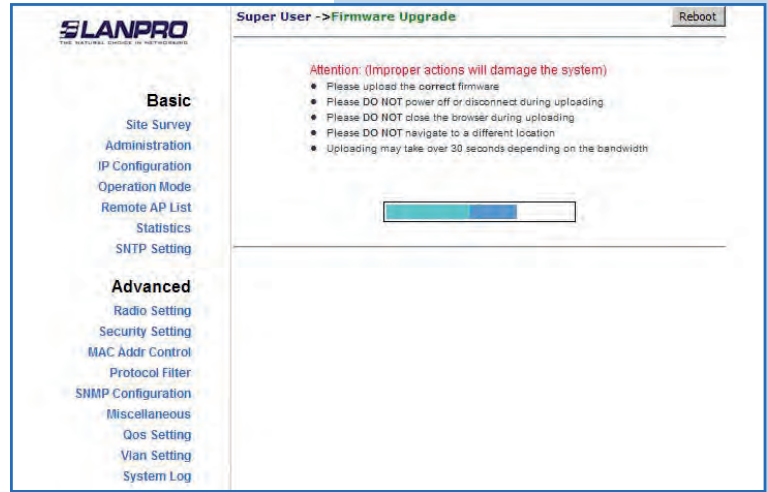


Figure 5

6

When the updating process is done, the following window will be displayed. Select **Back**, as shown in **Figure 6**.

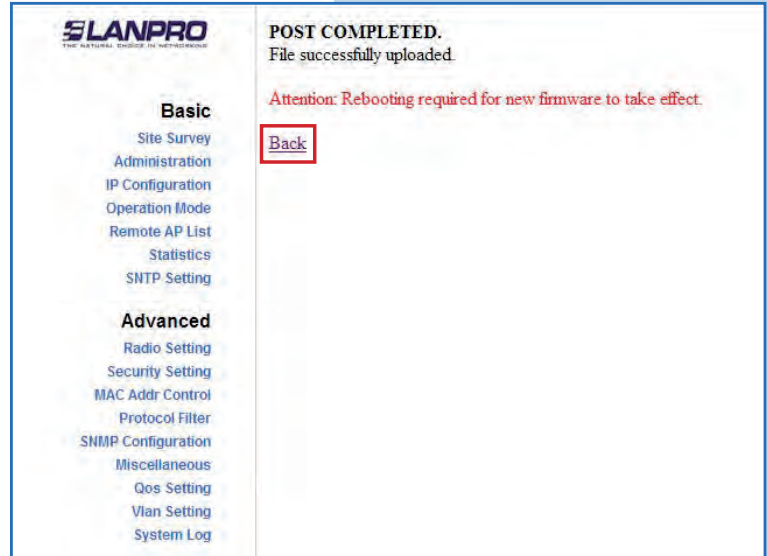


Figure 6

7

Proceed to select **Reboot**, as shown in **Figure 7**.

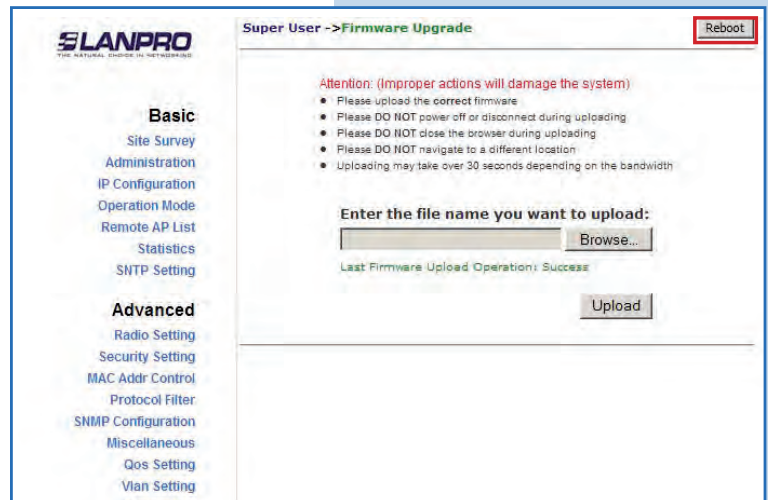


Figure 7

8

The counting of the rebooting process will start, as shown in Figure 8.

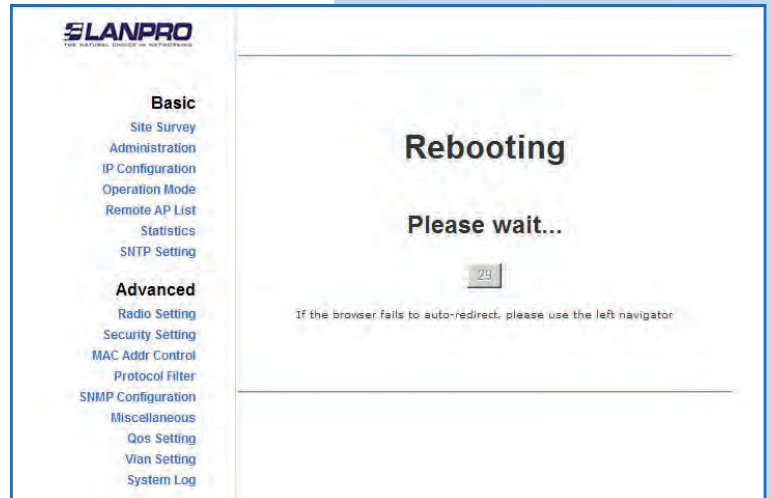


Figure 8

9

When the rebooting process is done you will see "System is Up", which indicates that the system is ready, as shown in Figure 9.

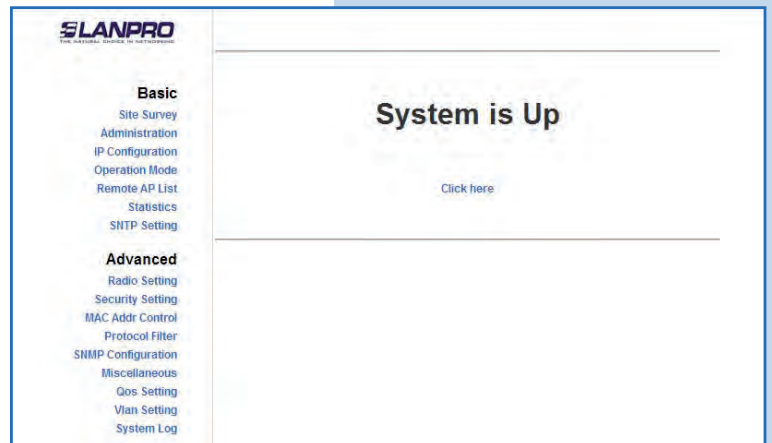


Figure 9

10

Now you must revert the firmware to its factory default values. Unlike previous firmware, this one has the characteristic that its IP by default is 192.168.1.20. To revert to default values, select **Miscellaneous** in **Advanced** menu and then click on **Factory Reboot**, as shown in Figure 10.

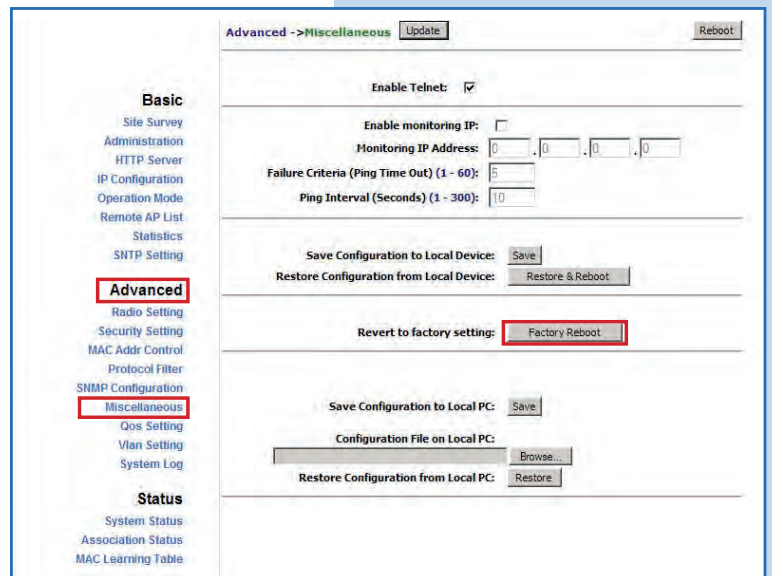


Figure 10

11

Select **OK** to confirm the action, as shown in **Figure 11**.

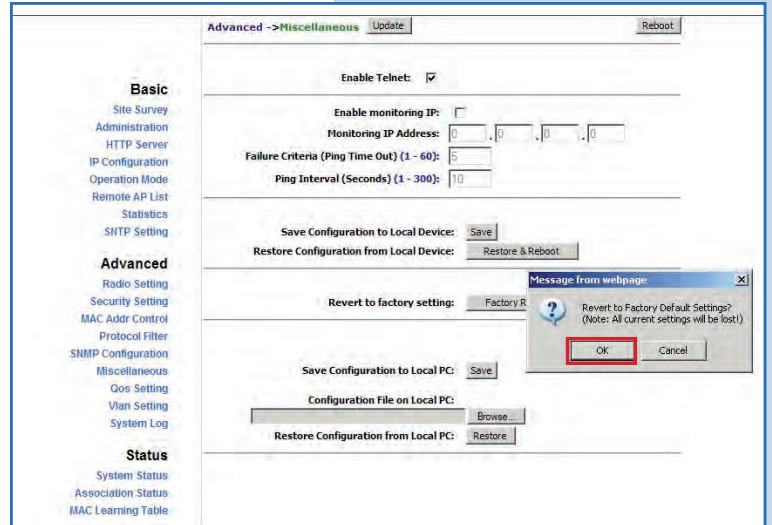


Figure 11

12

Once confirmed, the radio will be reverted to its factory default values. Wait for the equipment to reboot, as shown in **Figure 12**.

IMPORTANT: REMEMBER YOU MUST ACCESS IT THROUGH THE IP 192.168.1.20 ONCE FINISHED.

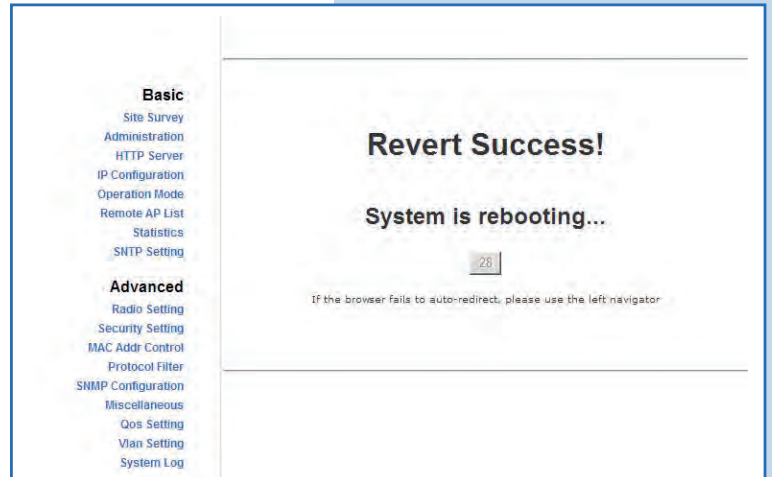


Figure 12

13

Enter the default IP address **192.168.1.20** in the browser, as shown in **Figure 13**.



Figure 13

14

The equipment will request a user and a password. The LP-288ai has two user levels, one with all the privileges, which is **super** by default with **super** as password, and another with fewer privileges with **admin** as user and **admin** as password. Type **super** in user and password and select **OK**, as shown in **Figure 14**.

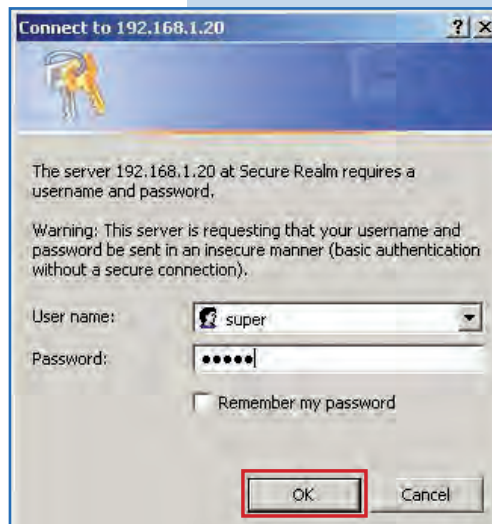


Figure 14

15

Now your equipment has the new firmware version. Proceed to configure it according to your requirements, as shown in **Figure 15**.

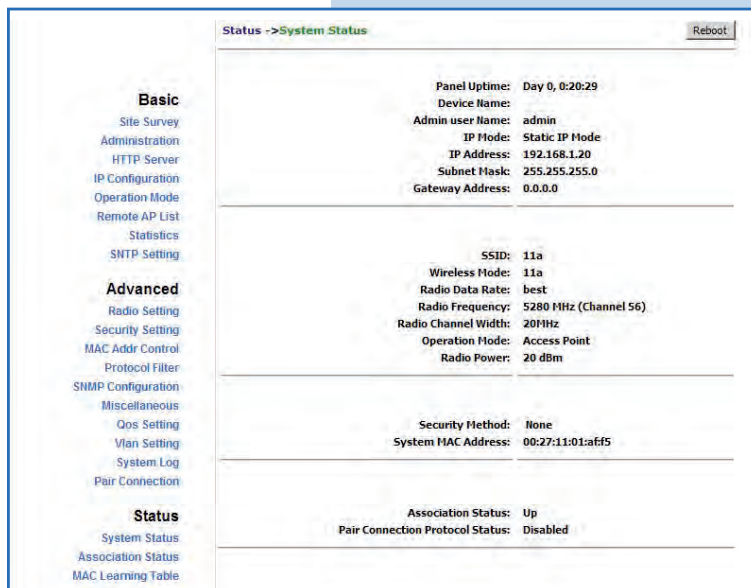


Figure 15