

**123 Manual, LP-288ai V2.0 TURBO OFDM Compact Outdoor Radio with Throughput Booster.  
INSTALLATION IN AP MODE WITH FIRMWARE V2.0.2B5P1**

LP288aiV22B5\_M123\_ENB01W



**123 Manual, LP-288ai V2.0  
TURBO OFDM Compact Outdoor  
Radio With Throughput Booster.  
INSTALLATION IN AP MODE  
WITH FIRMWARE V2.0.2B5P1**



**Important information:** For the LP-288ai V 2.0 equipment with firmware (V 2.0.2B5P1) it is only possible to connect other equipment with identical firmware. If you want to connect other equipment different from the LP-288ai V 2.0 AP with firmware (V 2.0.2B5P1), you shall substitute the firmware for the V 2.0.1B2P4 or V 2.0.3B5P0T2E1 version (Please see document: LP288aiV23B5\_M123\_ENB01).

**1**

Check the content of the box, as shown in **Figure 1**.



Figure 1

**2**

Prepare the cable with the connector, as shown in **Figures 2-1, 2-2 and 2-3**.

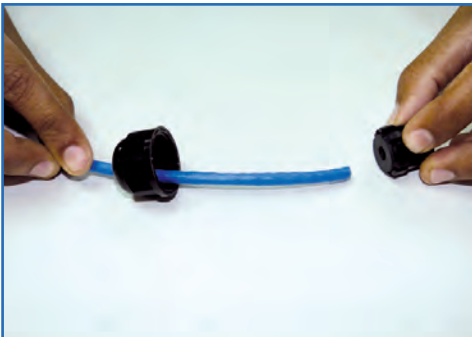


Figure 2-1



Figure 2-2



Figure 2-3

**3**

Connect the cable, as shown in **Figure 3**.



Figure 3

## 4

Connect the LP-288ai to the POE, as shown in **Figure 4**.



Figure 4

## 5

Connect your PC or switch to the POE of your LP-288ai, as shown in **Figure 5**.

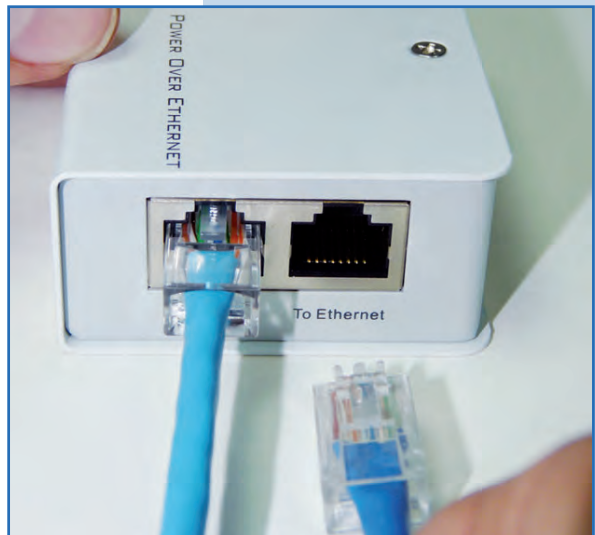


Figure 5

## 6

Connect to electric power, as it is shown in **Figure 6**.



Figure 6

## 7

Go to the properties of your network card and select **Internet Protocol (TCP/IP)** and then select **Properties**, as shown in **Figure 7**.

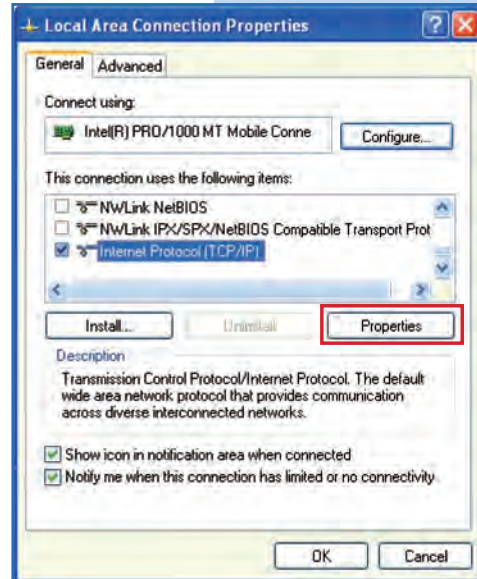


Figure 7

## 8

Select **Use the following IP address** and type an IP address in the LP-288ai IP range by default; for this example we have selected the 192.168.1.201 address. The LP-288ai has the 192.168.1.2 address by default. In **Subnet mask** type 255.255.255.0 and in **Default gateway** enter the address of the destination router. In the **DNS** you shall enter the DNS server, so the corresponding queries will be sent to the same DNS in the web, as shown in **Figure 8**.

Once you have finished, select **OK** twice.

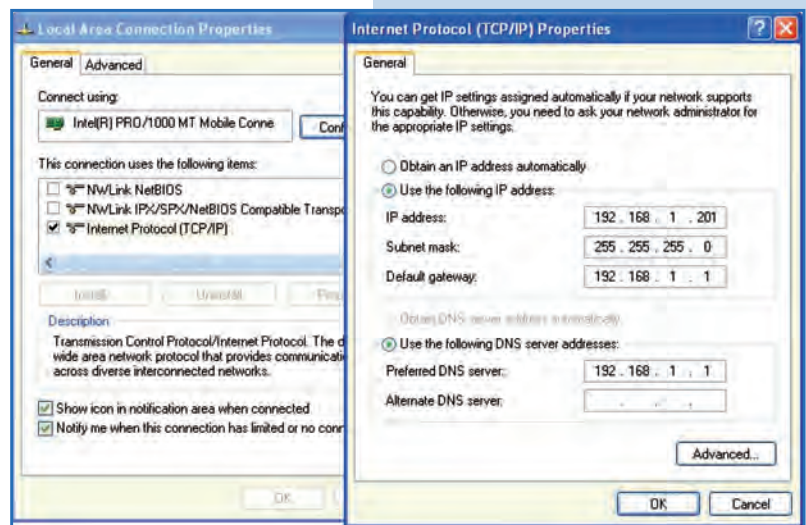


Figure 8

## 9

Open the web browser of your preference and type the default address **192.168.1.2** as shown in **Figure 9**.

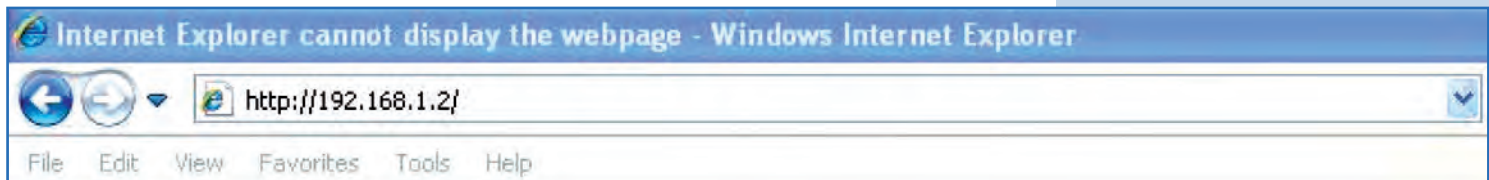


Figure 9



10

The equipment will request a user and a password. The LP-288ai has two user levels, one with all the privileges, which is **super** by default with **super** as password, and another one with fewer privileges with **admin** as user and **admin** as password. Type **super** in user and password and select **Ok**, as shown in **Figure 10**.

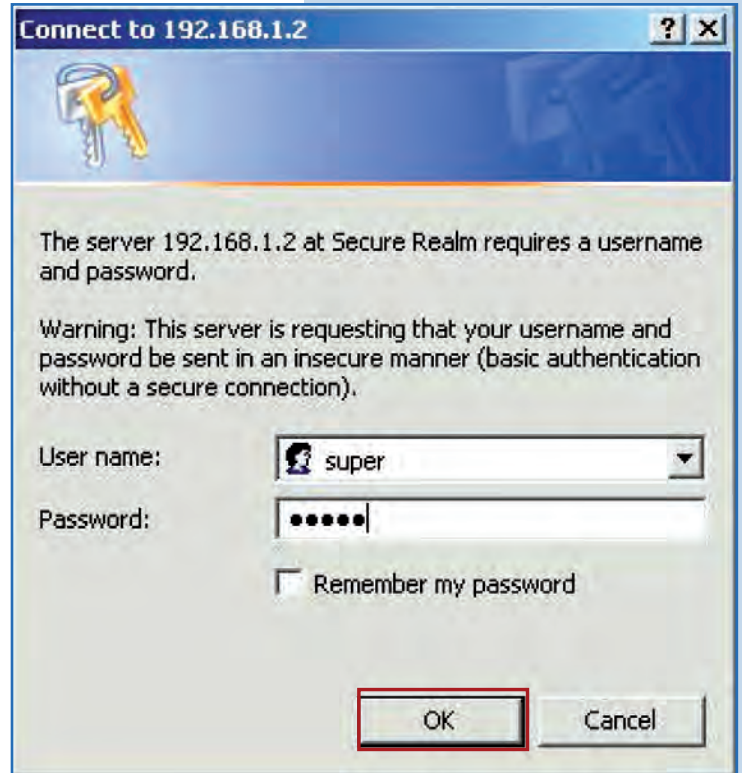


Figure 10

11

Select **Basic/Operation Mode**. Select **Master**, enter the name of your wireless network in **SSID** field. Uncheck **Suppress SSID** option if you want the AP not to be hidden. Select the channel in **Radio frequency** field (See Appendix 1), adjust the link distance in **Distance** (See Appendix 2), and select **Update**, as shown in **Figure 11**.

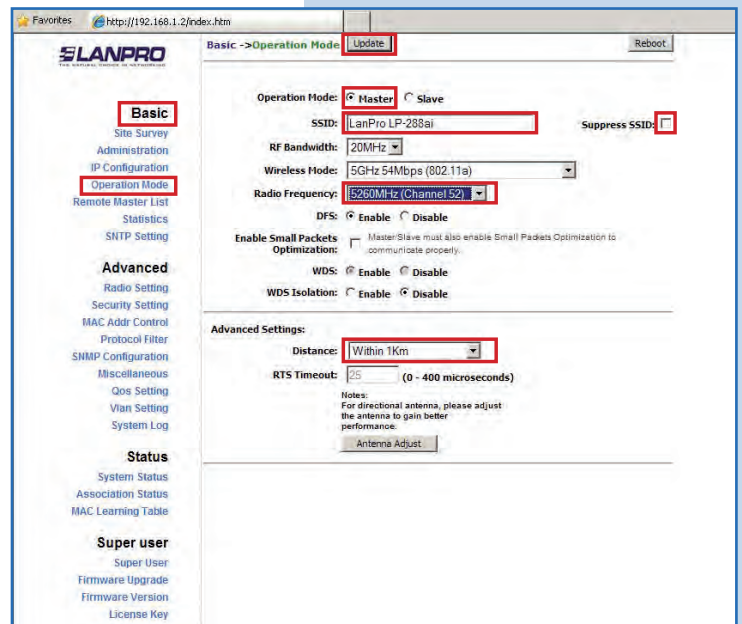
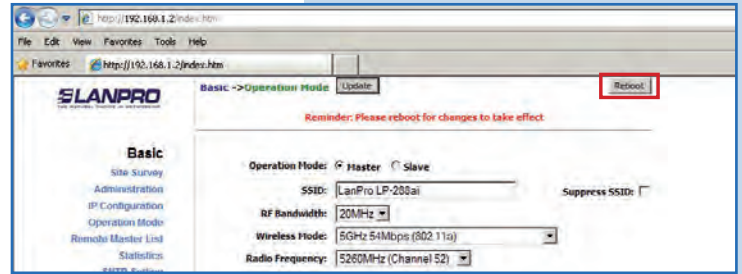


Figure 11

**12**

The equipment will save the changes, but they won't become effective until the equipment be rebooted. To do so select **Reboot**, as shown in **Figure 12**.



**Figure 12**

**13**

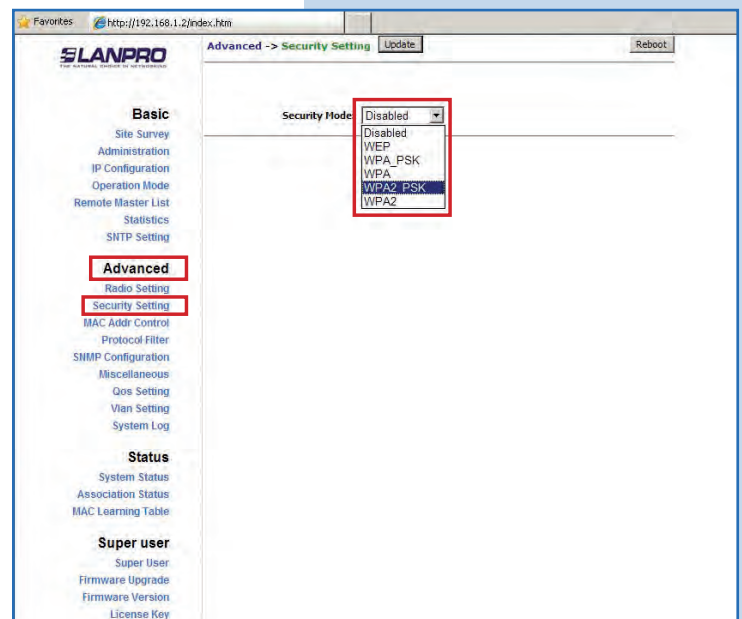
Next, a screen to indicate that the equipment is rebooting will be displayed, as shown in **Figure 13**.



**Figure 13**

**14**

Select **Advanced / Security Setting**. In **Security Mode** select the encryption mode. For security reasons we suggest **WPA2 PSK** mode as shown in **Figure 14**. Remember that for this firmware it is only accepted the connection of another LP288ai. Please check the **Important information** on pages 2 or 10.



**Figure 14**

**15**

Select the cipher type. This will depend on the condition mentioned before, as well as the encryption mode selected. In addition, you shall enter the encryption phrase you want and select **Update**, as shown in **Figure 15**.

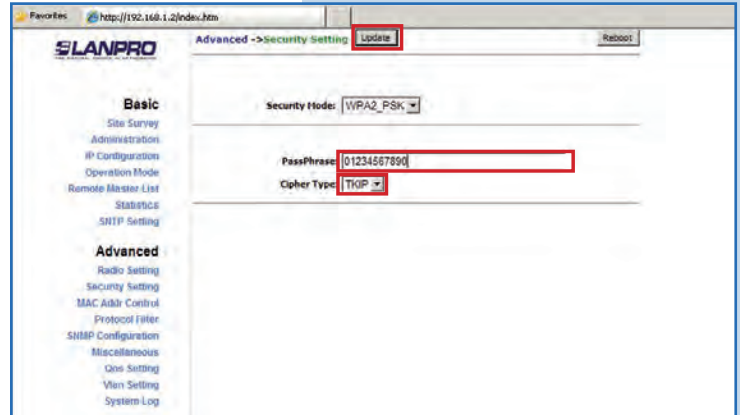


Figure 15

**16**

Once you have saved the changes, you must select **Reboot** so they can be effective, as shown in **Figure 16**.

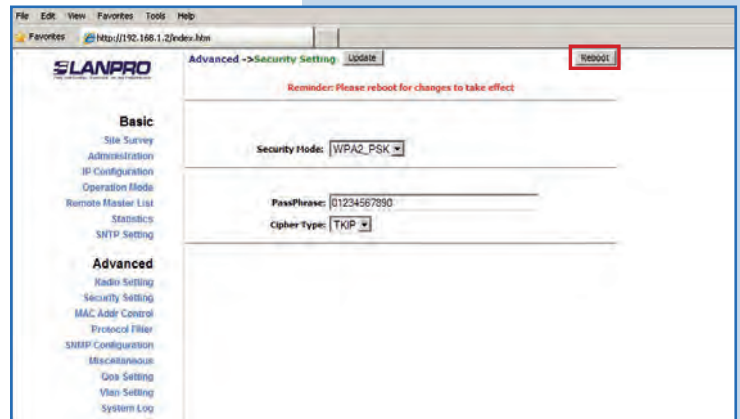


Figure 16

**17**

A screen indicating that the equipment is rebooting is displayed, as shown in **Figure 17**.



Figure 17

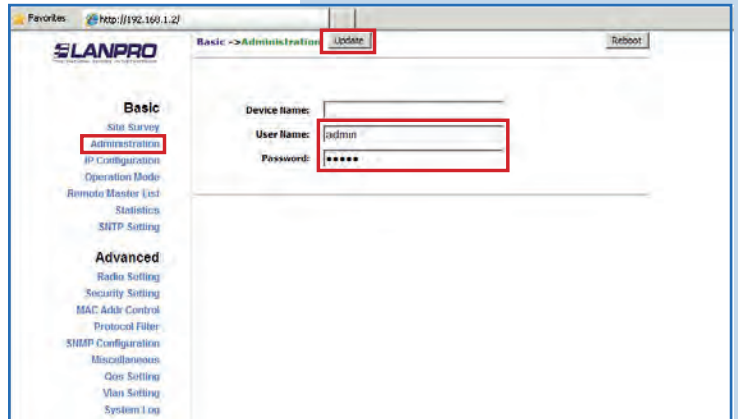
**18**

**Important suggestion (optional):**

Proceed to change the password of the users **admin** and **super** of your equipment.

To change the password of the user **admin**, select **Basic/Administration** and type the new password in the **password** box, then select **Update**, as shown in **Figure 18**.

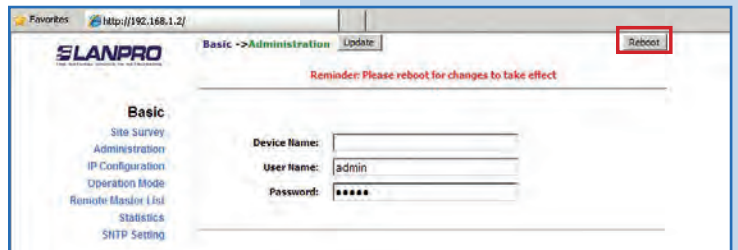
**Figure 18**



**19**

To make the changes effective, you must select **Reboot** as shown in **Figure 19**.

**Figure 19**



**20**

You may see the rebooting progress on the screen, as shown in **Figure 20**.

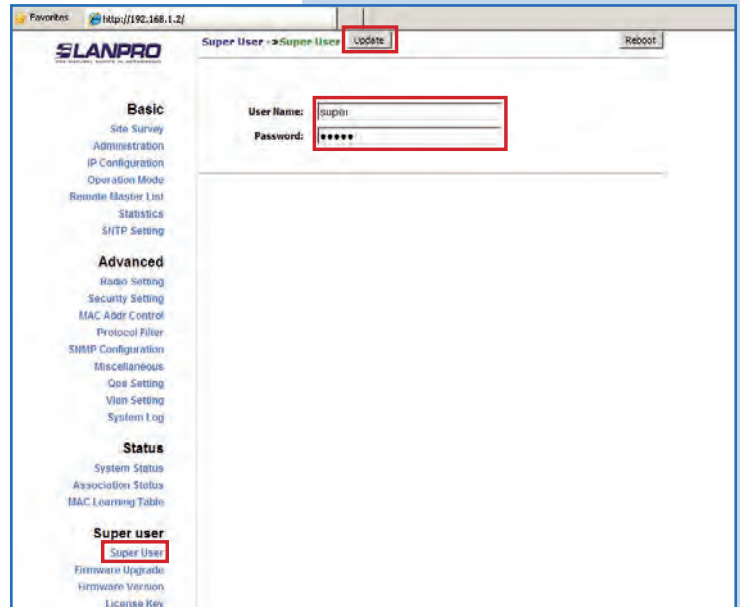
**Figure 20**





**21**

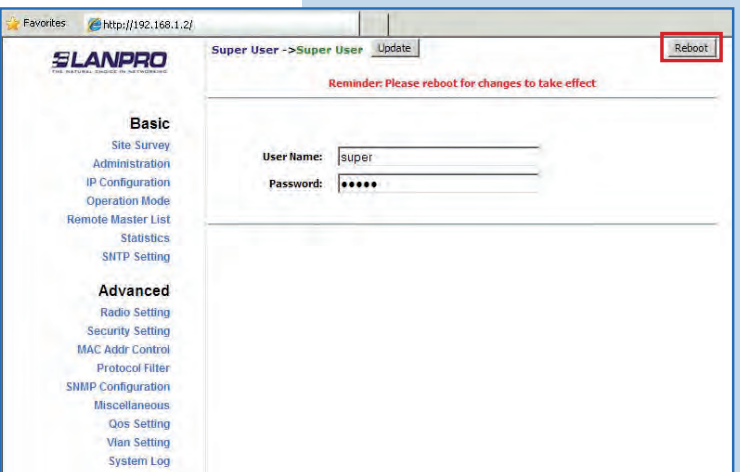
Proceed to change the password of the user **super**. Remember you have to be authenticated as user **super** to make this change. Select **Super User/ Super User** option and type the new password, select **Update**, as shown in **Figure 21**.



**Figure 21**

**22**

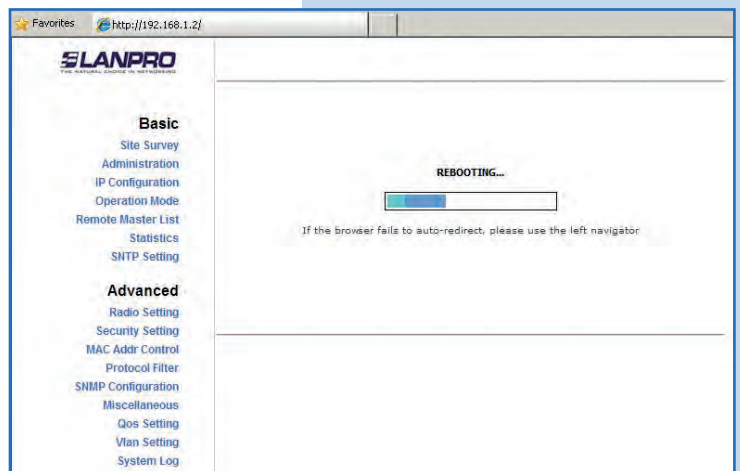
To make the changes effective, you must select **Reboot** as shown in **Figure 22**.



**Figure 22**

**23**

You may see the equipment is rebooting on the screen, as shown in **Figure 23**.

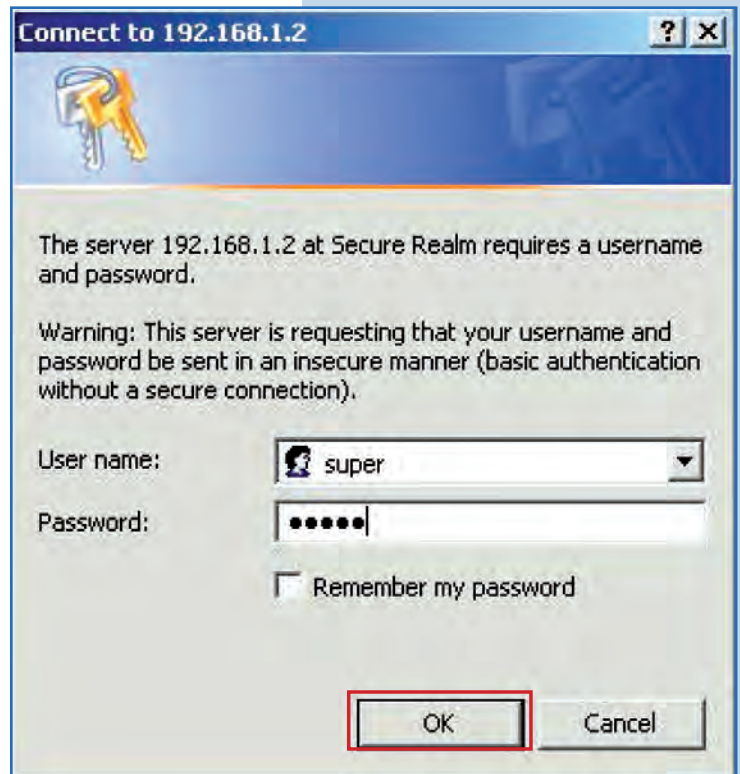


**Figura 23**

## 24

The equipment will request your user and password once again. Enter the value you changed and select **OK**, as shown in **Figure 24**.

Figure 24

**IMPORTANT NOTE:**

For the V.2.0.2.B5P1 version of the Firmware, the clients only can be LP-288ai of this firmware version.

If you want another type of clients to be connected to this AP, you shall make an update to the V 2.0.1B2P4 or V 2.0.3B5P0T2E1 version of the firmware.

**Appendix 1:** Consider that the correct selection of the frequency channel is a vital factor for your wireless network performance. The LP-288ai equipment operates in the ISM 5 GHz frequency band and it has more frequency channels which do NOT overlap each other (because of the spacing in frequency among channels). However, there is the possibility that where you are installing your wireless network other transmission sources in the 5 GHz band exist. As a consequence, the signal of your wireless network can be interfered by other devices if they operate in the same frequency channel in the 5 GHz band. To avoid this, you can make a network survey through the **Site Survey** option and detect which frequency channels are being used in the site. The idea is to select or configure your LP-288ai in the frequency channel that you see clear or not used. In the unlikely event that all the channels are busy, it is recommended to use the frequency channel which transmission power is the lowest in the site.

**Appendix 2:** In step 11, **Advanced Settings / Operation Mode**, there are several options for the **Distance** parameter. This one allows the user to select the approximate distance between the *AP* device and the *Slave* device (or between *AP* devices). In case you select the proper distance, the LP-288ai will handle the latency on a long distance path. This allows to reduce the error rate and increase the transmission speed.