

**123 Manual, LP-288ai V2.0 TURBO OFDM Compact Outdoor Radio with Throughput Booster.
INSTALLATION IN CLIENT MODE WITH FIRMWARE V2.0.1B2P4**

LP288aiV21B2_M123_ENC01W



**123 Manual, LP-288ai V2.0
TURBO OFDM Compact Outdoor
Radio with Throughput Booster.
INSTALLATION IN
CLIENT MODE WITH
FIRMWARE V2.0.1B2P4**

1

Check the content of the box, as shown in **Figure 1**.

Figure 1



2

Prepare the cable with the connector, as shown in Figures 2-1, 2-2 and 2-3.

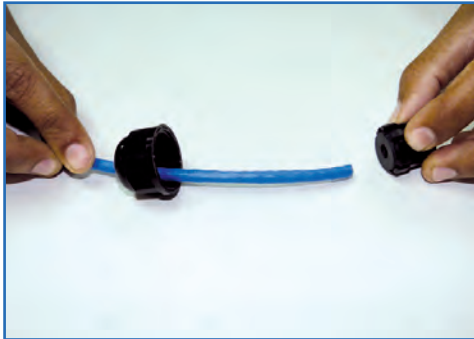


Figure 2-1



Figure 2-2



Figure 2-3

3

Connect the cable as shown in **Figure 3**.

Figure 3



4

Connect the POE as shown in **Figure 4**.

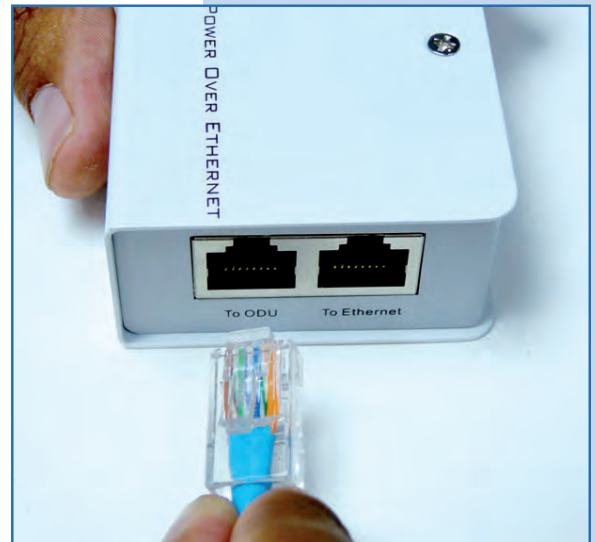


Figure 4

5

Connect your PC or switch to the LP-288ai POE, as shown in **Figure 5**.

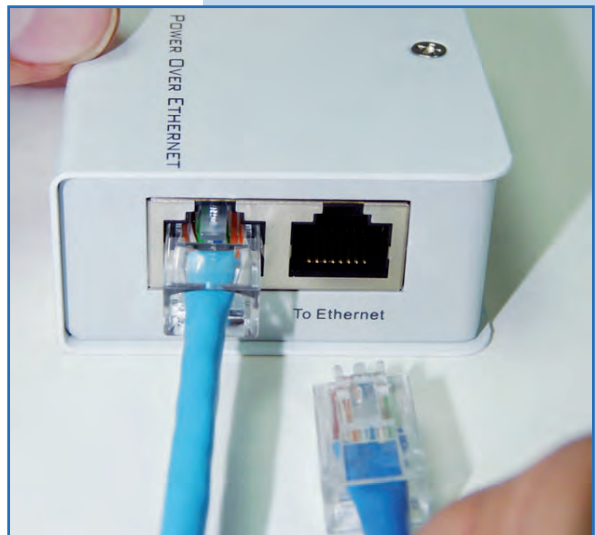


Figure 5

6

Connect to electric power, as shown in **Figure 6**.



Figure 6

7

Go to the properties of your network card and select **Internet Protocol, Properties**, as shown in **Figure 7**.

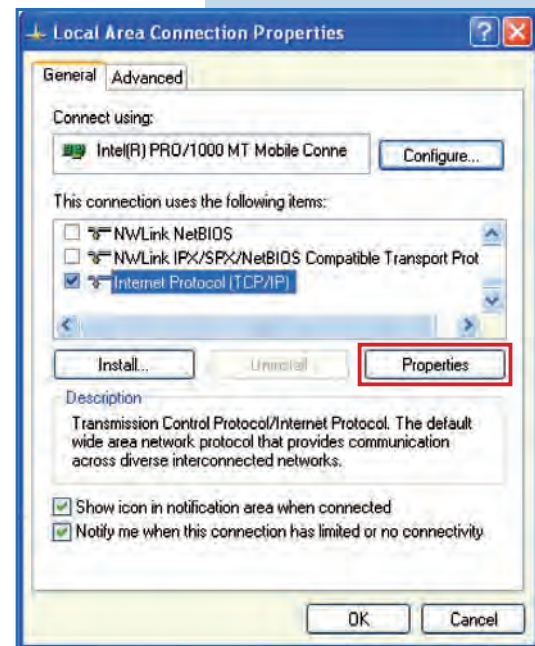


Figure 7

8

Select **Use the following IP address** and type an IP address in the LP-288ai IP range by default. For this example we have selected the address **192.168.1.201**, The LP-288ai has 192.168.1.2 by default. In **Subnet mask** type **255.255.255.0**, in **Default gateway** the destination router address and you also shall enter the **DNS** so the corresponding queries can be sent to it in the network, as shown in **Figure 8**.

Once you have finished, select **OK** twice.

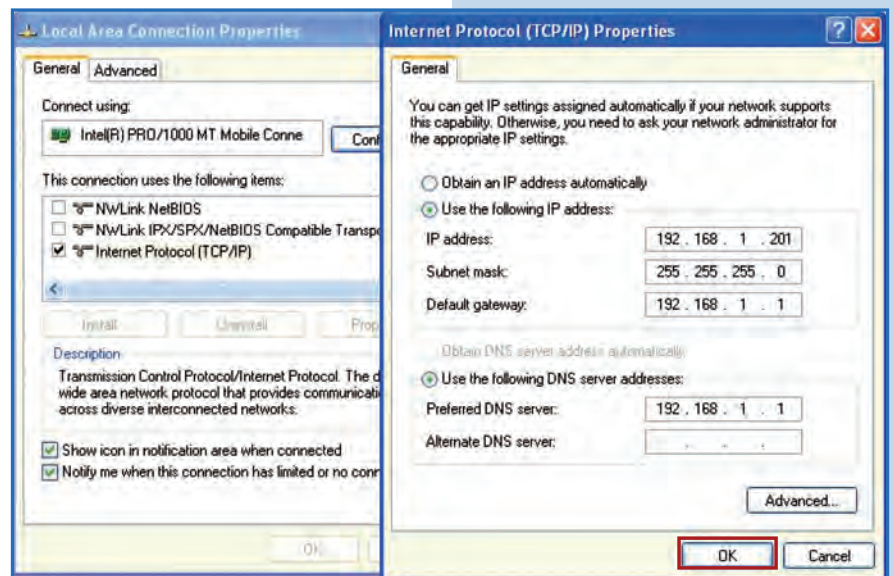
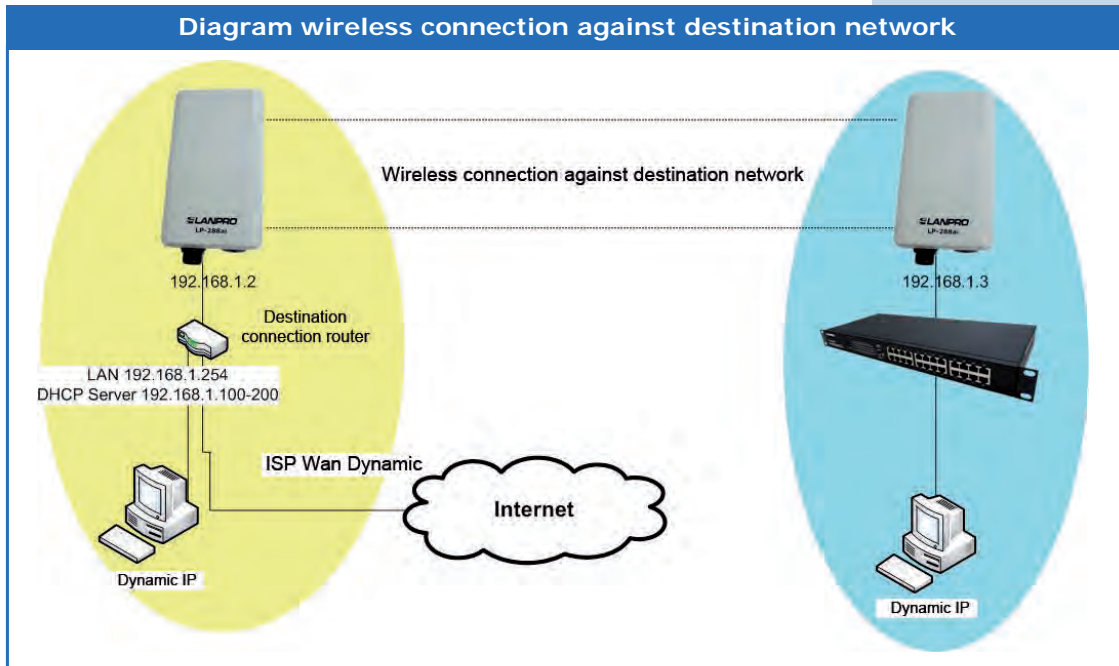


Figure 8

It is important to mention that in this configuration the LP-288ai will be a client of the destination network. Please follow this diagram:



In this diagram the destination network is yellow. There is a router providing Internet access with the address delivery enabled within the segment 192.168.1.x, having the remaining addresses reserved from the scope. Such router will only deliver addresses from 100 to 200 and it will also provide Internet connection. The blue segment is your LP-288ai network with the default address 192.168.1.3.

9

Open the web browser of your preference and type the default address 192.168.1.2, as shown in Figure 9.

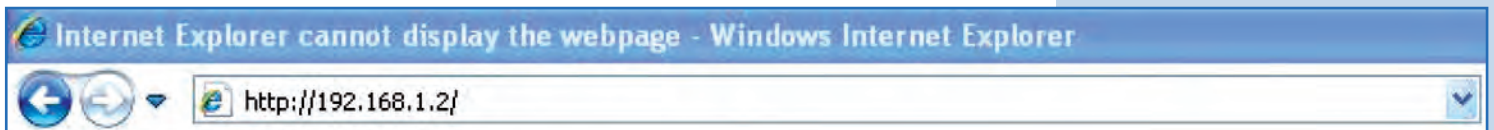


Figure 9

10

The equipment will request a user and a password. The LP-288ai has two user levels, one with all the privileges, which is **super** by default with **super** as password, and another with fewer privileges with **admin** as user and **admin** as password. Type **super** in user and password and select **OK**, as shown in Figure 10.

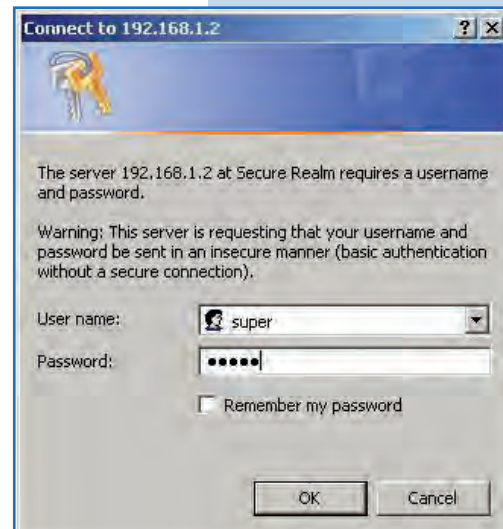


Figure 10

11

Select **Basic/IP Configuration** and change the IP address by **192.168.1.3** (for this example). In order to save changes select **Update**, as shown in **Figure 11**.

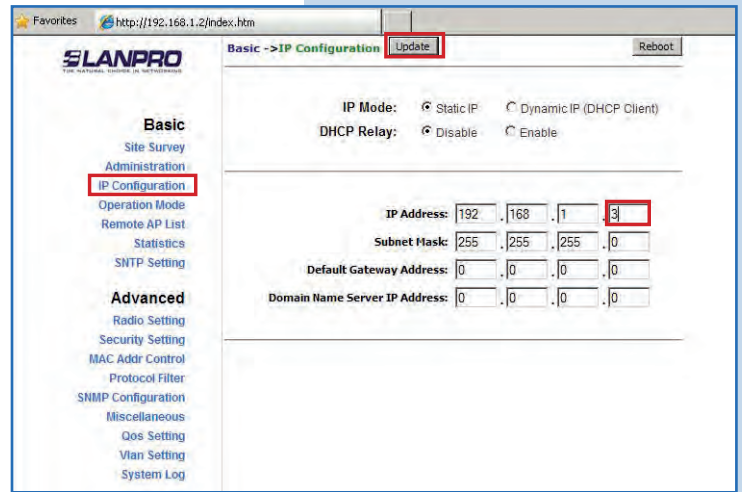


Figure 11

12

Once you have saved changes select **Reboot** to make them effective, as shown in **Figure 12**.

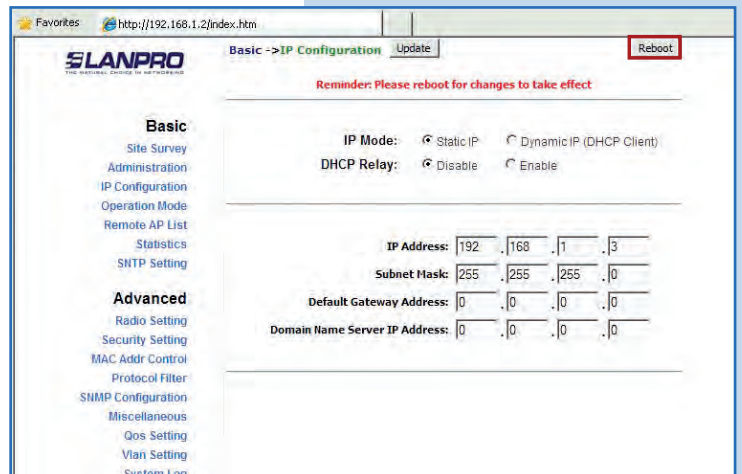


Figure 12

13

The equipment will indicate when is rebooting and applying the changes, as shown in **Figure 13**.

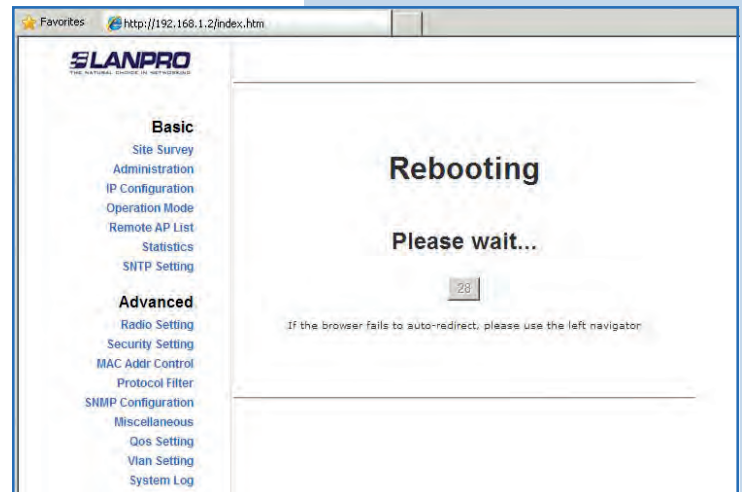


Figure 13

14

Open the web browser of your preference and type the default address **192.168.1.3**, as shown in **Figure 14**.

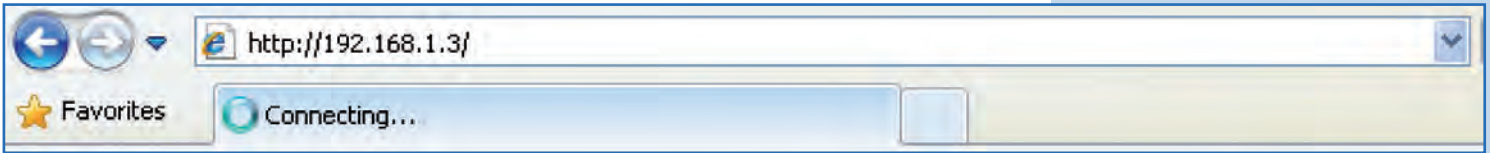


Figure 14

15

The equipment will request a user and a password once again. Enter **super** in user and password and select **OK**, as shown in **Figure 15**.

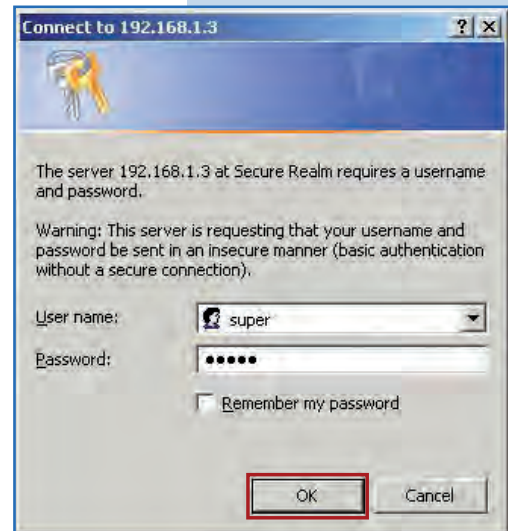


Figure 15

16

Select **Basic/Operation Mode** and then **Wireless Client**. Enter the SSID of the destination network (in this example LanPro LP-288ai), in **Radio Frequency** enter the destination AP channel (in case you do not know it you can select Smart Select). Disable the option **WDS** and click on **Update** to save changes, as shown in **Figure 16**.

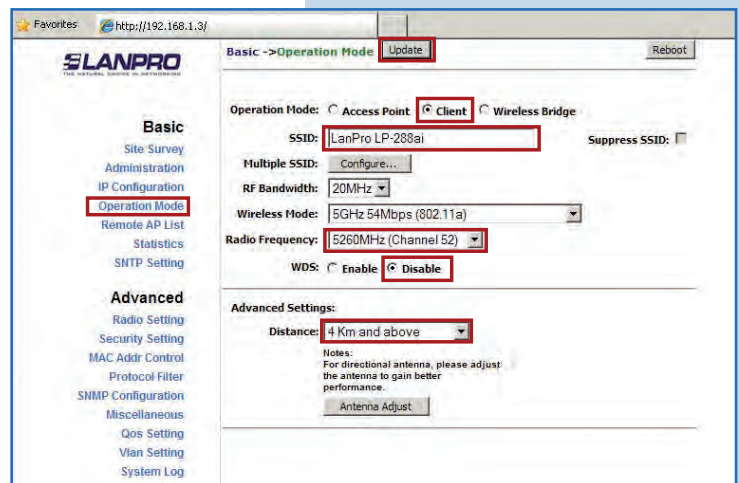


Figure 16

17

The equipment will save changes, but they will not be effective until you reboot the equipment. Select **Reboot**, as shown in **Figure 17**. It is important to mention that you can configure the equipment so that it only connects to the destination AP using **Remote MAC**. For Point to Point and Point to Multi-Point configurations we recommend you to read the document **LP288aiV21B2_M123_END01.pdf**.

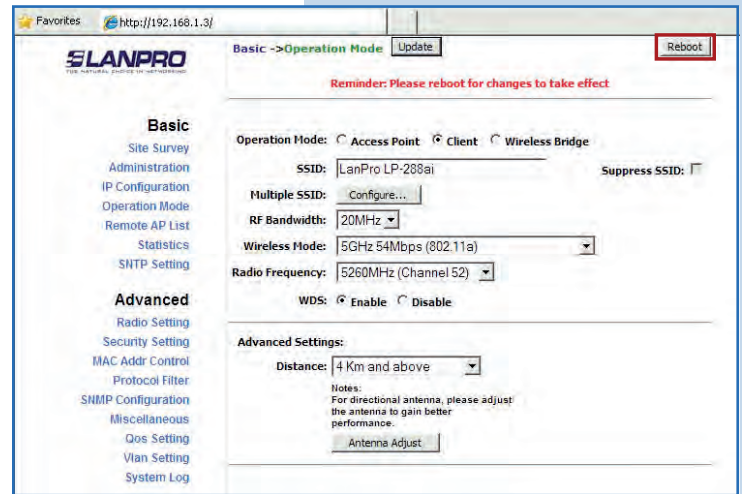


Figure 17

18

The equipment will indicate when is rebooting and applying the changes, as shown in **Figure 18**.

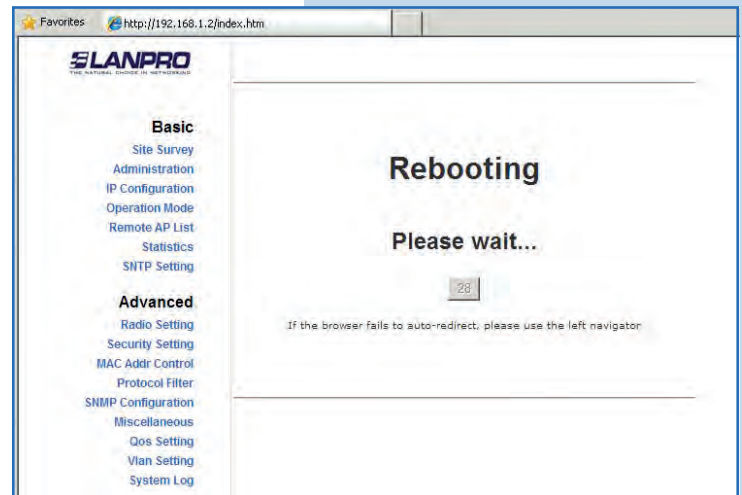


Figure 18

19

Select **Advanced/Security Setting** and in **Security Mode** select the encryption mode, as shown in **Figure 19**. Do not forget to choose the same encryption as the destination AP.

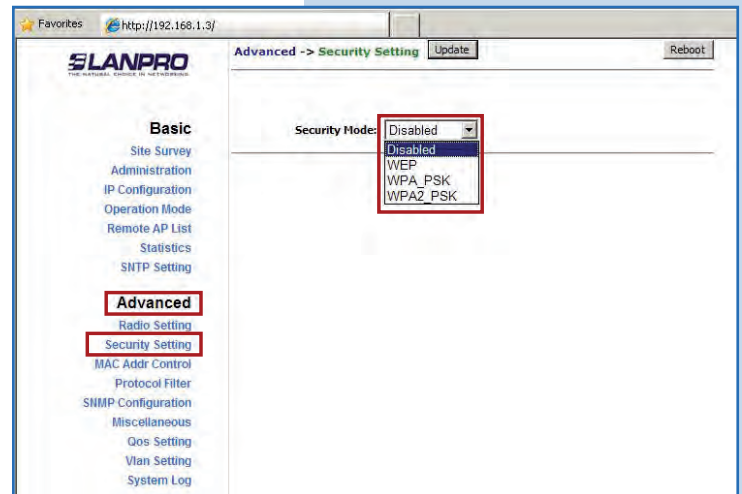


Figure 19

20

You shall type the encryption phrase in **PassPhrase**. Select the cipher type in the corresponding field (remember it has to be the same as the one you have configured in the AP) and click on **Update** to save changes, as shown in **Figure 20**.

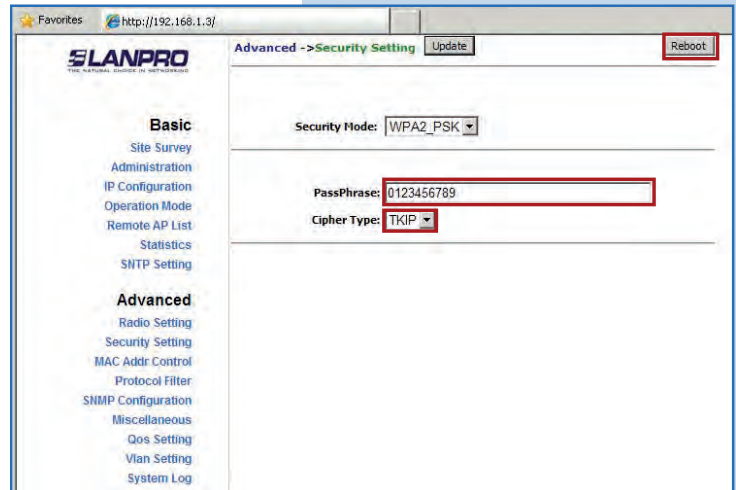


Figure 20

21

Once you have saved changes you shall select **Reboot** to make them effective, as shown in **Figure 21**.

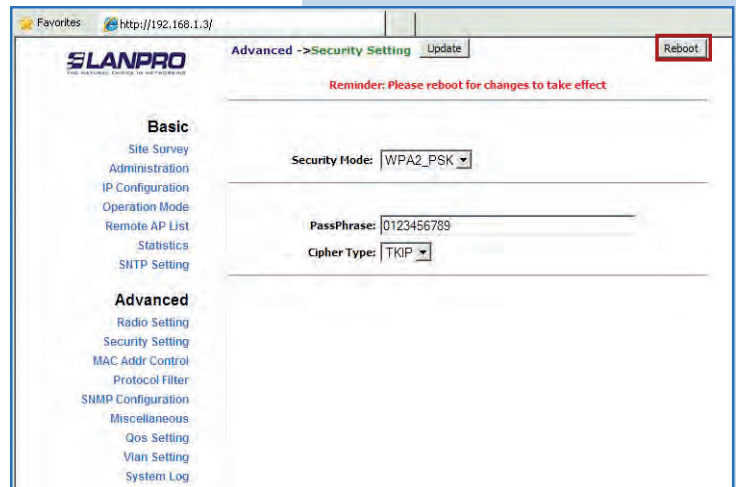


Figure 21

22

The equipment will indicate that is rebooting and applying the changes, as shown in **Figure 22**.

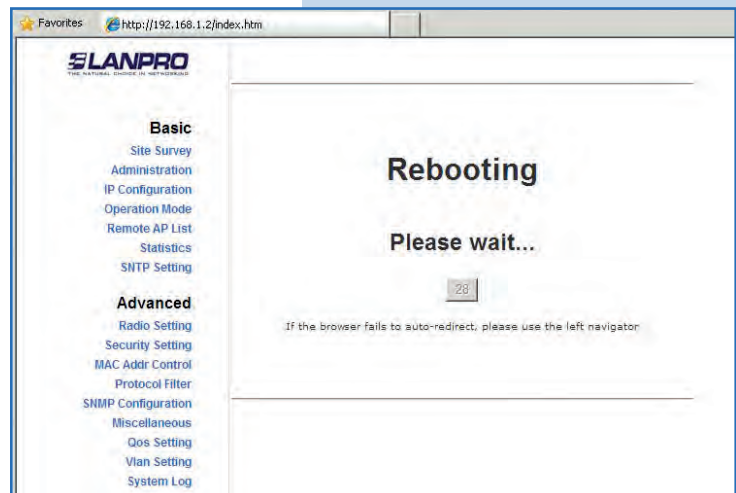


Figure 22

23

To check connectivity, execute the Ping command in a command window against the equipment IP you are connecting to (in this case 192.168.1.2). To do so, select **Start** or **Inicio**, **Run** or **Ejecutar**, and type the **cmd** command, as shown in **Figures 23-1** and **23-2**.

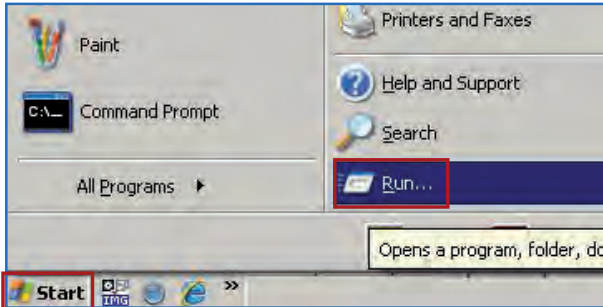


Figure 23-1

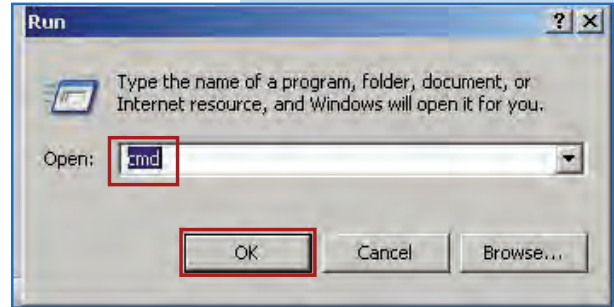


Figure 23-2

24

Type the **ping** command followed by the destination equipment IP (192.168.1.2) and press **Enter**. You will observe the answer of the destination equipment, as shown in **Figures 24-1** and **24-2**. In case you do not get any answer, please verify steps **16**, **19**, and **20**. Remember that the values for channel, security, and password have to be the same as the destination equipment or AP values.

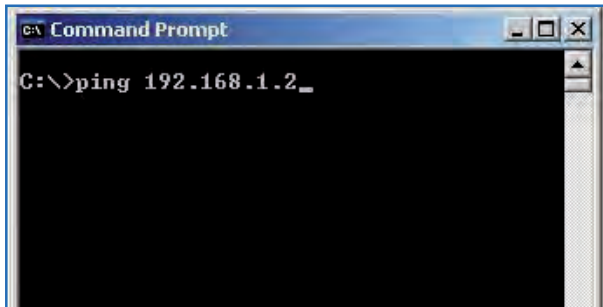


Figure 24-1

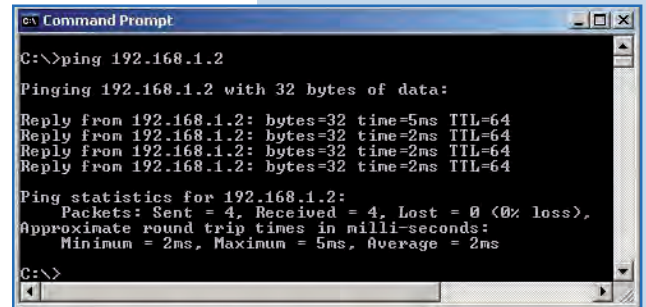


Figure 24-2

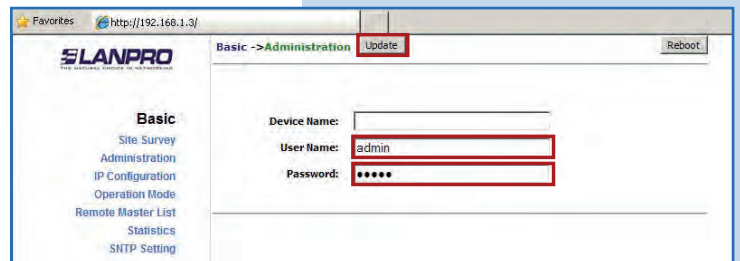
25

Important recommendation (optional):

Proceed to change the password of the user admin and super of your equipment.

To change admin password, select **Basic/Administration** and enter the new **password** in the corresponding field, then select **Update** as shown in **Figure 25**.

Figure 25



26

To make changes effective, select **Reboot** as shown in **Figure 26**.

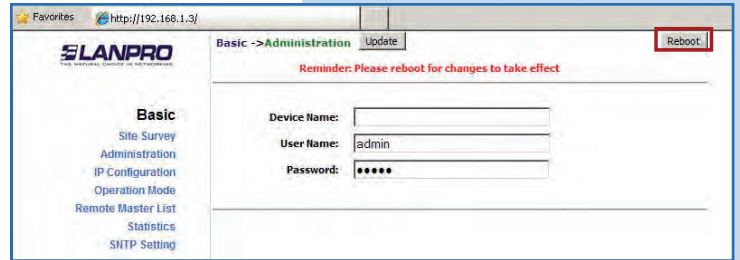


Figure 26

27

The restart of the equipment will be displayed in the screen, as shown in **Figure 27**.

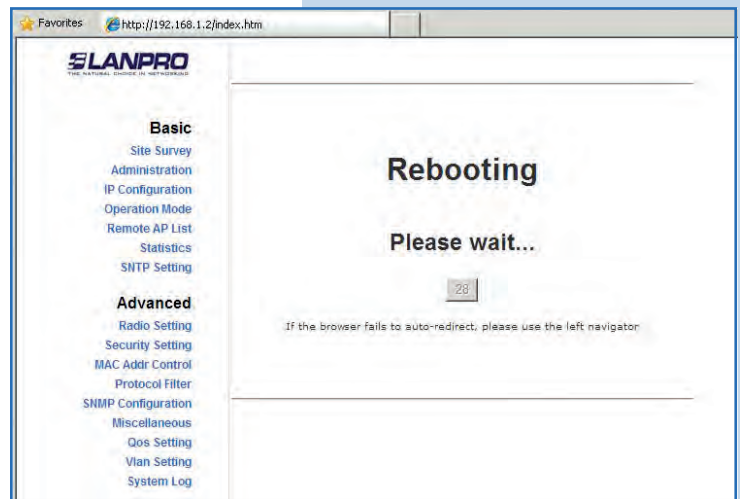


Figure 27

28

Proceed to change the password of the user **super** (to do this change you have to be authenticated as user super). Select the option **Super User/Super User** and enter the new password, then click on **Update** as shown in **Figure 28**.

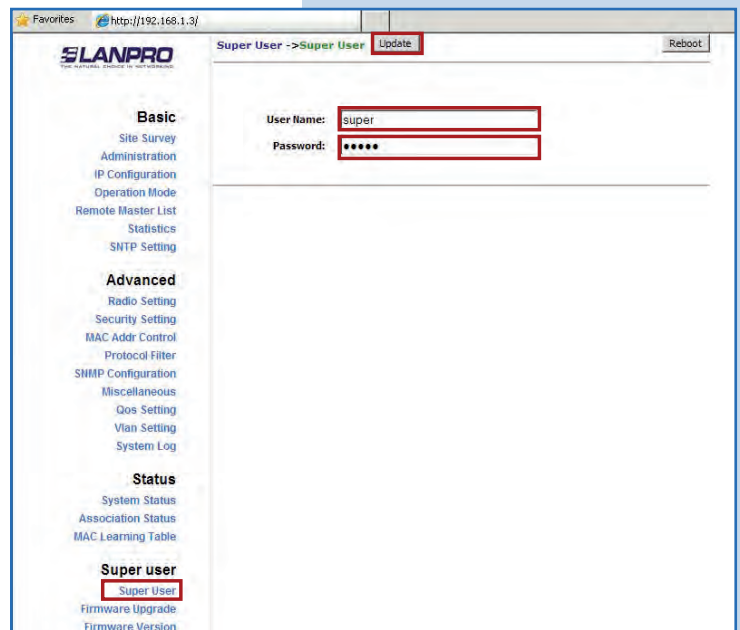


Figure 28

29

To make changes effective, select **Reboot** as shown in **Figure 29**.

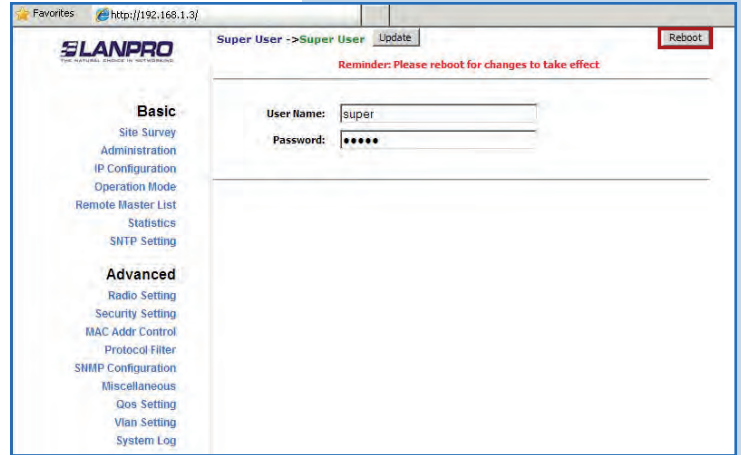


Figure 29

30

The restart of the equipment will be displayed in the screen, as shown in **Figure 30**.

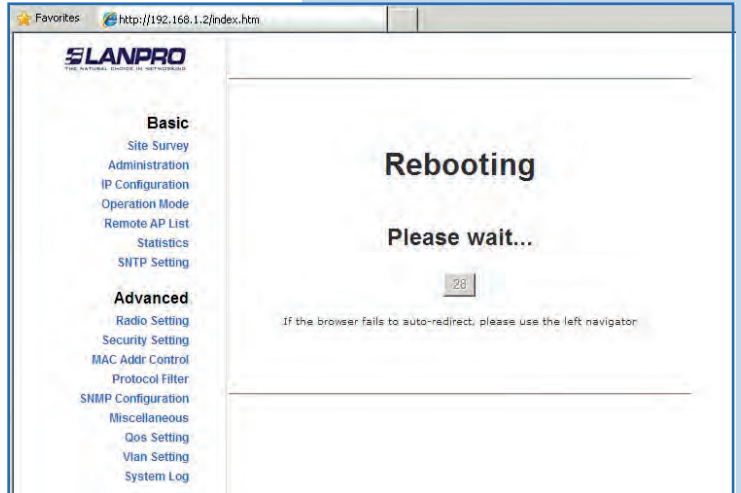


Figure 30

31

The equipment will request your user and password once again. Enter the value you changed and select **OK**, as shown in **Figure 31**.

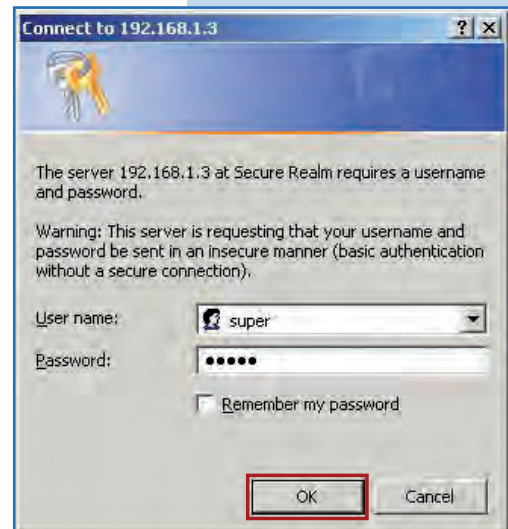


Figure 31