

# **123 Manual, LP-1522 Broadband Wireless AP/ Router Point to Point / Multipoint.**

LP1522\_M123\_ENE02W



## **123 Manual, LP-1522 Broadband Wireless AP/ Router Point to Point / Multipoint.**



## 1

Check box contentment, as it is shown in figure 1.



Figure 1

## 2

Screw the antenna as you can see in Figure 2-1 y 2-2; in case of having an antenna with pigtail type cable, remember that this must be connected in the other end.



Figure 2-1



Figure 2-2

## 3

Connect your PC or Switch to a LAN port of your LP-1522, as it is shown in figure 3-1. In case you want to power it through the PoE option, please connect the cable to your LP-Poe150 **Power+Data** port as it is shown in figure 3-2; remember that the cable length recommended is maximum 60m. Then, connect a cable from **Data in** port of your LP-Poe150 to your PC or Switch as shown in figure 3-3.



Figure 3-1



Figure 3-2



Figure 3-3

## 4

Connect the DC electrical power plug to the power jack as shown in figure 4-1; do not forget that this device can be also powered through PoE with the LP-Poe150 (not included). If used, please connect the LP-Poe150 to the mains as it is shown in figure 4-2.



Figure 4-1



Figure 4-2

## 5

Go to the Local Area Connection Properties window of your network card (shown in figure 5) and select: **Internet Protocol**, then: **Properties**.

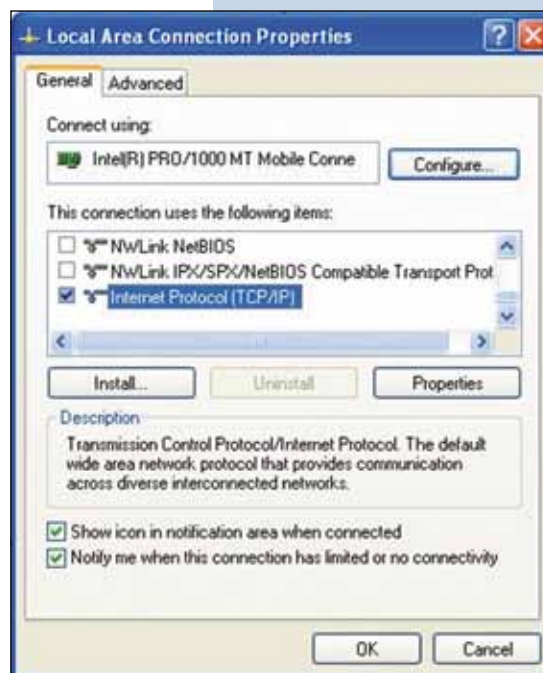


Figure 5

## 6

In the window of figure 6, please select: **Use the following IP address**, and then input an **IP address** in the range of IP address by default of the LP-1522. In this example, we have selected the following address: 192.168.1.201. The LP-1522 default address is: 192.168.1.254. Now, input in **Subnet mask** 255.255.255.0. In **Default gateway** input the destination router address. In DNS, input DNS address of your ISP or destination router address that supplies Internet service, this is for any queries that need to be sent to the destination router. See diagram.

Once you have finished, click: **OK**, then: **OK** again, and then: **Close**.

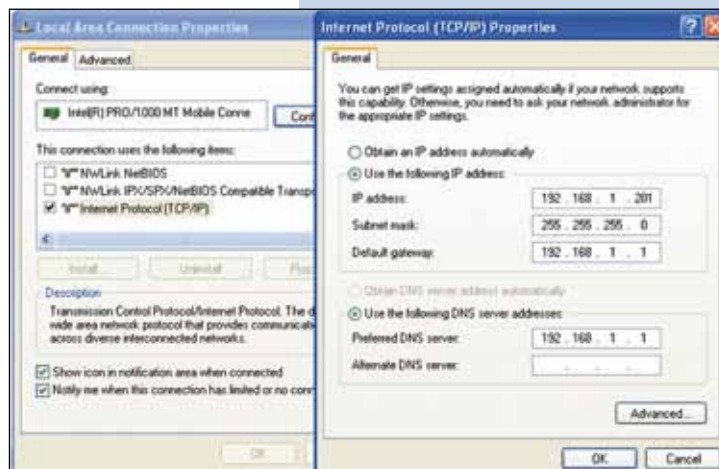


Figure 6

## 7

For this configuration, you will need MAC addresses of the devices that will be part of point-to-point and multipoint link connections:

- a Open your selected browser and enter IP address by default 192.168.1.254, as it is shown in figure 7-1.



Figure 7-1

- b Select the option: **Management**, then: **Status**. In this screen you will be able to see the equipment MAC Address, as it is shown in figure 7-2. Please, write down this number. To see the other equipment MAC addresses, please repeat step 1 through 5 for each equipment and write those numbers down on your log. Remember that this step is very important; do not confuse MAC Address because they are unique identifiers for each equipment.



Figure 7-2

## 8

To continue, please take the first equipment and open your selected browser, enter default address 192.168.1.254, as it is shown in figure 8.

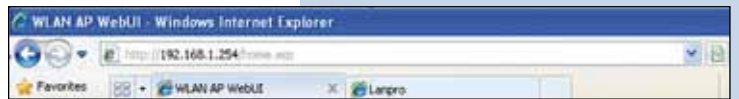


Figure 8

## 9

In the window shown in figure 9, select: **Operation Mode**, then select: **Bridge**, and finally, click on **Apply Changes**.

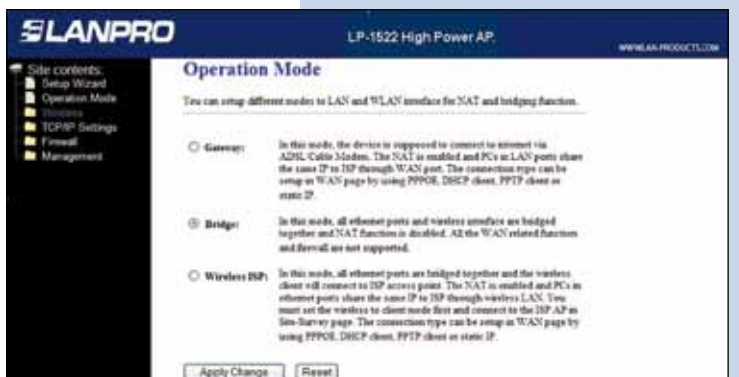


Figure 9

## 10

Once you see the window shown in figure 10 indicating "Change setting successfully", please click **OK**.



Figure 10

## 11

In the window shown in figure 11, please select: **Wireless, Basic Settings**, in: **Mode**, select: WDS, verify Channel Number, because this must be similar in all equipment. Then, please, click on: **Apply Changes**. The equipment will ask confirmation that in this mode WPS cannot be supported, click **OK** and **OK** again. The equipment will restart.

Figure 11



## 12

In the window similar to figure 12, please, select: **Wireless – WDS Settings**, check the box: **Enable WDS** and add LAN MAC addresses of the equipment that work under this mode, except the MAC address of the one that is already installed, add a little description. Remember to click on: **Apply Changes** for each equipment.

Figure 12



## 13

Once you see the window shown in figure 13 indicating "Change setting successfully", please click **OK** and then **OK**. The equipment will restart.

Figure 13



## 14

Now proceed to set the WDS security, for this, in the window shown in figure 14, please select: **Wireless, WDS Settings, Set Security**.

Figure 14





## 15

A window will open (shown in figure 15) where you have to set the security of this mode. It is very important to mention that security must be likely configured in all equipment being part of these connections. In: **Encryption**, please enter the type of encryption you wish, we recommend **WPA2(ES)**, even though, verify that all equipment can support it. Enter a password, minimum 8 characters. This password must be the same for all equipment. Then select, **Apply Changes**. Click: **OK** and close the window **WDS Security Setup**.



Figure 15

## 16

As you can see in window shown in figure 16, you have to disable DHCP selecting in DHCP: **Disabled**. Likewise, we advise you to put a different IP for each equipment, this is for its administration and wireless address. In order to do this, select the option: **TCP/IP Settings, LAN Interface** and input an IP address into the segment. Example: 192.168.1.254 for the first one, 192.168.1.253 for the second one, and for the third 192.168.1.152. This will depend on your network diagram. Finally, click on: **Apply Changes**, the equipment will restart, and to have access to it, you must enter the new IP. **You have to repeat all steps for each equipment.**



Figure 16

## 17

Here you can see a diagram of a typical Multi-point network, see Figure 7.

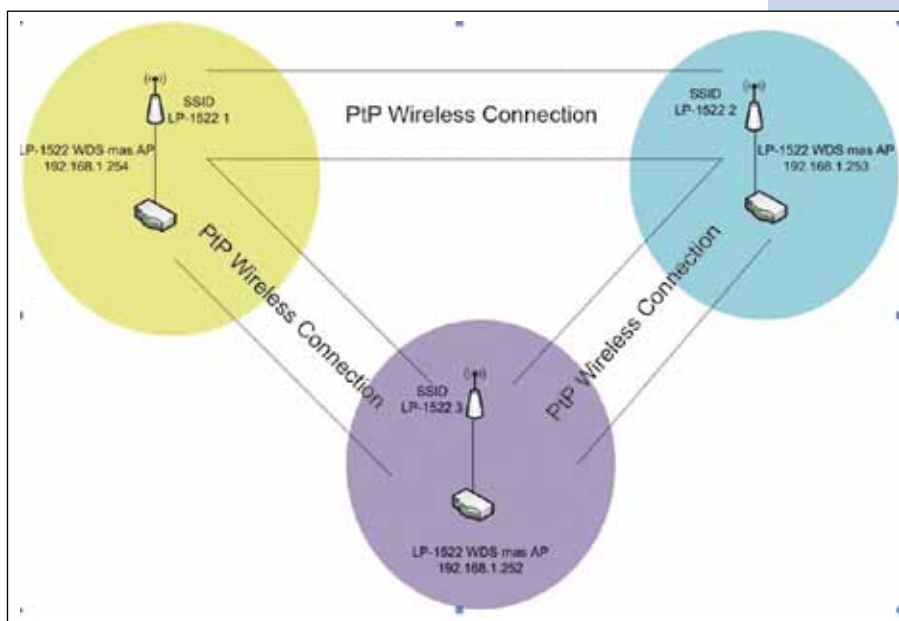


Figura 17

## 18

**Important Recommendation (Optional)**

Proceed to change the administrative password of your equipment. In order to do this, please select: **Management**, then: **Password**, input the user name which is **Admin**, and then type the new password in: **New Password** and type it again in **Confirmed Password**. Finally, click on Apply Changes. In order to access to your equipment again, you must input these data.

Figure 18

