



123 MANUAL INITIAL CONFIGURATION

LP-1522

Access Point and 800mW Router,
with the standard 802.11b/g,
and with PoE technology and external antenna

Installation Point-to-Point, Multipoint

- 1 Check the box contentment.

Figure 1



- 2 Screw the antenna as you can see in **Figure 2**; in case of having an antenna with pigtail type cable, make sure that antenna cable is plugged into the antenna and then screw the other end into your SMA connector of your LP-1522. **See Figure 3. Note: Never operate the LP-1522 without the antenna, because you will damage the RF output stage.**

Figure 2



Figure 3



- 3 Connect your PC or Switch to the LAN port of your LP-1522, as it is shown in Figure 4.

Figure 4



- 4 Connect the DC electrical power plug into the power jack, **see figure 5**. The LP-1522 can be fed alternatively through a LAN port simultaneously with DATA. For this, you must use a LP-PoE150(*) injector on the side of your Switch or PC and send Data+Power to the LP-1522 up to 100m distance with our new **LP-CE** Cat5e or **LP-C6** Cat6 copper UTP cables and 80m distance with LanPro **LP-BMCAT5E** bi-metallic UTP Cable, **see Figure 6**.

(*) The LP-PoE150 Injector is not included.

Figure 5



Figure 6

(*) The LP-PoE150 Injector is not included.



- 5 For this configuration you will need MAC addresses of the equipment that will be part of the Point-to-Point and Multipoint link connection(s).
- 6 Open your selected browser and input the same default address: 192.168.1.254, as you can see in Figure 7.

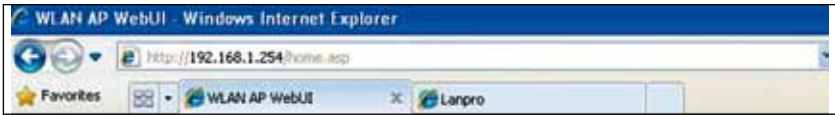


Figure 7

- 7 In **Figure 8**, select:
Operation **Mode**.
Select: **Bridge**.
Click: **Apply Changes**.

Figure 8



- 8 Once you see the window shown in Figure 9, indicating "Change setting successfully!" then click: **OK**.

Figure 9



- 9 In the windows shown in Figure 10, select: **Wireless, Basic Settings**, in: **Mode**, select: **WDS**, verify the channel, because it must be the same in all equipment, then select: **Apply Changes**, the equipment will restart.

Figure 10



- 10 In the windows shown in Figure 11, select: **Wireless, WDS Settings** and the add **LAN MAC** address of the routers that will work under this mode, except the MAC Address already configured. Remember to click on: **Apply Changes**, for each one of the equipment.

Figure 11



- 11 Once you see the window shown in Figure 12, indicating "Change setting successfully!" click: **OK**, then: **OK**, and the equipment will restart.

Figure 12



- 12 Now proceed to set WDS security, for this, in the windows shown in Figure 13, select: **Wireless, WDS Settings, Set Security**.

Figure 13



- 13 A window like the one shown in Figure 14 will be displayed, in it you have to set security of this mode. It is very important to emphasize that security must be equally configured in all equipment being part of these connections.

In: **Encryption**, please enter the type of encryption you wish, we recommend **WPA2(ES)**, even though, verify that all equipment can support it. Enter a password, minimum 8 characters. This password must be the same for all equipment. Then select, **Apply Changes**.

Figure 14



- 14 You must carry out all steps for each equipment. Likewise, you must assign each equipment a different IP address for its administration. For this, in the window shown in Figure 15, select the option: **TCP/IP Settings, LAN Interface** and input an IP address in the segment. We used for this example: 192.168.1.253, this will depend of your network diagram. Click: **Apply Changes**, the equipment will restart and to access to it, you have to enter the new IP.

Figure 15



- 15 Here you can see a typical Multipoint network diagram, **see Figure 16.**

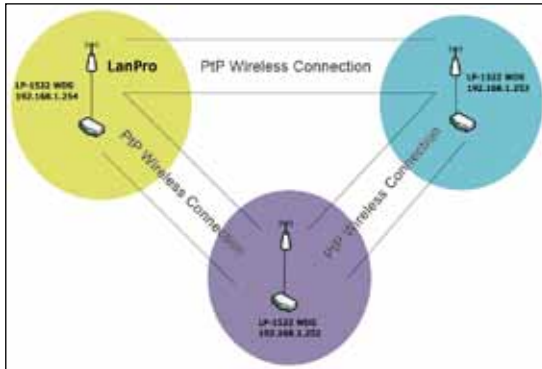


Figure 16

Important Recommendation (Optional)

- 16 Proceed to change the administrative password of your equipment. Please select: **Management**, then: **Password**, input the user name which is **Admin**, and then type the new password in: **New Password** and type it again in **Confirmed Password**. Finally, click on Apply Changes. In other to access to your equipment again, you must input these data once you are asked.



Figure 17

In our Website **www.lanpro.com** you may be able to see 123 Manuals to configure you equipment like AP, Point-to-Point, Multipoint, Client and WISP.