

**LP-1521 Bradband Router 123 Manual,
Universal Repeater Mode Installation, with PoE.**

LP1521_M123_ENP01W

**LP-1521 Bradband Router 123 Manual,
Universal Repeater Mode Installation
with PoE.**

Dear Customer, it is important to mention that for this kind of installation you will have to take in account the following data:

1. Name of the network you wish to repeat the signal from.
2. Channel of the network you wish to repeat the signal from.
3. Key and cipher mode of the network you wish to repeat the signal from.
4. Cipher mode shall be: WEP, WPA(TKIP) or WPA2(AES).
5. If you have Mac or IP Access control configured in the Router of the network you wish to repeat the signal from, please take note of it.

In this configuration, the LP-1521 will be the Client of the network you want to repeat and an additional Access point of the selected network.

- 1 Please check the package contents, please see Figure 1.



Figure 1

- 2 Screw the antenna as shown in figure 2.



Figure 2

- 3 Connect your PC to a LAN port of the LP-1521 as shown in figure 3.



Figure 3

- 4 Connect your ISP cable to the WAN port as shown in figure 4 (ISP: Internet Service Provider).



Figure 4

- 5 The LP-1521 can be powered in three different ways:

A.-Via passive PoE: through any of the following ports: WAN, LAN1 and LAN4 . The RJ45 Pins used are: Pin 5 (-12 VDC) and Pin 7 (+12 VDC). You must include a Passive Injector and a power converter supplying between 12 and 22 VDC and power the LP-1521 through distances up to 40 m.

B.-Via active PoE: you can use the LP-PoE150 injector and LP-PoE151 splitter made by Lanpro. This arrangement will let you put the LP-1521 as far as 100 m from the injector. You must set the splitter to 12 VDC and power the LP-1521 through the power Jack.

C.- Via the Jack placed at the right of the LAN4 port. We have provided with this kit a way to power the LP-1521 by using a 120 VAC to 12 VDC Power Converter included in the box and shown in figure 5.



Figure 5

- 6 In the window shown in figure 6, go to the properties of your network card and select: **Internet Protocol**, select then: **Properties**.

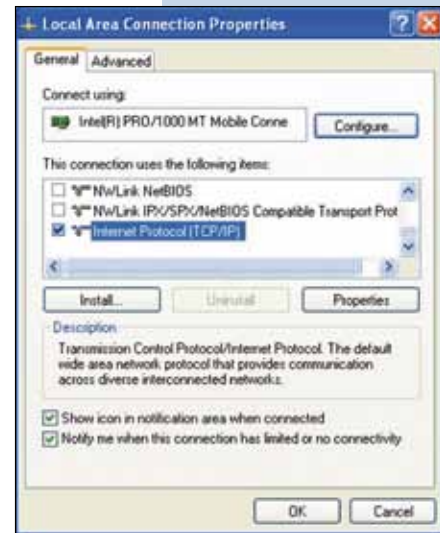


Figure 6

- 7 In the window shown in figure 6, select: **Use the following IP address** and input an IP address in the LP-1521 default IP address range. In this example we have selected the following address: **192.168.1.201**, and the LP-1521's default address is: **192.168.1.254**. Input in: **Subnet mask: 255.255.255.0**, in: **Default gateway** input the destination router address, in the **DNS** you must input the: **DNS** of your ISP or the destination Router IP address that provides the Internet Service, the purpose of this is that any queries should be directed to the destination router. Once finished, please select: **OK** then: **Close**.

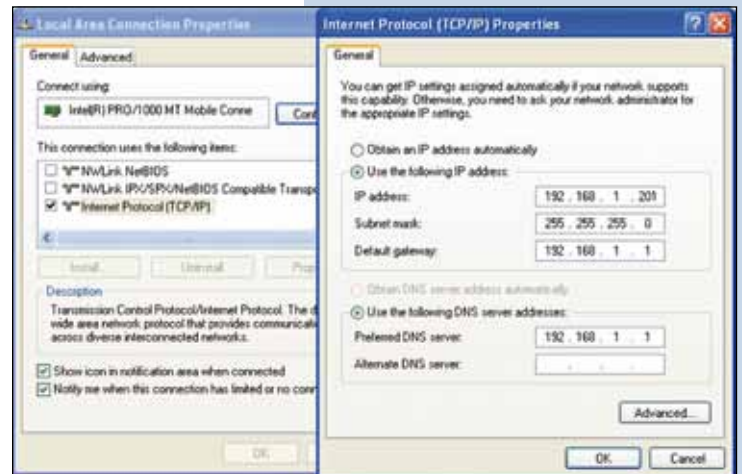


Figure 7

- 8 Open the Browser of your preference and use the following address by default: **192.168.1.254** as shown in figure 8.

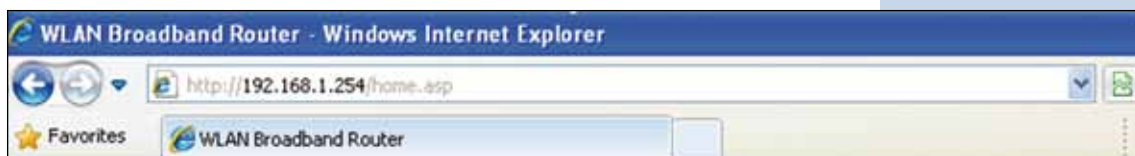


Figure 8

- 9 In the window shown in figure 9, select option: **TCP/IP Settings, LAN Interface**, in: **DHCP** select: **Disabled** and then select: **Apply changes** (remember to verify that the IP address of the LP-1521 is not being used in the network you are going to connect to. (It is recommended to use an IP address inside the destination segment for proper management).



Figure 9

- 10 In the window shown in figure 10, select : **Wireless, Basic Settings**, in: **Mode** select: **AP**. The **SSID** shall be different to the one of the network to be connected to, because it will be a new Access Point. In: **Channel Number** select the same channel of the network signal that is going to be repeated, then select option: **Enable Universal Repeater Mode**, input the: **SSID of extended Interface** the name of the network signal that is going to be repeated, then select: **Apply Changes**, the equipment will reboot.



Figure 10

- 11 Now, the security of the wireless connection will be configured. If the destination router's security is already enabled, please remember that in this type of configuration of the LP-1521, it behaves as a Client of the destination router and you must configure the security as another client of this network.

Please take in mind that the WPA2 Mixed security mode is not supported in Client Mode. The security mode you select will be used by all other clients of this Access Point.

In the window shown in figure 11, select: **Wireless, Security**, in mode: **Encryption** use the one that corresponds and input the Key, then select: **Apply changes**.



Figure 11

- 12 In figure 12, select: **OK** and then reboot.

Once this configuration has been made, the LP-1521 will connect automatically even though you disconnect or connect it again.

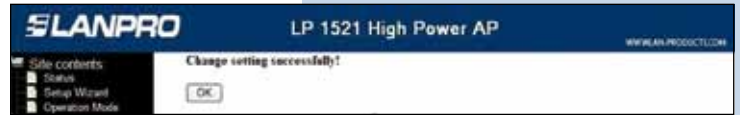


Figure 12

- 13 Important recommendation. (Optional but highly recommended).

Proceed to change the administration password. In order to do this, select: **Management**, then: **Password**, input the user name: **Admin**, input a new password in: **New Password** and also in: **Confirmed Password**, then select: **Apply changes**. You will need this data in order to be able to Access the equipment again.



Figure 13