

**LP-1521 Broadband AP Router, 123 Manual.
Installation in Client mode, (with PoE).**

LP1521_M123_ENE01W



**LP-1521 Broadband AP Router.
123 Manual,
Installation in Client mode,
(with PoE).**



1 Please check the package contents, please see Figure 1.



Figure 1

2 Screw the antenna as shown in figure 2.



Figure 2

3 Connect your PC to a LAN port of the LP-1521 as shown in figure 3.



Figure 3

4 The LP-1521 can be powered in three different ways:

A.-Via passive PoE: through any of the following ports: WAN, LAN1 and LAN4 . The RJ45 Pins used are: Pin 5 (-12 VDC) and Pin 7 (+12 VDC). You must include a Passive Injector and a power converter supplying between 12 and 22 VDC and power the LP-1521 through distances up to 40 m.

B.-Via active PoE: you can use the LP-PoE150 injector and LP-PoE151 splitter made by Lanpro. This arrangement will let you put the LP-1521 as far as 100 m from the injector. You must set the splitter to 12 VDC and power the LP-1521 through the power Jack.

C.- Via the Jack placed at the right of the LAN4 port. We have provided with this kit a way to power the LP-1521 by using a 120 VAC to 12 VDC Power Converter included in the box and shown in figure 4.



Figure 4

- 5 Go to the properties of your NIC card and select: **Internet Protocol**, then select: **Properties** as shown in figure 5.

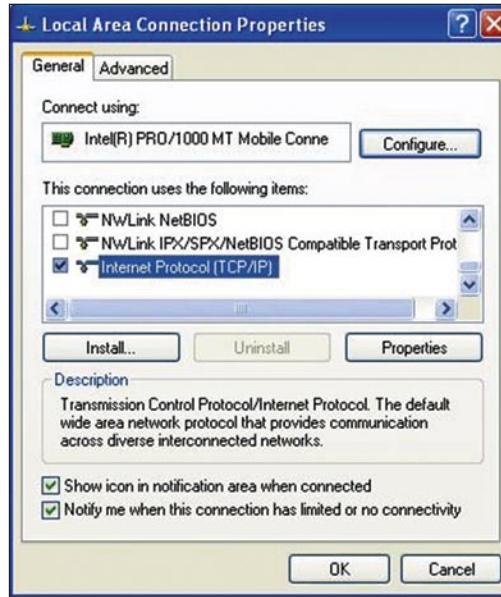


Figure 5

- 6 Select your IP address, putting it in the range of the default IP for the LP-1521. In this example we have selected address: 192.168.1.201, the LP-1521 has a default address of 192.168.1.254, place in: **Subnet mask** 255.255.255.0 as shown in figure 6 and in the: **Default Gateway** the destination router address. In: **DNS** you must place your ISP's DNS address or the IP address of the destination router that provides the Internet service, that is so because any queries should be directed to the destination router, please see the diagram in figure 7.

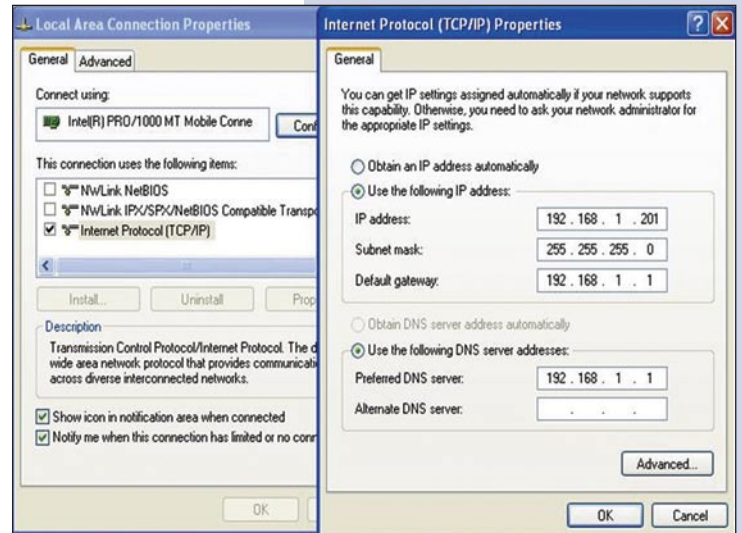


Figure 6

Once finished, please select: **OK** and then: **Close**. It is important to mention that in this configuration of the LP-1521, it will be a client of the destination network, please follow the diagram shown in figure 7:

In this diagram, the destination network is yellow colored. In it, you see a router providing the internet service delivering addresses in the segment 192.168.1.x, with rest of addresses of the scope reserved, this router will deliver addresses limited to the range from 100 to 2000, and provides the Internet connection. The blue segment of the network of your LP-1521 is where it has it's default address: 192.168.1.254.

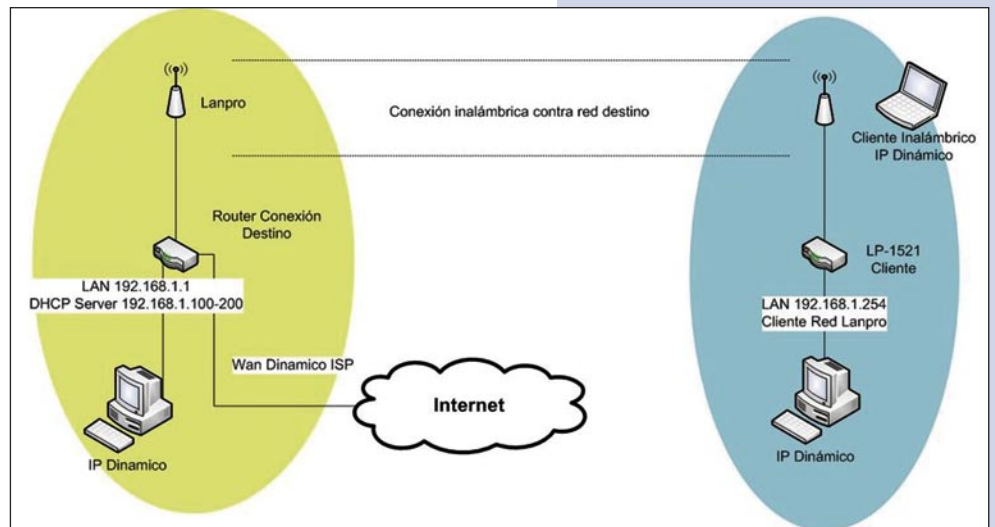


Figure 7

7 Open the browser of your selection and search for the default address: 192.168.1.254 as shown in figure 8.



Figure 8

8 In the window shown in figure 9, please select option: **TCP/IP Settings, LAN Interface** and in: **DHCP** select: **Disabled** then select: **Apply changes**.



Figure 9

9 Select: **Wireless**, in the window that pops up, shown in figure 10, please select: **Basic Settings**, in **Mode** select: **Client**, then select: **Apply Changes**, the equipment will reset.

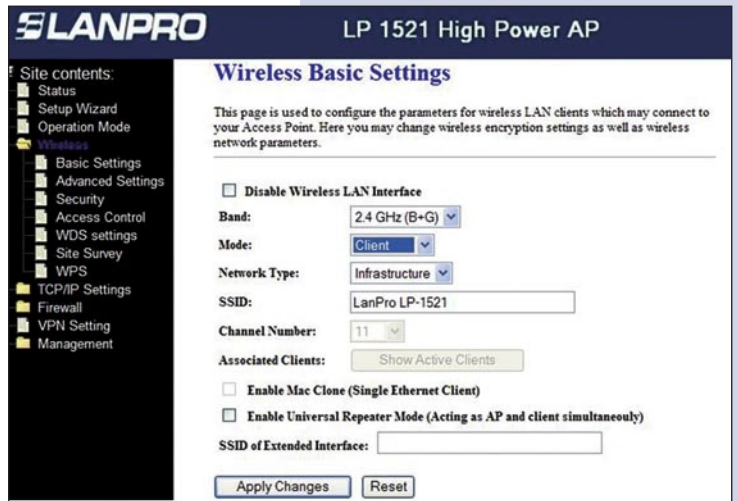


Figure 10

10 Now you will configure the Security of the wireless connection in case the destination router security is enabled.

Please always remember that in this configuration, the LP-1521 behaves as a Client of the destination router. Configure the security as another client in this network. Please take in mind that the WPA2 Mixed security mode is not supported in Client mode.

In the window shown in figure 11, select: **Wireless, Security**, mode: **Encryption**. Use the one that suits your application and input a password. Once done, please select: **Apply Changes**.

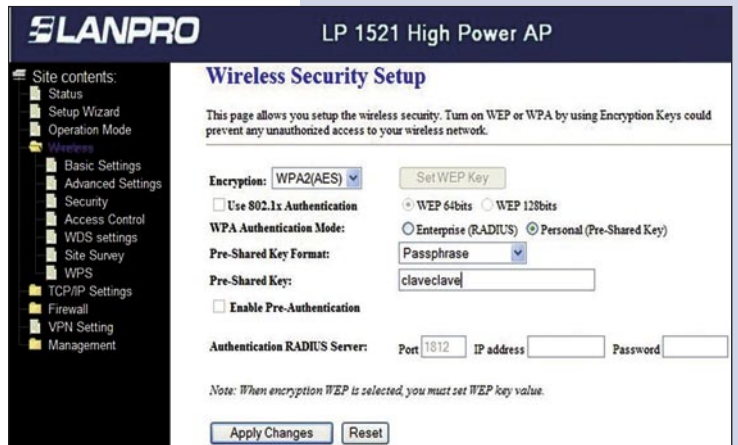


Figure 11

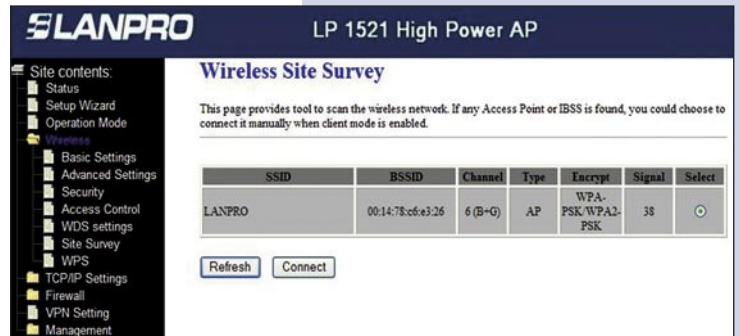
- 11 Select: **OK** once the window shown in figure 12 pops-up. The equipment will re-initialize.

Figure 12



- 12 We now proceed to connect to that network. In order to do this, please look at figure 12 and select: **Wireless, Site Survey** and select the network you wish to connect to by selecting: **Connect**. If the network doesn't appear, select: **Refresh** until you see it appear.

Figure 13



- 13 Once connectet, the message shown in figure 14 will pop-up:

Once this configuration has been done, the LP-1521 will connect again in automatic mode, even though the link becomes disconnected and connected again.

Figure 14



14 Important recommendation (optional):

Proceed to change the administration password of your equipment, as shown in figure 15. In order to proceed, please select: **Management**, then: **Password**, input the user name: **admin**, input again the same password in: **New Password** and: **Confirmed Password**, select: **Apply changes**, please don't forget these data in order to be able to access the system again.

Figure 15

