

**123 Manual, LP-1520ai Wireless Broadband Radio.
Pole and Wall-Mount.**

LP1520ai_M123_ENH01W



**123 Manual, LP-1520ai
Wireless Broadband Radio.
Pole and Wall-Mount.**

1

Check the content of the box shown in **Figure 1**.

Figure 1**2****POLE-MOUNT**

Place the adjusting plate, as shown in **Figure 2**.

Figure 2**3**

Place the Azimuth mounting bracket for pole and then put the screw in, as shown in **Figures 3-1** and **3-2**.

**Figure 3-1****Figure 3-2**

4

Place the mounting bracket for pole, as shown in **Figure 4**.



Figure 4

5

Affix the equipment to the pole and adjust the bracket, as shown in **Figures 5-1** and **5-2**.

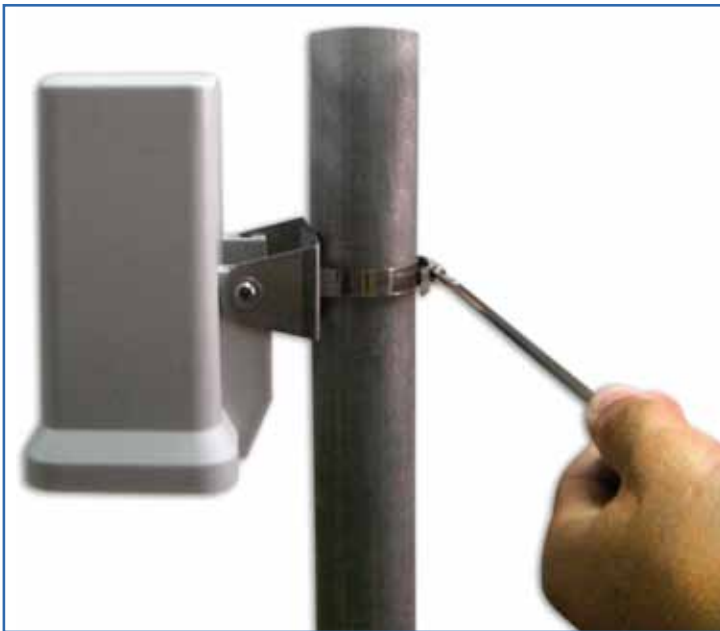


Figure 5-1



Figure 5-2

6

WALL-MOUNT

Tools for wall-mount fixture, **Figure 6.**



Figure 6

7

Proceed to perforate the wall and put the ramplug in, as shown in **Figure 7.**



Figure 7

8

Place the wall-mount base. Then put the screws in, as shown in **Figure 8.**



Figure 8

9

Affix the 1520ai to the base and secure with the screws, as shown in **Figures 9-1 and 9-2**.



Figure 9-1



Figure 9-2