

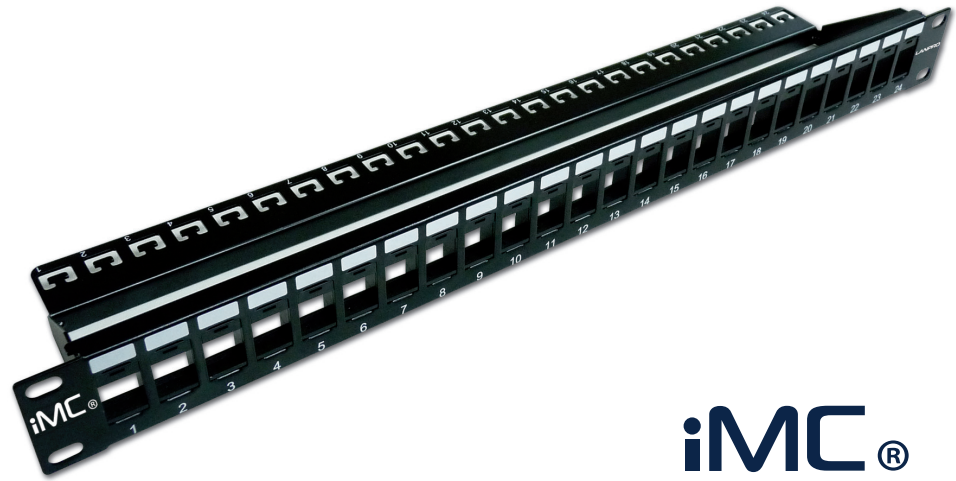
LP-iPXXUS

iMC® 8000 Series Unloaded Unshielded Patch Panels with 16, 24 or 48 ports for iMC® interchangeable and Mixed CAT 3 to CAT 6A, Audio, Video and Fiber Optic Adaptor Modules.

LPiPXXUS_SS_ENB01W

Features

- 16, 24 or 48 port for **iMC®** Keystone type Modules of video, sound, optical fiber or UTP CAT 3 to CAT 6A jacks.
- 19" rack mountable, using 1U or 2 U vertical space on the rack.
- For multimedia compatible applications **iMC® Modular Compatibility.**



iMC®

LP-iPXXUS

iMC® 8000 Series Unloaded Unshielded Patch Panels with 16, 24 or 48 ports for iMC® interchangeable and Mixed CAT 3 to CAT 6A, Audio, Video and Fiber Optic Adaptor Modules.

The **iMC® 8000 Series of Interchangeable Modular Components** is a flexible system of modules designed with multimedia + data needs in mind and which **key feature** is the **inherent interchangeability and configurability in the field**. Using the full line of **iMC®** modules, the panels can be configured for a variety of multimedia applications. Blank modules may be used to reserve ports for future applications.

The user can mix-in any combination of Keystone® sized Fiber Optic, audio, Video modules besides the standard CAT 3 to CAT 6A UTP data networking jacks to obtain the exact performance level required for providing true multimedia capabilities all in one patch panel frame.

LanPro recommends the use of series 8000 RJ45 connectors on **iMC®** patch panels for compatibility.

The **iMC® 8000 series** of 16, 24 or 48 port Unloaded Unshielded Patch panel for Keystone® compatible Modules by LanPro are made to the most stringent specifications in order to give a long lasting service to your **iMC®** structured cabling installation.

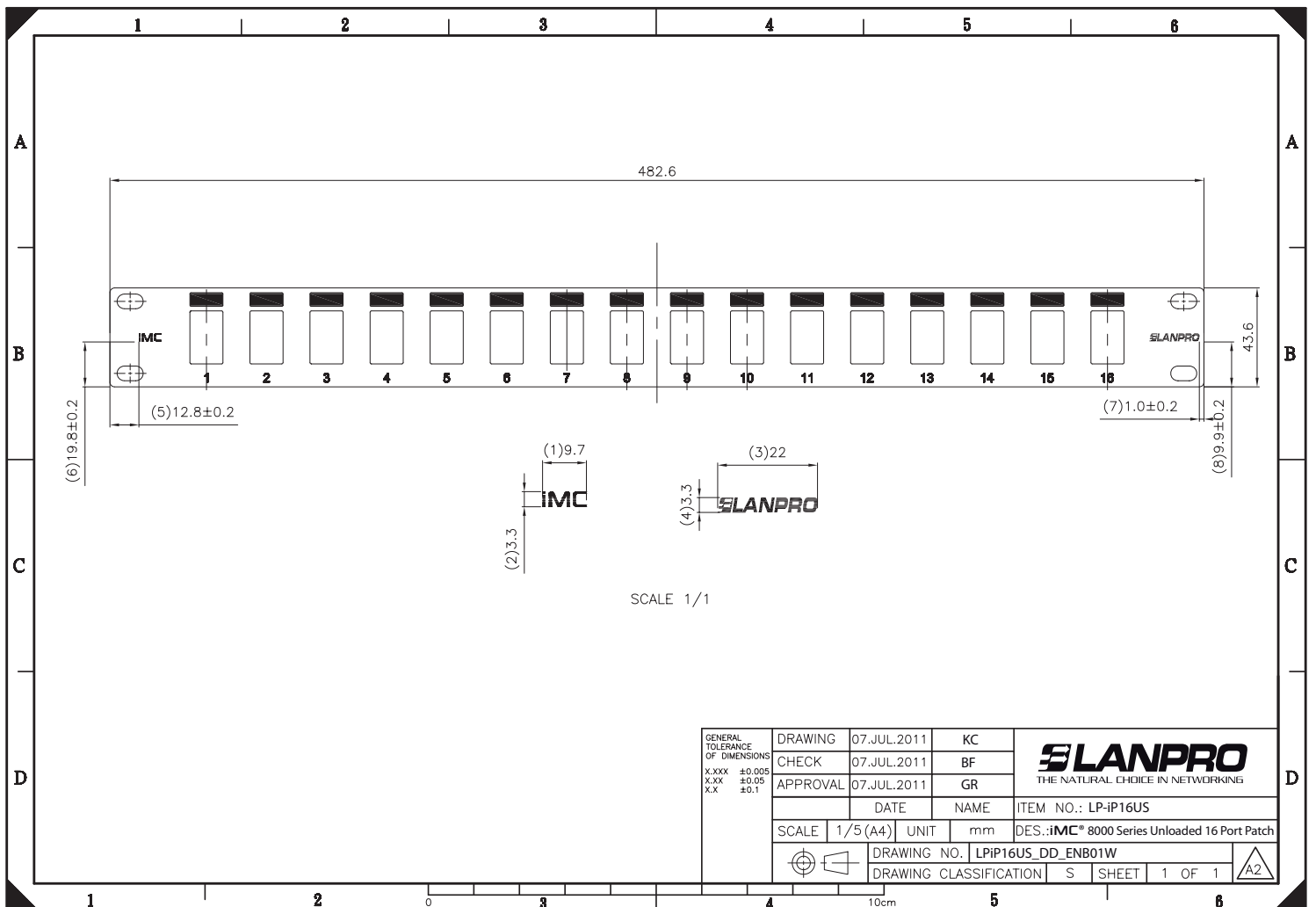
Built with excellent workmanship standards, they include the best materials and finishes that will comply with the Industry Standards of quality and performance.

No detail has been left behind in the design and manufacture of this product.

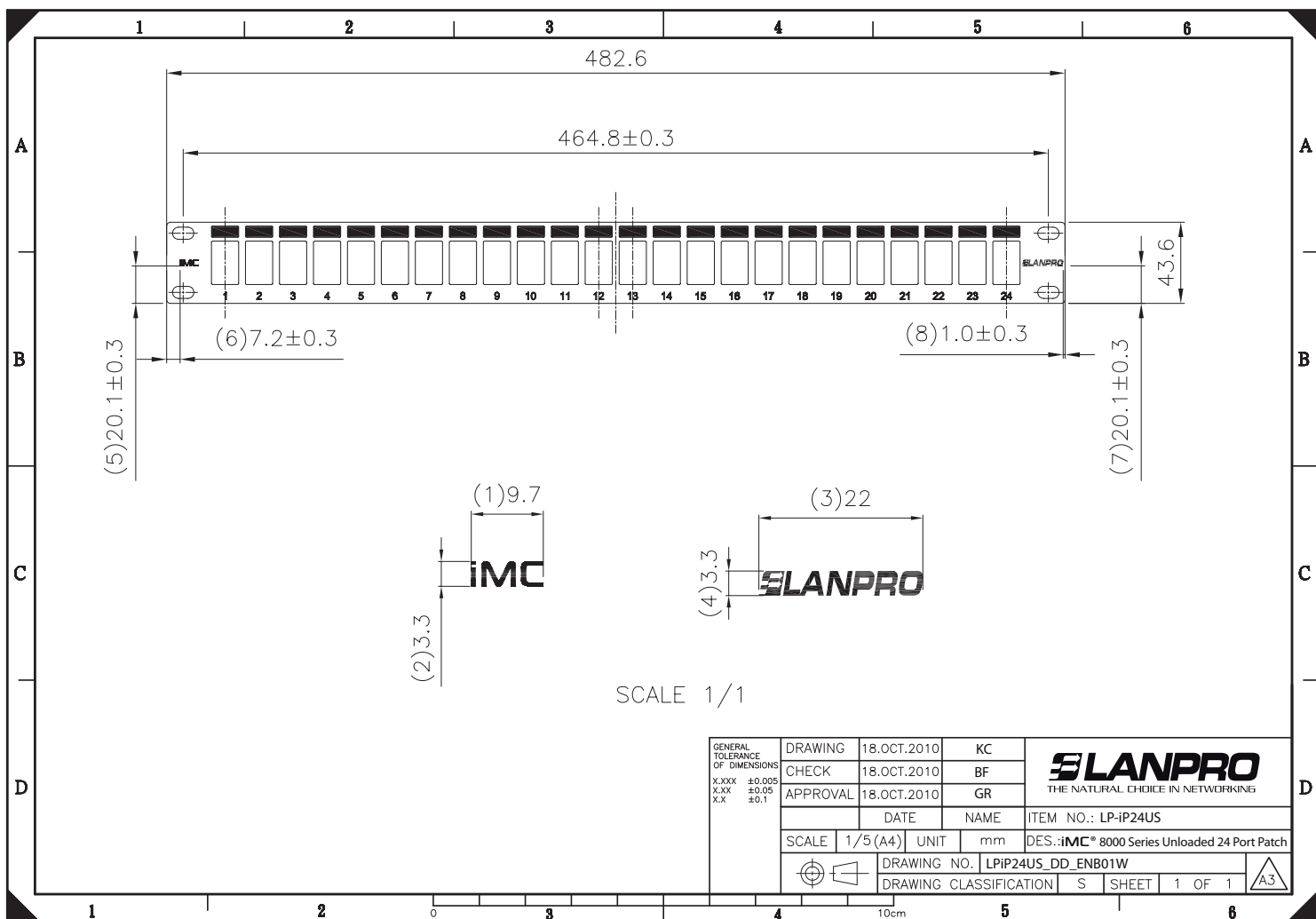
A Specifications

Materials/Paint	
Support Bar	SPCC, 1.5 mm thickness black color painted
Panel	SPCC, 1.5 mm thickness black color painted
Insert	ABS,UL 94V-0, black color
Dimensions	
Width	19 inch, 464.8+0.2 mm between mounting holes
Height	16 and 24 Port: 1 RU, 43.6+-0.3 mm 48 Port: 2 RU, 87.6+-0.3 mm
Depth	16 & 24 port: 92.7 +-0.5 mm 48 port: 110.2+-0.3 mm
Environmental	Ratings
Storage	-40°C to +85°C
Operation	-40°C to +85°C

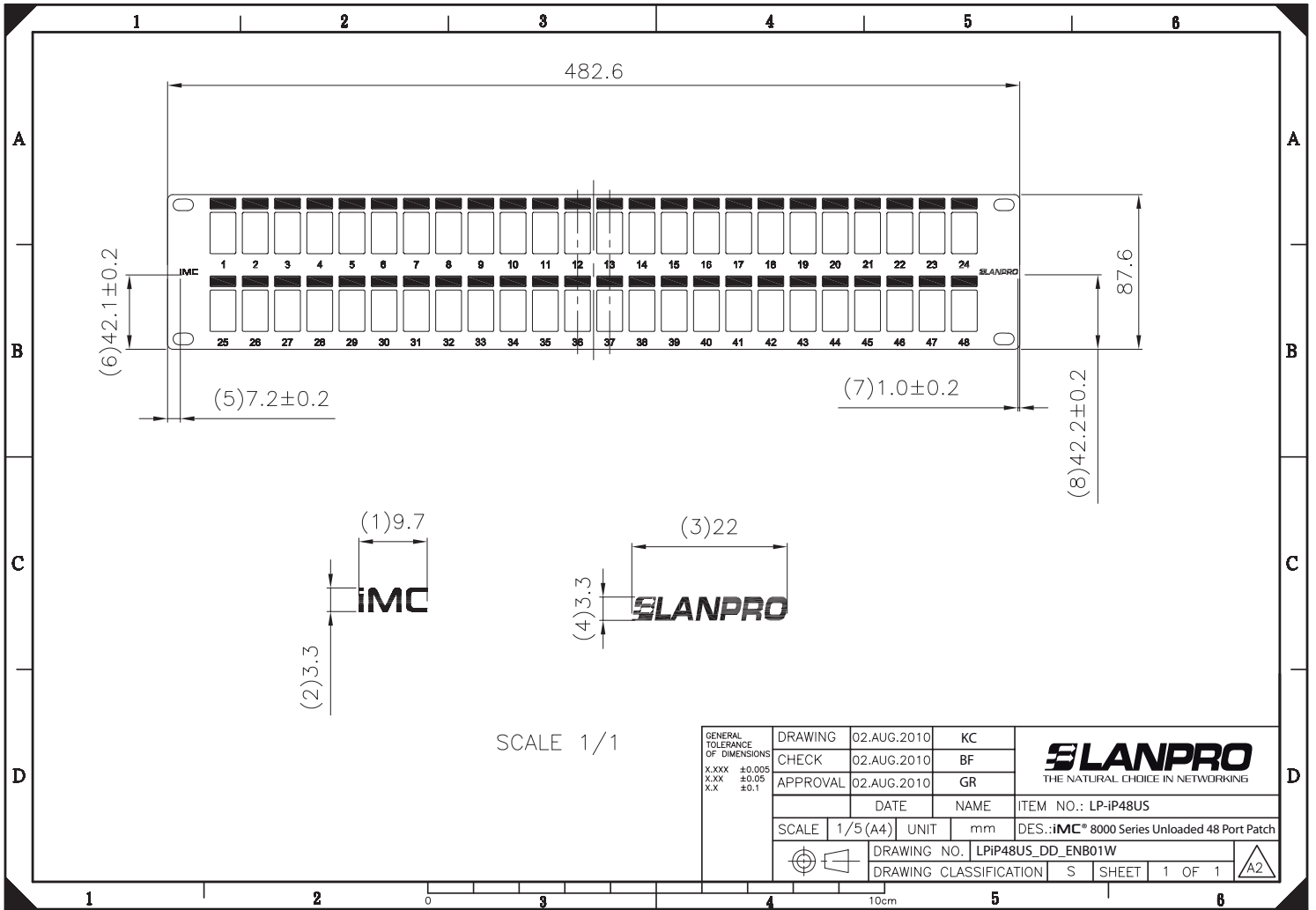
B Mechanical Drawings



LP-IP16US 16 port iMC® 8000 Series Unloaded, Unshielded Modular Compatibility Patch Panel for Mixed Cat3 to Cat6A, Audio, Video and Fiber Optic Modules.



LP-IP24US 24 port iMC® 8000 Series Unloaded, Unshielded Modular Compatibility Patch Panel for Mixed Cat3 to Cat6A, Audio, Video and Fiber Optic Modules.



LP-iP48US 48 port iMC® 8000 Series Unloaded, Unshielded Modular Compatibility Patch Panel for Mixed Cat3 to Cat6A, Audio, Video and Fiber Optic Adaptor Modules.

C How to Order

LP-iPXXUS XX port iMC® 8000 series Unloaded Unshielded Modular Compatibility Patch Panel for Mixed CAT 3 to CAT 6A, Audio, Video and Fiber Optic Adaptor Modules.

LP-iP16US 16 port iMC® 8000 series Unloaded Unshielded Patch Panels with 16 ports for iMC® interchangeable and Mixed CAT 3 to CAT 6A, Audio, Video and Fiber Optic Adaptor Modules.

LP-iP24US 24 port iMC® 8000 series Unloaded Unshielded Patch Panels with 24 ports for iMC® interchangeable and Mixed CAT 3 to CAT 6A, Audio, Video and Fiber Optic Adaptor Modules.

LP-iP48US 48 port iMC® 8000 series Unloaded Unshielded Patch Panels with 48 ports for iMC® interchangeable and Mixed CAT 3 to CAT 6A, Audio, Video and Fiber Optic Adaptor Modules.