

LP-iPXXFS

iMC® 8000 Series Unloaded shielded Modular Patch Panels with 24 or 48 ports for iMC® interchangeable and Mixed CAT 3 to CAT 6A, Audio, Video and Fiber Optic Adaptor Modules.

LPiPXXFS_SS_ENB01W

Features

- 24 or 48 Port for **iMC®** Keystone type Modules of video, sound, optical fiber or UTP CAT 3 to CAT 6A jacks.
- LP-iPXXFS series is specially designed for shielded copper networks.
- Can be custom-made for 72 and 96 ports or special color schemes.
- 19" rack mountable, using 1U or 2 U vertical space on the rack.
- For multimedia compatible applications **iMC® Modular Compatibility.**
- Available flat and angle version.
- Complies with TIA/EIA 568D 10G and ISO/IEC 11801 standards.
- UL approved.
- Modular patch panel with 24, 48, 96 ports, metallic, shielded with ground terminal connection, supports CAT 3 Jacks up to CAT 6A or higher, as well as audio, video and fiber optics.
- Available shielded and unshielded.



LP-iPXXFS
iMC® 8000 Series Unloaded shielded Modular Patch Panels with 24 or 48 ports for iMC® interchangeable and Mixed CAT 3 to CAT 6A, Audio, Video and Fiber Optic Adaptor Modules.

The **iMC® 8000 Series of Interchangeable Modular Components** is a flexible system of modules designed with multimedia + data needs in mind and which **key feature** is the **inherent interchangeability and configurability in the field**. Using the full line of iMC® modules, the panels can be configured for a variety of multimedia applications. Blank modules may be used to reserve ports for future applications.

The user can mix-in any combination of Keystone® sized Fiber Optic, audio, Video modules besides the standard CAT 3 to CAT 6A UTP data networking jacks to obtain the exact performance level required for providing true multimedia capabilities all in one patch panel frame.

LanPro recommends the use of series 8000 RJ45 connectors on **iMC®** patch panels for compatibility.

The **iMC® 8000 Series** of 24 or 48 port Unloaded shielded Patch panel for Keystone® compatible Modules by LanPro are made to the most stringent specifications in order to give a long lasting service to your **iMC®** structured cabling installation.

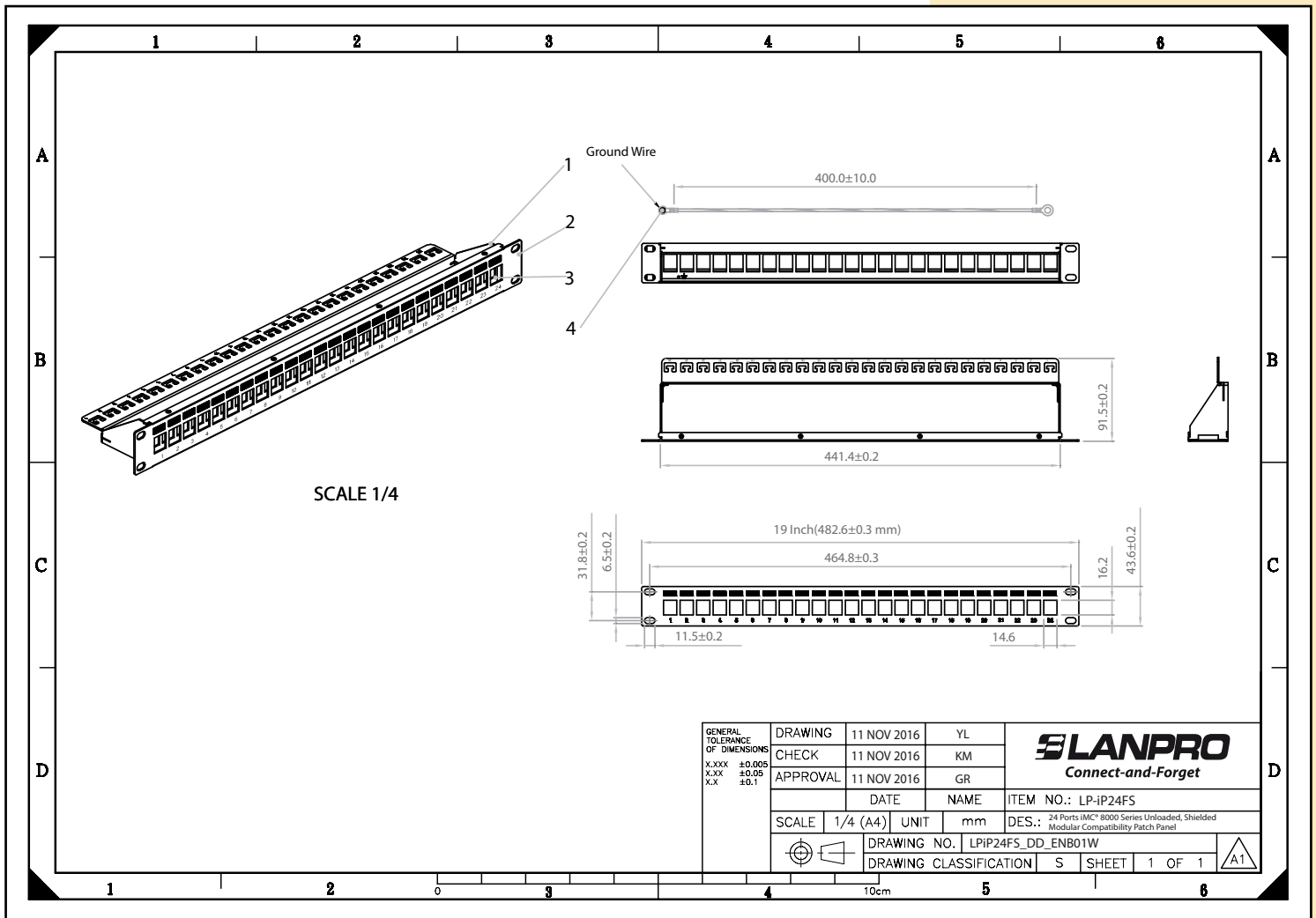
Built with excellent workmanship standards, they include the best materials and finishes that will comply with the Industry Standards of quality and performance.

No detail has been left behind in the design and manufacture of this product.

A Specifications

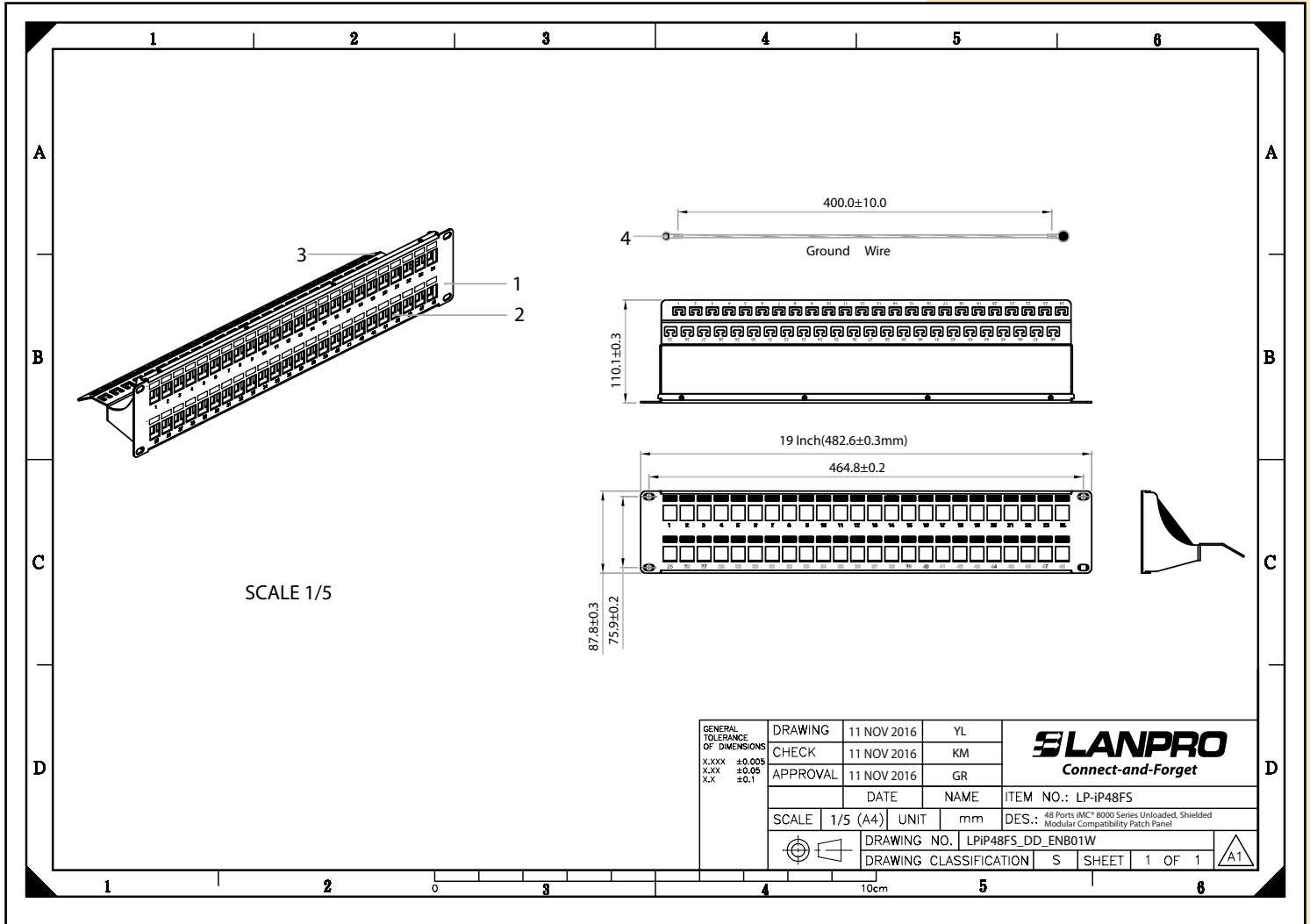
Materials / Paint	
Support Bar	SPCC, 1.5 mm thickness black color painted
Panel	SPCC, 1.5 mm thickness black color painted
Rear Panel	SPCC, 1.5 mm thickness black color painted with 5-8um Nickel plated
Ground Bar	AWG 18 wire, green/yellow striped color, 40cm length
Dimensions	
Width	19 inches, 464.8 ± 0.2 mm between mounting holes.
Height	24 ports: 1U, 43.6 ± 0.2 mm 48 ports: 2U, 87.8 ± 0.3 mm
Depth	24 ports: 91.5 ± 0.2 mm 48 ports: 110.1 ± 0.3 mm
Environmental	
Storage	-40°C to + 85°C
Operation	-40°C to + 85°C

B Dimensional Drawings



LP-iP24FS - 24 ports iMC® 8000 Series Unloaded, shielded Modular Compatibility Patch Panel for Mixed CAT 3 to CAT 6A, Audio, Video and Fiber Optic Modules.

C Dimensional Drawings



LP-iP48FS – 48 ports iMC® 8000 Series Unloaded, shielded Modular Compatibility Patch Panel for Mixed CAT 3 to CAT 6A, Audio, Video and Fiber Optic Modules.

D How to order

LP-iP24FS 24 ports iMC® 8000 Series Unloaded, shielded Modular Compatibility Patch Panel for Mixed CAT 3 to CAT 6A, Audio, Video and Fiber Optic Modules.

LP-iP48FS 48 ports iMC® 8000 Series Unloaded, shielded Modular Compatibility Patch Panel for Mixed CAT 3 to CAT 6A, Audio, Video and Fiber Optic Modules.