

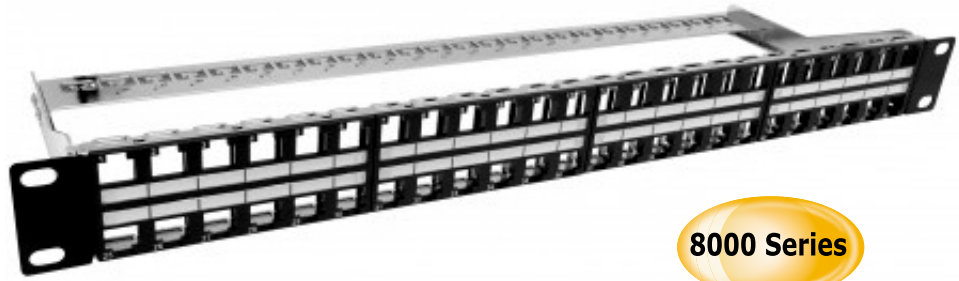
## LP-iP48FS21U

**iMC® 8000 Series Unloaded shielded Patch Panels with 48 ports 1U for iMC® interchangeable and Mixed CAT 3 to CAT 6A, Audio, Video and Fiber Optic Adaptor Modules**

LPIP48FS21U\_SS\_ENB01W

**Features**

- 48 ports 1U for iMC® Keystone type Modules of video, sound, optical fiber or UTP CAT 3 to CAT 6A jacks.
- LP-iP48FS21U series is specially designed for shielded copper networks.
- Can be custom-made for 72 and 96 ports or special color schemes.
- 19" rack mountable, using 1U vertical space on the rack.
- For multimedia compatible applications iMC® Modular Compatibility.

**iMC®****LP-iP48FS21U****iMC® 8000 Series Unloaded shielded Patch Panels with 48 ports 1U for iMC® interchangeable and Mixed CAT 3 to CAT 6A, Audio, Video and Fiber Optic Adaptor Modules**

The **iMC® 8000 Series of Interchangeable Modular Components** is a flexible system of modules designed with multimedia + data needs in mind and which **key feature** is the inherent **interchangeability and configurability in the field**. Using the full line of **iMC®** modules, the panels can be configured for a variety of multimedia applications. Blank modules may be used to reserve ports for future applications.

The user can mix-in any combination of Keystone® sized Fiber Optic, audio, Video modules besides the standard CAT 3 to CAT 6A UTP data networking jacks to obtain the exact performance level required for providing true multimedia capabilities all in one patch panel frame.

LanPro recommends the use of series 8000 RJ45 connectors on **iMC®** patch panels for compatibility.

The **iMC® 8000 series** of 48 ports 1U Unloaded shielded Patch panel for Keystone® compatible Modules by LanPro are made to the most stringent specifications in order to give a long-lasting service to your **iMC®** structured cabling installation.

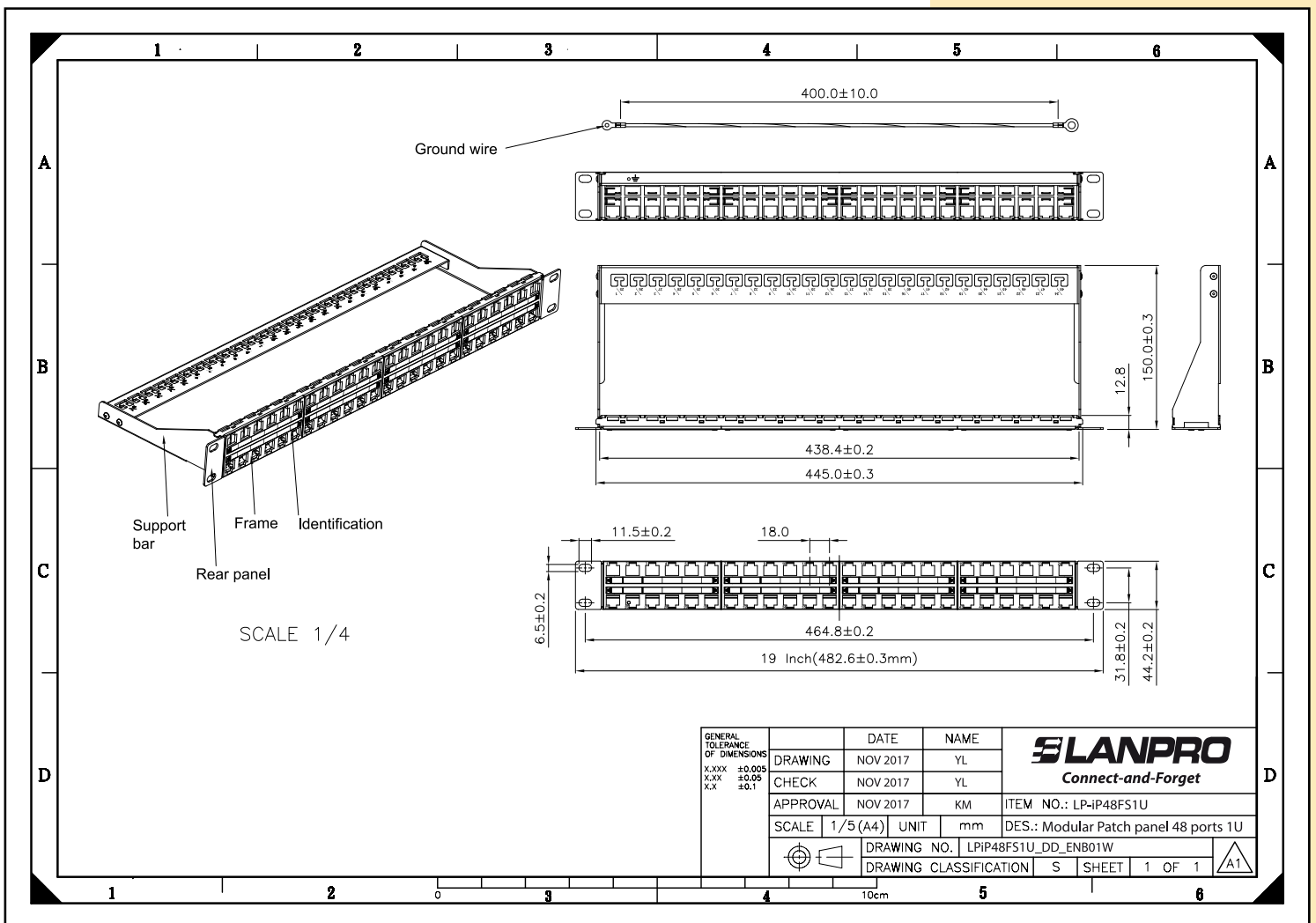
Built with excellent workmanship standards, they include the best materials and finishes that will comply with the Industry Standards of quality and performance.

No detail has been left behind in the design and manufacture of this product.

**A Specifications**

Materials / Paint	
Support Bar	SPCC, 1.5 mm thickness with 5-8um Nickel plated
Rear Panel	SPCC, 1.5 mm thickness with 5-8um Nickel plated and black color
Ground Wire	AWG 18 wire, green/yellow striped color, 40cm length
Frame	ABS-HB
Environmental	
Storage	-40°C to + 85°C
Operation	-40°C to + 85°C

**B Dimensional Drawing:**



**C** How to order:

**LP-iP48FS21U 48 ports 1U iMC® 8000 Series Unloaded, Shielded Modular Compatibility Patch Panel for Mixed CAT 3 to CAT 6A, Audio, Video and Fiber Optic Modules.**