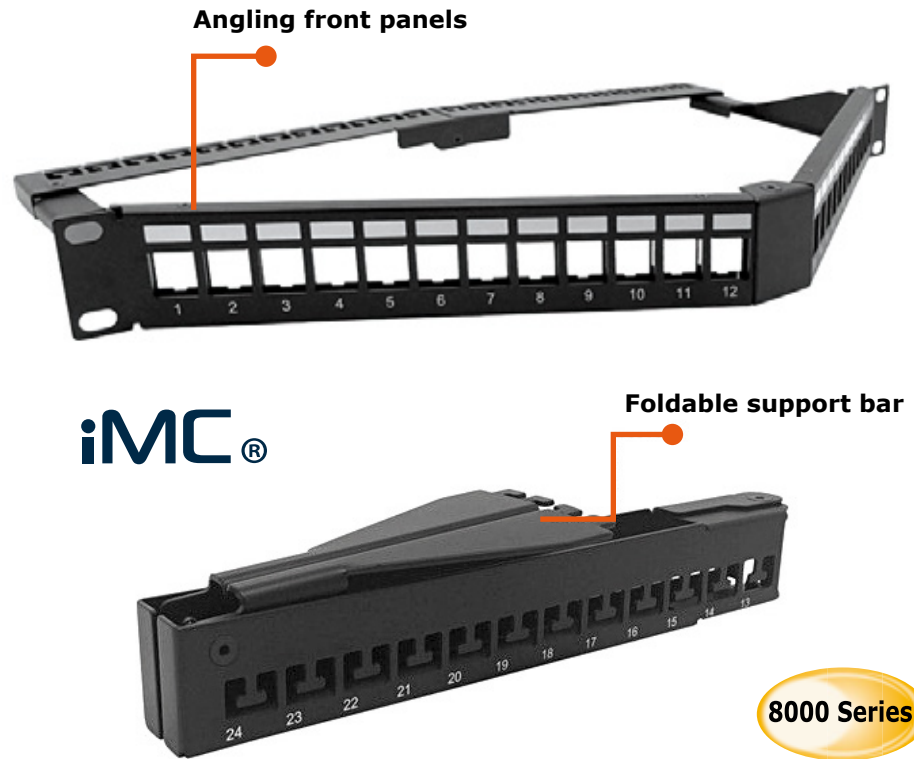


LP-IP24FS1 iMC® 8000 Series Unloaded Patch Panels with 24 ports shielded angled for iMC® interchangeable and Mixed CAT 3 to CAT 6A, Audio, Video and Fiber Optic Adaptor Modules.

LPIP24FS1_SS_ENB01W

Features

- Patch panels provide a higher density connectivity fill into cabinets and racks in limited spaces.
- Angling the port panels allows the cables to flow into the vertical cable Managements in an organized.
- Style, reducing the demand for horizontal cable management.
- The network jack panel is equipped user-friendly label reduces installation time.
- The rear cable management keeps cable neat and efficient.
- 1U 24port Angled shielded type for ethernet keystone.



**LP-IP24FS1
iMC® 8000 Series Unloaded Patch Panels with 24 ports shielded angled for iMC® interchangeable and Mixed CAT 3 to CAT 6A, Audio, Video and Fiber Optic Adaptor Modules.**

LanPro unloaded 1U 24 ports shielded Angled rackmount cabling patchpanel is an angled, keystone style patch panel.

This design allows for smooth routing of patch cables to vertical CAT 3 to CAT 6A cable troughs, without the need for additional front cable management, saving valuable rack space and offers a high-density solution.

The SPCC material effectively guarantees the mechanical strength. Snap-in structure, easy to install and unload from the module allows for quick disconnect and repositioning. The empty rack mount panels are available to snap in keystone jacks or inline couplers also included a rear cable management bar, that secures the home run cable to the assembly, taking the strain off the jacks provide more flexibility for customizing the installation.

A Specifications

Materials / Paint

Support Bar	SPCC, 1.5 mm thickness black color painted
Panel	SPCC, 1.5 mm thickness black color painted
Rear Panel	SPCC, 1.5 mm thickness black color painted with 5-8um Nickel plated
Ground Bar	AWG 18 wire, green/yellow striped color, 40cm length

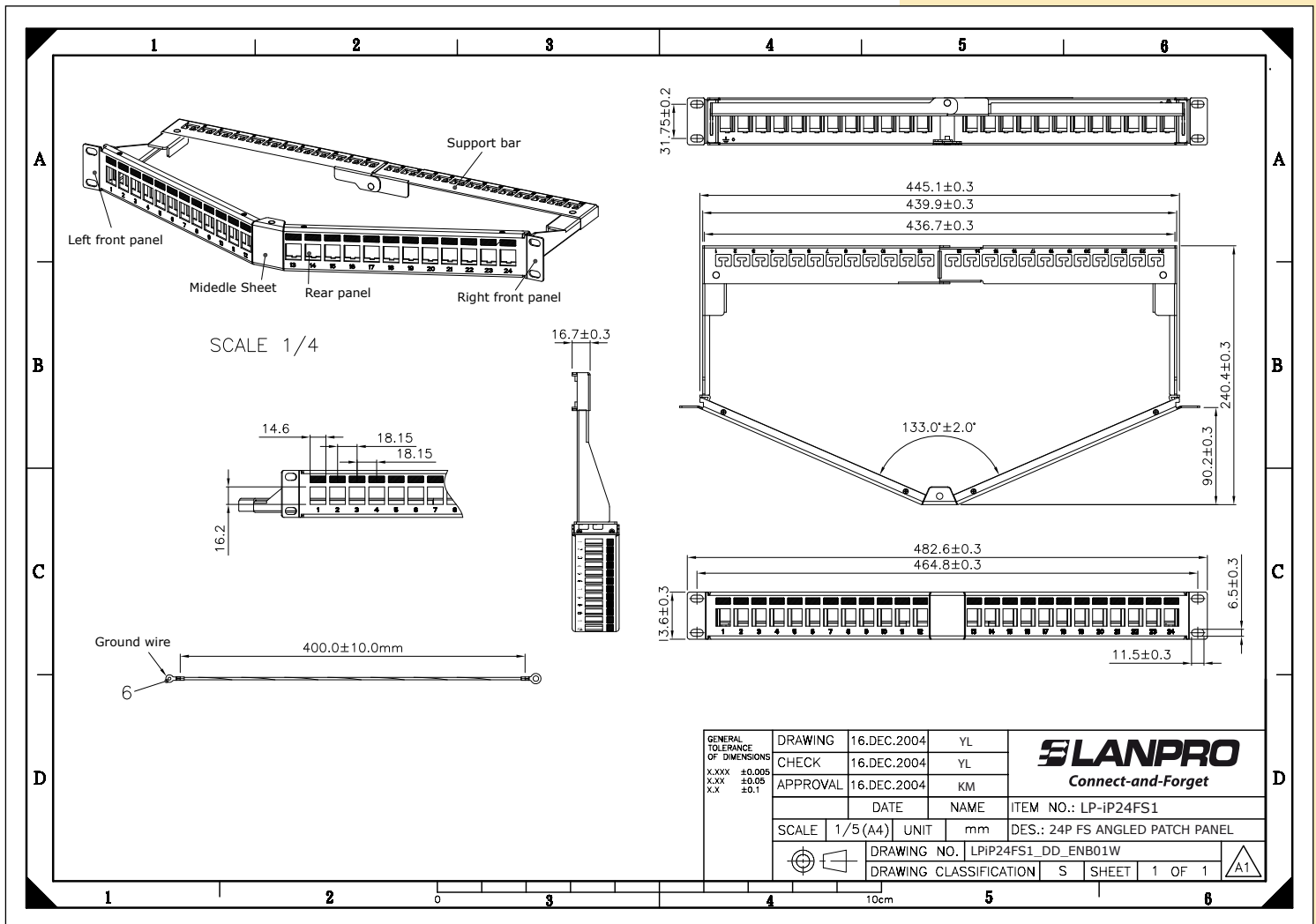
Dimensions

Width	19 inches
Height	24 ports: 1U

Environmental

Storage	-40°C to + 85°C
Operation	-40°C to + 85°C

B Dimensional Drawings



C How to order

LP-iP24FS1 iMC® 8000 Series Unloaded Patch Panels with 24 ports shielded angled for iMC® interchangeable and Mixed CAT 3 to CAT 6A, Audio, Video and Fiber Optic Adaptor Modules.