

LP-iAKCEUSCC

iMC® CAT 5e 8P8C RJ45, Keystone® Compatible Unshielded Jack, 180° IDC.

LPIAKCEUSCC_SS_ENB01W

Features

- iMC® system component.
- Fit for CAT 5e general cable distribution system, backward compatible with CAT 5 systems.
- Compliant with ISO/IEC 11801. 2002 CLASS & ANSI/TIA 568-B.2 CAT 5e T568-A and T568-B punching sequences are both compatible. Compliant with IEC 60603-7-4.
- Our standard style allows compatibility with many other brands and systems.
- Unshielded, rugged.
- Connection type FCC connector for RJ45 patch cords and IDC for 4-pair CAT 5e cables.
- High performance phosphor bronze contacts & 50 micro-inches of gold plating.
- 750 mating cycles minimum for RJ45.
- 200 mating cycles minimum for IDC.
- Competitively priced.
- Material: ABS UL94V-0.
- Positive latch system.
- UTP capable.
- Compatible with 110 punch-down tools.
- Suitable for 22-24 AWG solid cable.
- Eight vivid colors to choose from.

**iMC®**

LP-iAKCEUSCC
iMC® CAT 5e 8P8C RJ45, Keystone®
Compatible Unshielded Jack, 180° IDC.

The iMC® CAT 5e 8P8C RJ45, Keystone® Compatible Unshielded Jacks with 180° IDC are compatible with our iMC® line of patch panels and flat and angled faceplates.

LanPro has designed them specifically for high speed and bandwidth in excess of 100 MHz.

Our modular CAT 5e iMC® Jacks are designed to match our CAT 5e compatible products in a perfect way. All CAT 5e devices are very adaptable to customer changing requirements.

Our modular CAT 5e iMC compatible Jacks allow for universal termination, either T568-A or T568-B, and are punch-down design 180°, thus offering easiness and flexibility to the installer.

Notice: All our Jacks are also suitable for CAT 3 cabling system.

A Specifications

- 1.-Keystone Jack, CAT 5e, UTP type, 180° punching direction, for connecting application of communications ports in working area.
- 2.- Compact and practical design.
- 3.- Punch directions are a quick guide for the punching and connection operation.
- 4.-Fastener hats ensure proper fixation of IDC clips.
- 5.- Compliance of ISO/IEC 11801. ANSI/TIA/EIA 568-B.2 CAT 5e for both T568-A and T568-B punching sequences.
- 6.-Connection type: FCC Connector for RJ45 patch cord and IDC for 4-pair CAT 5e cables.
- 7.-Fit for CAT 5e general cable distribution system. Backward compatible with CAT 5 systems.
- 8.-Plastic material: ABS.
- 9.-Connector pin material: Phosphor bronze with golden cladding. 50 micro-inches minimum.
- 10.-RJ45: 750 insertion cycles minimum.
- 11.-IDC materials: Tinned phosphor bronze pins.
- 12.-For punching AWG 22 to AWG 24 cables, punching short type.
- 13.-IDC: 200 insertion cycles minimum.
- 14.-Punch tool: 110.
- 15.-iMC® system component.

● Dimensions:

- 1.-Width: 16.4 mm.
- 2.-Height: 19.6 mm.
- 3.-Depth: 32.7 mm.

Note: The micro-inch (μ in) is a common imperial unit of distance equal to one millionth of an inch, or 25.4 nanometers (nm), or 1μ in = 0.0254 μ m.

B Different colors



Figure 1

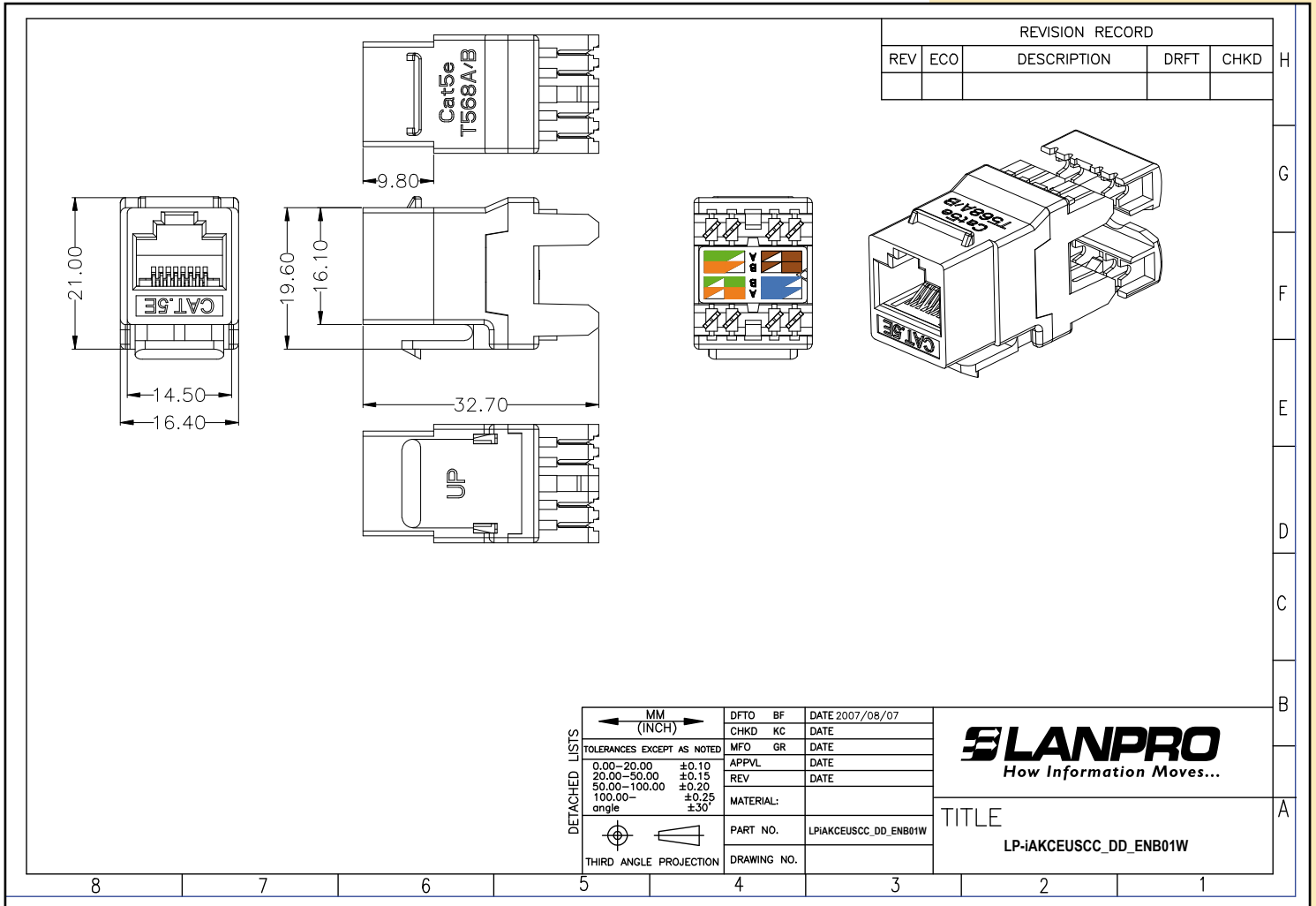


Figure 2



Figure 3

C Dimensional Drawing



D How to Order

LP-iAKCEUSCC iMC® CAT 5e 8P8C RJ45, Keystone® Compatible Unshielded Jack, 180° IDC.

CC:	Color
WH:	White
GN:	Green
YL:	Yellow
BL:	Blue
RD:	Red
BK:	Black
GR:	Gray
OR:	Orange

Example:

LP-iAKCEUSWH iMC® CAT 5e 8P8C RJ45, Keystone® Compatible Unshielded Jack, 180° IDC, White Color.

LP-iAKCEUSGN iMC® CAT 5e 8P8C RJ45, Keystone® Compatible Unshielded Jack, 180° IDC, Green Color.

LP-iAKCEUSYL iMC® CAT 5e 8P8C RJ45, Keystone® Compatible Unshielded Jack, 180° IDC, Yellow Color.

LP-iAKCEUSBL iMC® CAT 5e 8P8C RJ45, Keystone® Compatible Unshielded Jack, 180° IDC, Blue Color.

LP-iAKCEUSRD iMC® CAT 5e 8P8C RJ45, Keystone® Compatible Unshielded Jack, 180° IDC, Red Color.

LP-iAKCEUSBK iMC® CAT 5e 8P8C RJ45, Keystone® Compatible Unshielded Jack, 180° IDC, Black Color.

LP-iAKCEUSGR iMC® CAT 5e 8P8C RJ45, Keystone® Compatible Unshielded Jack, 180° IDC, Gray Color.

LP-iAKCEUSOR iMC® CAT 5e 8P8C RJ45, Keystone® Compatible Unshielded Jack, 180° IDC, Orange Color.