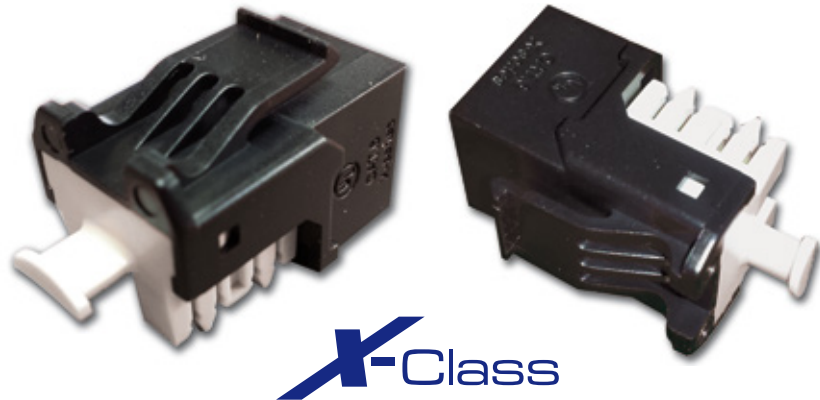


LP-XC6PUSXX
8000 Series CAT 6 8P8C RJ45, X-Class Robotic Manufactured Keystone®
Compatible Unshielded Jack, 90° IDC.

LPXC6PUSXX_SS_ENB01W

Features

- Fit for CAT 6 general cable distribution system, backward compatible with CAT 5e, CAT 5 and CAT 3 systems.
- Compliant with ISO/IEC 11801. 2002 CLASS & ANSI/TIA 568-C.2 CAT 6 T568-A and T568-B punching sequences are both compatible.
- Compliant with IEC 60603-7-4.
- UL® and ULc® certified under number# DUXR.E329018.
- Our standard style allows compatibility with many other brands and systems.
- Unshielded, rugged.
- Connection type FCC connector for RJ45 patch cords and IDC for 4-pair CAT 6 cables.
- High performance copper alloy contacts with 50 microinches of gold plating.
- 750 mating cycles minimum for RJ45.
- 250 mating cycles minimum for IDC.
- Competitively priced.
- Material: ABS UL94V-0.
- Positive latch system.
- UTP capable.
- Compatible with 110 punch down tools.
- Suitable for 23-26 AWG solid and stranded cable.
- Nine (9) vivid colors to choose from.



LP-XC6PUSXX

8000 Series CAT 6 8P8C RJ45, X-Class Robotic Manufactured
Keystone® Compatible Unshielded Jack, 90° IDC.

The CAT 6 8P8C RJ45, X-Class Robotic Manufactured Keystone® Compatible Unshielded Jack with 90° IDC are also compatible with our iMC® line of patch panels and flat and angled faceplates.

LanPro has designed them specifically for high speed and bandwidth in excess of 250 MHz. Our modular CAT 6 X-Class Jacks are designed to match our CAT 6 compatible products in a perfect way. All CAT 6 devices are very adaptable to customer changing requirements.

UL® and ULc® certified under number# DUXR.E329018. Our modular CAT 6 X-Class compatible Jacks allow for universal termination, either T568-A or T568-B, and are punch down design 90°, thus offering easiness and flexibility to the installer.

Notice: All our Jacks are also suitable for CAT 3 cabling system. Our traditional jacks have been the industrial standard for the last 20 years.

We have sold hundreds of thousands of them worldwide with a huge success. But products evolve due technology/cost improvements and become obsolete and are replaced by ones with better performance.

We decided to completely redesign the 8000 Series Jacks from scratch and up, with a focus on our customers' complaints, recommendations, and imagination! The new jack is designed to be mechanically stronger. Our most innovative improvement is greater reinforcement surrounding the cable feeder. The jack itself is smaller in size and easier to use. It also includes a narrower RJ45 footprint but maintaining the standard Keystone jack compatibility for the standard fixation to a faceplate or patch panel.

Because the jacks are robotically assembled, there is less human error in the manufacturing process ensuring consistency in product quality. The new jack is significantly smaller, which makes it ideal for even limited spaces.

Moreover, with the carved logo and design, counterfeiting is difficult. The locking latch is more flexible and easier to press, but it's still reliable.

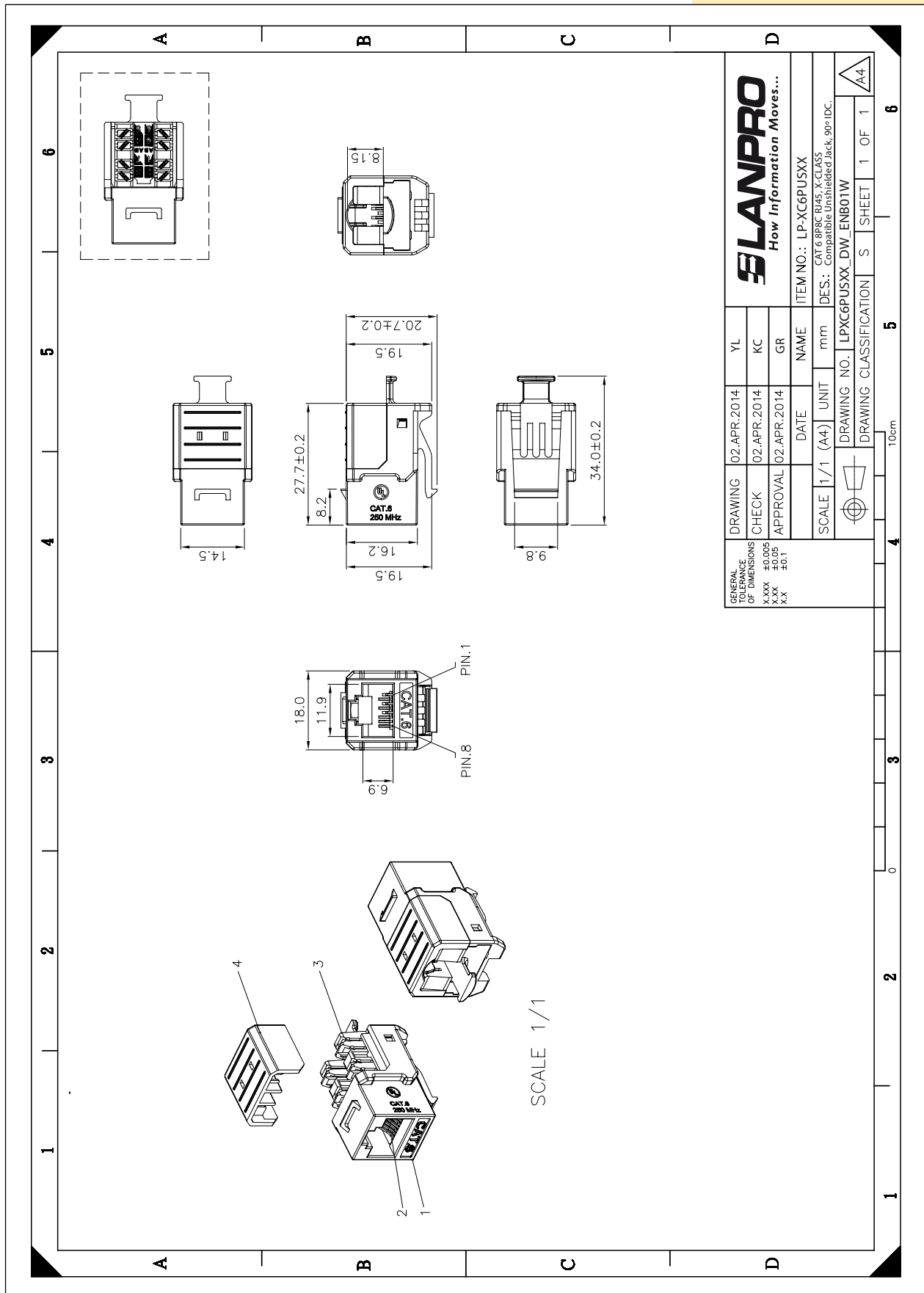
A Specifications:

Material	RJ45 Jack	Housing	ABS + PC, UL 94V-0, With optional Color	
		Contact Bracket	PBT+Glasss Fiber, UL 94V-0 with Black Color	
	RJ45 Contact	Material	Phosphor Bronze with Nickel Plating	
		Finish	50 Micro-inch Gold Plating on plug contact area	
	IDC	Housing	PC+Glass Fiber, Grey Color(RAL7035), UL 94V-2	
		Terminales	Phosphor Bronze with Tin Plating	
	IDC Cap	PC 1250Y UL 94 V-2, Transparent Black		
PCB	FR4, UL 94V-0			
Performance	T568A & T568B wiring			
	Insertion Force	20N max. (IEC 60603-7-4)		
	Retention Strength	7.7 Kg between Jack and Plug		
	Operating Temperature	-10 °C a 60 °C. (ISO/IEC 11801, ANSI/TIA 568 C.2)		
	Life (Mating Cycles)	Jack	750 Cycles min. (ISO/IEC 11801, IEC 60603-7-4)	
		IDC	250 Cycles min. Suitable for 23-26 AWG stranded and solid wire, compatible with 110 punch down tool	
The CAT 6 transmission performance is in compliance with the ANSI/TIA 568C.2 standard				

1	Keystone Jack, CAT 6, UTP type, 90° punching direction, for connecting applications of communication ports in working area.		
2	Compact and practical design.		
3	Fastener hats ensure proper fixation of IDC clips.		
4	Compliance of ISO/IEC 11801. ANSI/TIA/EIA 568-B.2 CAT 6 for both T568-A and T568-B punching sequences.		
5	UL® and ULc® certified under number# DUXR.E329018.		
6	Connection type: FCC Connector for RJ45 patch cord and IDC for 4-pair CAT 6 cables.		
7	Fit for CAT 6 general cable distribution system. Backward compatible with CAT 5e and CAT 5 systems.		
8	Punch tool: 110 & Kröne.		
9	Dimensions	Width: 17.0 mm	
		Heigth: 19.6 mm.	
		Depth: 28.0 mm.	
10	Colors	WH= White; BK= Black; OR=Orange; RD= Red; GN= Green, BL= Blue; GR= Grey; YL= Yellow; IV= Ivory	

Note: The microinch (μ in) is a common imperial unit of distance equal to one millionth of an inch, 25.4 nanometers (nm), or 1 μ in = 0.0254 μm.

B Dimensional Diagram:



GENERAL TOLERANCE OF DIMENSIONS X.XXX ±0.005 X.XX ±0.05 X.X ±0.1	DRAWING	02.APR.2014	YL	<p>LANPRO How Information Moves...</p>	ITEM NO.:	LP-XC6PUSXX
	CHECK	02.APR.2014	KC		DES.:	CAT 6 995C BUIS X CLASS Compatible Unshielded Jack, 90° IDC.
	APPROVAL	02.APR.2014	GR		DRAWING NO.:	LPXC6PUSXX-DW-ENB01W
SCALE		1/1 (A4)	UNIT	mm	DRAWING CLASSIFICATION	S SHEET 1 OF 1
					SHEET 1 OF 1 	

C How to Order:

LP-XC6PUSWH	8000 Series CAT 6 8P8C RJ45, X-Class Robotic Manufactured Keystone® Compatible Unshielded Jack, 90° IDC, White Color.
LP-XC6PUSBK	8000 Series CAT 6 8P8C RJ45, X-Class Robotic Manufactured Keystone® Compatible Unshielded Jack, 90° IDC, Black Color.
LP-XC6PUSOR	8000 Series CAT 6 8P8C RJ45, X-Class Robotic Manufactured Keystone® Compatible Unshielded Jack, 90° IDC, Orange Color.
LP-XC6PUSRD	8000 Series CAT 6 8P8C RJ45, X-Class Robotic Manufactured Keystone® Compatible Unshielded Jack, 90° IDC, Red Color.
LP-XC6PUSGN	8000 Series CAT 6 8P8C RJ45, X-Class Robotic Manufactured Keystone® Compatible Unshielded Jack, 90° IDC, Green Color.
LP-XC6PUSBL	8000 Series CAT 6 8P8C RJ45, X-Class Robotic Manufactured Keystone® Compatible Unshielded Jack, 90° IDC, Blue Color.
LP-XC6PUSGR	8000 Series CAT 6 8P8C RJ45, X-Class Robotic Manufactured Keystone® Compatible Unshielded Jack, 90° IDC, Gray Color.
LP-XC6PUSYL	8000 Series CAT 6 8P8C RJ45, X-Class Robotic Manufactured Keystone® Compatible Unshielded Jack, 90° IDC, Yellow Color.
LP-XC6PUSIV	8000 Series CAT 6 8P8C RJ45, X-Class Robotic Manufactured Keystone® Compatible Unshielded Jack, 90° IDC, Ivory Color.