

LP-W7C61290USD 12 Port CAT 6 Vertical wall mount mini patch panel. 7000 Series unshielded

LPW7C61290USD_SS_ENB01W

Features

- Verified According to the standard of ISO/IEC 11801:2000 CLASS E and ANSI/TIA/EIA/568B.2-1
- Superior performance to traditional designs.
- With 0° input angle and 180° IDC it is 568-A and 568-B compatible.
- Rugged construction.
- Backwards compatible with CAT 5e systems.
- Black durable and elegant finish.
- Ethernet ready on 10/100/1000-base-T.
- Outstanding price/performance ratio.
- Available with 12 ports.



LP-W7C61290USD 12 Port CAT 6 Vertical wall mount mini patch panel. 7000 Series unshielded

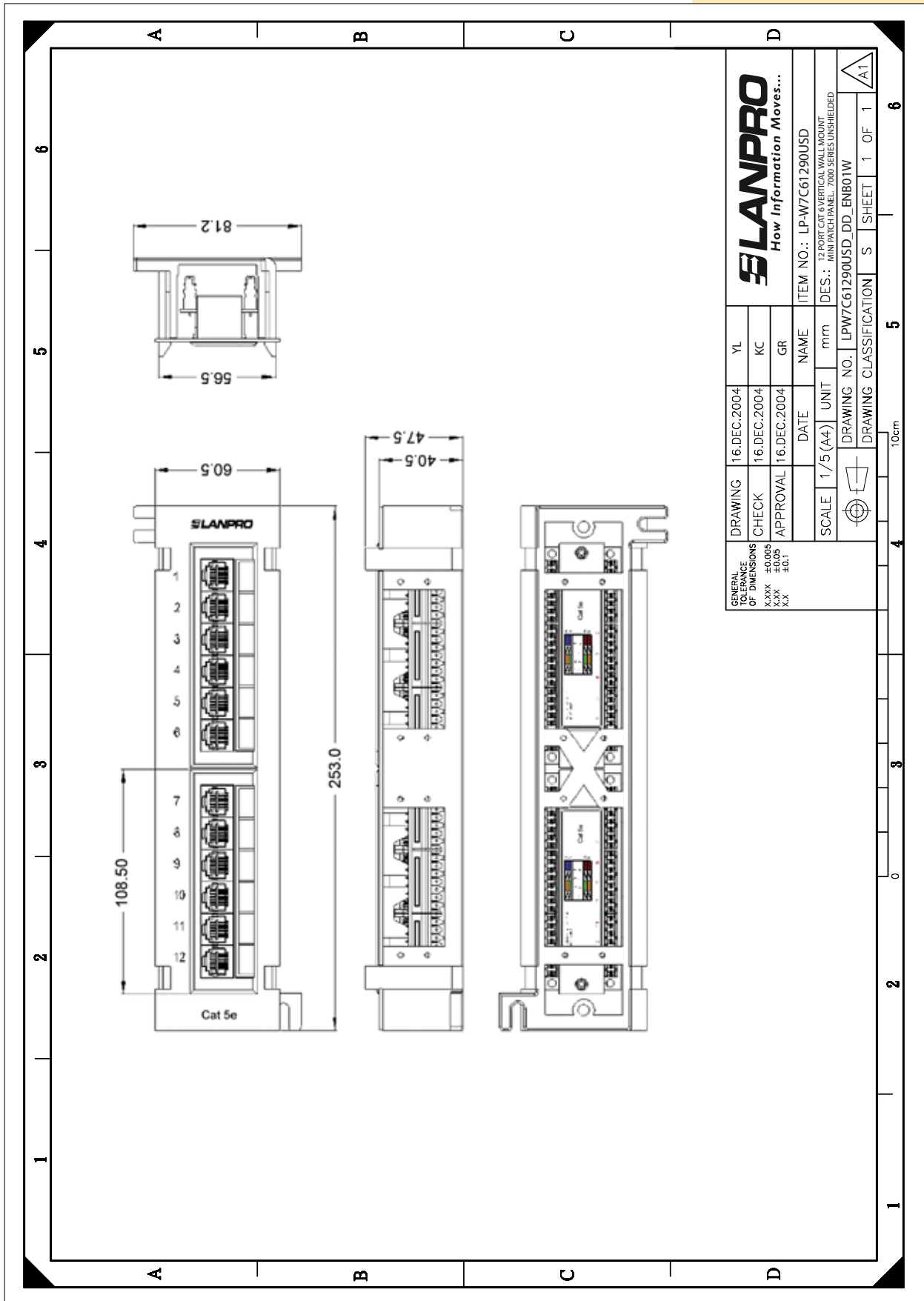
The **LP-W7C61290USD** Vertical Wall Mount CAT 6, 7000 series unshielded 12 Port Mini Patch Panel by LanPro is a very practical assembly that can be wall mounted without the need of a wall box or Rack.

It makes possible to carry up to 12 Cat 6 UTP jacks of structured cabling to an equipment room with a few equipment that needs to be networked.

A Specifications:

General	
Application	Wall mounting for Horizontal cabling termination in equipment room
Ports	12 Keystone compatible 8P8C jacks
Category	UTP CAT 6 FCC port
Backward compatible with	CAT 5e, CAT5
Electrical	
Voltage rating	125 VAC RMS
Current rating	1.5A
Contact Resistance	100 mOhm max
Insulation resistance	1000 MOhm min @ 500 VDC
Dielectric Strength	750 VAC RMS 60 Hz, 1 minuto
Shielding shell of the RJ45 jack	Caja de bronce niquelado
Testing condition of transmitting capability	250MHz
Environment	
Storage	-40°C a 85°C
Operation	0°C a 70°C
Conform to:	ANSI/TIA/EIA-568 B.2-1, Mates with Modular Plug conforming to FCC Part 68
Mechanical	
Panel frame	Entire high-carbon steel outer frame, with plastic powder cladding
RJ45 jack frame material	PBT +15% Glass fibre UL94V-0
RJ45 jack entry angle	0°
Pins material	Gold plated phosphor bronze
Number of insertions	750
IDC	110 type or LSA type for your choice
Punch cycles	250
IDC clip pins	Tinned phosphor bronze
IDC Punch angle	90°
Punch tool to use	Standard 110 tool for 110 IDC, Standard LSA tool for dual IDC
Punch sequence compatibility	T568A y T568B
Wire caliber	22AWG/23AWG/24AWG

B Dimensional Drawing:



C How to Order:

LP-W7C61290USD 12 Port CAT 6 Vertical wall mount mini patch panel. 7000 Series unshielded

<p>■ LP-WSC6AABBCCX</p>		
W	SC5	SC6
<p>W: Wall Mount Mini Patch Panel.</p>	<p>S: 7= 7000 Series C5: CAT 5e</p>	<p>S: 7= 7000 Series C6: CAT 6</p>
AA: Number of Ports	BB: Angle designation	
12	90 = 90 degree	
CC: Shield Level	X: Connection Style	
US: Unshield	D: New 110D	
<p>■ LP-W7C61290USD Cat 6 Vertical Wall Mount Mini Patch Panel (Unshielded)</p>		