

LP-TCRJ458P8CCAFS RJ45 8P8C CAT 6A Fully Shielded Industrial Plug for AWG23 solid wire conductors or AWG26 stranded wire conductors

LPTCRJ458P8CCAFS_SS_ENB01W

Features

- Metal anticorrosive cast housing with complete shielding capabilities. Minimum EM emission.
- Reliable data transmission in high electrical noise (EMI/RFI) locations.
- Dust protection and capable to handle small and big diameter cables.
- Ready for field termination, with basic tools. Can be ready in matter of seconds.
- Extended temperature range: -40°C to 85°C (-40°F to 185°F).
- IP compliance: Rated IP20.
- RoHS Compliant.
- PoE ready: Meets IEEE 802.3af/at and PoE+
- Wiring scheme: T568A/T568B.
- Wide Cable jacket diameter range capable.
- Can be used with all LanPro and recognized brands cables. Solid cable ready.
- LanPro technical support and warranty worldwide.
- Support for using in high density environment with security function when use in public or special area. Help to reduce cost.
- Accommodate big diameter Outdoor LanPro shielded cable (23AWG solid cable, approx. 7.9mm). Also takes smaller cable (26AWG stranded cable, approx. 6.0mm).
- PoE+ design, make it easy to terminate and use.
- Meet the IEC 60512-99-001 Standard. Support of PoE+ remote powering applications.
- Full Metal case ensures air tight shield integrity.



PERFORMAX

LP-TCRJ458P8CCAFS RJ45 8P8C CAT 6A Fully Shielded Industrial Plug for AWG23 solid wire conductors or AWG26 stranded wire conductors

This is an 8-position, 8P8C industrial plug usable on industrial or demanding applications where reliability is of paramount importance. It exceeds the industrial standards 568C.2 and is CAT 6A/6/5 compatible. It also meets the channel requirements of ANSI/TIA-568-C.2 Category 6A and ISO 11801. It passes certification up to 100Mbps with a swept frequency up to 550MHz when used with LanPro CAT 6A shielded cable FTP, U/FTP or S/FTP.

All metal corrosion proof case, and dust cap with IP20 rating. With a safety mechanism to avoid involuntary disconnection. Temperature extended range for the most demanding applications.

It can be terminated with our special tools LPT-AR01.

It is capable of termination to either 2 or 4 pair solid copper twisted cable.

It is not waterproof. Not to be used over 60°C of working temperature. If you need a special version for aerospace or extended temperature range please contact us and will try to provide a solution to your design needs.

A Data Center - Servers Rooms - Connection between Switches

- Within the rack.
- Server-to-switch connections within a row, such as end-of-row or middle-of-row architectures.
- Neighboring racks, stranded ports.

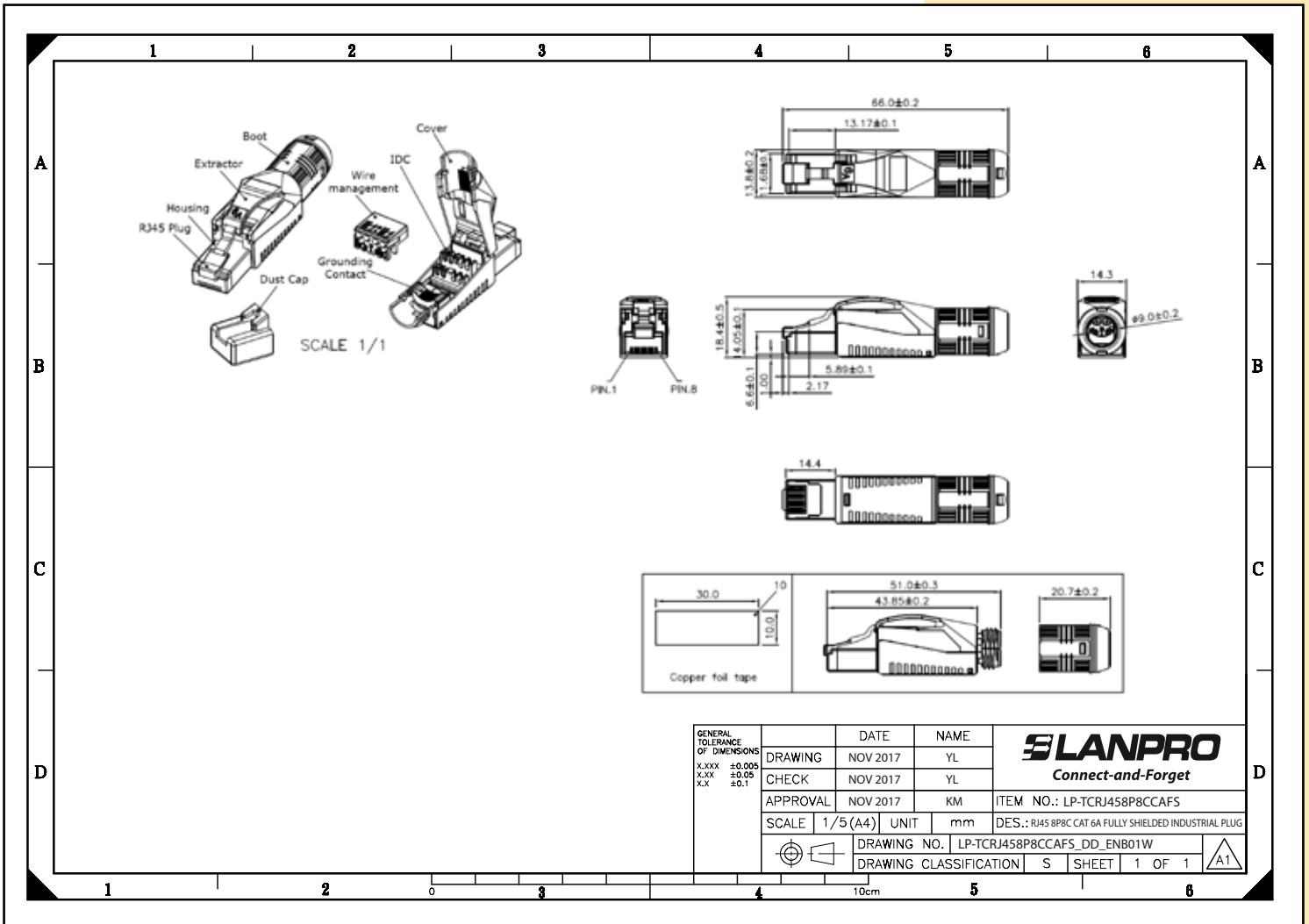
B PoE+, AP, IoT & Other applications

- An existing network needs a fast expansion and be normative compliance.
- A cable link needs to be repaired or replaced.
- A peripheral device needs to be connected quickly. This is the case of Access Points, data radios, WiFi towers, Backbone microwave towers, Cameras and other field equipment that need to comply with the 3 requirements: Shielding and
- Grounding, Ruggedness, Speed.
- Avoid additional costs to the passive network infrastructure when upgrading.
- PoE+ technology enables the monitoring of connected component electrical.

C Specifications

Material	Extractor	PC UL 94-V2, Brown color		
	Housing	Zinc Die-casting with nickel plated		
	Plug RJ45	Housing	PC UL 94-V2, Transparent red color	
		Contact Material	Phosphor bronze with 1000 micro-inch nickel plated	
		Contact finish	Min. 50 micro-inch gold plated on surface contact area	
	Cover	Zinc Die-casting with nickel plated		
	Wire management bar	PC white color UL 94-V2		
	IDC	Housing	PC white color UL 94-V2	
		Terminal	Titanium copper with tin plated	
	Grounding contact	Zinc Die-casting with nickel plated		
	Boot	Housing	Zinc Die-casting with nickel plated	
		SR	PC UL 94-V2, Transparent color	
		CAP	PC UL 94-V2, Black color	
	PCB	UL 94-V0		
Copper foil tape				
Dust cap	PE, black color			
Performance	T568A & T568B wiring			
	Insertion force	30N max. (IEC 60603-7-5)		
	Retention strength	7.7kg between jack and plug		
	Operating Temperature	-10°C a 60°C (ISO/IEC 11801. ANSI/TIA 568 C.2)		
	Life (mating cycles)	750 cycles min (ISO/IEC 11801. IEC 60603-7-5)		
		IDC	Suitable for 23-26AWG stranded and solid wire	
		Insulation diameter	0.91-1.31mm min. 20 installation cycles	
	Suitable for cable jacket OD	6.0-7.5mm.		
The mated plug should comply with IEC60603-7 and TIA-1096 chapter 4 and 5 requirements				

D Dimensional Drawing



E How to order

LP-TCRJ458P8CCAFS RJ45 8P8C CAT 6A Fully Shielded Industrial Plug for AWG23 solid wire conductors or AWG26 stranded wire conductors.