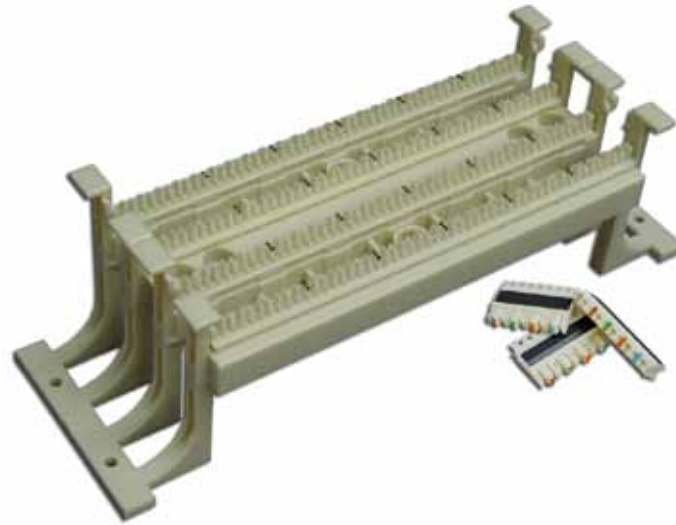


LP-T100L 100 Pair 110 Style Block Wall Mount.

LPT100L_SS_ENB01W

Characteristics

- LanPro 110 field termination kits combine category 5e performance with unparalleled installation features. Each kit includes LP-CK4P and LP-CK5P connecting blocks to complete each 100 pair termination strip. Use AWG 24-26 wire.
- Durable Design - Rugged high impact, flame-retardant UL94V-0. Easily withstands force of impact tools.
- An opening between rows (Patented), allows easy organization and routing of the cables.
- Multi-Application Support - Ideal for use in cross-connect and consolidation point applications.
- Block Markings - Termination strips on the base are marked in 5-pair increments. Connecting blocks are color-coded.
- Compact and Rugged. Easy to install. Lots of clear space for easy wiring. Low impedance at connection point. A very convenient and durable design that ensures reliable connections that require much less maintenance than the competition.
- Includes twenty 4 pair clips and four 5 pair clips.
- Screws, ID labels with holder are also included.
- A 110 punch down tool is required to terminate the wires.
- Color coded for easy wiring.
- Perfect for wiring home and office networks.
- High quality construction.



LP-T100L 100 Pair 110 Style Block Wall Mount

LanPro 110 Connecting Blocks enable you to quickly organize and interconnect phone lines and communication cables. The LanPro 110 Block system is used in equipment rooms or in remote and intermediate wiring closets to connect voice or data wiring to customer premise equipment.

The LanPro 110 block improves on the standard 66 block by supporting higher frequencies and using space more efficiently. Old residential and small offices telephone systems used simple screw terminals to join cables to sockets in a tree topology.

Those screw-terminal blocks have been replaced by 110 blocks and sockets especially on telephone applications. Modern homes usually have the phone service entering the house to a single 110 block. Once there, it is distributed by on-premises wiring to outlet boxes throughout the home in a star topology. At the outlet box, cables are punched down to standard RJ-11 sockets, which fit in special faceplates.

The 110 block is often used at both ends of Category 5e cable runs through buildings. In switch-rooms, 110 blocks are used to connect cables to patch panels. At the other end, 110 connections are found in the modular sockets in faceplates. 110 blocks are preferred over 66 blocks in high-speed networks because they introduce less crosstalk and thus are certified for use in Cat5e systems. LanPro offers 110 blocks only as a way to improve old and odd designs. Made out of UL94V0 Nylon because of its flammability properties. Rugged high-impact design, colored for easy set up. Ideal for use on cross-connect and consolidation points. Very good priced.

A Specifications

Electrical	
Voltage Rating	125 VAC RMS
Current Rating	1.5A
Contact Resistance	100 MILLIOHM Max
Insulation Resistance	1000 MEGOHMS MIN @ 500 VDC
Mechanical	
Base Material	High impact flame-retardant PC UL94V-0
Cable Binder Material	High impact flame-retardant PC UL94V-0
Leg Material	High impact flame-retardant PC UL94V-0
IDC Housing and Plate	High impact flame-retardant PC UL94V-0
Terminals Material	Phosphor Bronze T=0.8mm
Wires	AWG 24-26
General	
Number of Pairs	100
Compliances	<ul style="list-style-type: none"> •Category 5e Component, permanent link and channel requirements of ANSI/TIA/EIA-568-B.2 •Category 5 Component and Class D permanent link and channel requirements of ISO/IEC 11801 Ed2:2002 •UL 94V-0 Nylon
Number of LP-CK4P 4 Pair clips included in Kit	20
Number of LP-CK5P 5 Pair clips included in kit	4
Screws, ID labels with holder	Included
Mounting	Wall mounting, Legged

B How to Order**LP-T100L 100 Pair 110 Style Block Wall Mount**