

# 123 Manual, How to conectarize an Snagless model LP-SRJ458P8CC6US21 RJ45 CAT 6 plug

LPSRJ458P8CC6US21\_M123\_ENB01W

## 1

Please choose the appropriate norm, as shown in **Figure 1**.

### Norm A

White-Green  
 Green  
 White-Orange  
 Blue  
 White-blue  
 Orange  
 White-Brown  
 Brown

### Norm B

White-Orange  
 Orange  
 White -Green  
 Blue  
 White-blue  
 Green  
 White-Brown  
 Brown

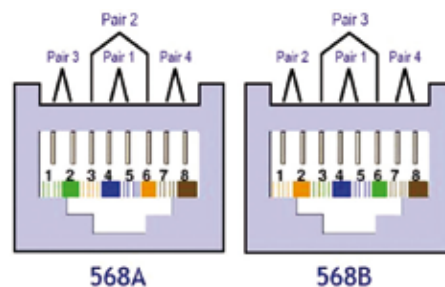


Figure 1

## 2

### Needed tools and components (Figure 2)

- a. Crimper tool
- b. One lenght of UTP CAT 6 Cable
- c. 2 LanPro RJ45 Snagless Connectors model No.: LP-SRJ458P8CC6US21
- d. Cutter tool
- e. Pen
- f. Wire stripper
- g. 1 Lenght measuring tool

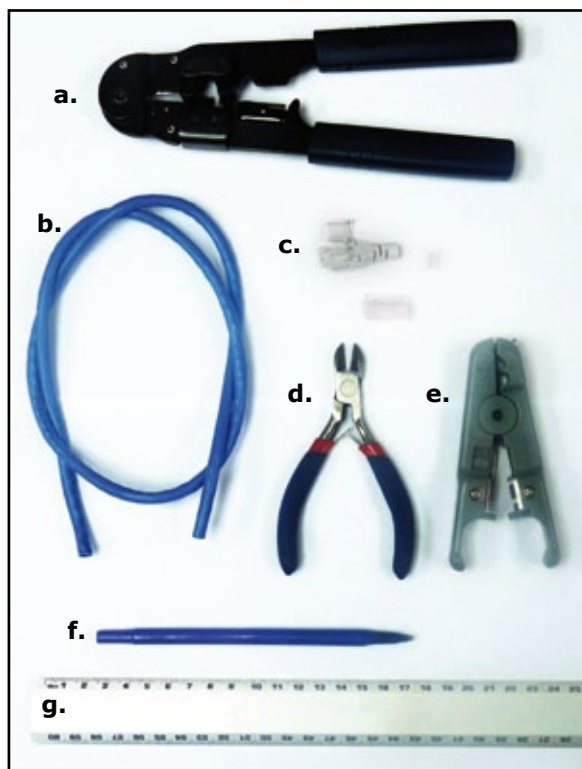


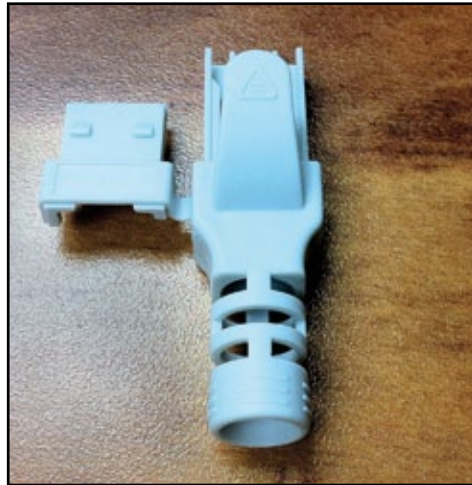
Figure 2

**3**

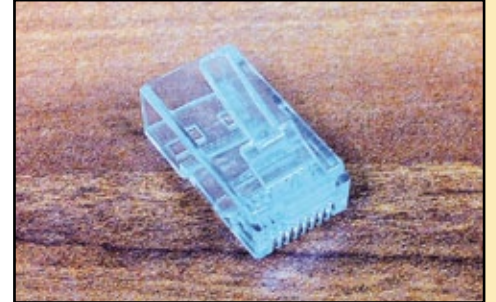
In the **Figures 3, 4 and 5**, we will identify the components of the connector. as shown



**Figure 3**  
**Organizer Insert**



**Figure 4**  
**Snagless Boot Body**



**Figure 4**  
**Main Body**

**4**

Strip 5 cm of the outer jacket of the cable as shown in the **Figures 6a, 6b, 6c and 6d**



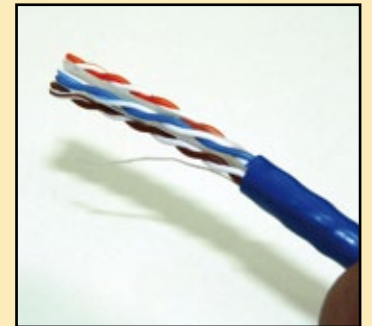
**Figure 6a**



**Figure 6b**



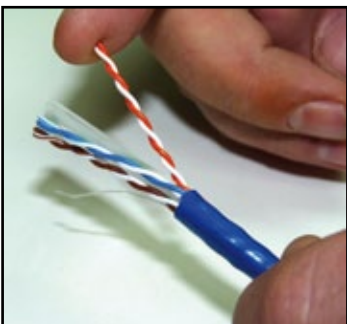
**Figure 6c**



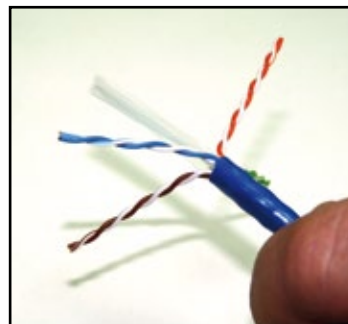
**Figure 6d**

**5**

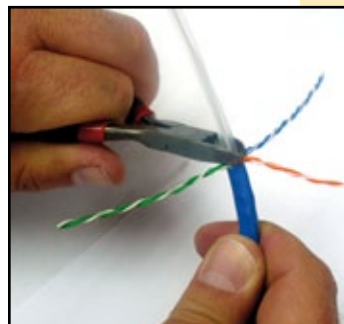
Please separate the copper pairs from the X core and cut it as shown in the **Figures 7a, 7b, 7c and 7d**



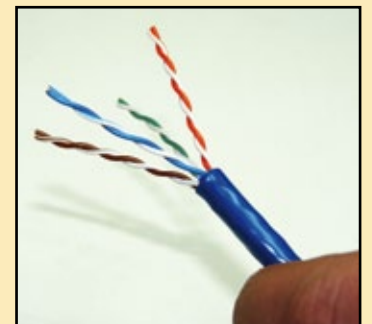
**Figure 7a**



**Figure 7b**



**Figure 7c**



**Figure 7d**

## 6

Align the conductors and insert them in the **Snagless Boot Body** as shown in **Figures 8** and **9**, please take in mind the norm to be used, and align the conductors as shown:

**Figure 10** for 568A Norm

**Figure 11** for 568B Norm

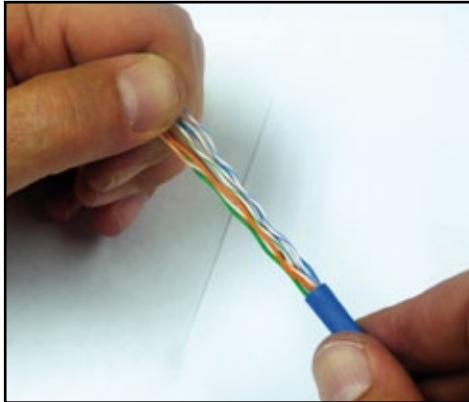


Figure 8

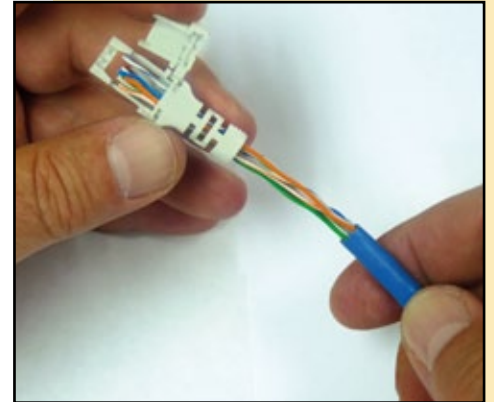


Figure 9

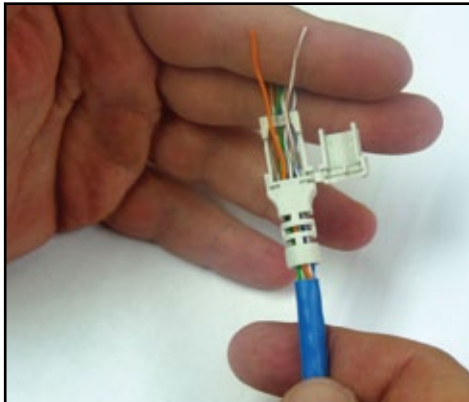


Figure 10

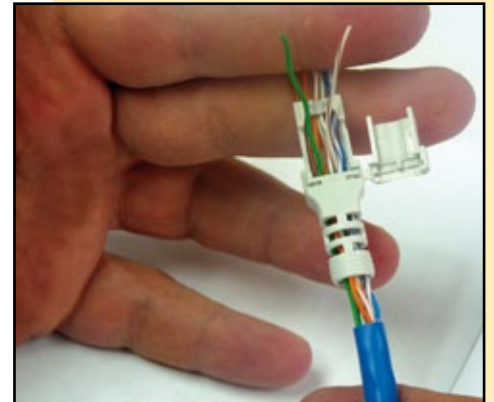


Figure 11

## 7

Continue opening and ordering the pairs as per the norm used, as shown in **Figure 12**. Example for the **568A Norm**.

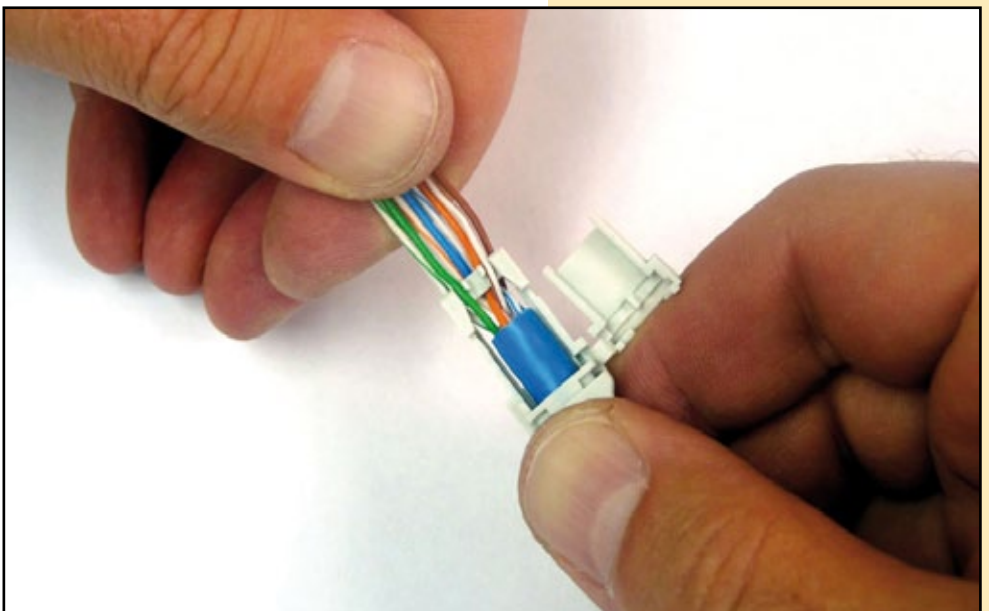


Figure 12

## 8

Once the conductors are properly ordered, you must cut the excess to 7 mm, this is in order that the tips are flush with the Main Body extreme, as shown in **Figure 13**.

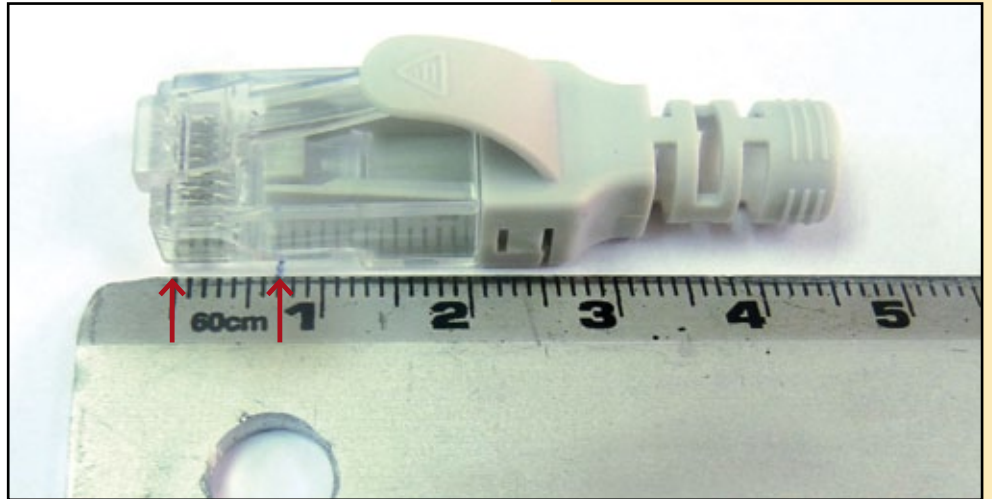


Figure 13

## 9

Proceed to position the **Snagless Boot Body** upside down to facilitate the cutting off the excess. Measure and cut the excess as shown in **Figures 14** and **15**.

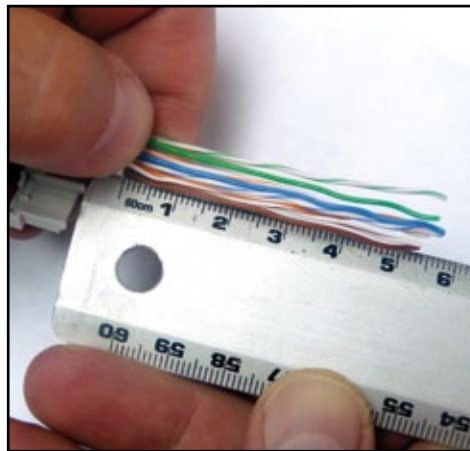


Figure 14

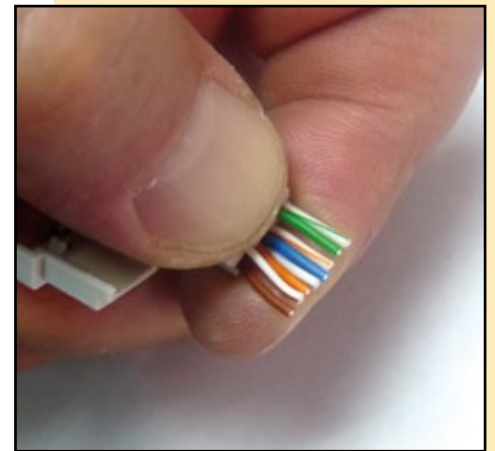


Figure 15

## 10

Proceed to engage the **Organizer Insert** and the conductors so the angled is upward and the conductors arrive to the end of it as shown in **Figures 16** and **17**.

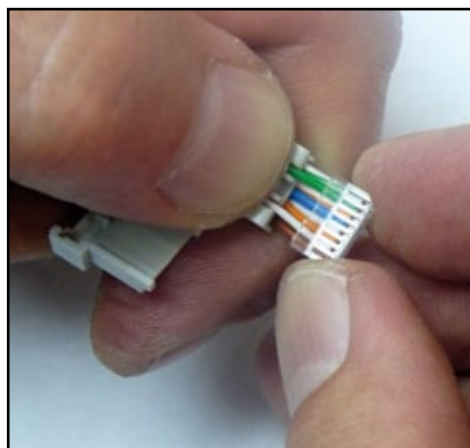


Figure 16

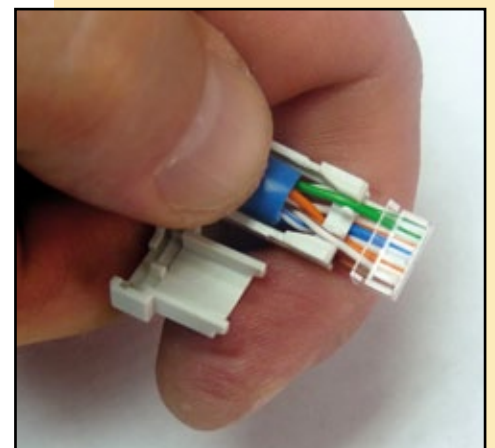
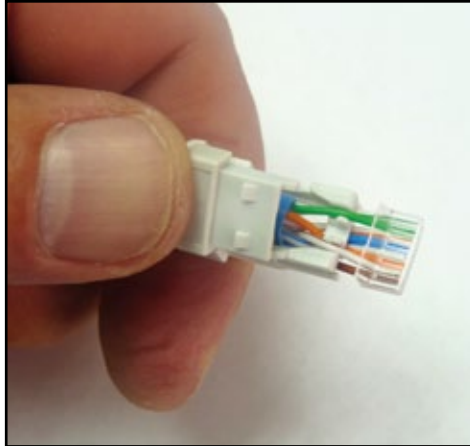
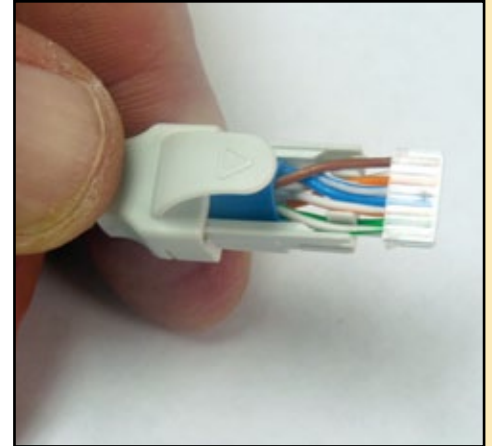


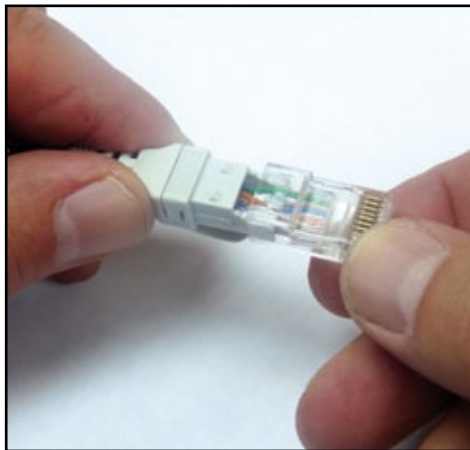
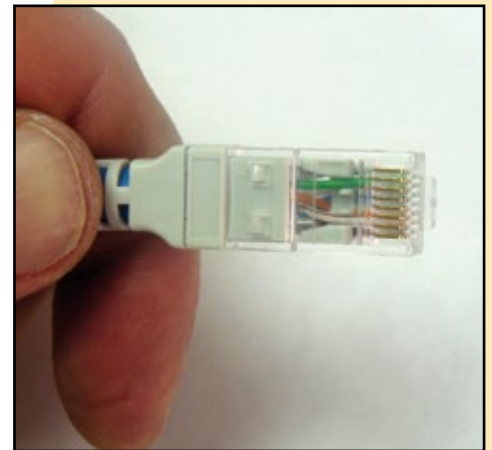
Figure 17

**11**

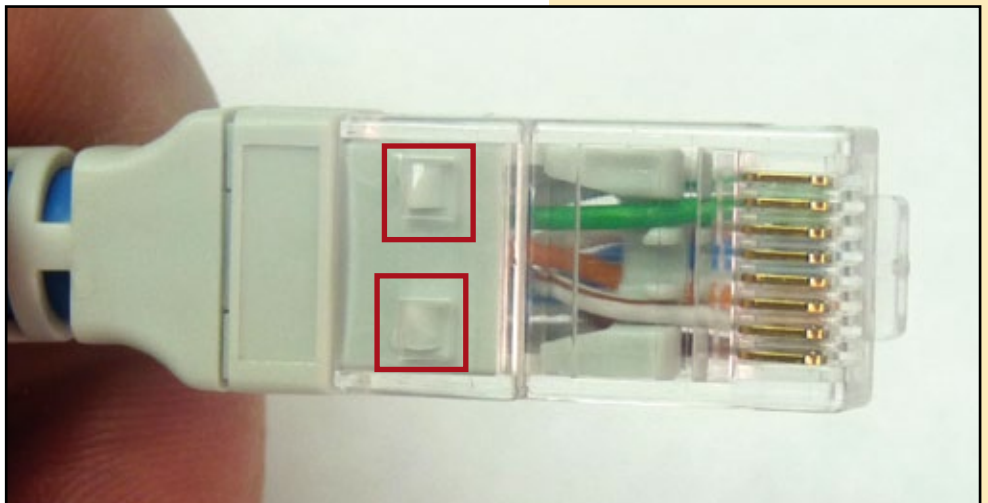
Proceed to close the **Snagless Boot Body** as shown in **Figure 18**, now, turn the Snagless Boot Body up again and verify that the norm is OK as shown in the **Figure 19**.

**Figure 18****Figure 19****12**

Now, please insert the assembled components into the **Main Body** as shown in **Figures 20** and **21**.

**Figure 20****Figure 21****13**

Please verify that the **Main Body** snaps in the **Snagless Boot Body** as shown in **Figure 22**.

**Figure 22**

## 14

Please verify that the conductors are flush with the end of their travel and proceed to crimp the conector as shown in **Figures 23** and **24**.

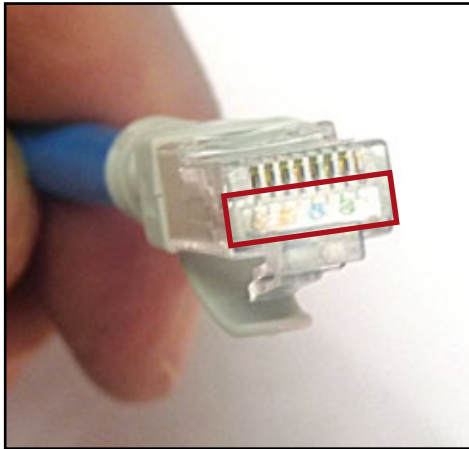


Figure 23

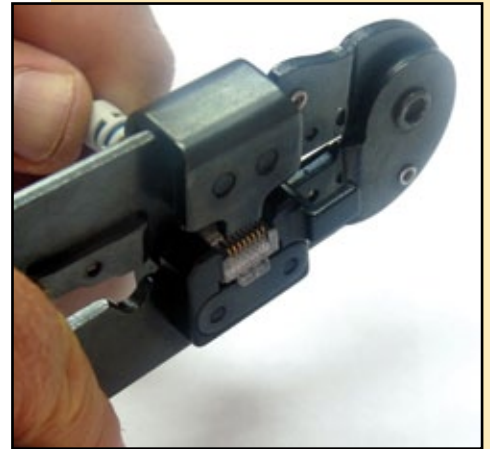


Figure 24

## 15

The connector already terminated can be seen in **Figure 25**.

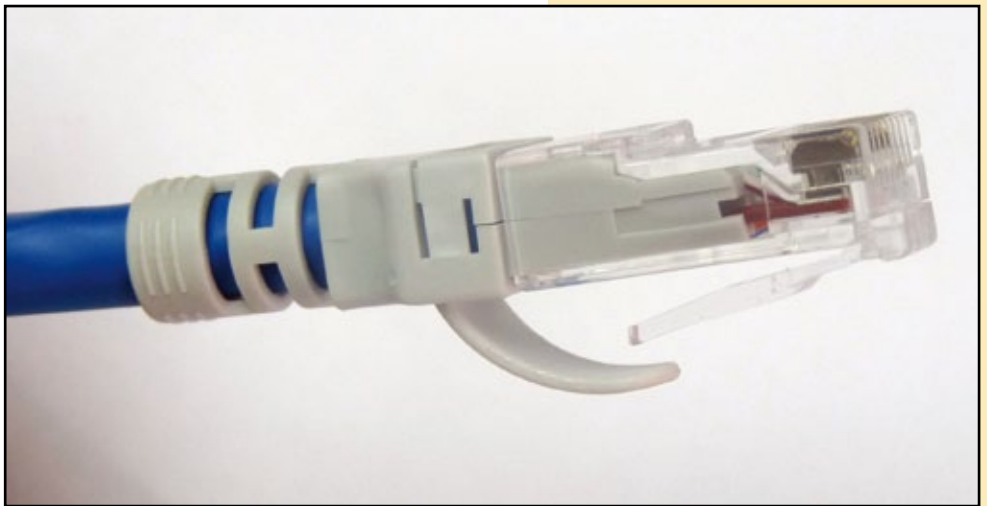


Figure 25