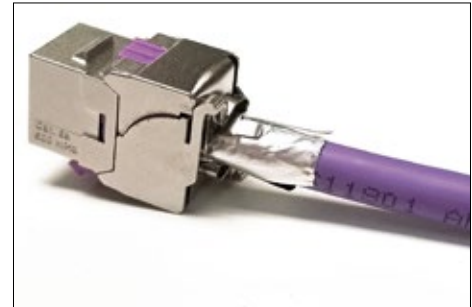
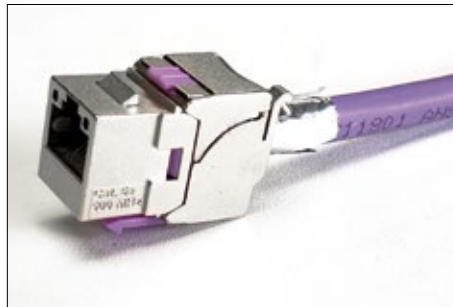


LP-SRCABFSNP Sirius Series, Modular Jack CAT 6A, Fully Shielded, 180°, Tool Less/Punch Down Style, Nickel plated body.

LPSRCABFSNP_SS_ENB01W

Features:

- Keystone Jack, CAT 6A, FTP, 180° IDC, for Communication applications in the work area.
- Fit for CAT 6A shielded general cable distribution system, backward compatible with Shielded CAT 6, CAT 5e and CAT 3 systems Keystone Jack, CAT 6A, 180° punching direction, for connecting applications of communication ports in working area.
- Compliant with ISO/IEC 11801. 2002 CLASS & ANSI/TIA 568-C.2 CAT 6A T568-A and T568-B punching sequences are both compatible.
- Shielded, rugged.
- FTP capable.
- Grounding Contact: Bronze and Nickel Plating.
- Our standard style allows compatibility with many other brands and systems.
- Compact and practical design.
- High performance copper alloy contacts with 50 micro inches of gold plating.
- 750 mating cycles minimum for RJ45 as per ISO (IEC 1801, IEC 6063-7-5).
- 200 mating cycles minimum for IDC.
- Suitable for 22-24 AWG solid and stranded cable.



LP-SRCABFSNP Sirius Series, Modular Jack CAT 6A, Fully Shielded, 180°, Tool Less/Punch Down Style, Nickel plated body.

The CAT 6A RJ45 Jack, Sirius Series, 180° IDC, Robotic Manufactured Keystone® Compatible Fully Shielded in Bronze with Nickel Plated body are also compatible with our iMC® line of patch panels and faceplates.

LanPro has designed them specifically for high speed and bandwidth in excess of 500 MHz.

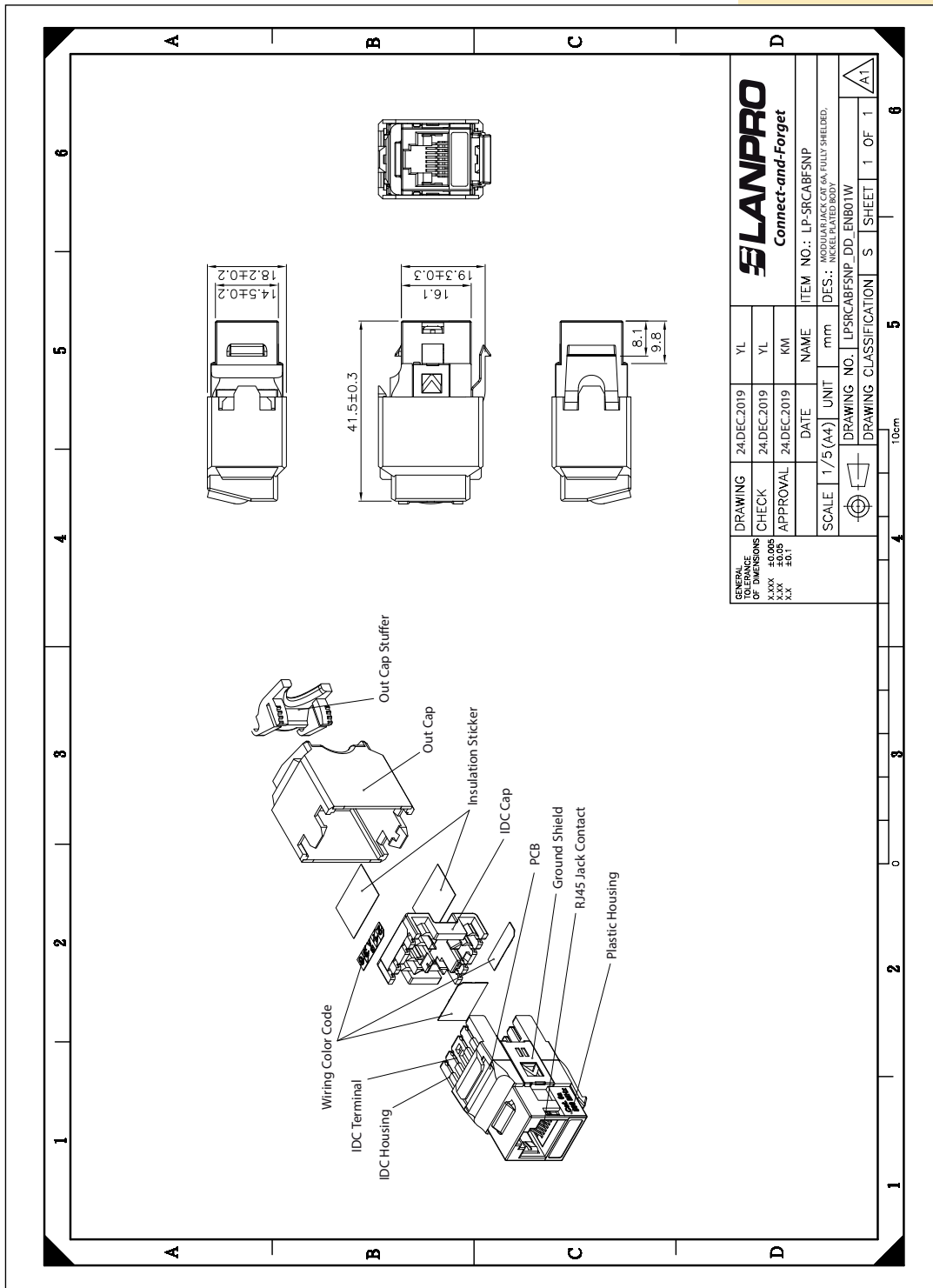
Our modular CAT 6A Sirius Series Jacks are designed to match our CAT 6A compatible products in a perfect way. Their performance is in compliance with the ANSI/TIA 568 C.2 standard. All CAT 6A devices are very adaptable to customer changing requirements.

Our modular CAT 6A Sirius Series compatible Jacks allow for universal termination, either T568-A or T568-B.

A Specifications

Material	
Plastic Housing	Zinc Die-Casting
Jack Bracket Set	Polycarbonate, UL 94-HB, Transparent color
RJ45 Jack Contact material & finished	Phosphor Bronze with 50-60 micro inches Nickel plated
	Contact area: Min. 3mm 50 micro inches Gold plated
Ground Shield	Bronze with Nickel plated
PCB	Black color
IDC Housing	PC, UL 94V-0
IDC Terminal material & finished	Phosphor Bronze with 50-60 micro inches tin plated
	Suitable for 22-24 AWG stranded and solid wire, 1.27mm insulation OD
Wiring color code	Art paper
IDC CAP	PC, UL 94V-0, Verde Transparente, Pantone 375C
Insulation sticker	PET
Out Cap	Zinc Die-casting
Out Cap Stuffer	ABS, UL 94V-0, with nickel plated
Performance	
Wiring color code	T568A & T568B
Insertion Force	900gms for 8 contacts
Retention Strength	7.7 kgs between jack and plug
Operation Temperature	-10°C to 60°C
Durability	Jack: 750 cycles plug-jack mating and unmating test, insertion cycles at 20 cycles/minute max, Contact resistance test per 100 cycles
	IDC: Max. 200 punching times
The CAT 6A transmission performance is in compliance with the ANSI/TIA 568C.2 standard	

B Dimensional Drawing



C How to order

LP-SRCABFSNP Sirius Series, Modular Jack CAT 6A, Fully Shielded, 180°, Tool Less/Punch Down Style, Nickel plated body.

LanPro is continuously improving its products and reserves the right to change specifications and availability without prior notice.