

123 Manual, LP-RJ458P8CC6US11 RJ45 8P8C One Part CAT 6 Unshielded Plug with Gold-Plated Contacts with Three Slanted Prongs for AWG 23-26 Solid Wire Conductors. Assembling Plug

LPRJ458P8CC6US11_M123_ENB01W



123 Manual, LP-RJ458P8CC6US11 RJ45 8P8C One Part CAT 6 Unshielded Plug with Gold-Plated Contacts with Three Slanted Prongs for AWG 23-26 Solid Wire Conductors. Assembling Plug

This 123 Manual will guide you step by step in the process of assembling CAT 6 one part plug **LP-RJ458P8CC6US11** by **LanPro**.

1

First make sure that you have all the necessary tools to assemble the **LP-RJ458P8CC6US11** plug, as shown in **Figure 1**:



- LP-RJ458P8CC6US11 Plug
- LP-C6010GRB Cable
- LPT-S501A Universal Cable Stripping Tool
- Cable cutter
- LPT-2008R Ratchet Crimp/Cut Tool

Figure 1

2

Next, using a suitable cable stripping tool, peel the network cable approximately 3 cm (1.18 inches) as follows, **Figure 2**.



Figure 2

3

Carefully remove the remaining jacket, and proceed to verify the extent of the stripped portion of the network cables is 3 cm (1.18 inches) as shown in **Figure 3**.

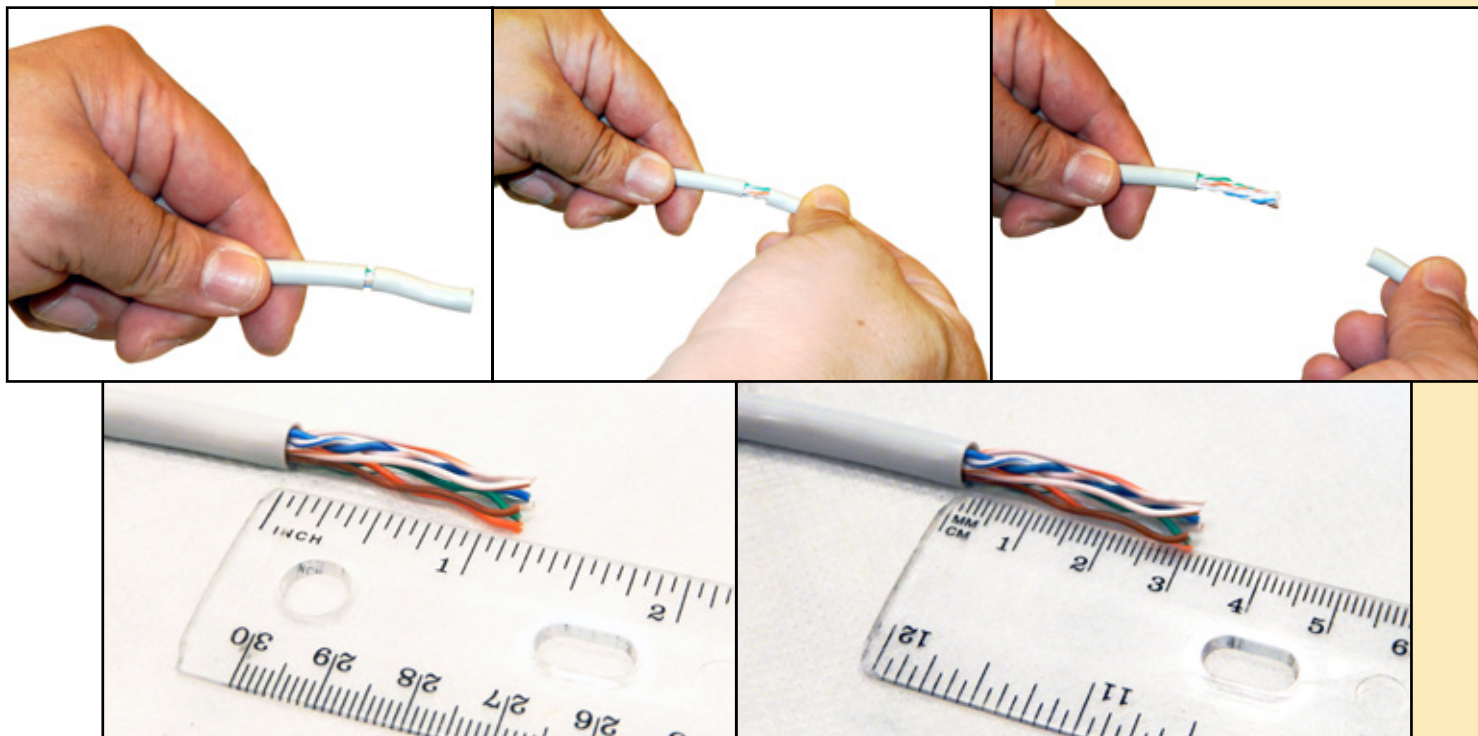
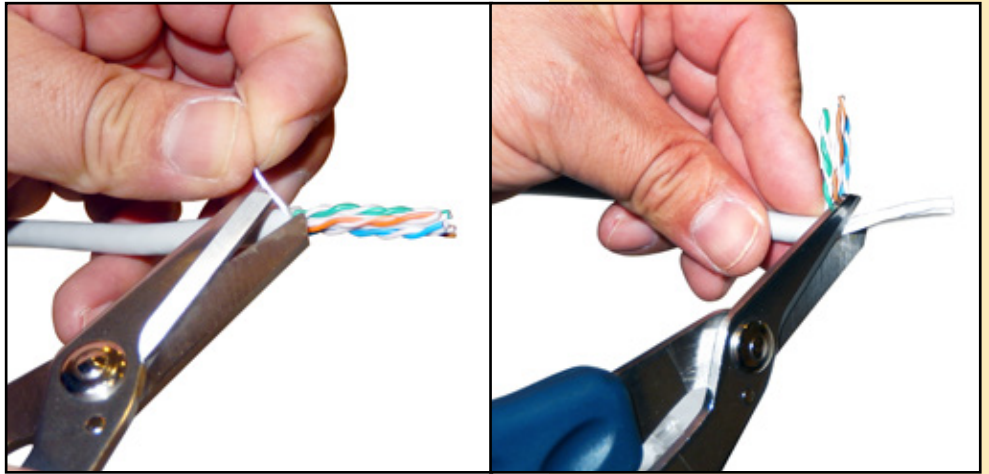


Figure 3

4

Once you have removed the leftover jacket, proceed to cut the Ripcord and the Flexible-X™ separator core, as you can see in **Figure 4**.

Figure 4



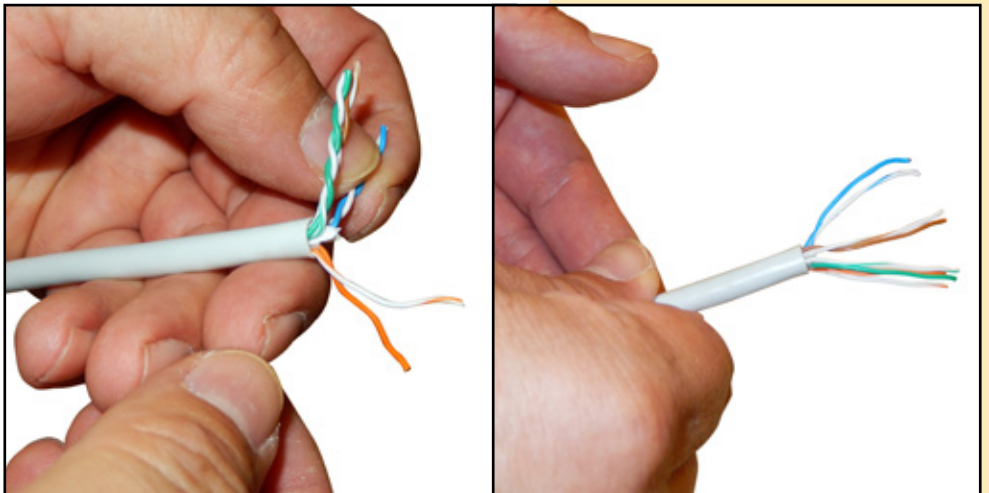
Cut the Ripcord

Cut the Flexible-X™ separator core

5

Separate each pair of the network cable as shown, **Figure 5**.

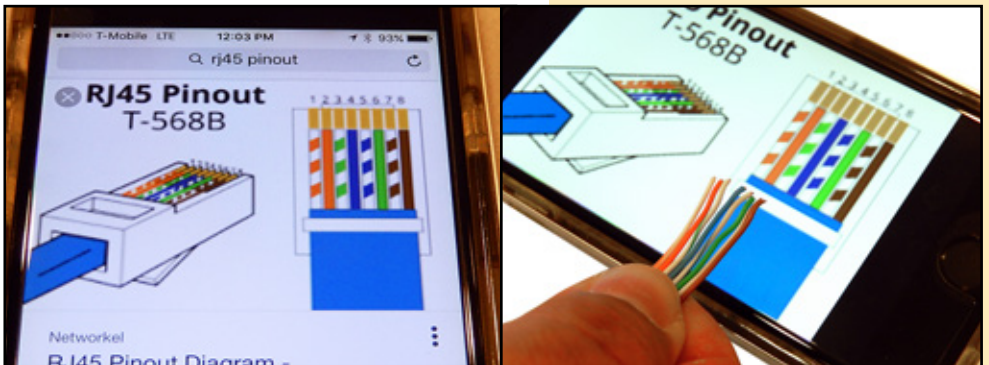
Figure 5



6

You must have the color coding to be used according to the selected standard, for this example we will use the color coding under T-568B standard as shown in **Figure 6**.

Figure 6



7

Next, adjust the measurement of the wires to the measurement of the plug, approximately 2 cm (0.78 inches) as shown in **Figure 7**

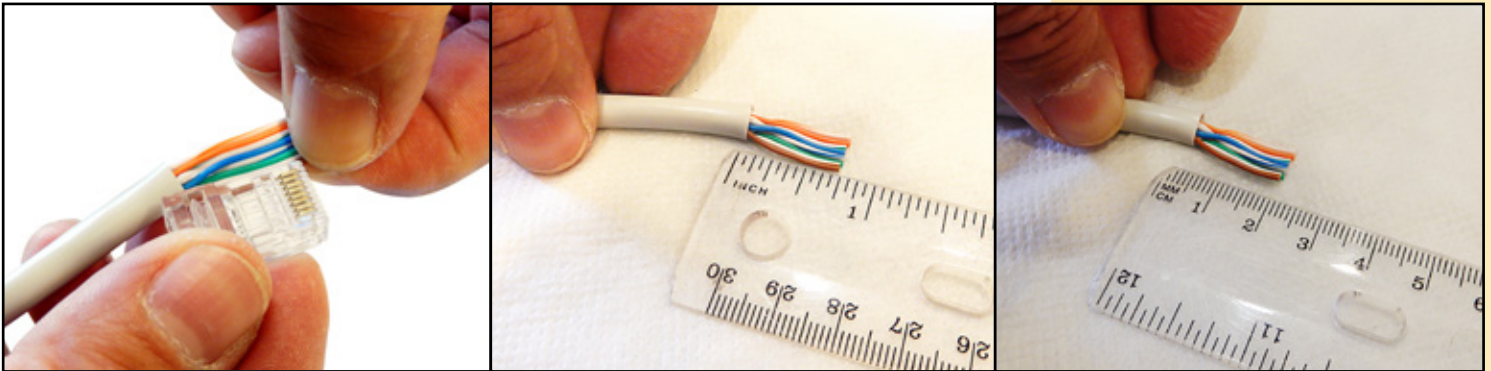


Figure 7

8

Proceed to insert the wires of the network cable into the plug, being careful with the selected color coding. **Figure 8.**

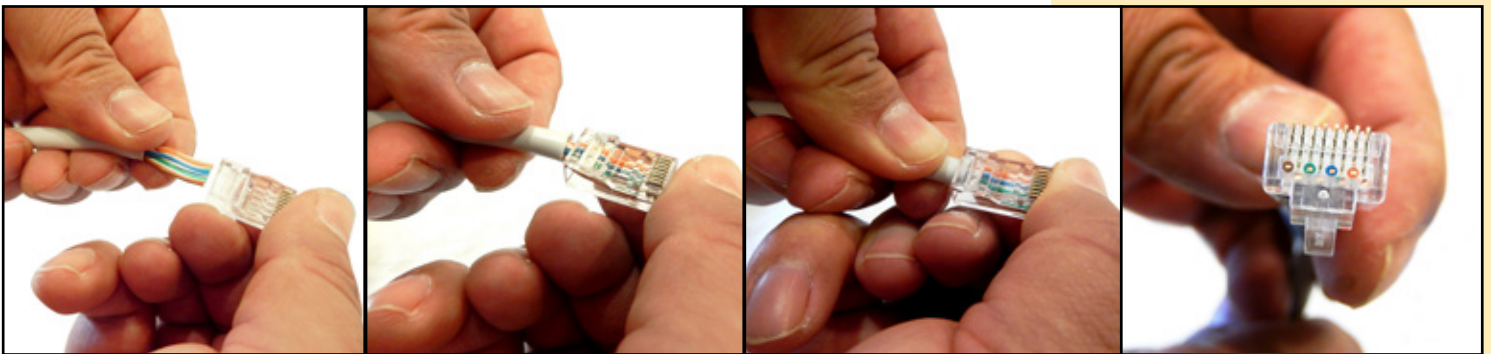


Figure 8

9

Verify that the selected encoding is correct as shown in the following **Figure 9.**

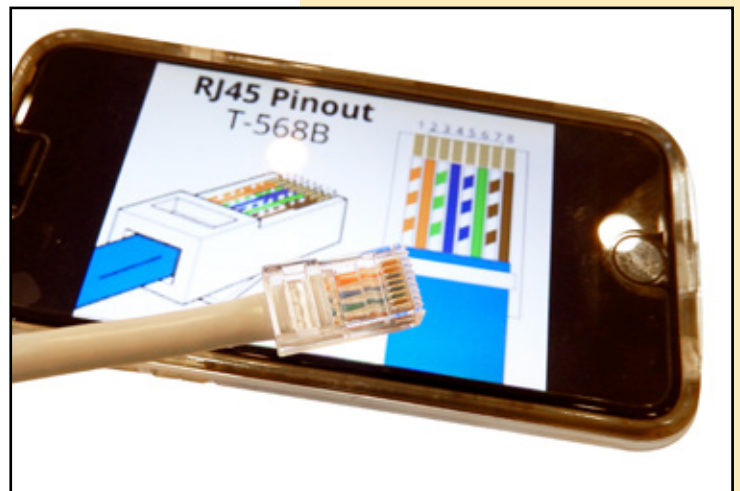


Figure 9

10

To finish with the modular precision punching tool, proceed to punch the cable as shown in **Figure 10**



Figure 10

