

**LP-RJ094P2CTLUS Telephony/Electronics use Gold Plated Modular Plug, One Pair.**

LPRJ094P2CTLUS\_SS\_ENB01W

**Features**

- Compatible with stranded copper wire.
- 4P2C head style (4 positions, 2 contacts).
- Extremely high quality module plugs.
- Telephony or electronic applications to convey one signal pair between electronic apparatus or devices. Patch cord cables can be made using this plug.
- Electroplated gold contact surface. 50 micro-inches of gold over 50 micro- inches of nickel for better data transmission and higher signal strength.
- Plugs for stranded copper wire cable.
- Telephony Modular Plug.
- The plugs are used in telephony or voice applications, or electronic signals at home or office cabling systems.



## **LP-RJ094P2CTLUS Telephony/Electronics use Gold Plated Modular Plug, One Pair.**

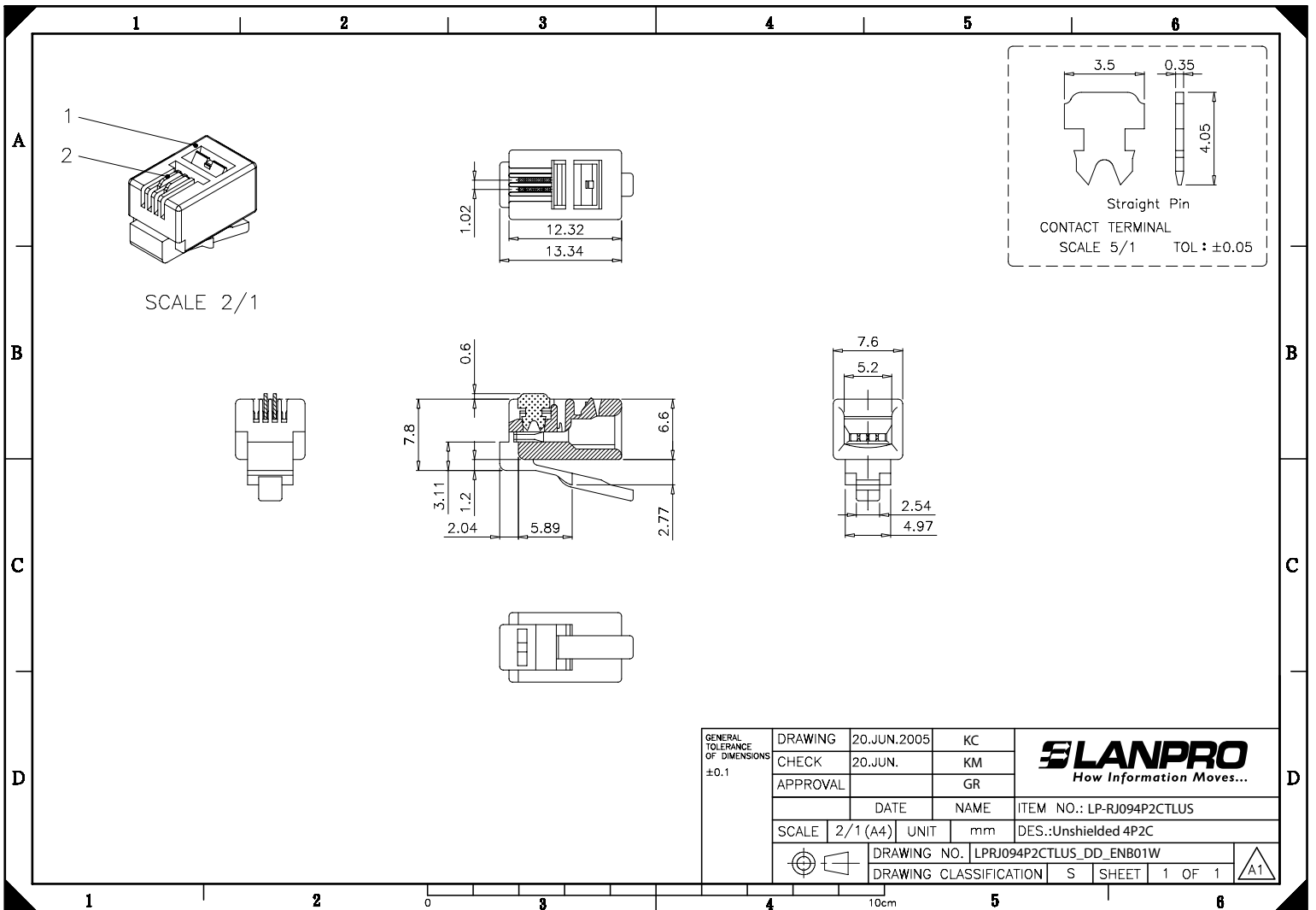
This LanPro plug is mainly used for telephony or electronic applications to convey one signal pair between electronic apparatus or devices. Patch cord cables can be made using this plug.

These plugs allow field preparation using flexible stranded AWG26 to AWG22 wires. The electroplated contact surface of 50 micro-inches assures long life and a high degree of resistance against corrosion and environmental hazards.

**A Specifications**

<p>■ <b>1.-Material</b></p>	<p>1.-Housing: Polycarbonate, UL 94V-2, Transparent color. 2.-Contact terminal: Phosphor bronze.</p>
<p>■ <b>2.-Finish</b></p>	<p>1.-50 micro-inches of electroplated gold over 50 micro-inch nickel plated on contact area.</p>
<p>■ <b>3.-Performance</b></p>	<p>1.-Operating temperature: -40°C to 80°C. 2.-Cable plug tensile strength: 7.7 Kg. 3.-Used for 24-26 AWG stranded wires.</p>

**B Dimensional Drawing**



**C How to Order**

**LP-RJ094P2CTLUS Telephony / Electronics use Gold Plated Modular Plug, One Pair.**