

Patch Cord Cat 6.

LPPATCHCORDCAT6_SS_ENB01W

Features

- ETL verified.
- UL and CSA approved.
- Cat6 cords are backward compatible with 5e, 5 and lower category modules.
- Made of highly flexible, stranded data cable.
- Factory molded strain-relief boots for a long life and great appearance. Manipulations and pulling of these cables are not longer a matter of concern for the installer.
- Fully, 100% factory tested.
- 568A/B Compatible. Nominal Voltage: 45V. Max. allowable: 75V.
- Seven vivid colors to choose from.
- 0.5m, 1m, 2m, 3m, 4m, 6m and 20m lengths currently available. (Approx: 1.5, 3, 6, 10, 13, 20 and 65')
- Custom lengths available upon request. (Minimum quantities apply).
- AWG 24 (U/UTP), 26 (S/FTP).
- Hot molded high Density Design.



High Density Patch Cord Cat 6.

Reliable 6 patch cords are the key to a new generation of high speed/performance cabling systems.

LanPro cords are made of top quality flexible cable, which translates into soft bends and easy handling.

Seven Bright solid colors that don't cause confusion, UV additives avoid color fading along the years. Crystal Clear plugs for improved visibility.

Our factory, hot-molded strain-relief provides very high mechanical strength assuring long life and many years of use and abuse.

All LanPro cords are 100% factory tested using top-of-the line test equipment. Don't compromise the performance of your installation with home made cords or cheap imitations. LanPro patch cords are not only very good, but also very affordable. Our units are guaranteed to perform in compliance with ISO/IEC 11801 standards, EIA/TIA 568A/B, EN50173 and UL, CSA, ETL and 3P are verified.

Factory terminated and tested cords are required to achieve consistent category 5e or 6 channel performance. Field termination is not recommended.

A Technical Specifications**Material:****1.-Material RJ45 Plug:**

- 1.1.-Housing: Polycarbonate, UL 94V-2, Transparent color.
- 1.2.-Contact Material: Phosphor Bronze with 50-60 micro-inch Nickel Plated.
- 1.3.-Contact finish: Minimum 50 micro-inch Gold Plated on surface contact area.
- 1.4.-Shield: X=0 None.
X=1 Bronze with Nickel Plating.

2.-Cable

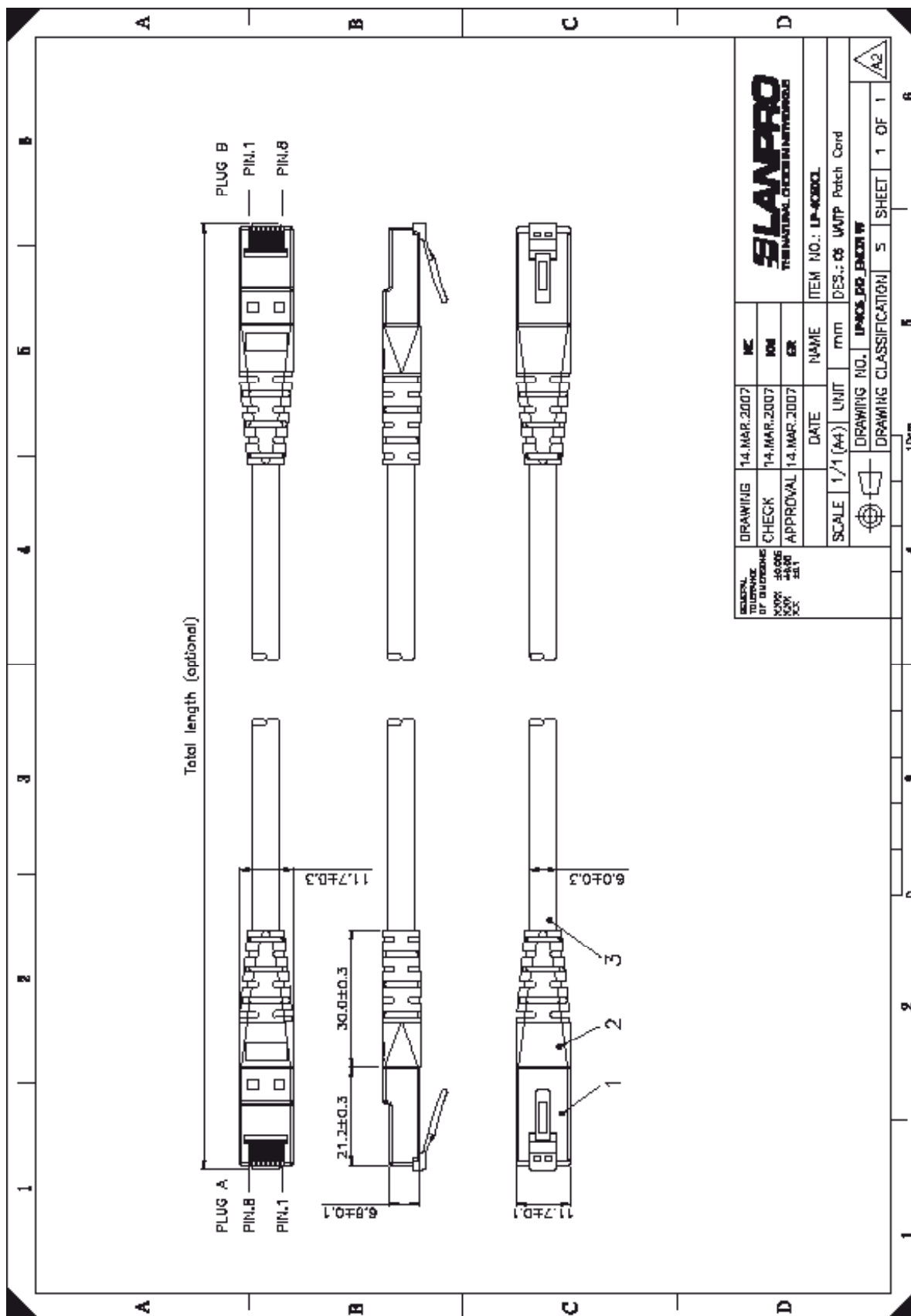
- 3.1.-Jacket: PVC.
- 3.2.-Conductor: X=0 : 24 AWG stranded copper.
X=1 : 26 AWG stranded copper.
- 3.2.-Conductor: PE
- 3.4.-Shield: X=0 : None
X=1 : Aluminum Foil Shielding for Each Pair,
Tin Copper Braid overall.

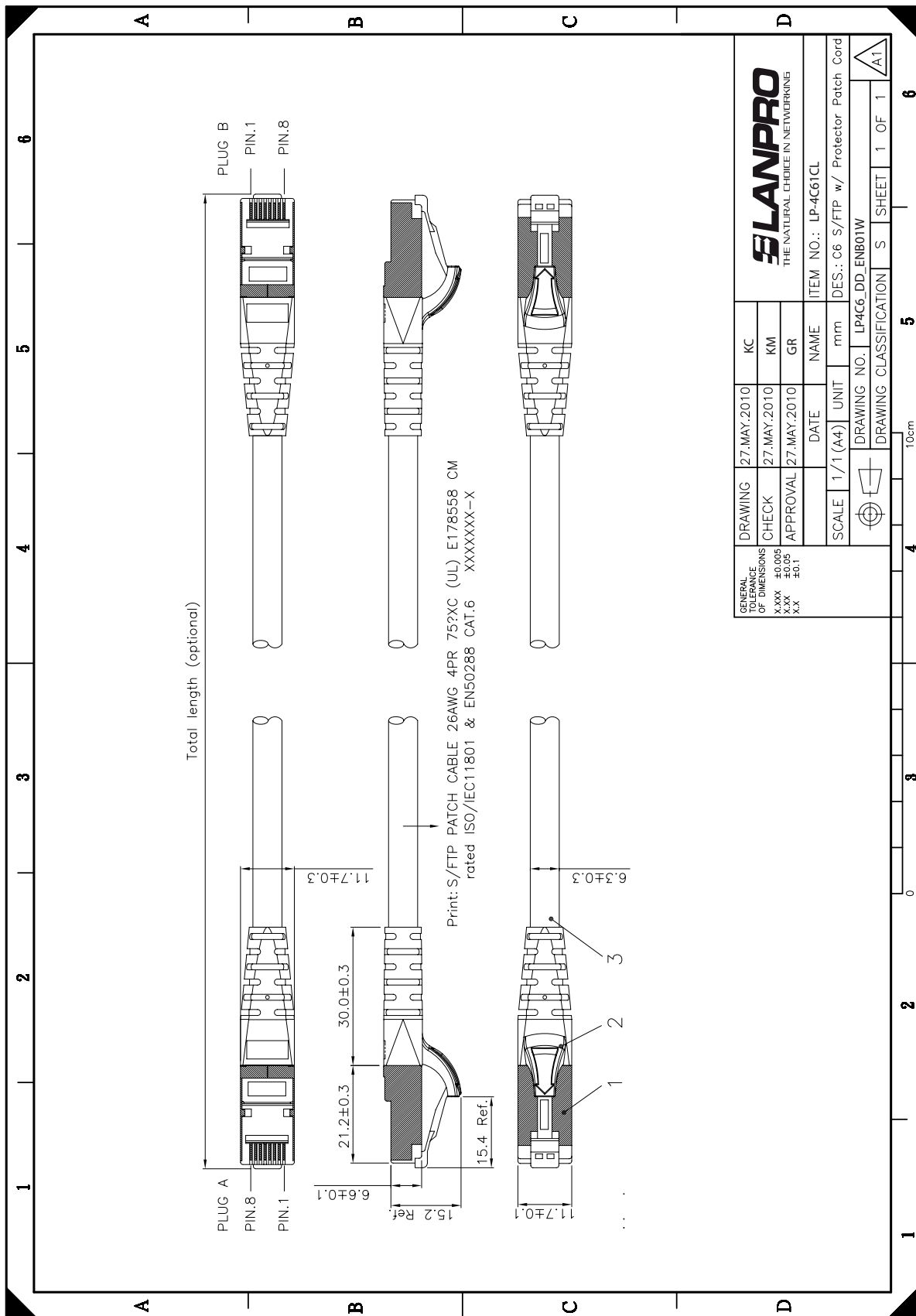
- 4.-Cable Structure: X=0 : U/UTP
X=1 : S/FTP, 4 twisted pairs

- 5.-Wiring: T568A & T568B

Note: The micro-inch (μ in) is a common imperial unit of distance equal to one millionth of an inch, or 25.4 nanometers (nm) or 1μ in = 0.0254 μ m.

B Dimensional Drawings





C How to Order

■ LP-4C6XCL

4C6

4C6= 4 Pairs Cat6

X: Shield Type

0: Unshielded
1: Fully Shielded

C: Color

WH: White
GN: Green
YL: Yellow
BL: Blue
RD: Red
BK: Black
GR: Gray

L: Lenght

05=0.5m
1=1m
2=2m
3=3m
4=4m
6=6m
20=20m