

# 123 Manual, How to terminate an LP-P8C6XX45USD CAT 6 Patch Panel

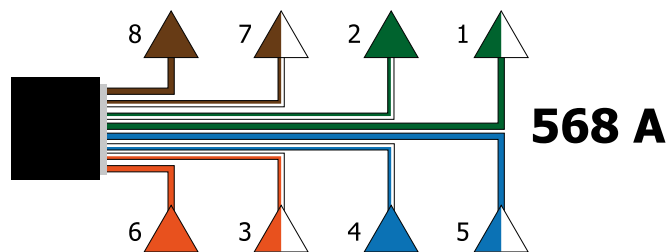
LPP8C6XX45USD\_M123\_ENB01W

## 1

You must chose the termination standard to be used. **Figure 1**

**A**

- |                 |                |
|-----------------|----------------|
| 1- White-Green  | 5- White-Blue  |
| 2- Green        | 6- Orange      |
| 3- White-Orange | 7- White-Brown |
| 4- Blue         | 8- Brown       |

**568 A****B**

- |                 |                |
|-----------------|----------------|
| 1- White-Orange | 5- White-Blue  |
| 2- Orange       | 6- Green       |
| 3- White-Green  | 7- White-Brown |
| 4- Blue         | 8- Brown       |

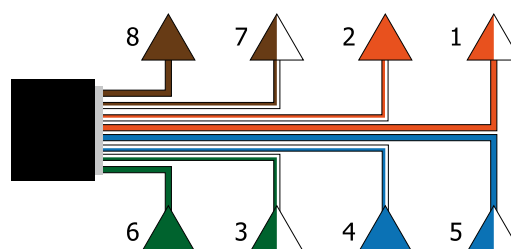
**568 B**

Figure 1

## 2

**Figure 2 shows the tools needed:**

- Cutter tool
- LanPro LP-P8C6XX45USD Patch Panel CAT 6 8000 Series, in this example XX=24
- Punch Down Tool for terminating structured data and telephone cables in Kröne or 110/88 type terminal blocks. (LPT-314BK)
- Universal Cable Stripping Tool. (LPT-S501A)
- F/UTP CAT 6 LanPro Cable model LP-C6300BLB
- Low cost RJ45 medium-duty Crimp/Cut Tool. (LPT-210C)
- Pen
- Length measuring tool

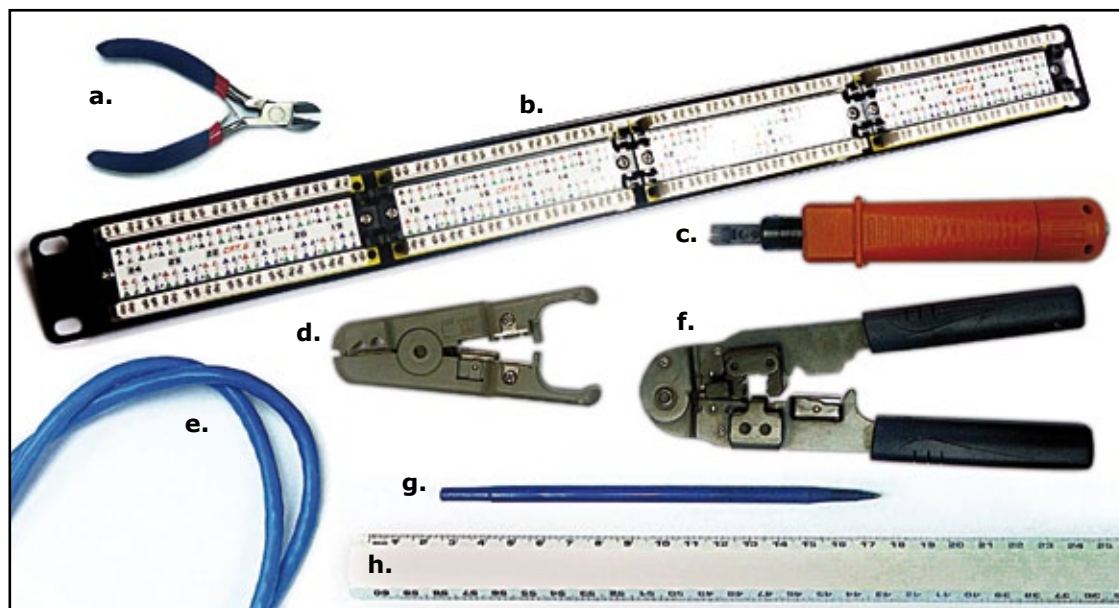


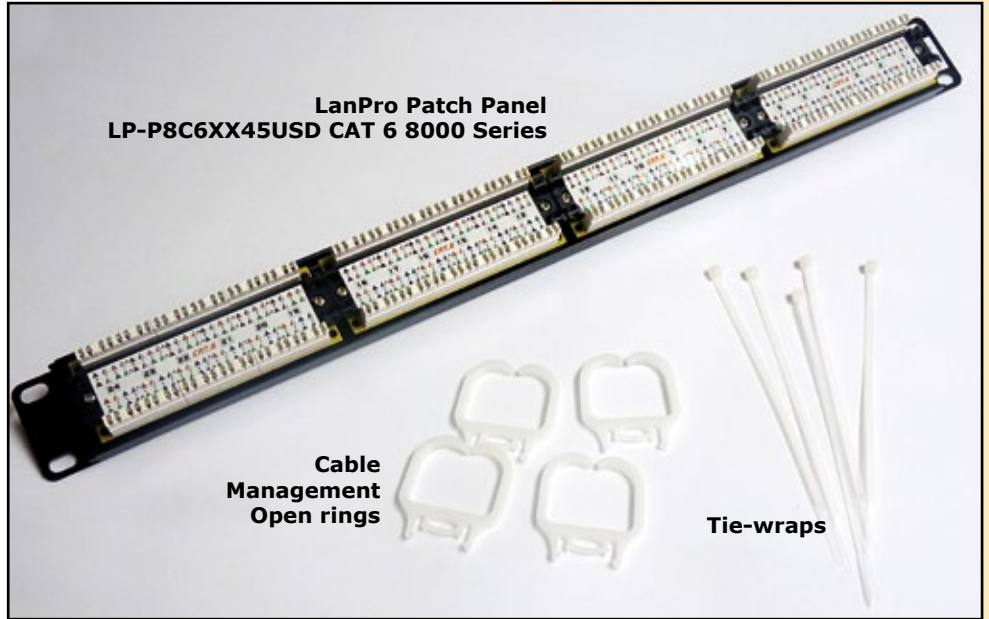
Figure 2



**3**

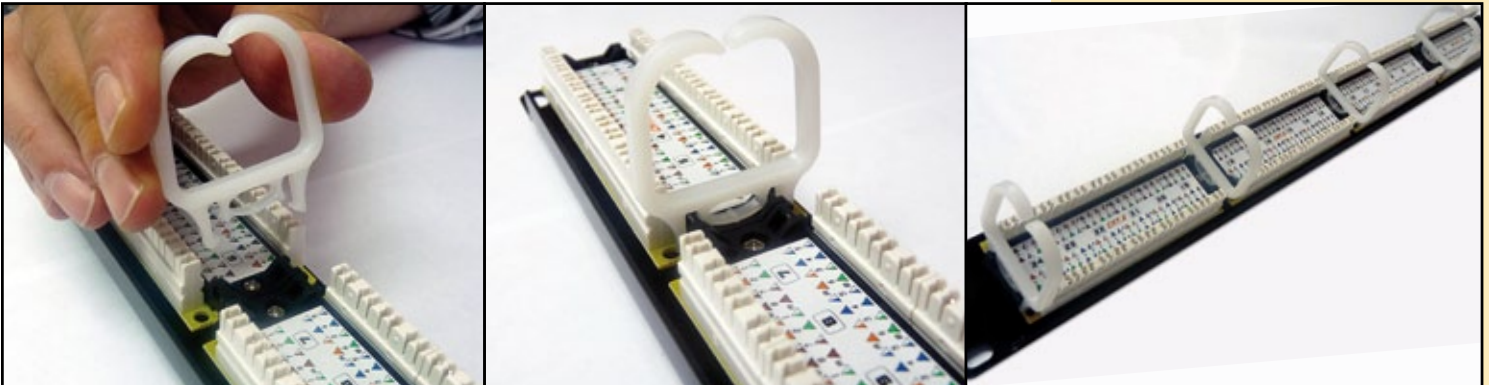
3. In **Figure 3** the three (3) parts that compose this Patch Panel are shown.

**Figure 3**



**4**

Attach the cable management rings to the Patch Panel as shown in the images of **Figure 4**



**Figure 4**

**5**

Proceed to strip 30 mm of the jacket as shown in the group of images of **Figure 5**



**Figure 5**

## 6

Please spread the pair to have Access to cut the plastic separator as shown in the images of **Figure 6**

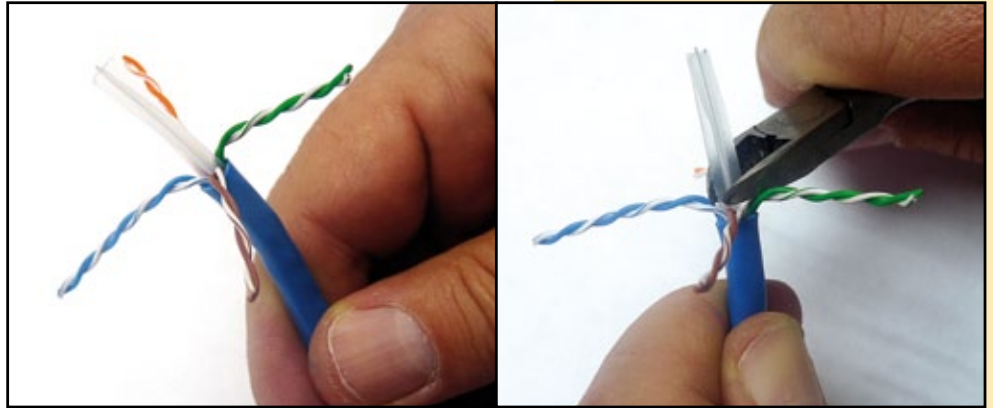


Figure 6

## 7

Proceed to separate and insert each conductor in the corresponding place as per the used standard, **in this case is B (568B)**, as shown in the images of **Figure 7**

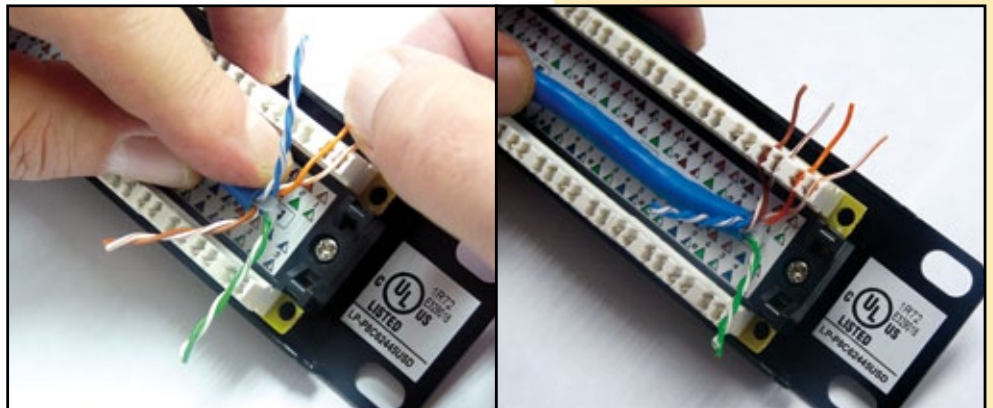


Figure 7

## 8

Proceed to punch each copper conductor in its place with the punching tool, as shown in **Figure 7**

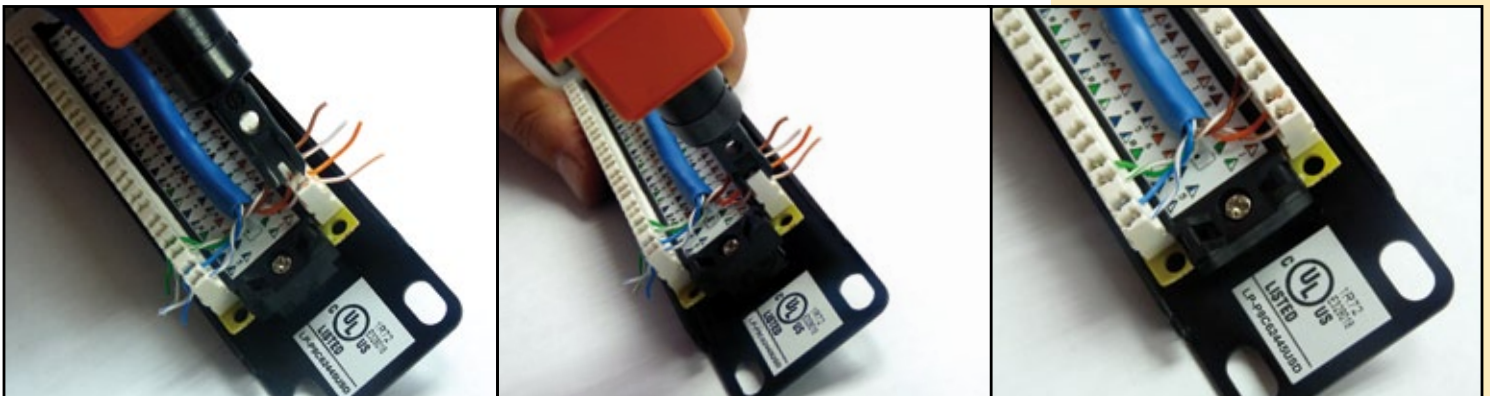


Figure 8

## 9

Proceed with each position until the designated Patch Panel ports are terminated as shown in the images of **Figure 9**

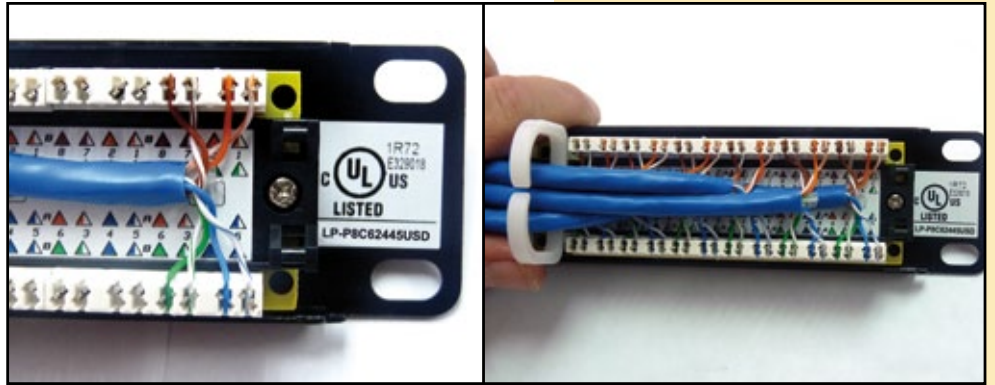


Figure 9

## 10

Proceed to slide the Tie-wrap in place and tighten, then cut the excess, as shown in the images of **Figure 10**.

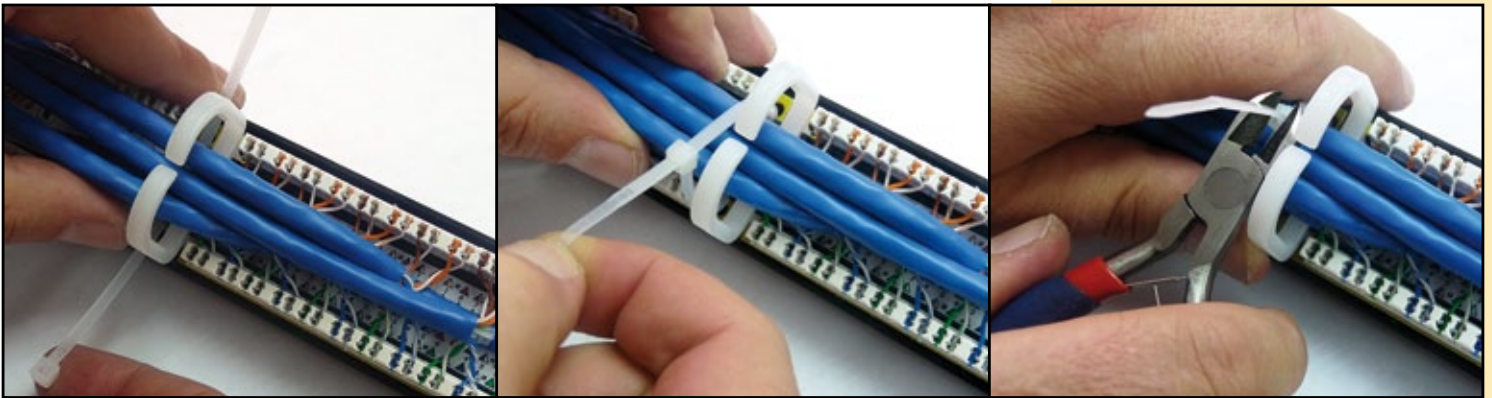


Figure 10