

## LP-P8C64845USD

**8000 series Unshielded CAT 6 Patch Panel with 48 ports and 45 degrees of entry angle.**

LPP8C64845USD\_SS\_ENB01W

### Features

- ETL verified to TIA/EIA 568-C.2 CAT 6.
- Handles larger CAT 6 conductors.
- Center tuned to LanPro patch cords.
- UL and CSA USA and CANADA approved.
- Superior performance to traditional designs, improved 45 degree entry angle that avoids dust and dirt particles.
- Better bending radius for less stress to patch cords.
- 568-A and 568-B compatible.
- Universal 110 wiring termination.
- Rugged Construction.
- Cable Management clips at the rear of the unit.
- Backwards compatible with CAT 5e systems.
- Black durable and elegant finish.
- High performance Copper alloy contacts, 50 micro-inches of gold plating.
- Life of 200 Punch cycles.
- 750 cycles of jack insertion (worst case).
- Outstanding price/performance ratio.
- Fully compatible with 19" rack mount standards.
- High Density and low profile design supports good cabling practice.
- Lanpro World Wide Warranty.
- Labeling provision as per EIA/TIA 606-A.
- Unshielded type.



### LP-P8C64845USD 8000 series Unshielded CAT 6 Patch Panel with 48 ports and 45 degrees of entry angle.

The LanPro 8000 series CAT 6 48 port patch panels with entrance angle of 45 degrees are used on high speed LAN Gigabit transmission systems, with a proven bandwidth in excess of 250 Mhz.

These units are developed with proprietary printed circuit board (PCB) and improved component geometries, resulting in a better performance, surpassing the TIA/EIA specifications

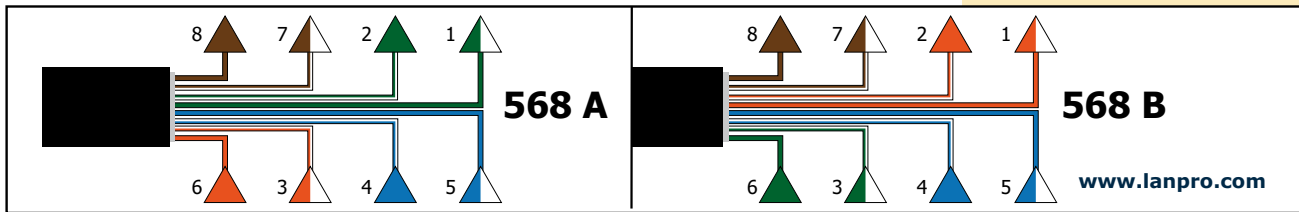
This new design IDC connector allows the use of both, Kröne and 110D punching tools, and has colored 568-A and 568-B labels to facilitate wiring.

The 45 degree angle entry is a very desirable feature, because there is less stress for both, the jack panel and the connecting cords. The bend radius is improved and this feature naturally protects the connection point from being disturbed or damaged.

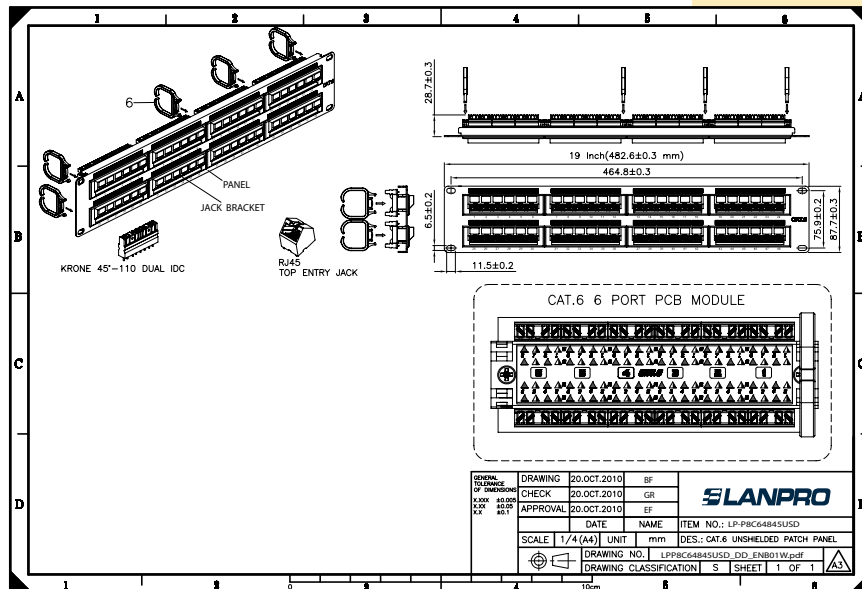
**A Specifications**

| Materials                  |   |  |
|----------------------------|---|--|
| Panel                      | SPCC, 1.5 mm thickness painted black color (RAL 9005)   |  |
| Jack RJ45                  | Housing   | PBT+glass fiber, UL 94V-0  |
|                            | Contact Bracket   | PBT+glass fiber, UL 94V-0.   |
| RJ45 Jack Contact          | Material  | Phosphor bronze with nickel plating  |
|                            | Finish  | 50 microinch gold plated on plug contact area  |
| IDC                        | Housing   | PC+glass fiber, UL94V-2.   |
|                            | Terminal  | Phosphor bronze with tin plating.  |
| Jack Bracket Set           | ABS UL 94V-0  |  |
| Cable Holder               | Nylon   |  |
| ID labels                  | As per EIA/TIA 606-A  |  |
| PCB                        | FR4, UL94V-0  |  |
| Performance                |   |  |
| Wiring                     | T568A & T568B   |  |
| Insertion Force            | 20 N max. (IEC 60603-7-4)   |  |
| Retention Strength         | 7.7 Kg between jack and plug  |  |
| Operating Temperature      | -10°C to 60°C. (ISO 11801, ANSI/TIA/EIA 568 B.2)  |  |
| Life (mating cycles)       | Jack  | 750 cycles min. (ISO/IEC 11801, IEC 60603-7-4)   |
|                            | IDC   | 200 cycles min. Suitable for 22-26 AWG stranded and solid wire, compatible with both 110 & Krone punch down tools. |
| Transmission Performance   | The CAT 6 transmission performance is in compliance with the ANSI/TIA/EIA 568 B.2-1 standard. |  |
| Frequency                  | 250 MHz   |  |
| UL listing                 | E329018   |  |
| Electrical Characteristics |   |  |
| Isolation resistance       | 500 MOhm  |  |
| Contact resistance         | 20 mOhm   |  |
| DC resistance              | 0.1 Ohm   |  |

**B How to terminate example**



**C Dimensional diagrams**



**D How to Order**

**LP- P8C64845USD** 8000 series Unshielded CAT 6 Patch Panel with 48 ports and 45 degrees of entry angle.

LanPro is continuously improving its products and reserves the right to change specifications and availability without prior notice.